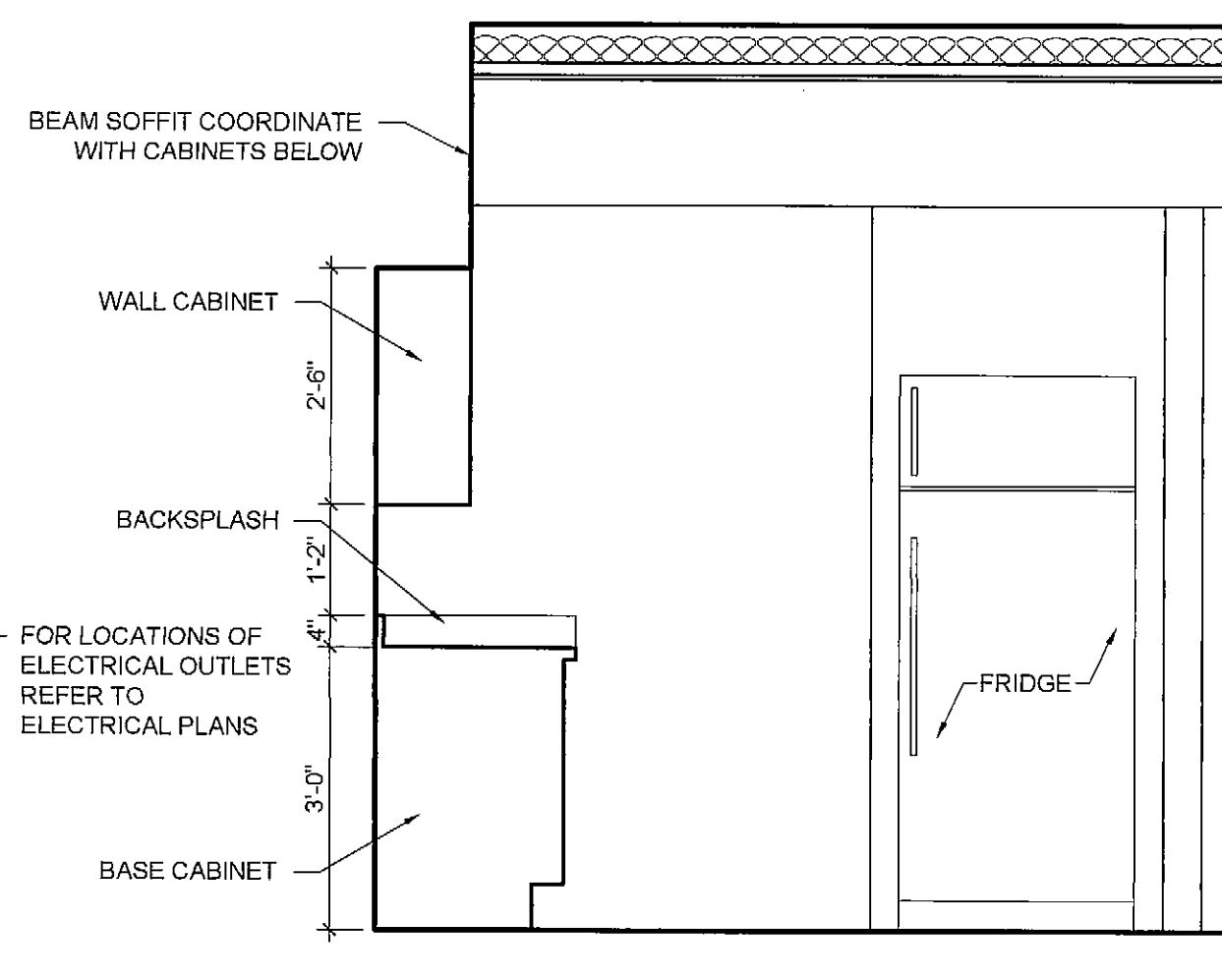
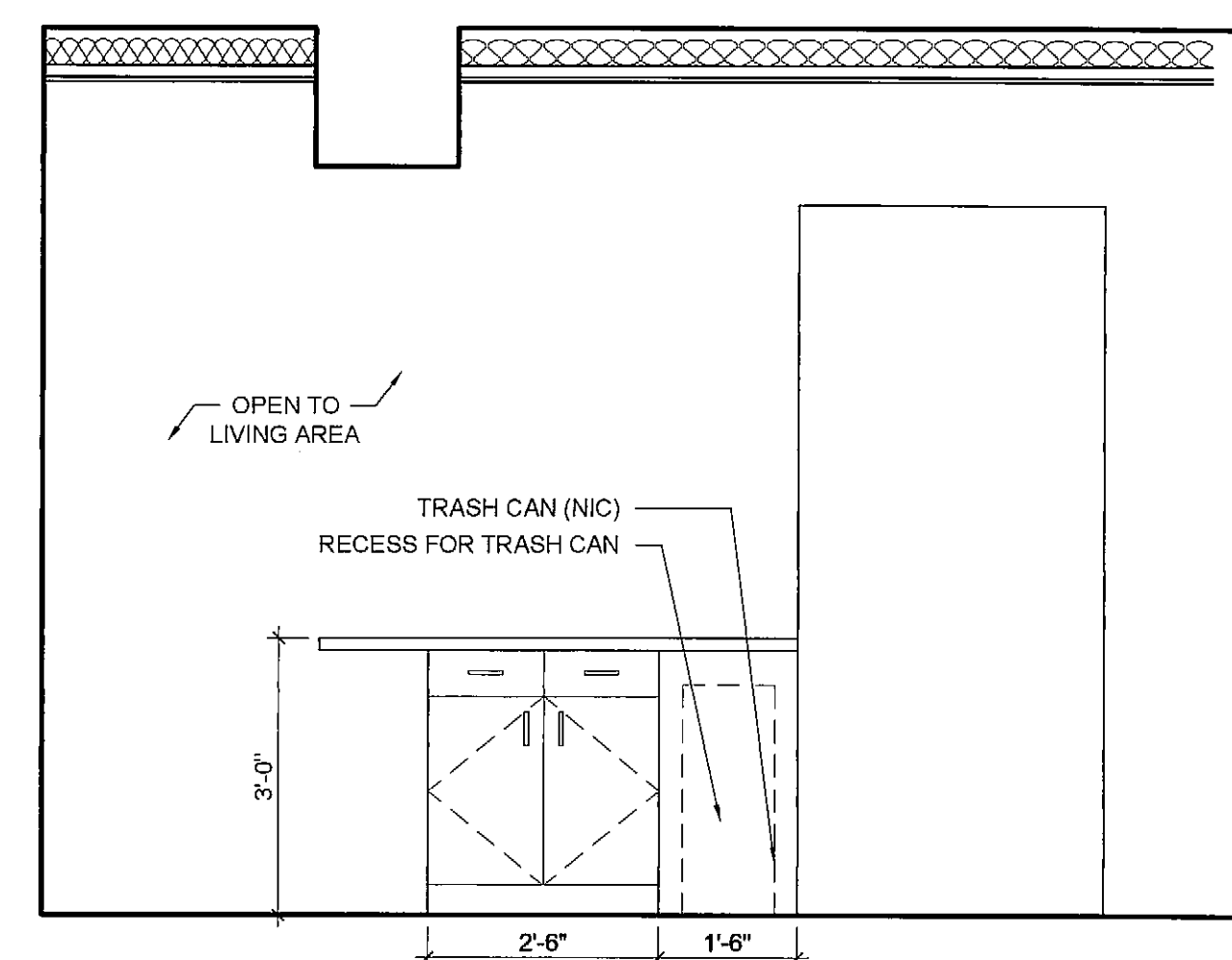


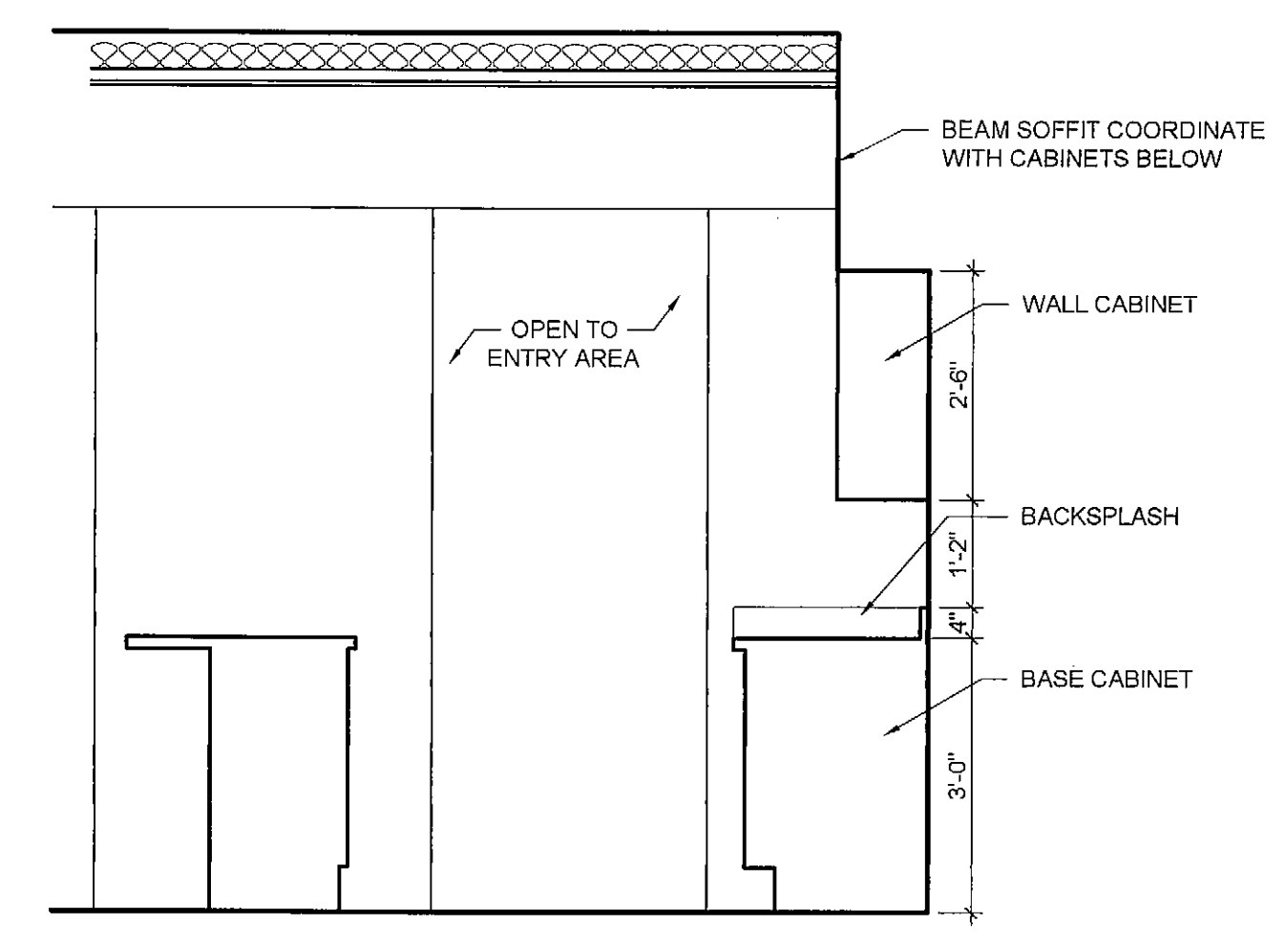
11 KITCHEN ELEVATION
A4.0 1/2" = 1'-0"



10 KITCHEN ELEVATION
A4.0 1/2" = 1'-0"

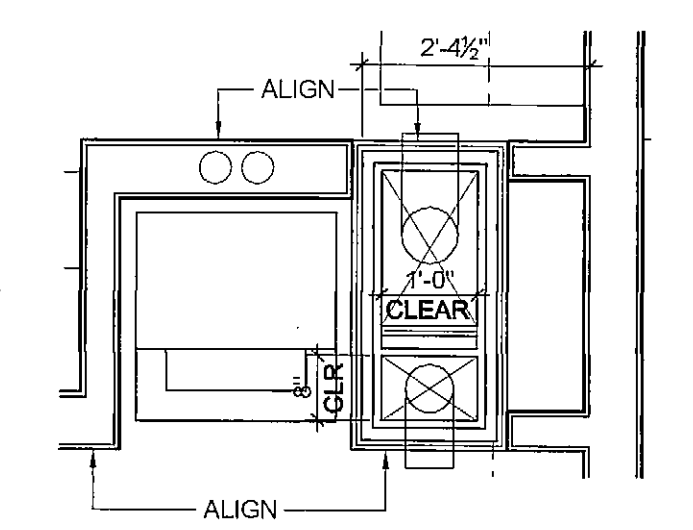


9 KITCHEN ELEVATION
A4.0 1/2" = 1'-0"

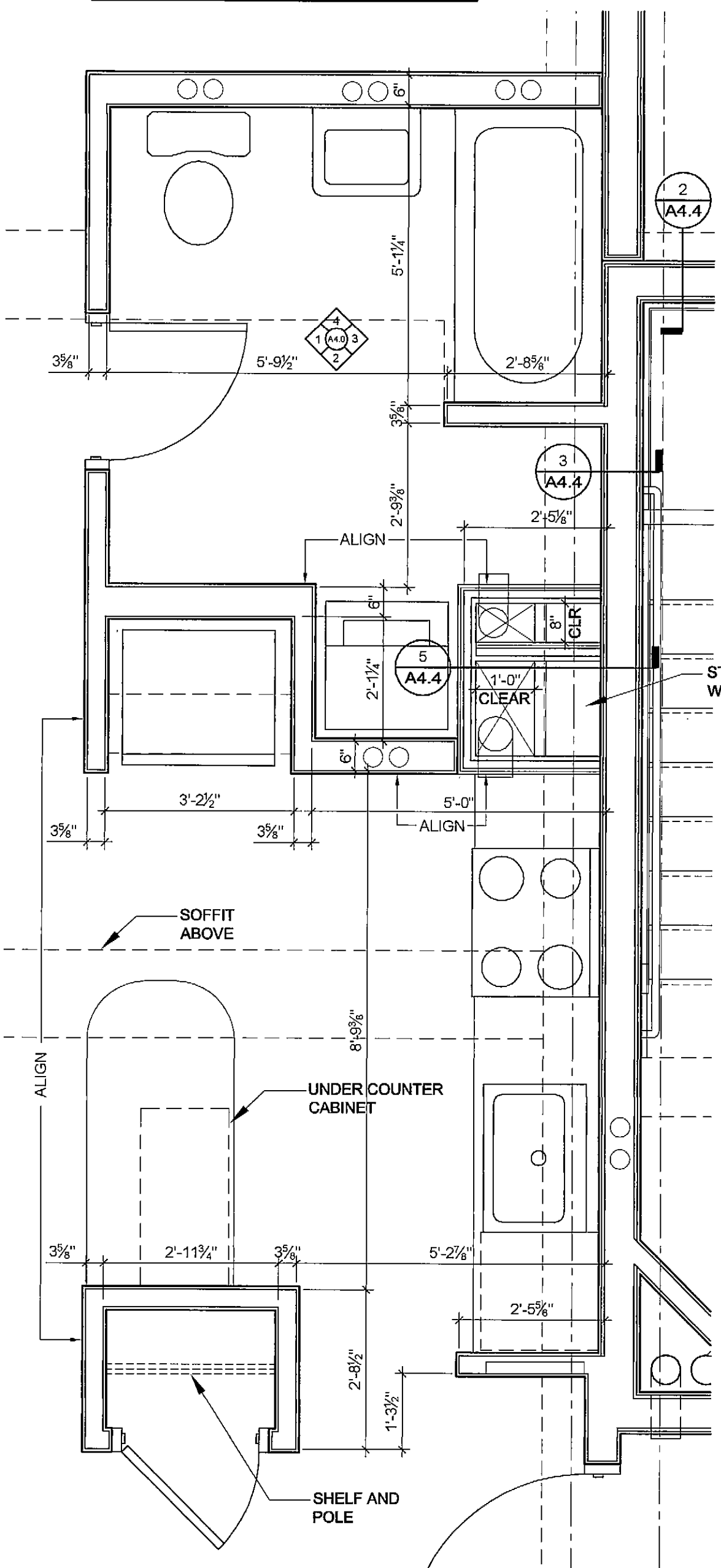


8 KITCHEN ELEVATION
A4.0 1/2" = 1'-0"

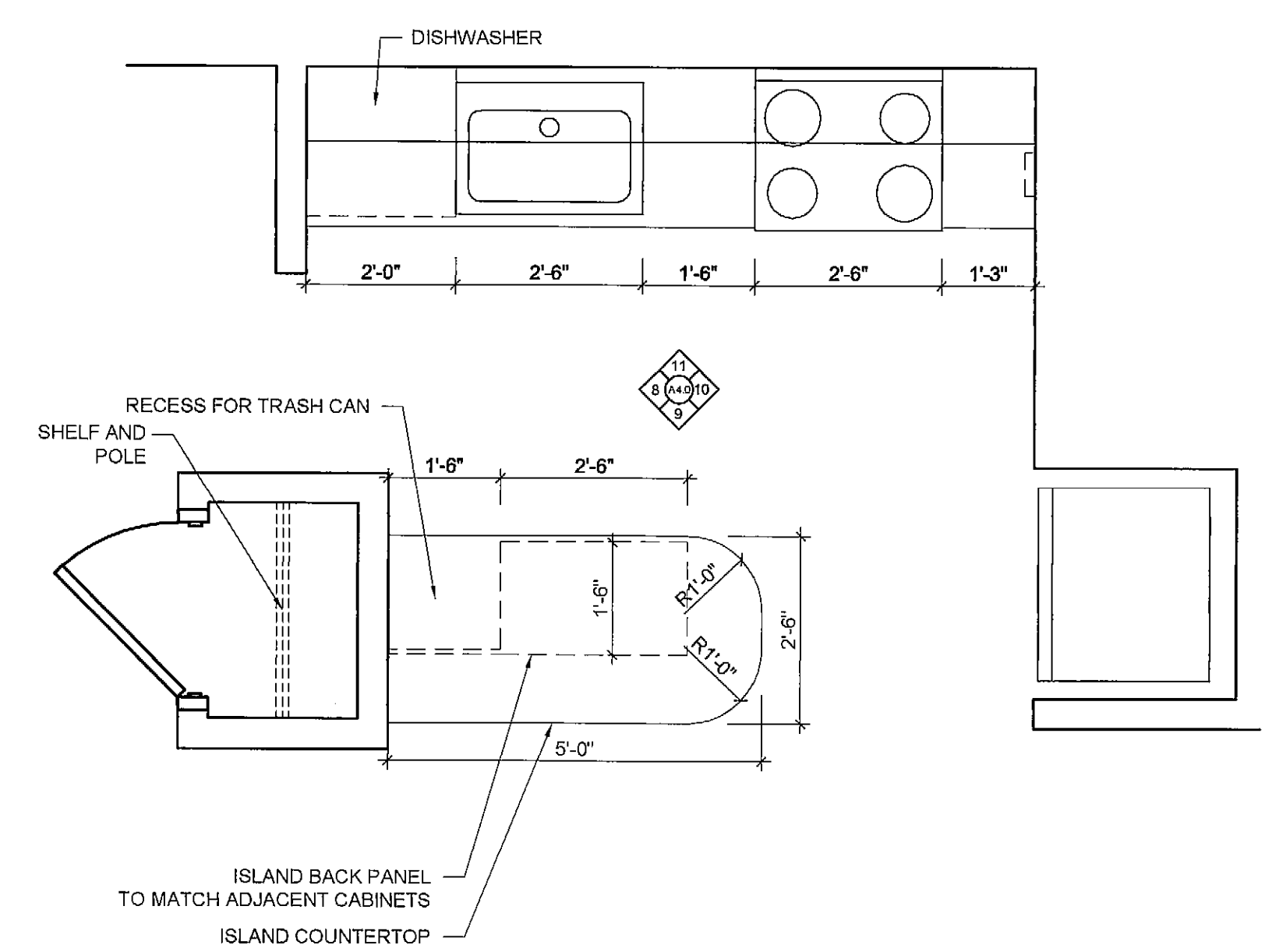
ENLARGED PLAN NOTES:
 1.) DIMENSIONS ARE TO FACE OF STUD
 2.) REFER TO PLAN SHEETS TO LOCATE CORE IN EACH INDIVIDUAL UNIT



7 TYPICAL MIDDLE UNIT CHASE PLAN DETAIL
A4.0 1/2" = 1'-0"

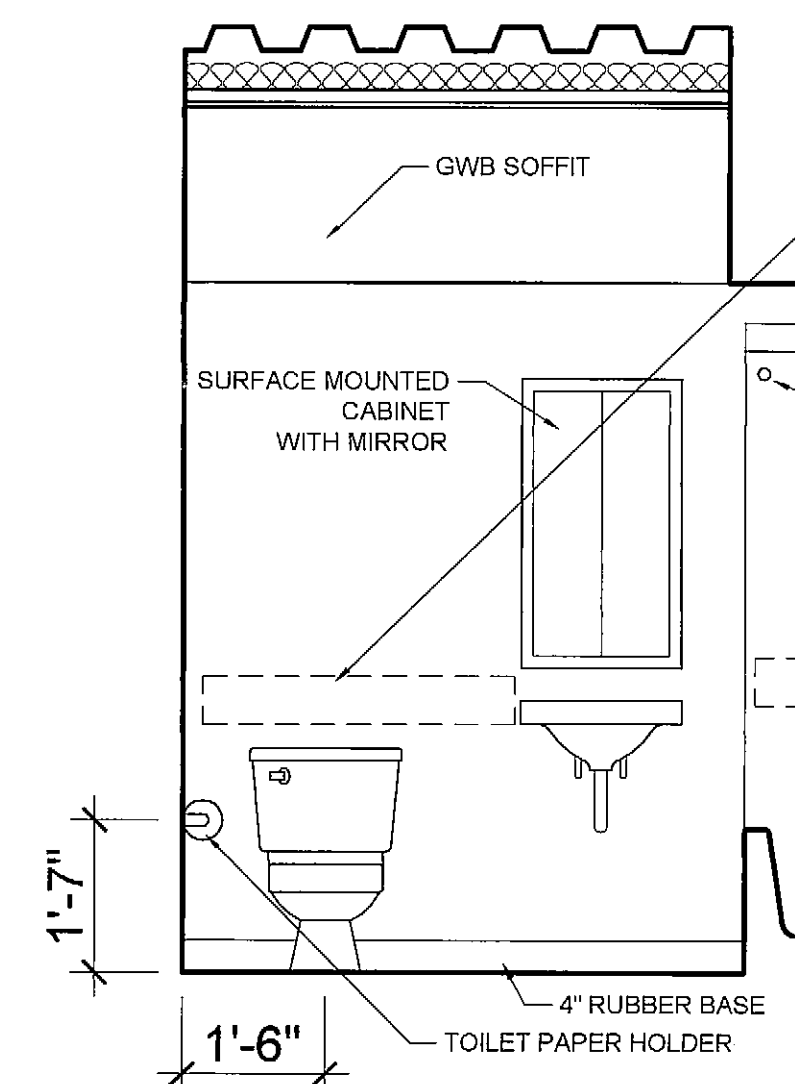


5 TYPICAL CORNER UNIT FLOORS (2-6) CORE PLAN
A4.0 1/2" = 1'-0"

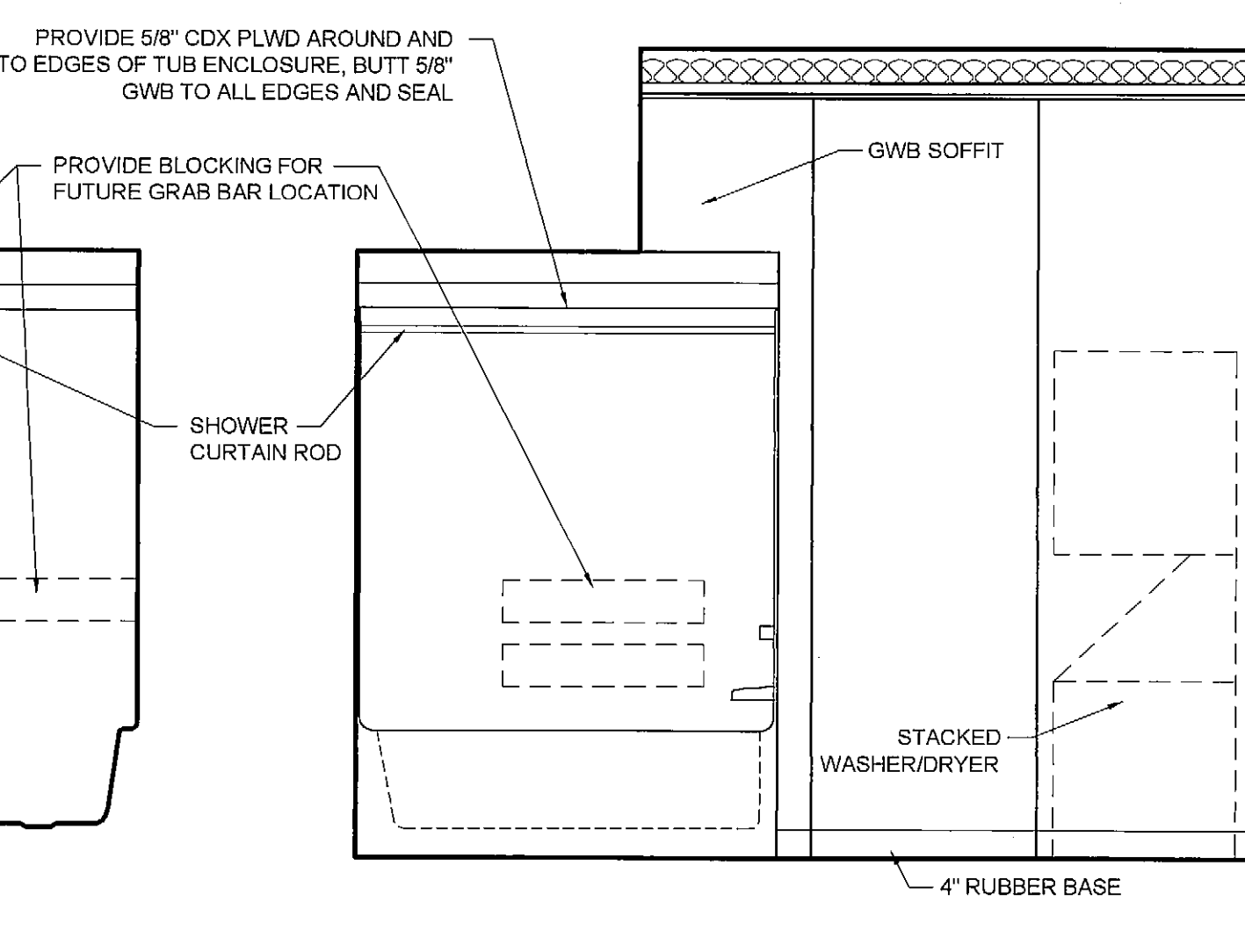


6 TYPICAL KITCHEN CABINERY PLAN
A4.0 1/2" = 1'-0"

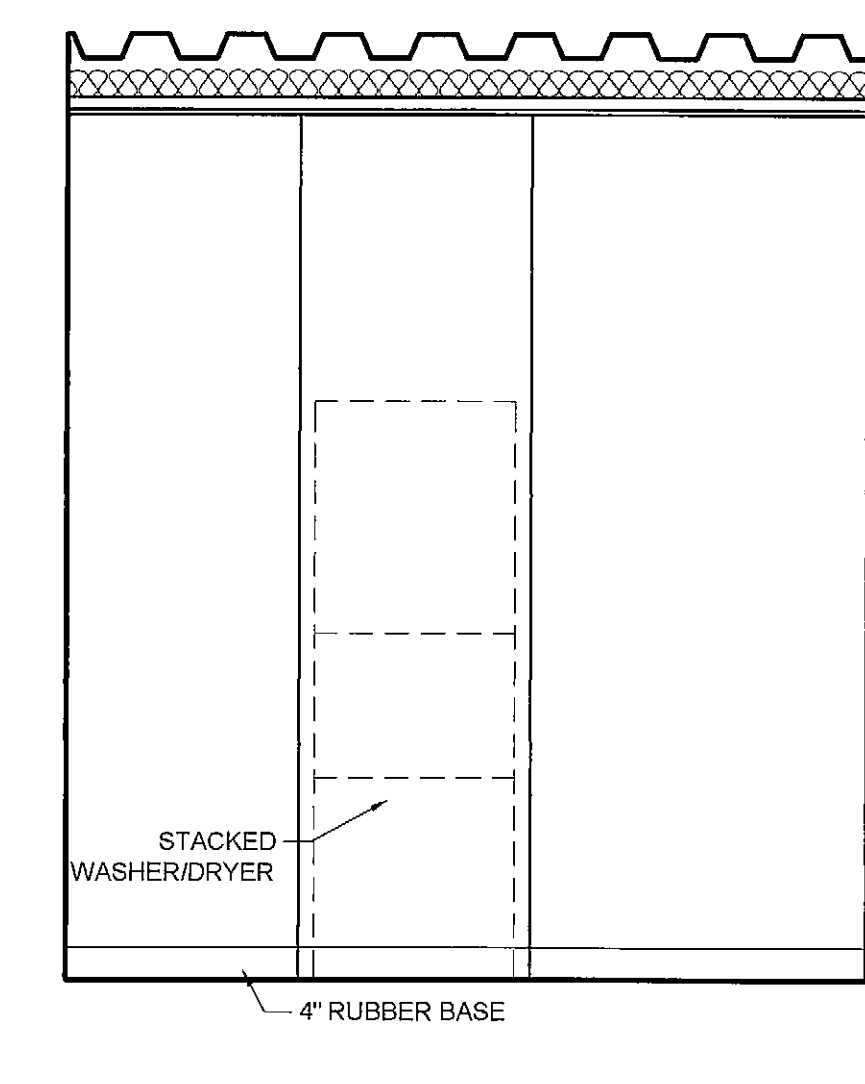
NOTE:
 1. PROVIDE APPROPRIATE BLOCKING IN WALLS BEHIND ALL FIXTURES, PARTITIONS AND ACCESSORIES. BLOCKING FOR GRAB BARS TO BE PROVIDED IN WALLS OF BATHROOMS AT ACCESSIBLE UNIT AS WELL AS NON ACCESSIBLE UNITS
 2. PROVIDE MOISTURE RESISTANT GWB AT ALL WALLS IN BATHROOMS TYPICAL



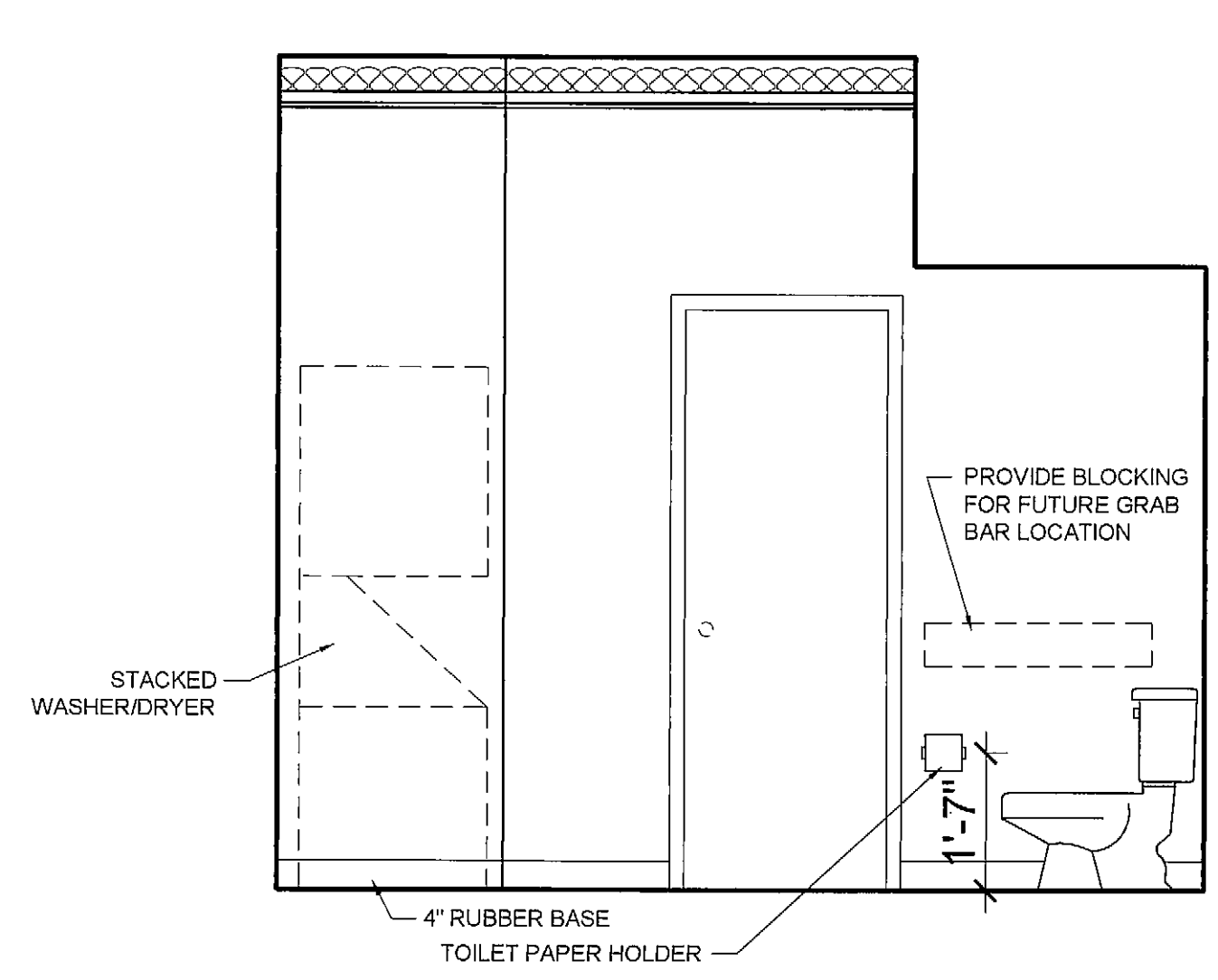
4 BATHROOM ELEVATION
A4.0 1/2" = 1'-0"



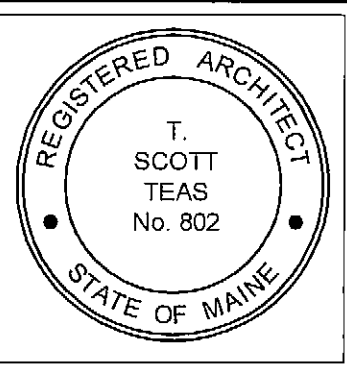
3 BATHROOM ELEVATION
A4.0 1/2" = 1'-0"



2 BATHROOM ELEVATION
A4.0 1/2" = 1'-0"



1 BATHROOM ELEVATION
A4.0 1/2" = 1'-0"



© 2005 TFH ARCHITECTS

CHESTNUT STREET LOFTS
 URBAN REVITALIZATION PROJECT
 BY CHESTNUT STREET LLC.
 PORTLAND, MAINE

TFH ARCHITECTS
 100 COMMERCIAL STREET
 PORTLAND MAINE 04101
 TELEPHONE 207 775 6141
 ARCHITECTURE PLANNING

CONSULTANTS:
CIVIL
 Land Use Consultants
 100 Riverside Street
 Portland, ME 04103
 207-678-3313
STRUCTURAL
 Structural Design Consulting
 22 Oakmont Drive
 Old Orchard Beach, ME 04054
 207-934-8038
MECHANICAL
 Wilbey Engineering
 10 Oakmont Street
 Portland, ME 04101
 207-674-7443
ELECTRICAL
 Bennett Engineering
 7 Bennett Road
 Freeport, ME 04032
 207-866-6475

REVISIONS:
 1 100% CONSTRUCTION DOCUMENTS
 2 22.24.05
 DATE:
 PROJECT No. 0422
 DRAWN BY: RJS
 CHECKED BY: TST
 SCALE: AS NOTED

SHEET TITLE:
 TYPICAL KITCHEN AND BATH LAYOUT
 INTERIOR ELEVATIONS

A4.0