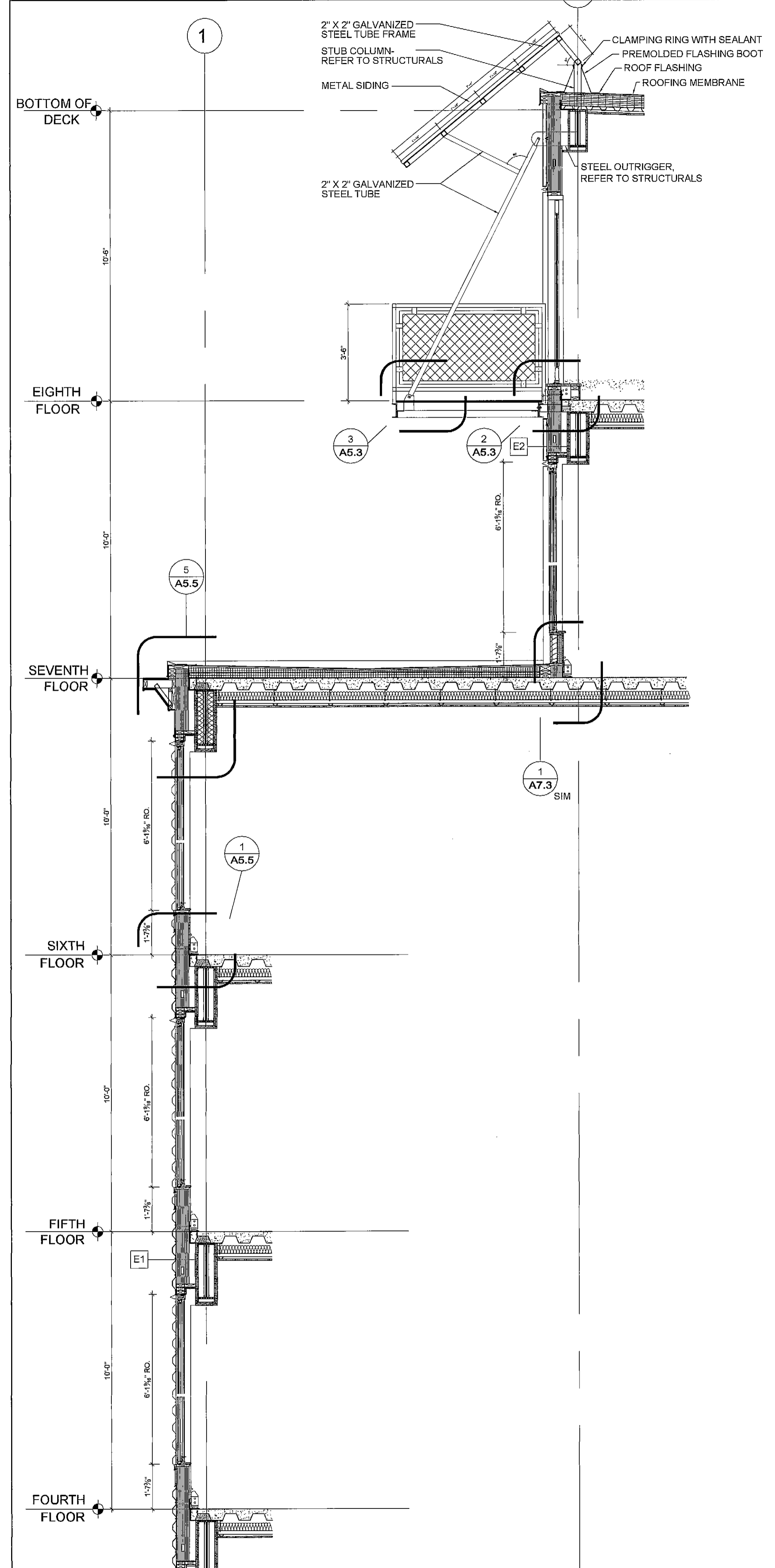
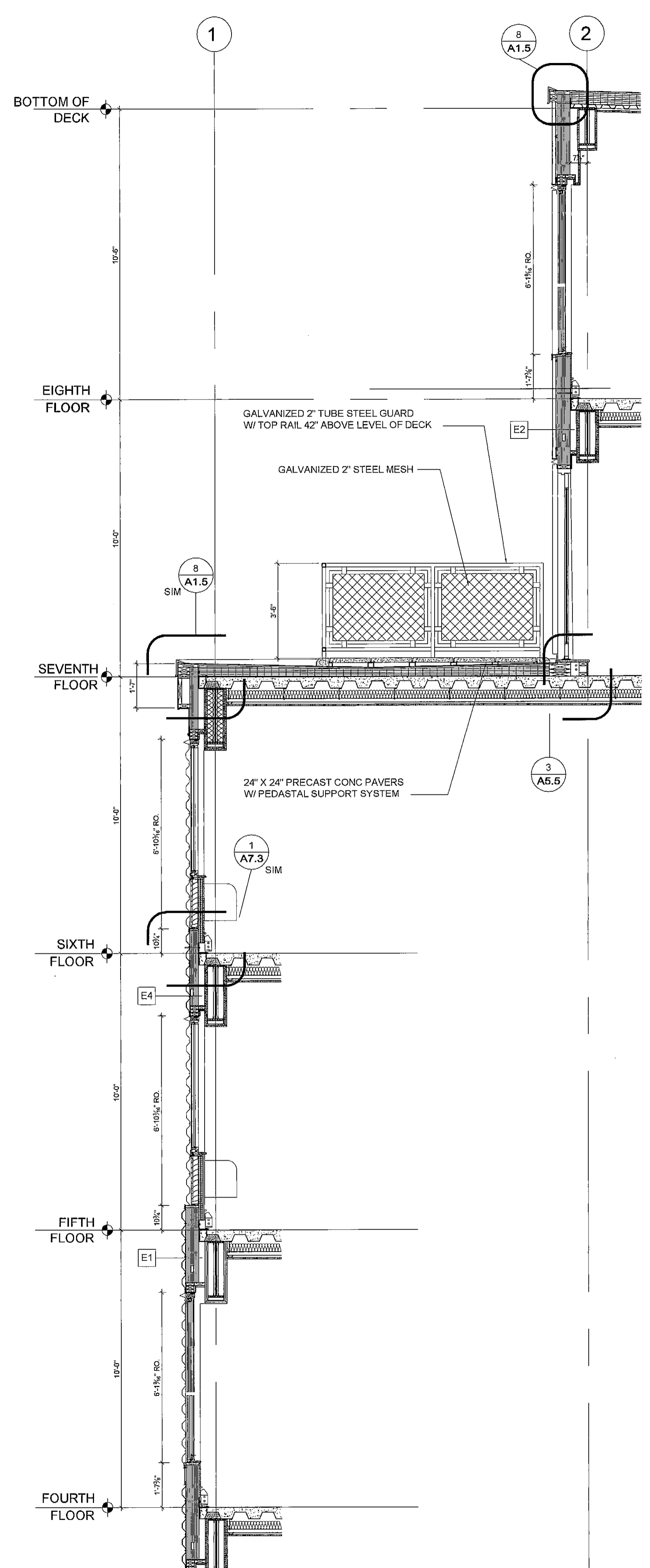


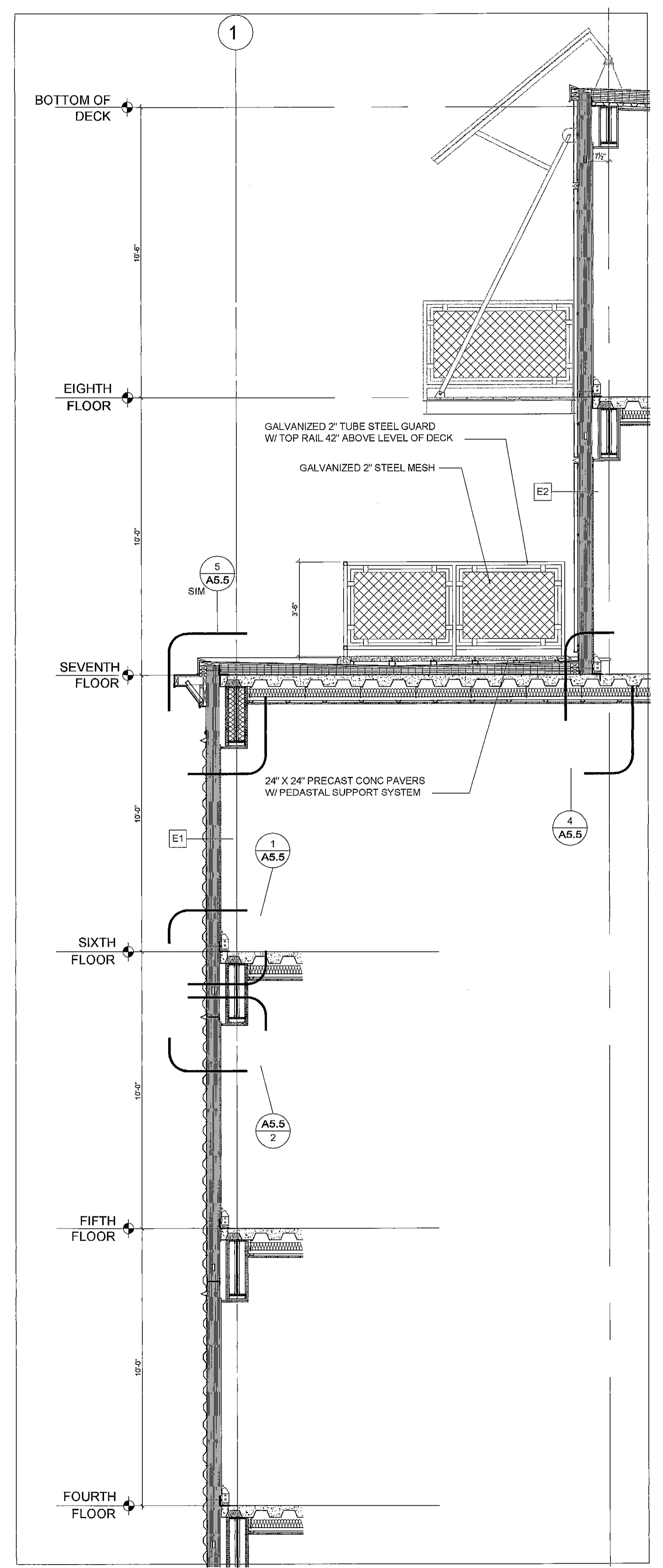
T:\00_TFH Projects\0422_Chestnut Street\Construction Documents\05_Details\0422_Section Details_revised.dwg, 2/24/2008 8:48:53 AM, HP, DwgPlotter 7500 Plus (E..._A03.dwg)



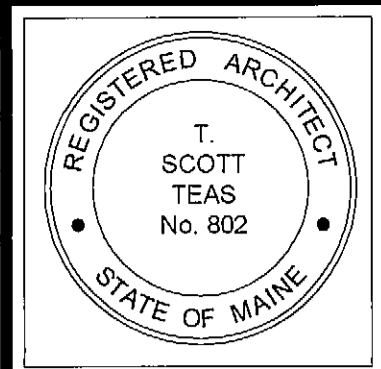
3 WALL SECTION
A3.1 3/8" = 1'-0"



2 WALL SECTION
A3.1 3/8" = 1'-0"



1 WALL SECTION
A3.1 3/8" = 1'-0"



© 2005 TFH ARCHITECTS

CHESTNUT STREET LOFTS
URBAN REVITALIZATION PROJECT
BY CHESTNUT STREET LLC.
PORTLAND, MAINE

TFH ARCHITECTS
100 COMMERCIAL STREET
PORTLAND MAINE 04101
TELEPHONE 207 775 6141
ARCHITECTURE PLANNING

- CONSULTANTS:
- LAND Use Consultants
966 Riverside Street
Portland, ME 04113
207-878-3313
 - STRUCTURAL
Structural Design Consulting
22 Oakmont Drive
Old Orchard Beach, ME 04054
207-934-6059
 - MECHANICAL
Whitney Engineering
10 Carlton Street
Portland, ME 04111
207-874-7449
 - ELECTRICAL
Bennett Engineering
7 Bennett Road
Freeport, ME 04032
207-862-6475

REVISIONS:

2 100% CONSTRUCTION DOCUMENTS
02/24/08

DATE: 12.7.05
PROJECT No. 0422
DRAWN BY: WFA
CHECKED BY: TST
SCALE: AS NOTED

SHEET TITLE:
WALL SECTIONS

A3.1