

© 2005 TFH ARCHITECTS

CHESTNUT STREET LOFTS

URBAN REVITALIZATION PROJECT
BY CHESTNUT STREET LLC,
PORTLAND, MAINE

TFH ARCHITECTS
100 COMMERCIAL STREET
PORTLAND MAINE 04101
TELEPHONE 207 775 6141
ARCHITECTURE PLANNING

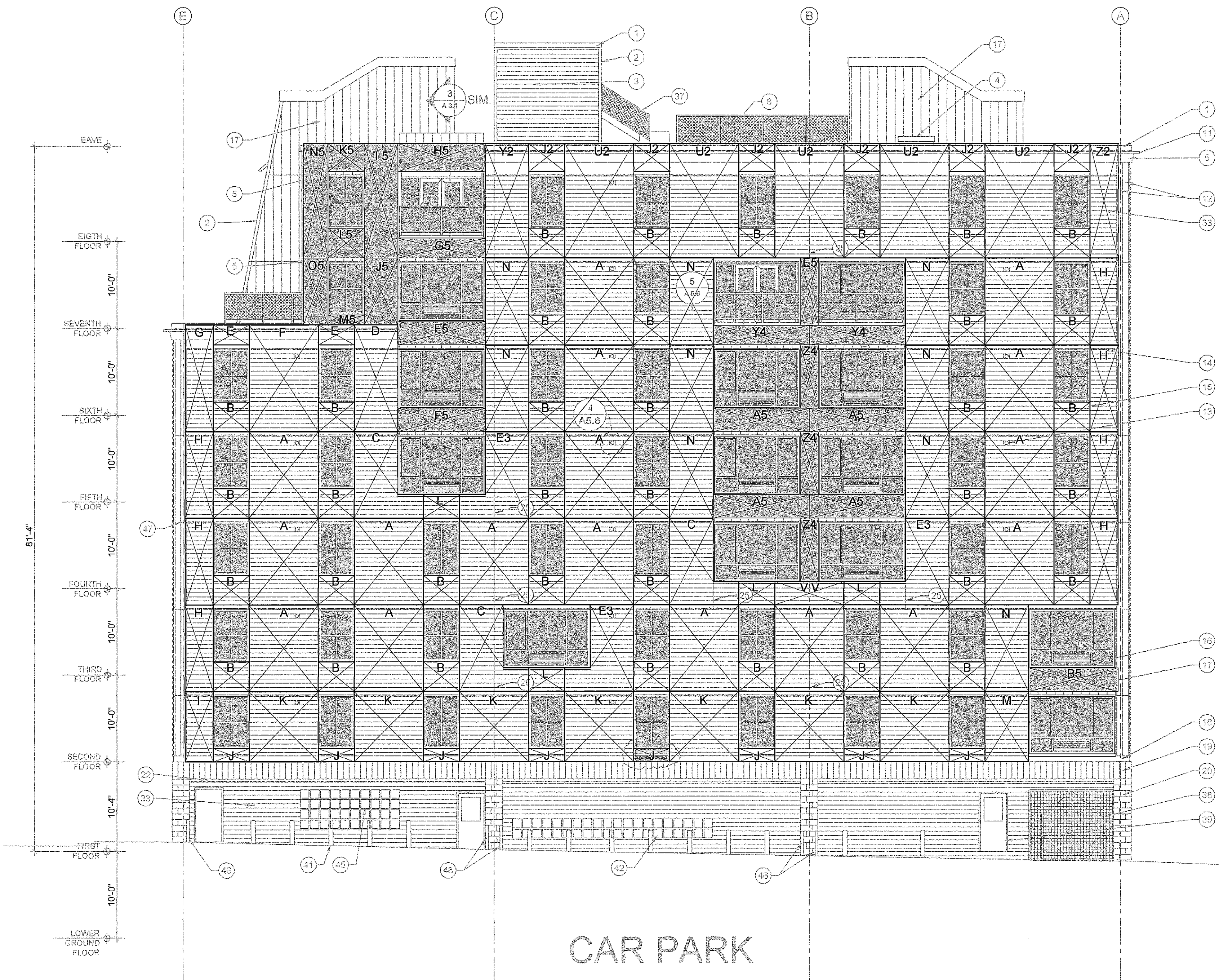
CONSULTANTS:
CIVIL:
Land Use Consultants
966 Riverside Street
Portland, ME 04103
207-678-3313
STRUCTURAL:
Structural Design Consulting
22 Oakmont Drive
Old Orchard Beach, ME 04054
207-934-6038
MECHANICAL:
Whitney Engineering
10 Dunbar Street
Portland, ME 04101
207-674-7448
ELECTRICAL:
Bennett Engineering
7 Bennett Road
Prescott, ME 04052
207-466-6475

REVISIONS:
1 100% CONSTRUCTION DOCUMENTS
2 02.24.06

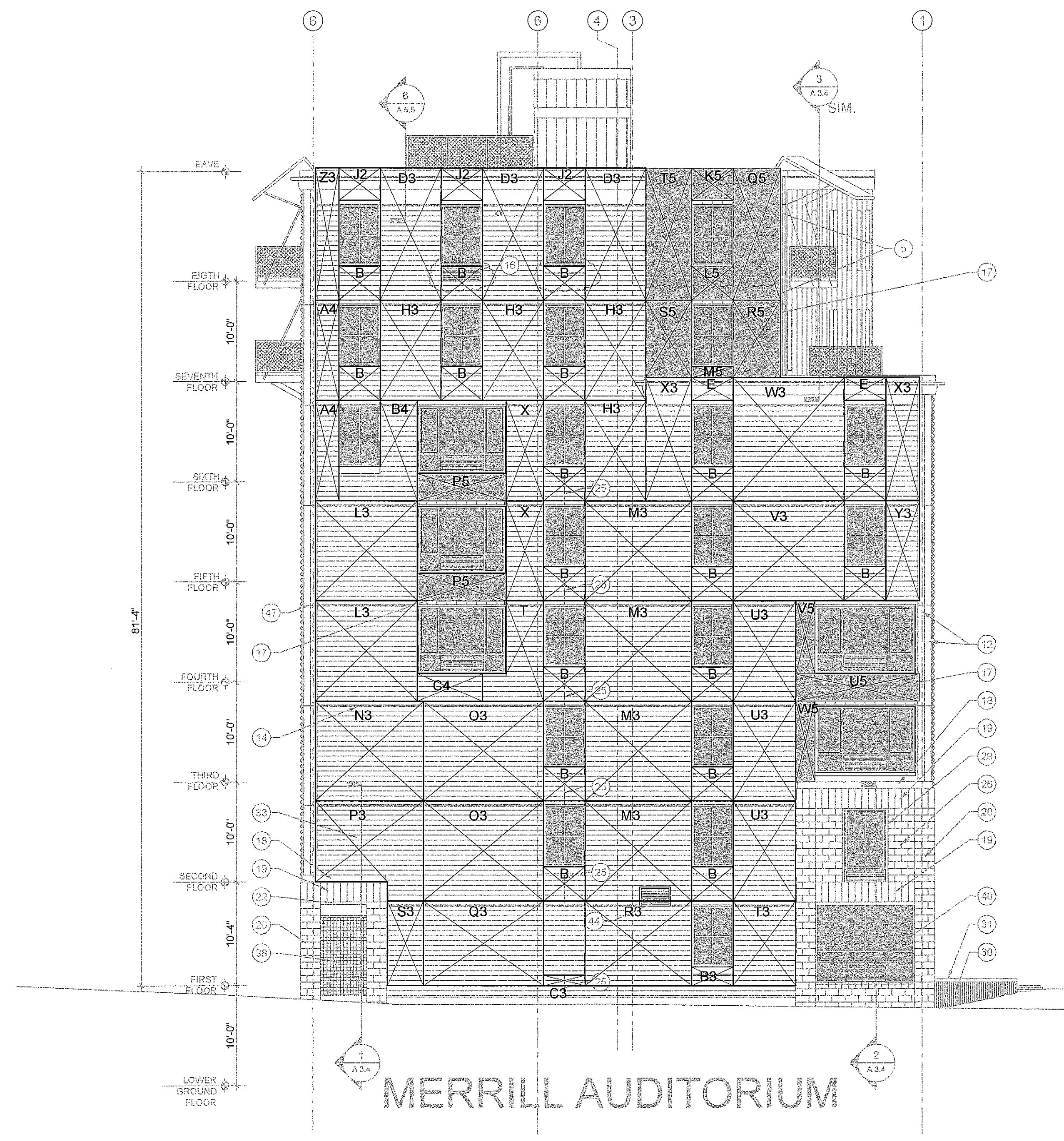
DATE:
PROJECT No. 0422
DRAWN BY: RJS
CHECKED BY: TST
SCALE: AS NOTED

SHEET TITLE:
THERMASTRUCT.
PANEL
ELEVATIONS

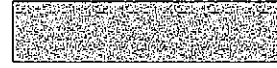
A2.3



1 EAST ELEVATION WALL PANELS
1/8" = 1'-0"



2 NORTH ELEVATION WALL PANELS
1/8" = 1'-0"

PANEL ELEVATION NOTES:
1. PANELS SHOWN ARE A SCHEMATIC LAYOUT
2. PANEL MANUFACTURER TO PROVIDE SHOP DRAWINGS FOR ALL PANELS, CONNECTIONS, ETC.
3. PANELS TO BE 5-1/2" THICKNESS
4. SHADED PANELS TO BE 3-1/2" THICKNESS AS INDICATED BY 

T:\00_TFH Projects\0422_Chestnut Street\Construction Documents\02_Elevations\A2.3-Elevations of Panels.dwg, 2/23/2006 2:33:44 PM, HP Desktop 750C Plus (E_40).ip3