

© 2005 TFH ARCHITECTS

CHESTNUT STREET LOFTS

URBAN REVITALIZATION PROJECT
BY CHESTNUT STREET LLC,
PORTLAND, MAINE

TFH ARCHITECTS
100 COMMERCIAL STREET
PORTLAND MAINE 04101
TELEPHONE 207 775 6141
ARCHITECTURE PLANNING

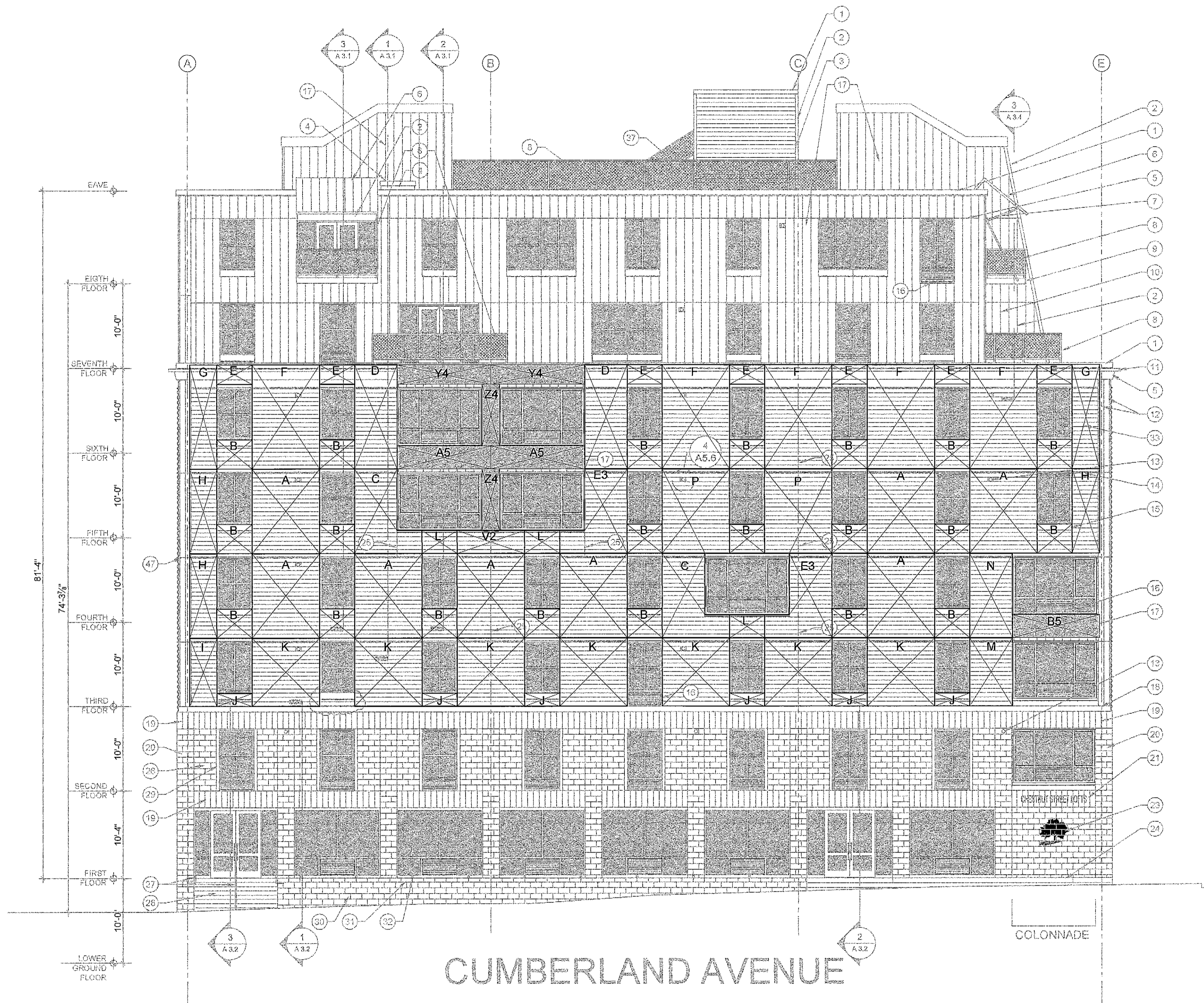
CONSULTANTS:
CIVIL:
Lark Usa Consultants
968 Riverside Street
Portland, ME 04103
207-478-5313
STRUCTURAL:
Structural Design Consulting
27 Oakwood Drive
Old Orchard Beach, ME 04064
207-934-8038
MECHANICAL:
Whitney Engineering
10 Danforth Street
Portland, ME 04101
207-874-7449
ELECTRICAL:
Bennett Engineering
7 Bennett Road
Freeport, ME 04032
207-862-9475

REVISIONS:
2 100% CONSTRUCTION DOCUMENTS
02.24.05

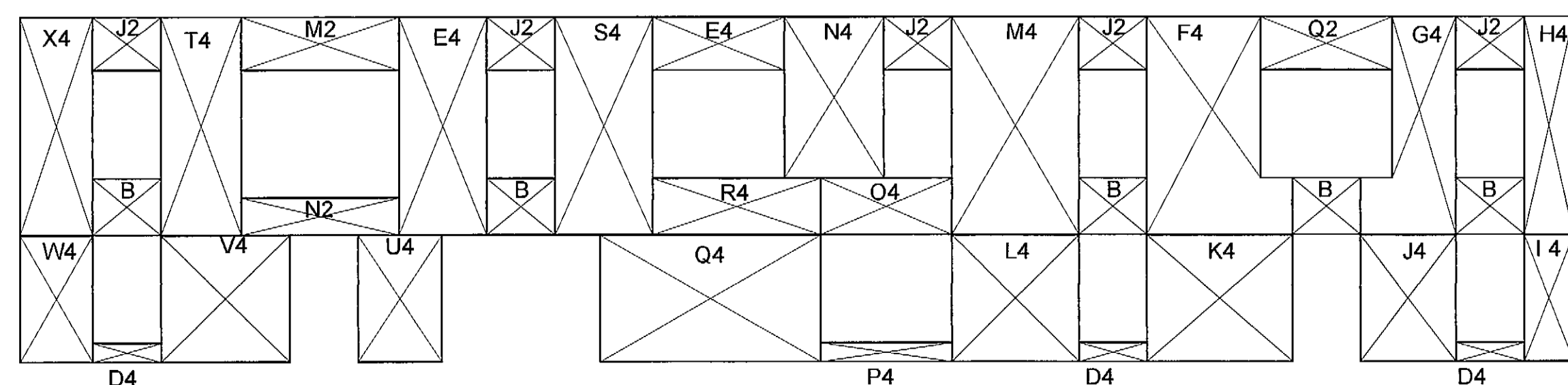
DATE:
PROJECT No. 0422
DRAWN BY: RJS
CHECKED BY: TST
SCALE: AS NOTED

SHEET TITLE:
**THERMASTRUCT.
PANEL
ELEVATIONS**

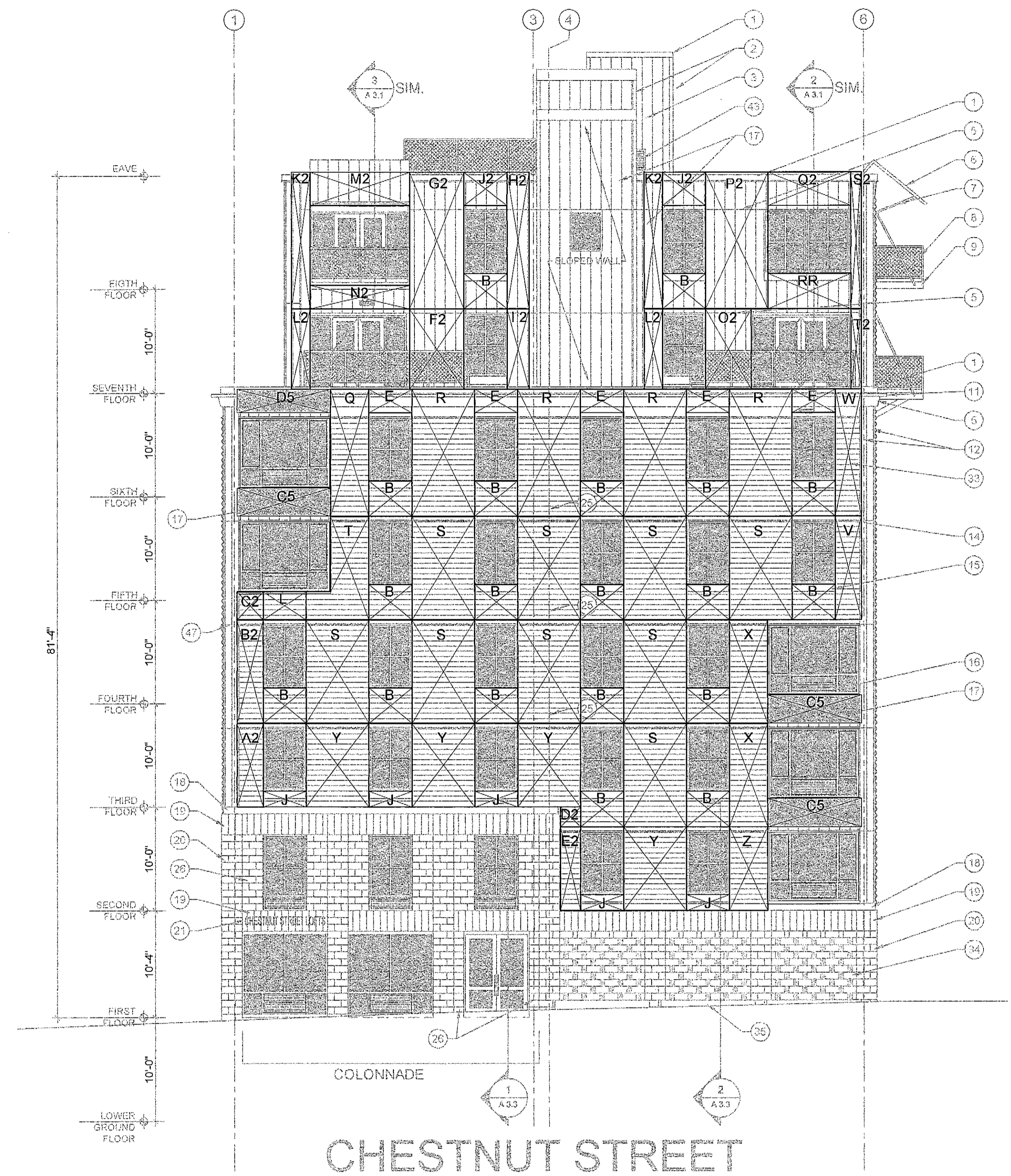
A2.2



1 WEST ELEVATION WALL PANELS
1/8" = 1'-0"



1 WEST ELEVATION 7TH AND 8TH FLOOR WALL PANELS
1/8" = 1'-0"



2 SOUTH ELEVATION WALL PANELS
1/8" = 1'-0"

PANEL ELEVATION NOTES:

1. PANELS SHOWN ARE A SCHEMATIC LAYOUT
2. PANEL MANUFACTURER TO PROVIDE SHOP DRAWINGS FOR ALL PANELS, CONNECTIONS, ETC.
3. PANELS TO BE 5-1/2" THICKNESS
4. SHADED PANELS TO BE 3-1/2" THICKNESS AS INDICATED BY 