

© 2005 TFH ARCHITECTS

# CHESTNUT STREET LOFTS

URBAN REVITALIZATION PROJECT  
BY CHESTNUT STREET LLC,  
PORTLAND, MAINE

TFH ARCHITECTS  
100 COMMERCIAL STREET  
PORTLAND MAINE 04101  
TELEPHONE 207 775 6141  
ARCHITECTURE PLANNING

CONSULTANTS:  
**CIVIL:**  
Land Use Consultants  
999 Riverside Street  
Portland, ME 04103  
207-878-3310  
**STRUCTURAL:**  
Structural Design Consulting  
23 Oakmont Drive  
Old Orchard Beach, ME 04054  
207-834-8000  
**MECHANICAL:**  
Whitney Engineering  
10 Danforth Street  
Portland, ME 04101  
207-874-7489  
**ELECTRICAL:**  
Bennett Engineering  
7 Bennett Road  
Fryeburg, ME 04032  
207-865-6475

REVISIONS:  
1. 100% CONSTRUCTION DOCUMENTS  
22.24.06

DATE:  
PROJECT No. 0422  
DRAWN BY: RJS  
CHECKED BY: TST  
SCALE: AS NOTED

SHEET TITLE:  
SEVENTH AND EIGHTH FLOOR  
REFLECTED  
CEILING PLANS

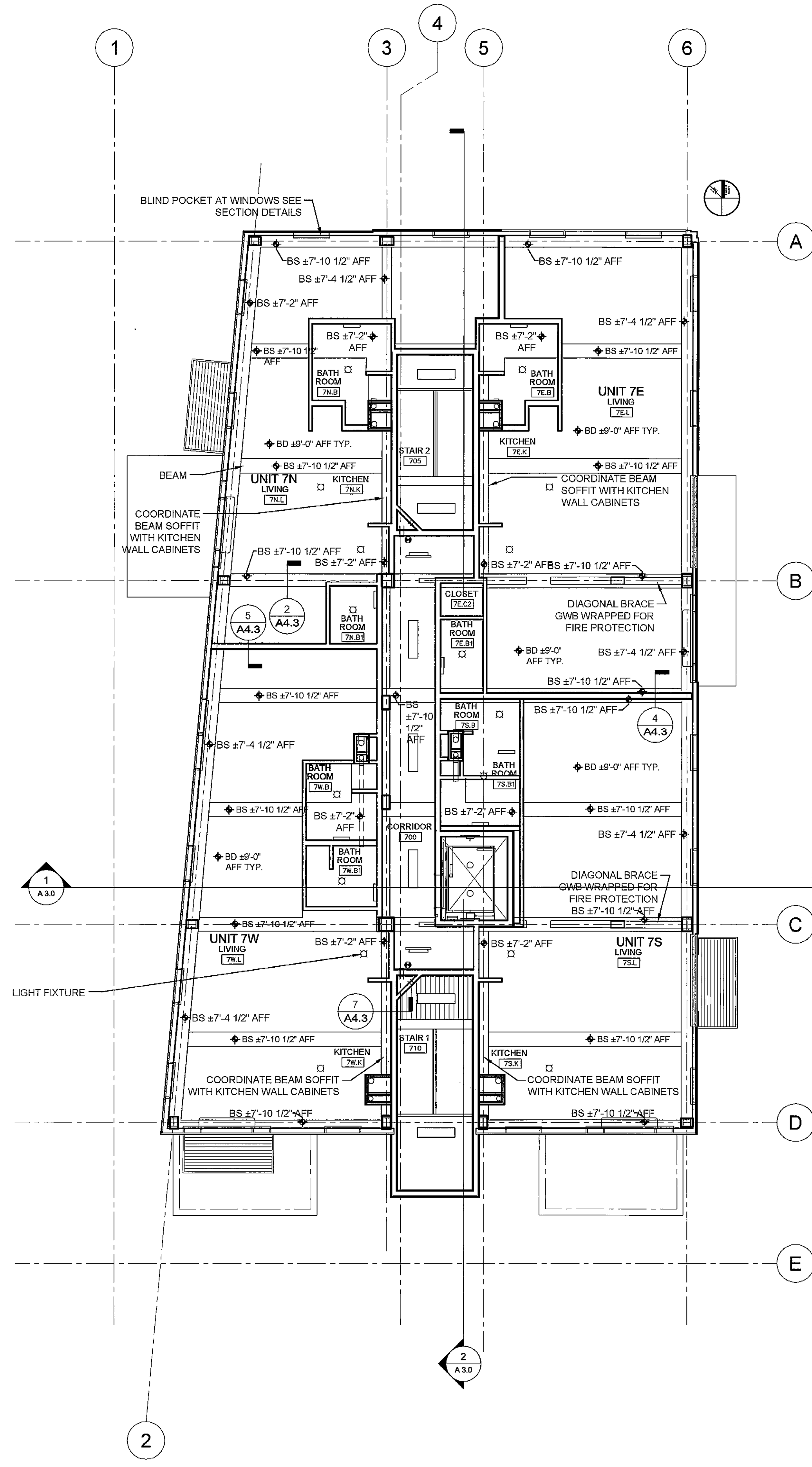
## A1.10

### REFLECTED CEILING PLAN NOTES AND LEGEND

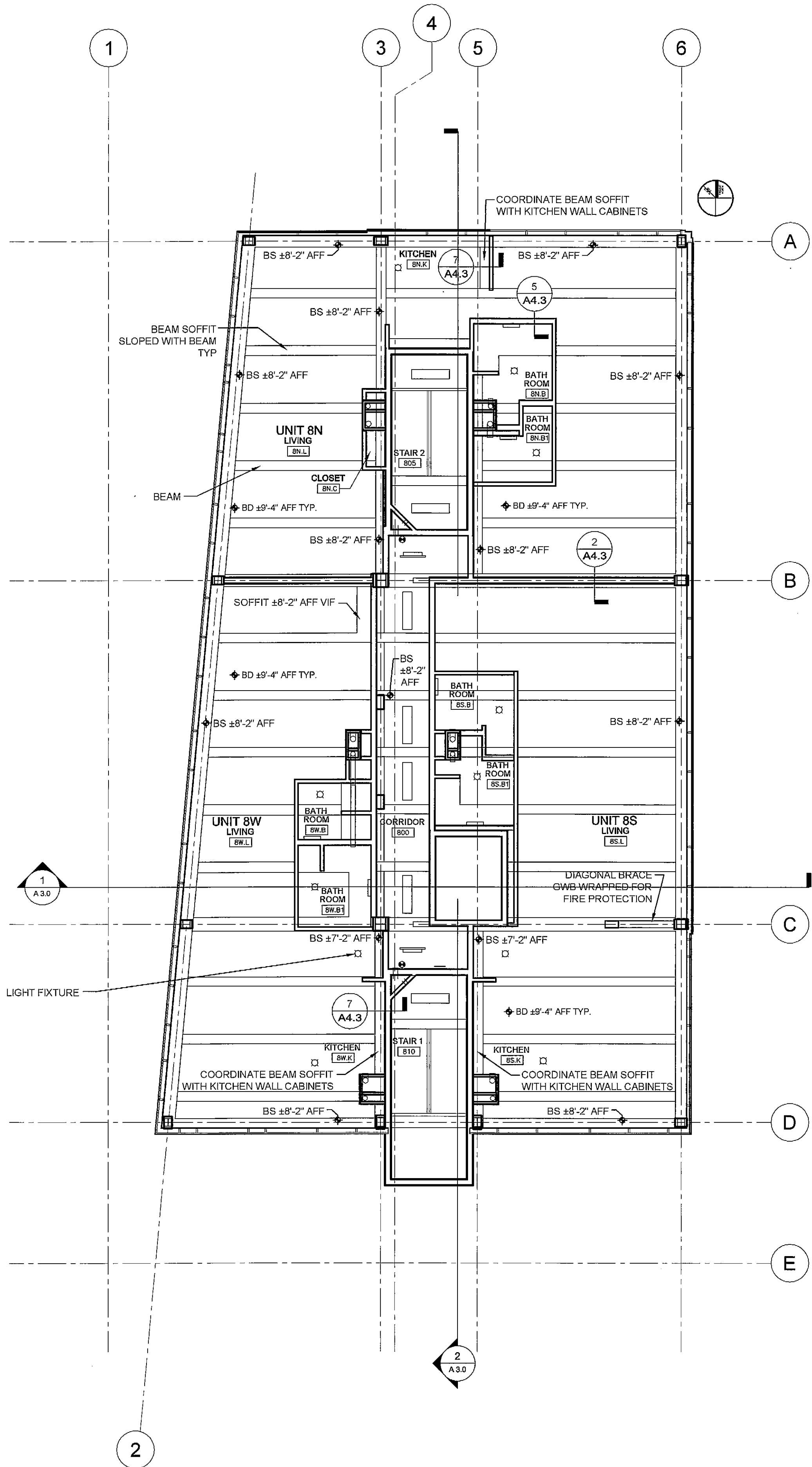
- GENERAL RCP NOTES:  
1) BS = BOTTOM OF SOFFIT  
2) BD = BOTTOM OF SUSPENDED GWB  
CEILING  
3) LIGHT FIXTURES SHOWN  
4) STRUCTURAL BEAM DEPTHS VARY BY LOCATION  
SOFFITS TO BE BUILT TO ELEVATIONS AS INDICATED  
ON REFLECTED CEILING PLANS

GWB SOFFIT
------------

NOTE:  
SUSPENDED GYP CEILINGS TO BE:  
3/4" GYP BOARD  
SUSPENDED METAL GRID  
5" BATT INSULATION  
WIRE/NEOPRENE VIBRATION ISOLATOR HANGER



1 SEVENTH FLOOR REFLECTED CEILING PLAN  
A1.10 1/8" = 1'-0"



2 EIGHTH FLOOR REFLECTED CEILING PLAN  
A1.10 1/8" = 1'-0"

T:\00\_TFH Projects\0422\_Chestnut Street\Construction Documents\01-Floor Plans\022\_07-08 Seventh and Eighth Floor Reflected Ceiling Plans\A1.10.dwg, 2/23/2006 2:12:28 PM, HP Design\JL7506 Plus (E - 40).pc3