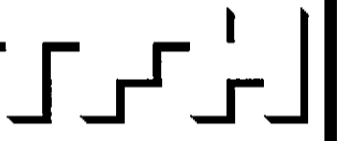


© 2005 TFH ARCHITECTS

CHESTNUT STREET LOFTS
URBAN REVITALIZATION PROJECT
BY CHESTNUT STREET LLC,
PORTLAND, MAINE



TFH ARCHITECTS
100 COMMERCIAL STREET
PORTLAND MAINE 04101
TELEPHONE 207 775 6141
ARCHITECTURE PLANNING

CONSULTANTS:
Civil: Land Use Consultants
985 Riverside Street
Portland, ME 04103
207-878-5319
Structural: Structural Design Consulting
22 Oakwood Drive
Old Orchard Beach, ME 04054
207-638-8035
Mechanical: Wilsey Engineering
10 Dunfords Street
Portland, ME 04101
207-874-7469
Electrical: Bennett Engineering
7 Bennett Road
Fryeburg, ME 04032
207-855-8475

REVISIONS:
2. CONSTRUCTION DOCUMENTS
02.24.06

DATE:
PROJECT No. 0422
DRAWN BY: RJS
CHECKED BY: TST
SCALE: AS NOTED

SHEET TITLE:
FIFTH AND
SIXTH FLOOR
REFLECTED
CEILING PLANS

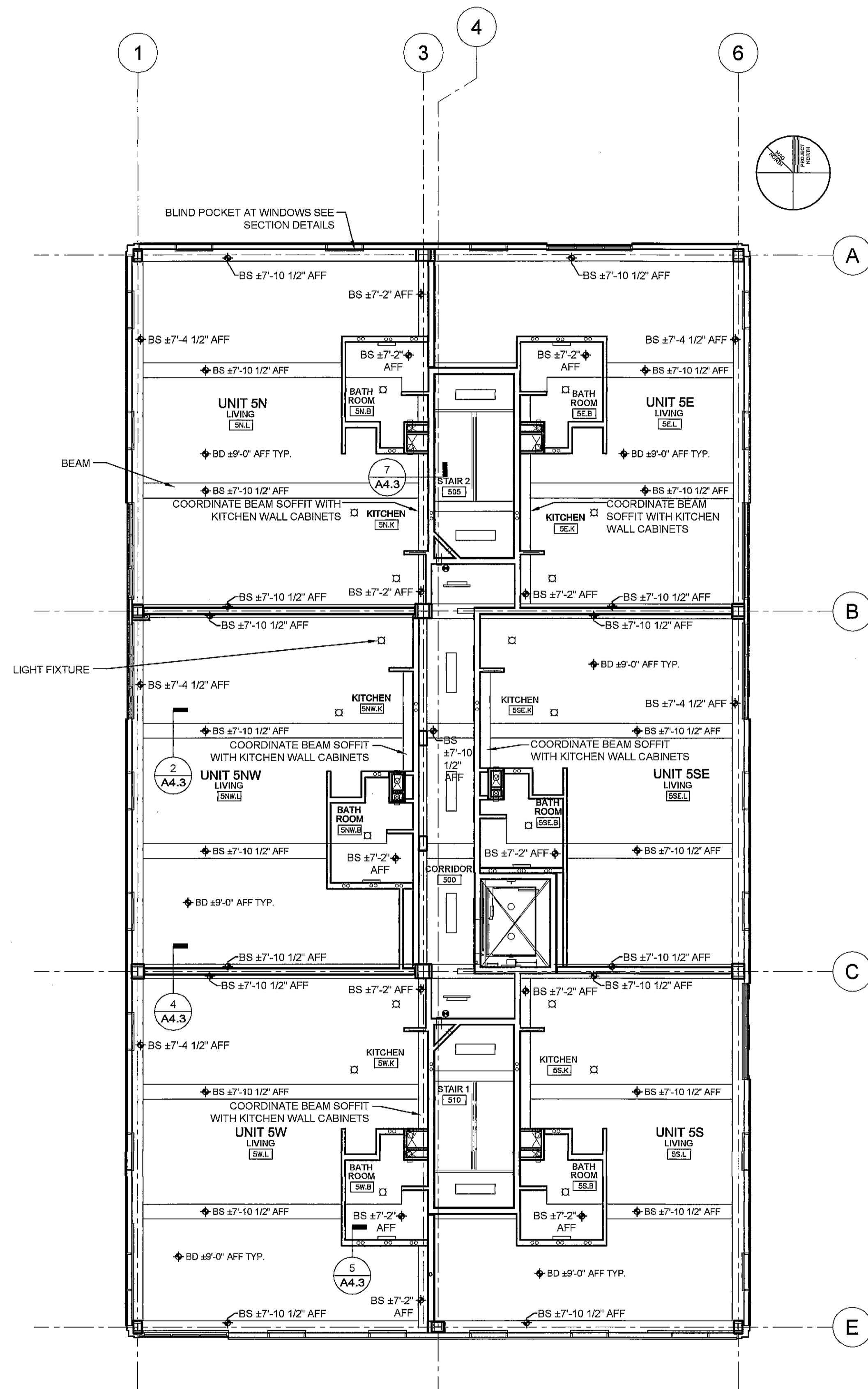
A1.9

**REFLECTED CEILING PLAN
NOTES AND LEGEND**

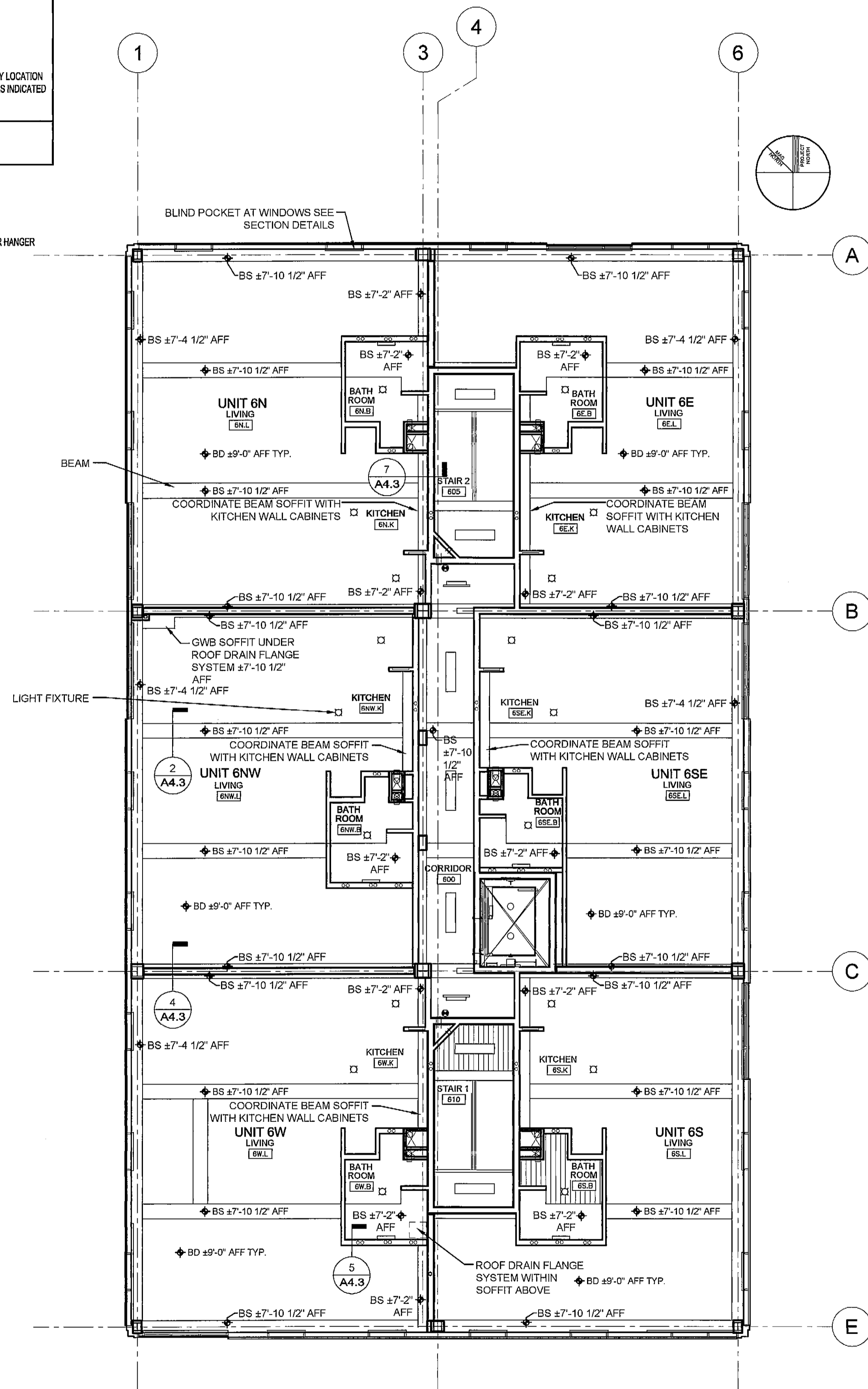
GENERAL RCP NOTES:
1.) BS = BOTTOM OF SOFFIT
2.) BD = BOTTOM OF SUSPENDED GWB
CEILING
3.) LIGHT FIXTURES SHOWN
4.) STRUCTURAL BEAM DEPTHS VARY BY LOCATION
SOFFITS TO BE BUILT TO ELEVATIONS AS INDICATED
ON REFLECTED CEILING PLANS

GWB SOFFIT

NOTE:
SUSPENDED GYP CEILINGS TO BE:
3/4" GYP BOARD
SUSPENDED METAL GRID
5" BATT INSULATION
WIRE/NEOPRENE VIBRATION ISOLATOR HANGER



1 FIFTH FLOOR REFLECTED CEILING PLAN
A1.8 1/8" = 1'-0"



2 SIXTH FLOOR REFLECTED CEILING PLAN
A1.9 1/8" = 1'-0"

T:\00_TFH\Projects\0422_ChestnutStreet\Construction Documents\01-Floor Plans\0422 - 05-09 Fifth and Sixth Floor Plan.dwg, 2/23/2005 2:10:56 PM, HP DesignJet 750C Plus (E_A0) .pl3