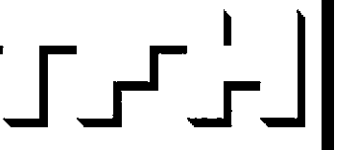


© 2005 TFH ARCHITECTS

CHESTNUT STREET LOFTS
URBAN REVITALIZATION PROJECT
BY CHESTNUT STREET LLC,
PORTLAND, MAINE



TFH ARCHITECTS
100 COMMERCIAL STREET
PORTLAND MAINE 04101
TELEPHONE 207 775 6141
ARCHITECTURE PLANNING

CONSULTANTS:
Civil: Land Use Consultants
985 Riverside Street
Portland, ME 04103
207-878-3313
Structural: Structural Design Consulting
22 Oakland Circle
Old Orchard Beach, ME 04094
207-934-4033
Mechanical: Winney Engineering
10 Durbin Street
Portland, ME 04101
207-874-2449
Electrical: Bennett Engineering
7 Bennett Road
Frenwick, ME 04032
207-865-0476

REVISIONS:
2 100% CONSTRUCTION DOCUMENTS
02.24.05

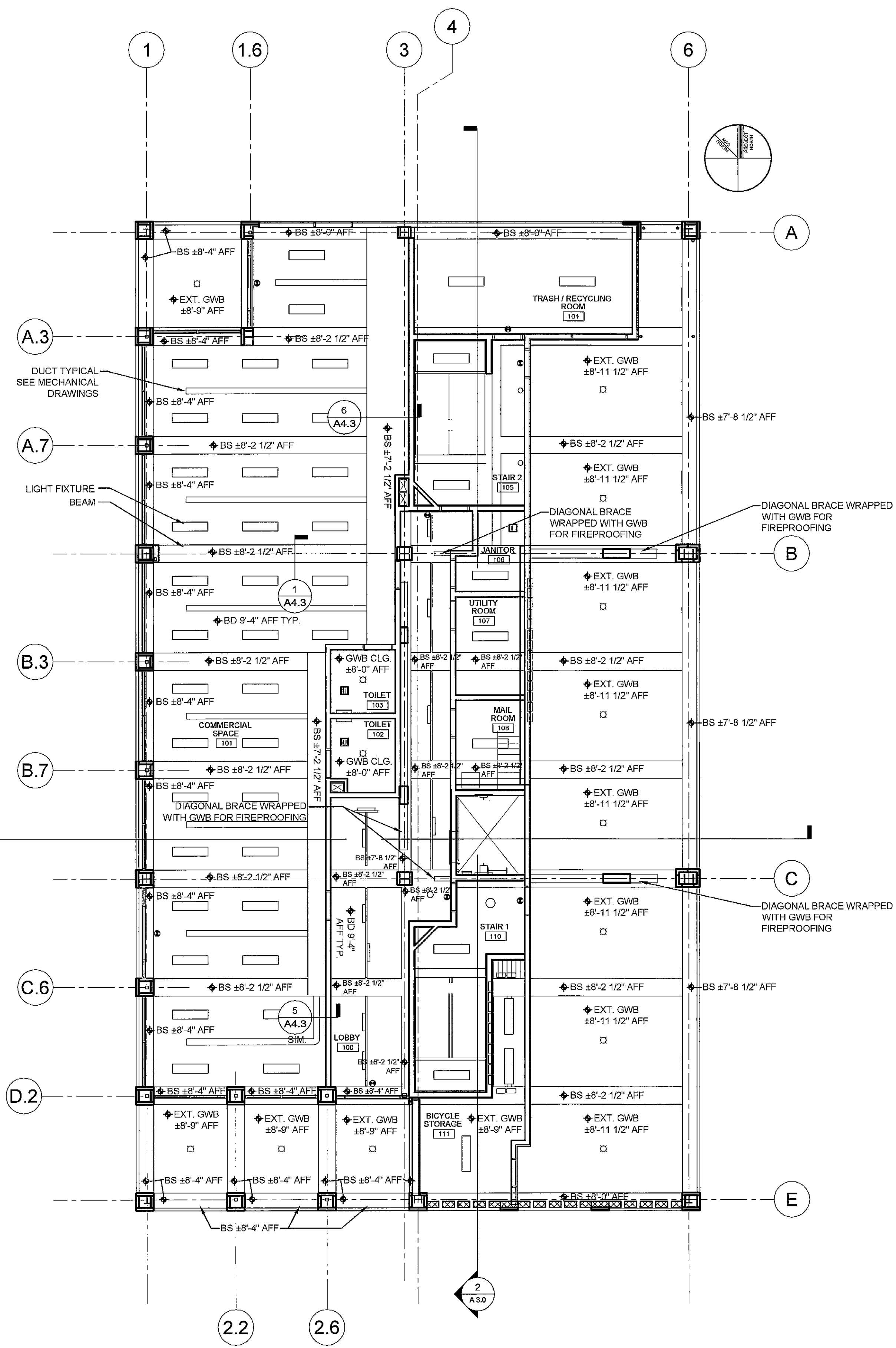
DATE:
PROJECT No. 0422
DRAWN BY: RJS
CHECKED BY: TST
SCALE: AS NOTED

SHEET TITLE:
FIRST AND
SECOND FLOOR
REFLECTED
CEILING PLANS

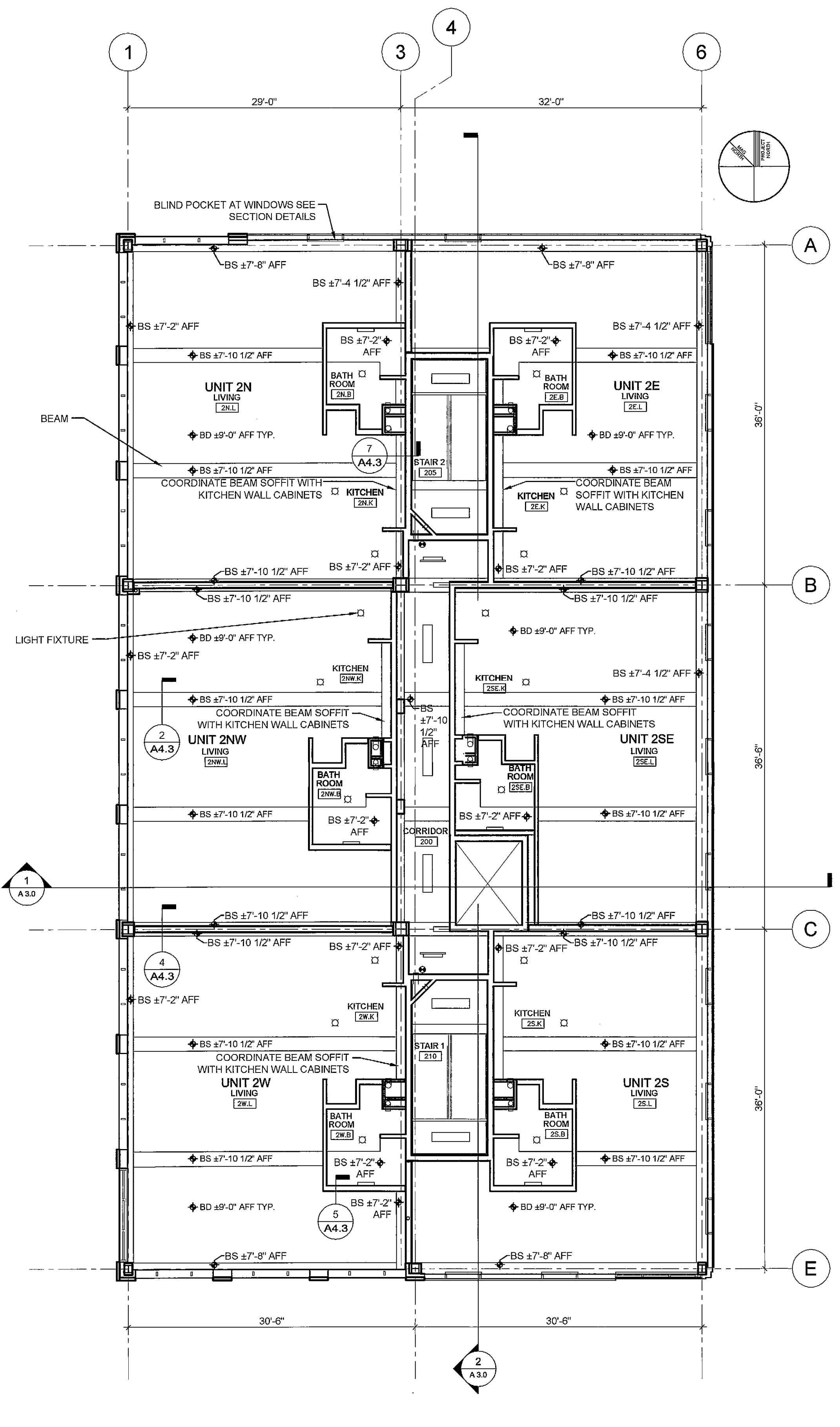
A1.7

REFLECTED CEILING PLAN NOTES AND LEGEND	
GENERAL RCP NOTES:	
1.) BS = BOTTOM OF SOFFIT	
2.) BD = BOTTOM OF SUSPENDED GWB CEILING	
3.) LIGHT FIXTURES SHOWN	
4.) STRUCTURAL BEAM DEPTHS VARY BY LOCATION SOFFITS TO BE BUILT TO ELEVATIONS AS INDICATED ON REFLECTED CEILING PLANS	
	GWB SOFFIT

NOTE:
SUSPENDED GYP CEILINGS TO BE:
3/4" GYP BOARD
SUSPENDED METAL GRID
5" BATT INSULATION
WIRE/NEOPRENE VIBRATION ISOLATOR HANGER



1 FIRST FLOOR REFLECTED CEILING PLAN
1/8" = 1'-0"



2 SECOND FLOOR REFLECTED CEILING PLAN
1/8" = 1'-0"

T:\00_TFH Projects\0422_Chestnut Street\Construction Documents\01_Floor Plans\0422 - 01-02 First and Second Floor Plans.dwg, 2/23/2005 2:48:02 PM, HP DesignJet 750C Plus (E..._00).p3