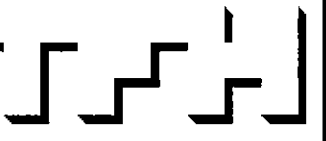


© 2005 TFH ARCHITECTS

CHESTNUT STREET LOFTS

URBAN REVITALIZATION PROJECT
BY CHESTNUT STREET LLC,
PORTLAND, MAINE



TFH ARCHITECTS
100 COMMERCIAL STREET
PORTLAND MAINE 04101
TELEPHONE 207 775 6141
ARCHITECTURE PLANNING

- CONSULTANTS:
- CIVIL:**
Land Use Consultants
955 Riverside Street
Portland, ME 04103
207-878-3315
 - STRUCTURAL:**
Structural Design Consulting
22 Cornwell Drive
Old Orchard Beach, ME 04064
207-999-4039
 - MECHANICAL:**
Whitney Engineering
10 Carlton Street
Portland, ME 04101
207-874-7449
 - ELECTRICAL:**
Bennett Engineering
7 Bennett Road
Fresno, ME 04032
207-855-8476

REVISIONS:
2 100% CONSTRUCTION DOCUMENTS
02.24.06

DATE:
PROJECT No. 0422
DRAWN BY: RJS
CHECKED BY: TST
SCALE: AS NOTED

SHEET TITLE:
BASEMENT REFLECTED
CEILING PLAN

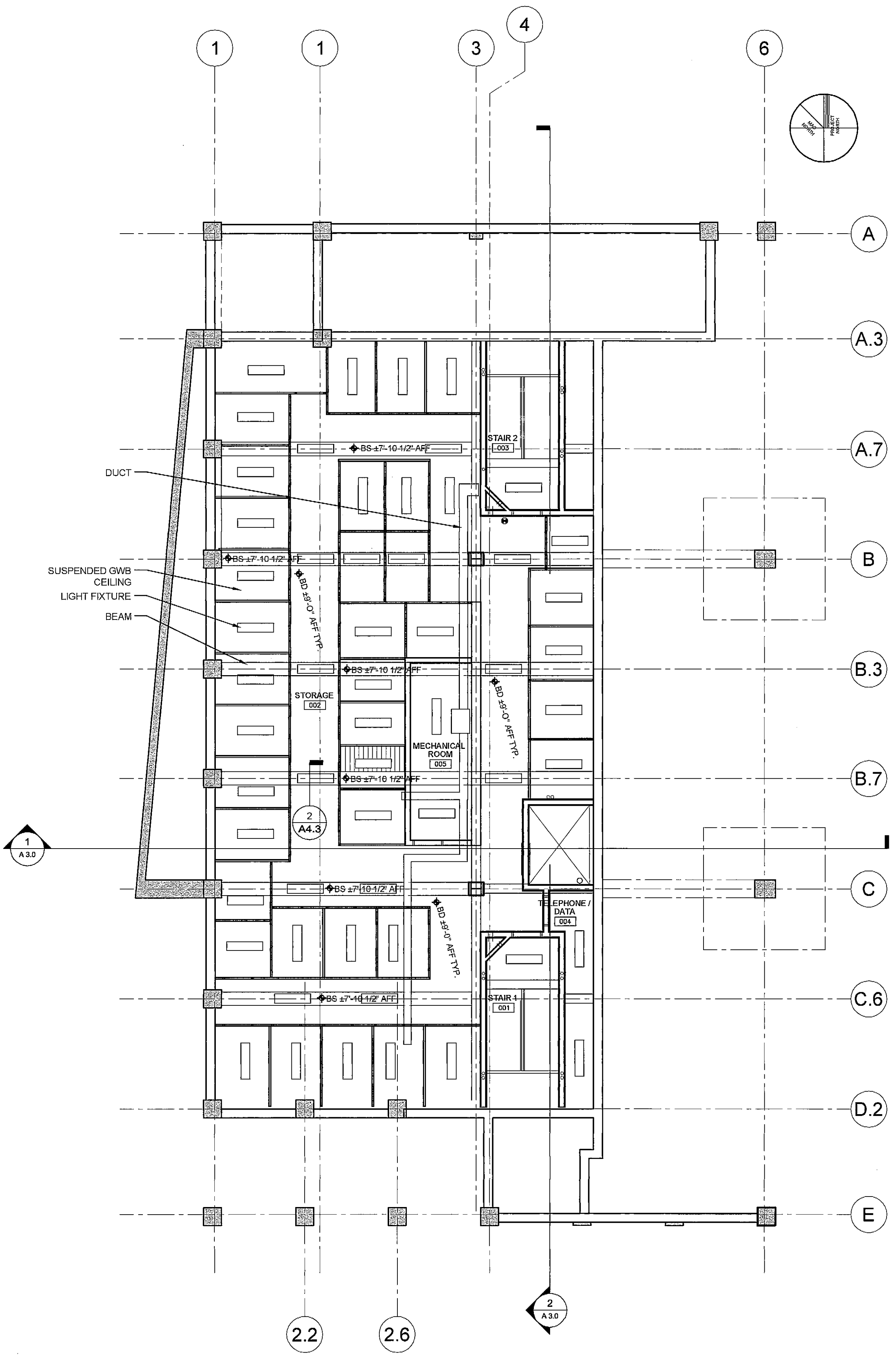
A1.6

**REFLECTED CEILING PLAN
NOTES AND LEGEND**

GENERAL RCP NOTES:
1.) BS = BOTTOM OF SOFFIT
2.) BS = BOTTOM OF SUSPENDED GWB
CEILING
3.) LIGHT FIXTURES SHOWN
4.) STRUCTURAL BEAM DEPTHS VARY BY LOCATION
SOFFITS TO BE BUILT TO ELEVATIONS AS INDICATED
ON REFLECTED CEILING PLANS

	GWB SOFFIT
--	------------

NOTE:
SUSPENDED GYP CEILINGS TO BE:
3/4" GYP BOARD
SUSPENDED METAL GRID
5" BATT INSULATION
WIRE/NEOPRENE VIBRATION ISOLATOR HANGER



1 BASEMENT REFLECTED CEILING PLAN
A1.6 1/8" = 1'-0"

T:\00_TFH_Polychloro2_ChestnutStreetConstruction\Documents\01-Fiber Plans\0422 - 00 Basement Floor Plan.dwg, 2/23/2006 2:07:26 PM, HP DesignJet 750C Plus (E_A0).p3