

PLAN

B1 REFLECTED CEILING PLAN
1/8"=1'-0"




REFLECTED CEILING LEGEND

MANUFACTURER	STYLE	NOTES
COOPER	METALUX RDI SERIES	DIRECT/INDIRECT-ENERGY EFFICIENT T5
FOCAL POINT	LUNA	DIRECT/INDIRECT-ENERGY EFFICIENT T5
MATCH OWNER STANDARD	-	-
MATCH BUILDING STANDARD	MATCH BUILDING STANDARD	-

CEILING NOTES

- BE COORDINATED WITH MEP ENGINEERING DRAWINGS.
- CEILING HEIGHTS TO MATCH EXISTING A.F.F.
- BUILD CONTRACTOR TO PROVIDE NEW LIFE/SAFETY DEVICES WHERE NECESSARY.
- BUILD CONTRACTOR TO VERIFY EXISTING LIFE/SAFETY DEVICES AND PROVIDE NEW WHERE SHOWN ON EXISTING IN PROXIMITY.
- BUILD CONTRACTOR TO PROVIDE EMERGENCY LIGHTS AS REQUIRED BY CODE.

REFLECTED CEILING LEGEND

- A**  2x2 RECESSED LIGHT FIXTURE
- B**  OWNER STANDARD DOWN LIGHT
- C**  CEILING MOUNTED EXIT SIGN

A2 LIGHT FIXTURE SCHEDULE

A1 REFLECTED CEILING LEGEND

NORMAN H

415

TITLE
**RCP & FURNITURE
PLANS/LEGENDS
WALL TYPES**

OWNER

SCALE
AS NOTED



Cubellis Associates Inc.
Architecture Interiors Engineering
428 Fore Street, 3rd Fr.
Portland, ME 04101
Tel: 207-874-2777
Fax: 207-874-2775
www.cubellis.com

DATE
5/24/06

DRAWN BY
jat

CHECKED BY

A401

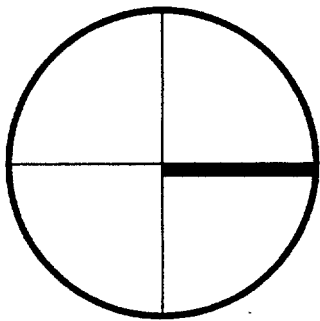
060563

LICENSED CERTIFIED INTERIOR DESIGNER

JULIE A. TUPPER
CID2913

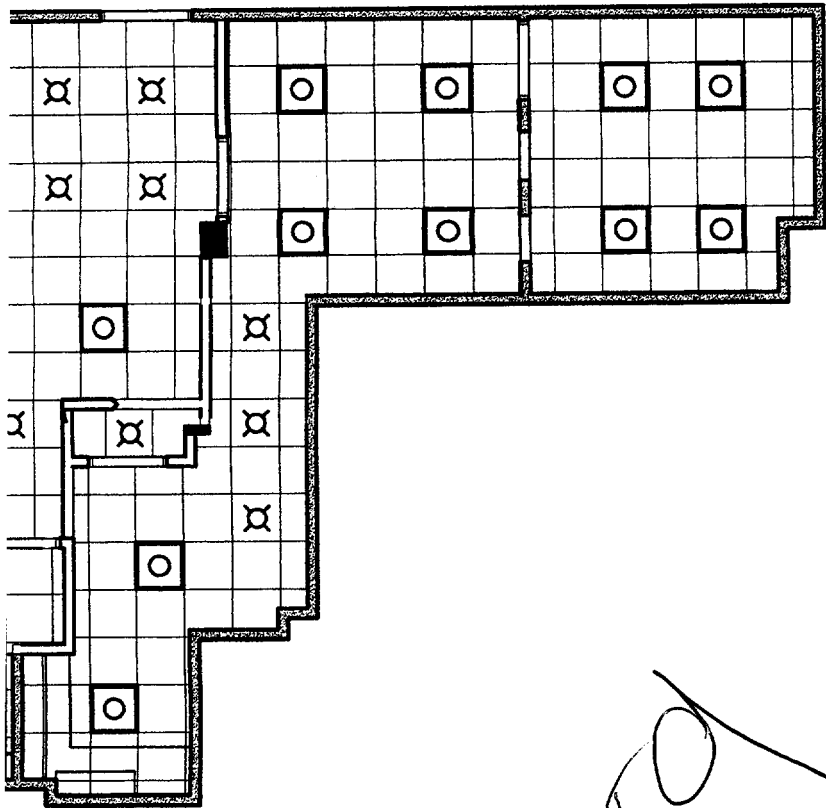
NO	DATE	REVISIONS

PROJECT NORTH



& DETROY

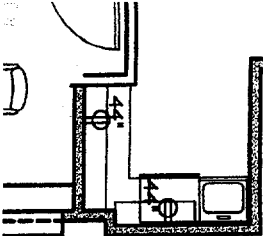
FEET



370
Floor

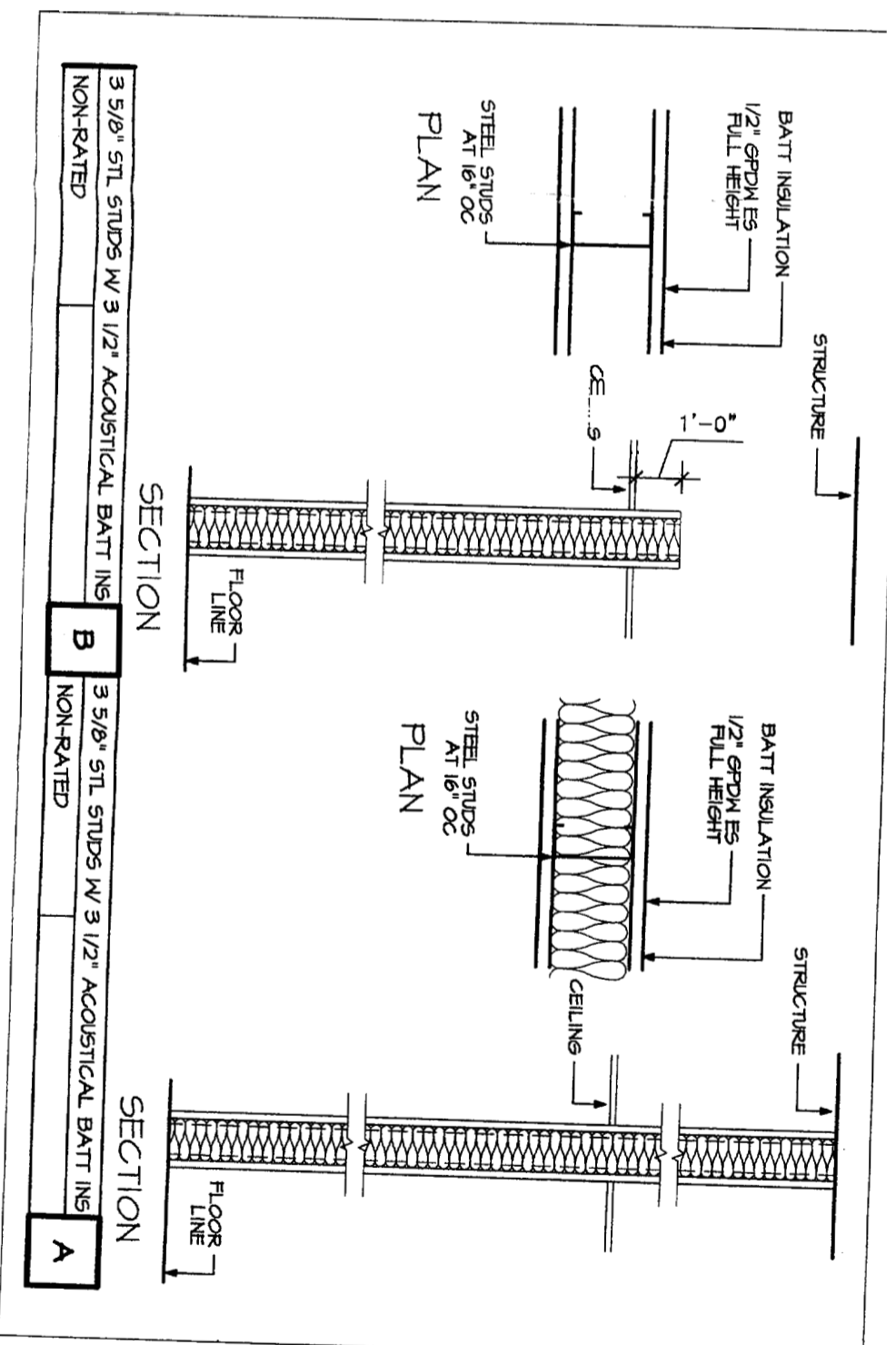
EQUIP/KIT.

305



Dem'd

A1 FUR
1/8"=1'



3 5/8" STL STUDS W/ 3 1/2" ACOUSTICAL BATT INS
NON-RATED

3 5/8" STL STUDS W/ 3 1/2" ACOUSTICAL BATT INS
NON-RATED

NO.	MATERIAL
A	2X2
ALT.	2X2
B	DOWN LG
C	EXIT SIGN

REFLECT

THIS PLA
INFORMAT
NEW SPR
PANELS /
ALL SUSF
ELECTRIC/
ELECTRIC/
PLAN IF I
ELECTRIC/

LIGHT F

A3 PARTITION TYPES
NA

