

PLANNING BOARD
SUBMISSION
01/08/16

Structural Engineer
Strucutral Integrity
Consulting Engineers, Inc.

Mechanical / Electrical
Engineer
Bennett Engineering

Owner
JJR 443 Congress, LLC

443 Congress

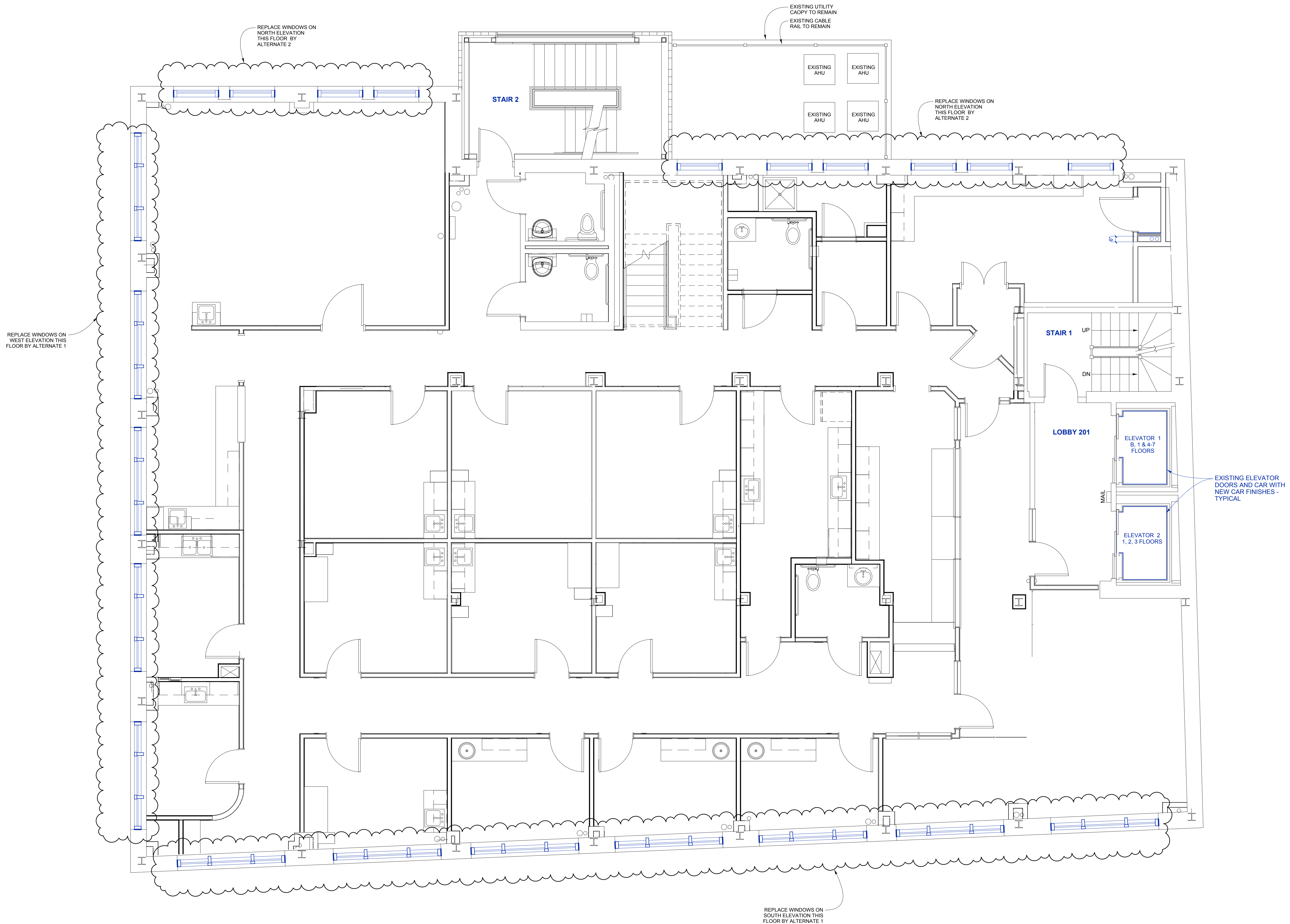
Portland, Maine

Second Floor
Proposed Plan

1/4" = 1'-0"

A 1.2

January 08, 2016



REPLACE WINDOWS ON SOUTH ELEVATION THIS FLOOR BY ALTERNATE 1

REPLACE WINDOWS ON WEST ELEVATION THIS FLOOR BY ALTERNATE 1

REPLACE WINDOWS ON NORTH ELEVATION THIS FLOOR BY ALTERNATE 2

REPLACE WINDOWS ON NORTH ELEVATION THIS FLOOR BY ALTERNATE 2

EXISTING UTILITY CADDY TO REMAIN
EXISTING CABLE RAIL TO REMAIN

EXISTING AHU
EXISTING AHU
EXISTING AHU
EXISTING AHU

STAIR 2

STAIR 1
UP
DN

LOBBY 201

ELEVATOR 1
B, 1 & 4-7
FLOORS

ELEVATOR 2
1, 2, 3
FLOORS

EXISTING ELEVATOR DOORS AND CAR WITH NEW CAR FINISHES - TYPICAL