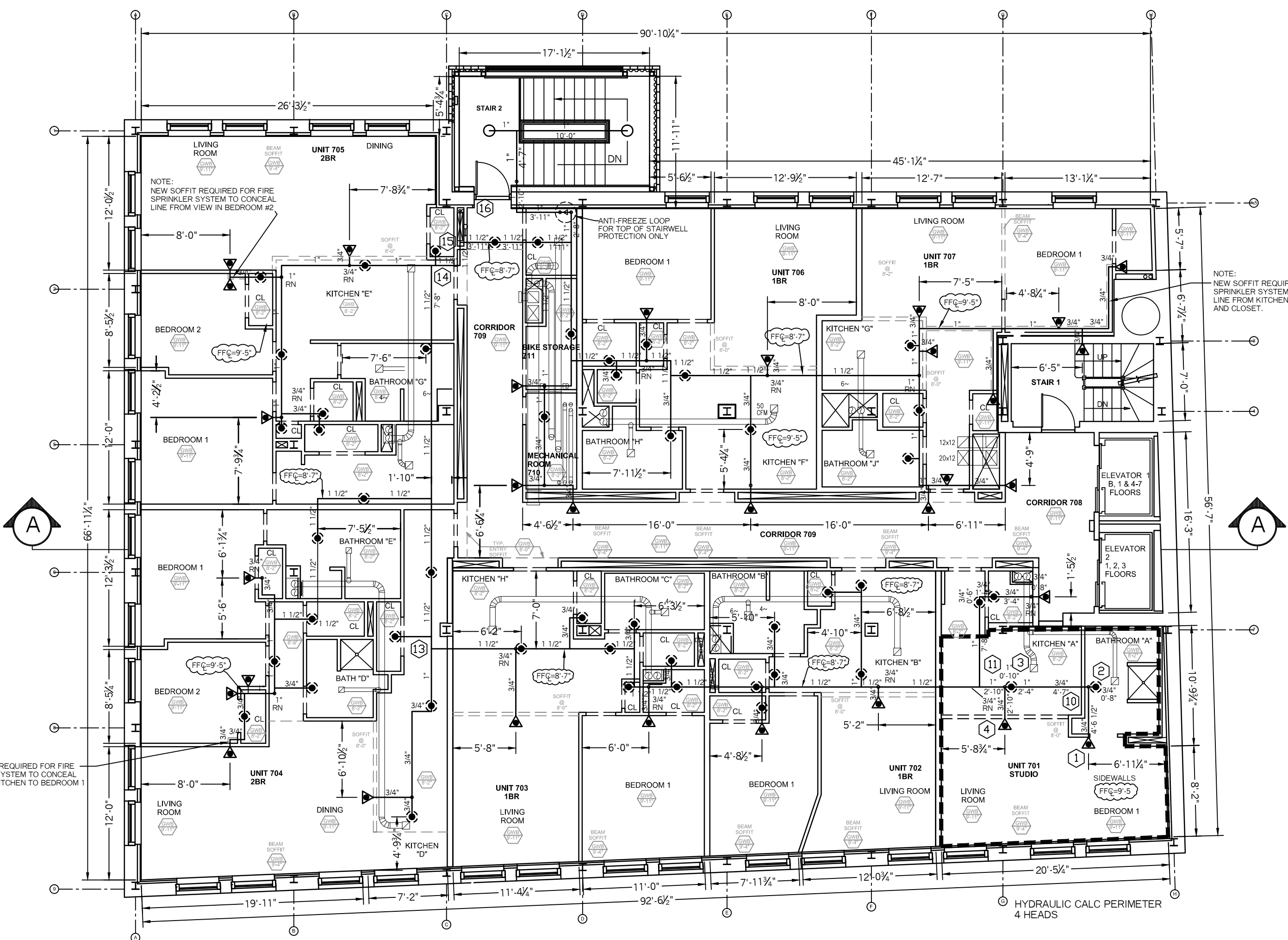


HYDRAULIC CALCULATION INFORMATION			
LOCATION: RESIDENTIAL PENDENTS			
BASIS OF DESIGN: NFPA 13R, 2016 EDITION			
DENSITY	AREA OF COVERAGE		
.0508	4 HEADS		
OCCUPANCY: RESIDENTIAL APARTMENT			
SPRINKLERS:	TOTAL	THRD	ORIFICE TEMP
	4	1/2"	7/16" 155
SYSTEM DEMAND AT BASE OF RISER (BOR):			
PRESSURE	FLOW	HOSE	
73.95 PSI	108.91 GPM	100	
SAFETY MARGIN: 6.28 PSI			

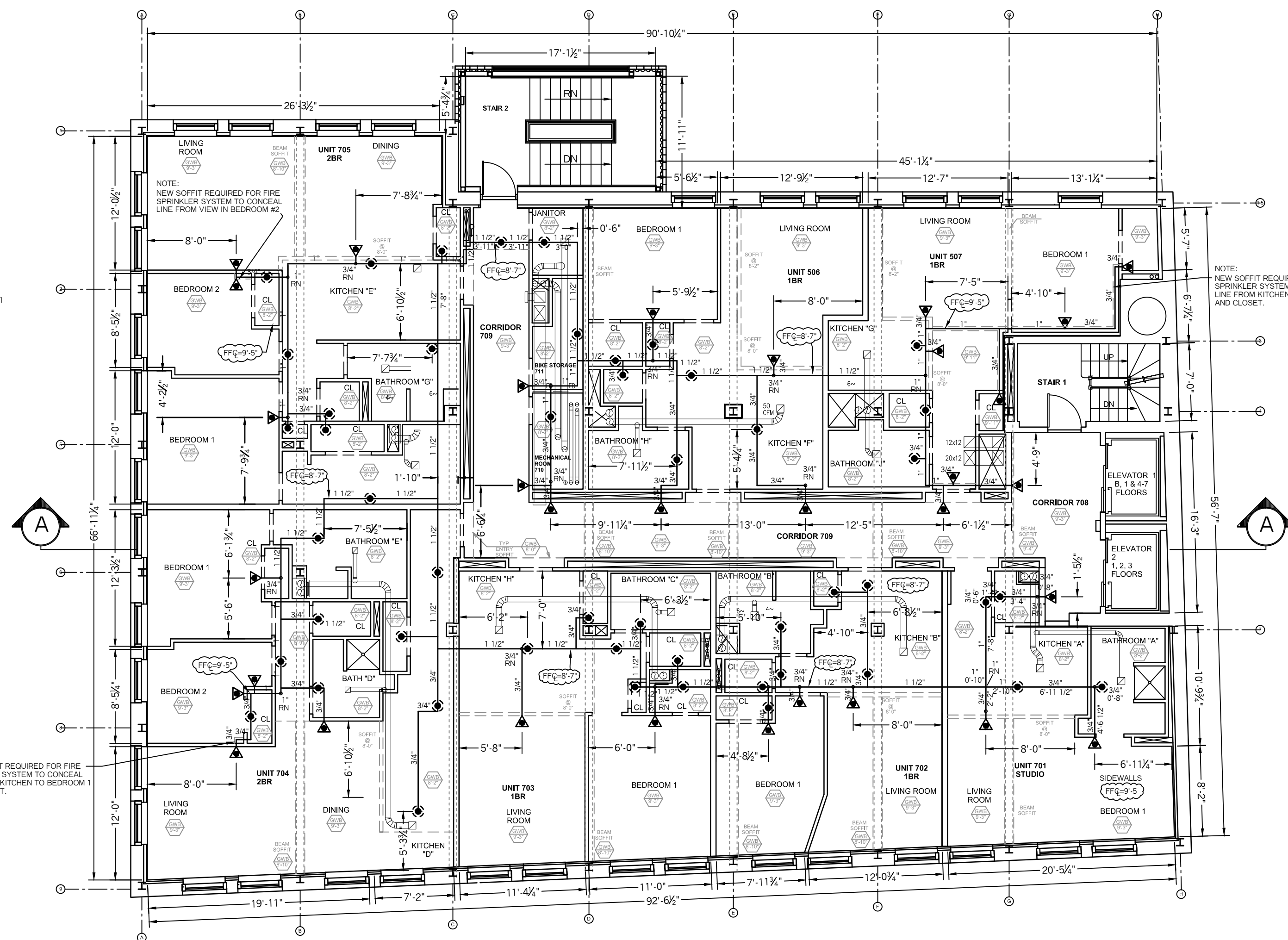


7TH LEVEL PLAN
SCALE: 1/8" = 1'-0"
FLR ELEV: 68.0'
TOTAL FLR AREA= 5,779 SF

SPRINKLER HEAD INFORMATION, FOR THIS FLOOR ONLY

QTY	SIZE	ORIFICE	K-FACTOR	DESCRIPTION	MODEL	TEMP	ESCUTCHEON	SYMBOL
49	1/2"	7/16"	4.9	VIKING WHITE RES. PENDENT	VK468	155	RECESSED	◼
33	1/2"	7/16"	4.0	VIKING RES. WHITE PENDENT	VK486	155	RECESSED	◼
2	1/2"	1/2"	5.6	VIKING BRASS "DR" UPRIGHT	VK300	155	NONE	○

TOTAL SPRINKLERS=84

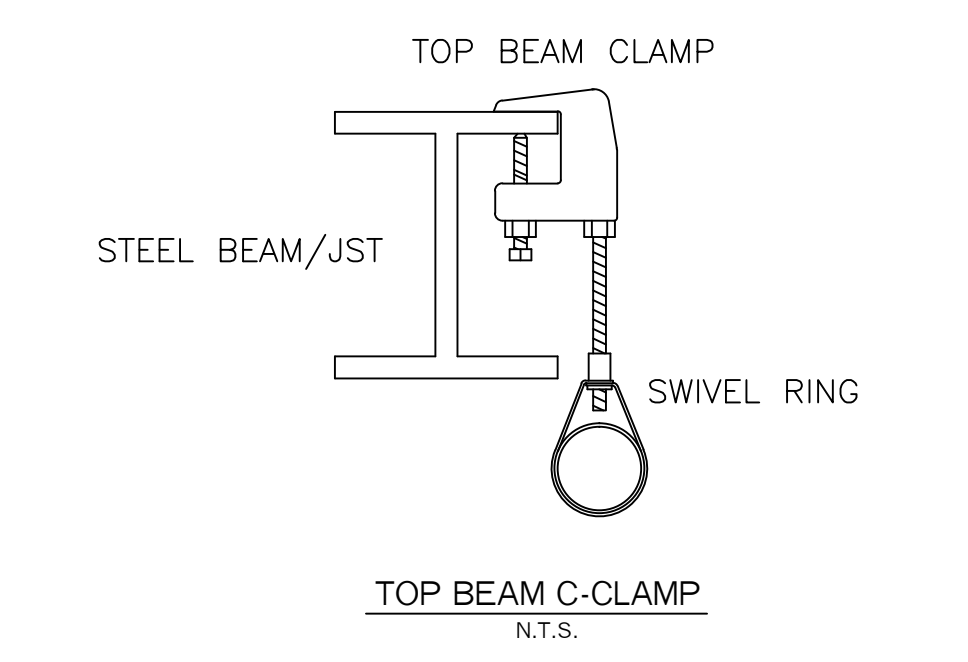
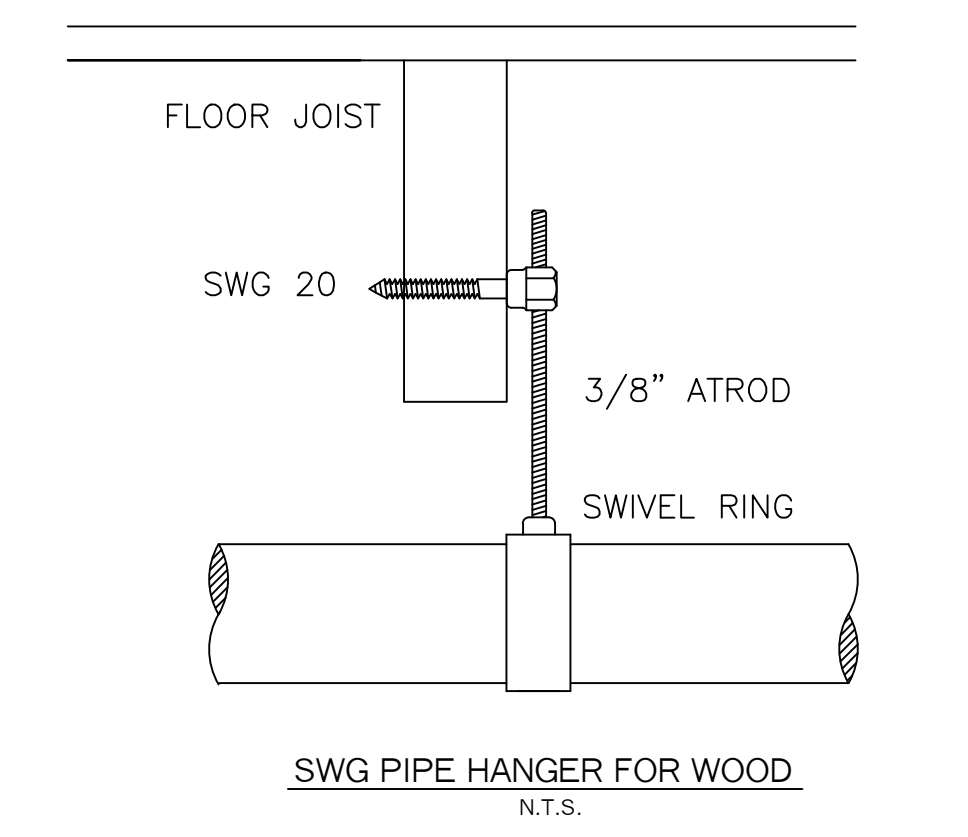
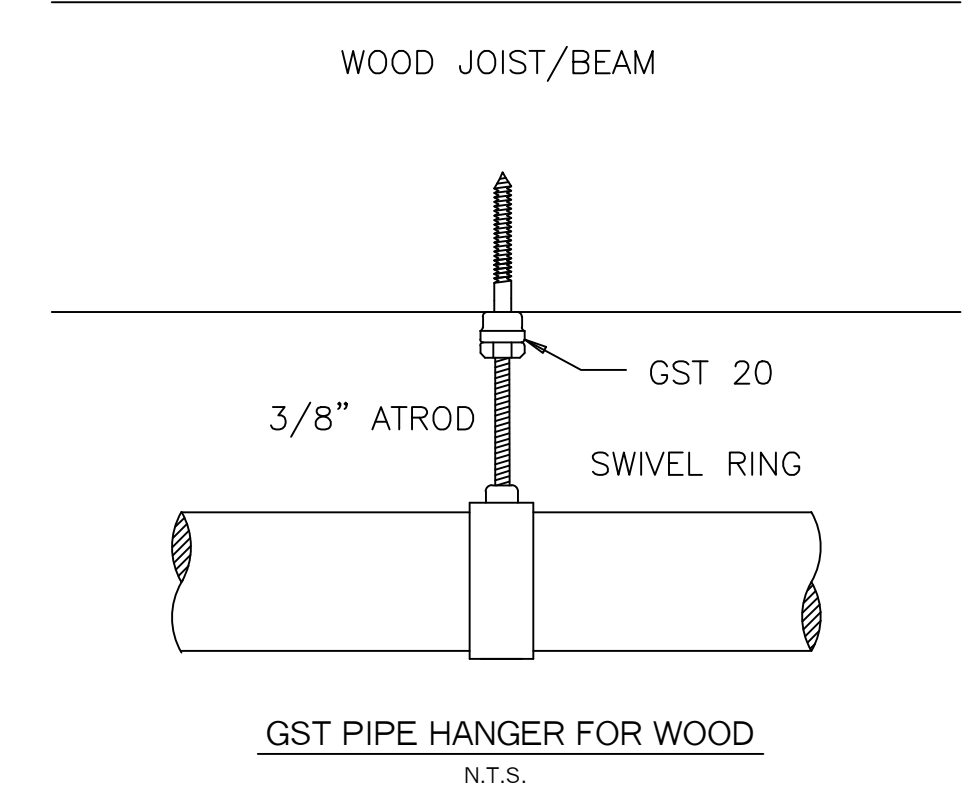


5TH LEVEL PLAN
SCALE: 1/8" = 1'-0"
FLR ELEV: 47.0'
TOTAL FLR AREA= 5,548 SF

SPRINKLER HEAD INFORMATION, FOR THIS FLOOR ONLY

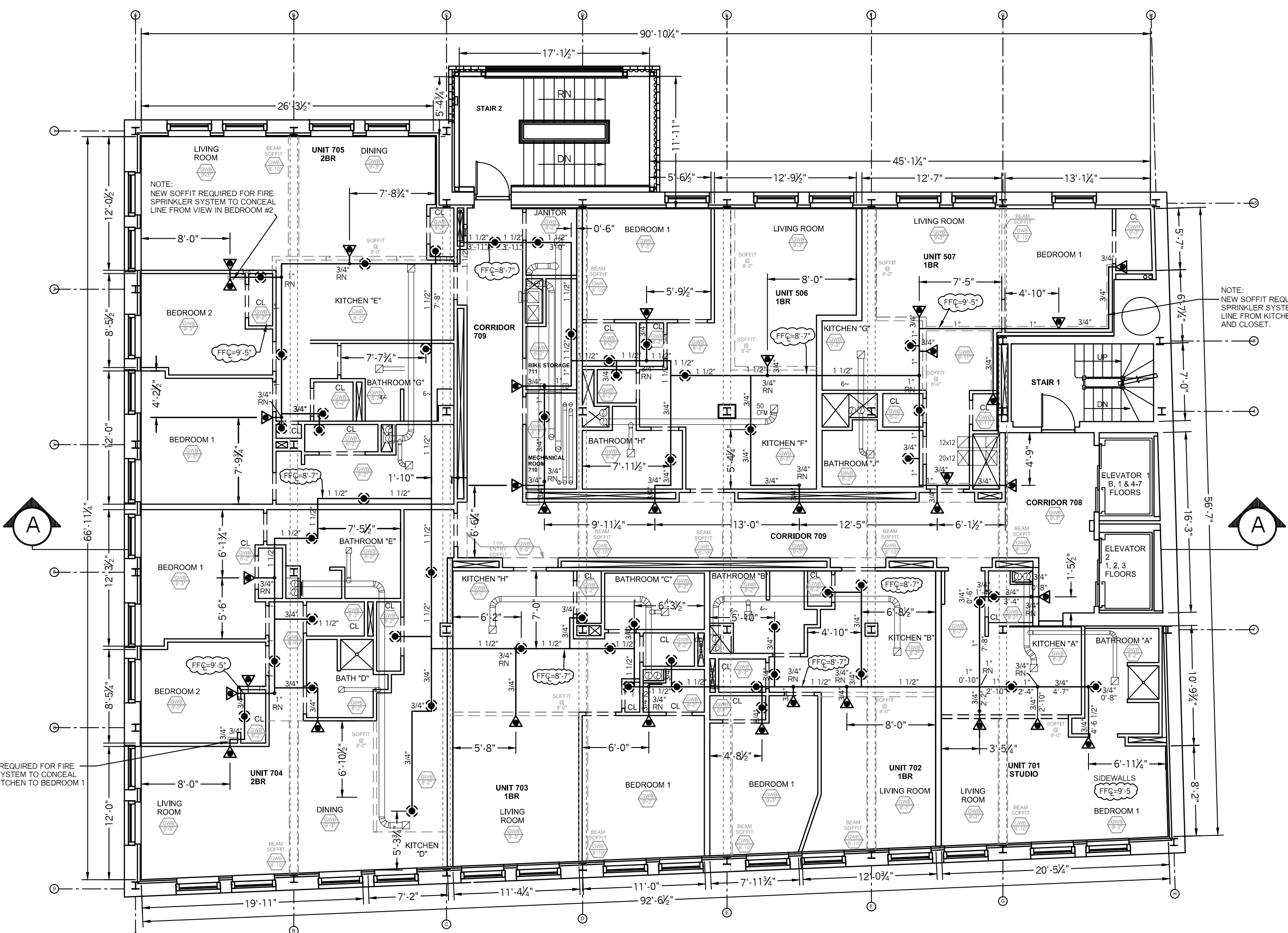
QTY	SIZE	ORIFICE	K-FACTOR	DESCRIPTION	MODEL	TEMP	ESCUTCHEON	SYMBOL
49	1/2"	7/16"	4.9	VIKING WHITE RES. PENDENT	VK468	155	RECESSED	◼
34	1/2"	7/16"	4.0	VIKING RES. WHITE PENDENT	VK486	155	RECESSED	◼

TOTAL SPRINKLERS=83



HANGER DETAILS
N.T.S.

- SYSTEM SYMBOL LEGEND:**
- ▶ = WET SHOT-GUN RISER
 - ① = HYDRAULIC CALC REF PT
 - ◻ = DRAIN VALVE
 - N.I.C. = NOT IN CONTRACT
 - LPD = LOW POINT DRAIN
 - N.O. = NORMALLY OPEN
 - N.C. = NORMALLY CLOSED
 - ◻ = ZONE ASSEMBLY LOCATION SYMBOL
 - ▶ = PLUG

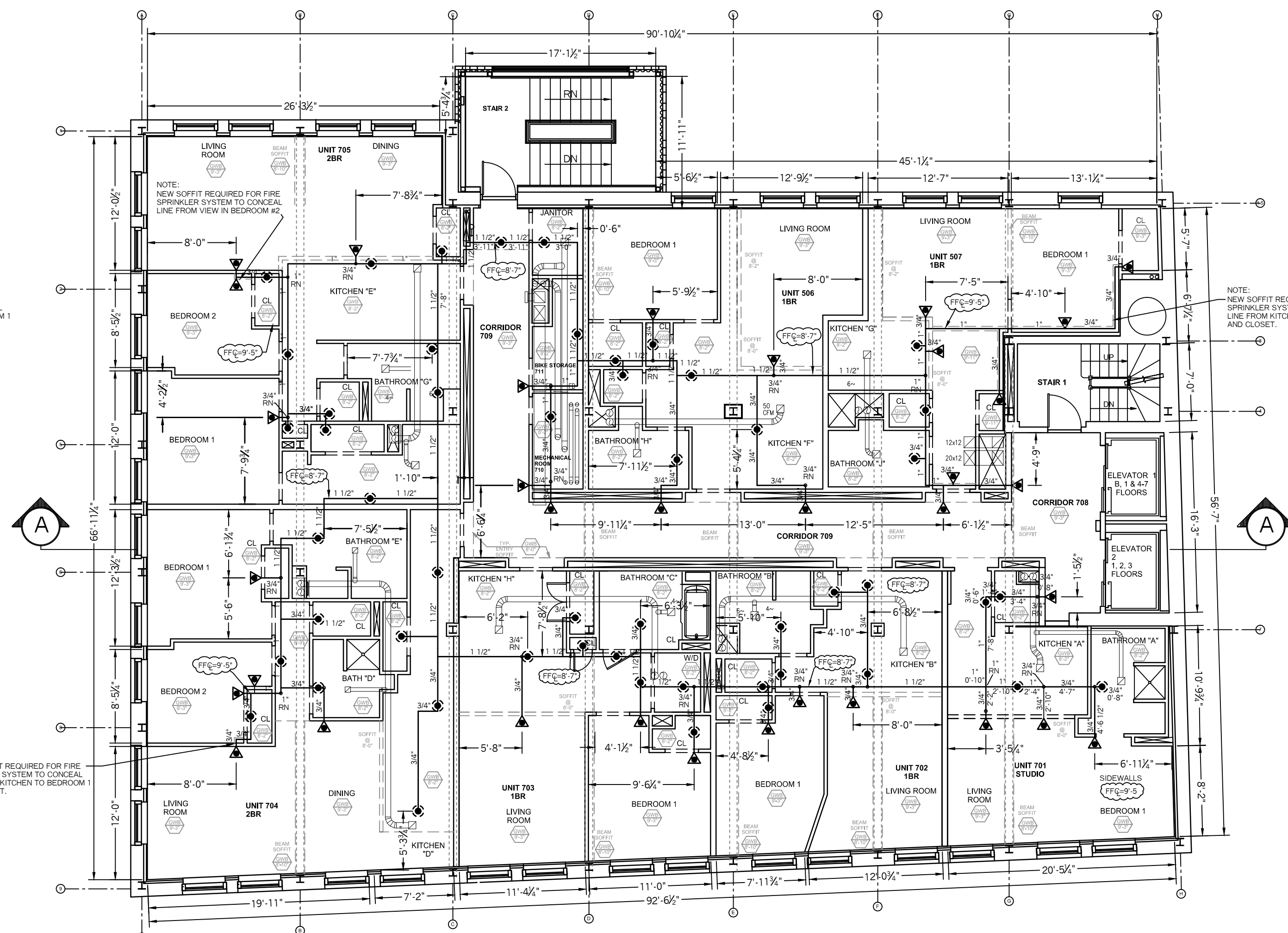


6TH LEVEL PLAN
SCALE: 1/8" = 1'-0"
FLR ELEV: 57.5'
TOTAL FLR AREA= 5,548 SF

SPRINKLER HEAD INFORMATION, FOR THIS FLOOR ONLY

QTY	SIZE	ORIFICE	K-FACTOR	DESCRIPTION	MODEL	TEMP	ESCUTCHEON	SYMBOL
49	1/2"	7/16"	4.9	VIKING WHITE RES. PENDENT	VK468	155	RECESSED	◼
34	1/2"	7/16"	4.0	VIKING RES. WHITE PENDENT	VK486	155	RECESSED	◼

TOTAL SPRINKLERS=83



4TH LEVEL PLAN
SCALE: 1/8" = 1'-0"
FLR ELEV: 36.5'
TOTAL FLR AREA= 5,548 SF

SPRINKLER HEAD INFORMATION, FOR THIS FLOOR ONLY

QTY	SIZE	ORIFICE	K-FACTOR	DESCRIPTION	MODEL	TEMP	ESCUTCHEON	SYMBOL
49	1/2"	7/16"	4.9	VIKING WHITE RES. PENDENT	VK468	155	RECESSED	◼
34	1/2"	7/16"	4.0	VIKING RES. WHITE PENDENT	VK486	155	RECESSED	◼

TOTAL SPRINKLERS=83

443 CONGRESS STREET BLDG (4TH, 5TH, 6TH & 7TH APARTMENT FIT-UP) CONGRESS STREET PORTLAND, ME. 04101	FIRE SPRINKLER PLANS AND DETAILS REQUIRED APPROVALS: STATE FIRE MARSHALS OFFICE LOCAL FIRE DEPARTMENT OWNER	RESIDENTIAL FIRE PROTECTION, LLC DATE: 5/8/2017
	CONTRACT WITH: NORTHLAND MANAGEMENT CORP. C/O NORTHLAND ENTERPRISES 17 SOUTH STREET, 3RD FLOOR PORTLAND, ME. 04101 PH: (207) 797-6066	DRAWN BY: TYP NICET III CERTIFICATION # 100854 CHECKED BY: SJC NICET III (10854) CERTIFICATION # 78065 CONTRACTOR LICENSE #511 CONTRACTOR RMS #80
RESIDENTIAL FIRE PROTECTION 64 DAGGETT HILL ROAD, GREENE, MAINE 04236 PH: (207) 946-3473 FAX: (207) 946-3474		