

Renovation / Demolition Impact Survey

Prepared For:

Alan Nichols, Principal
Development Services of New England
17 Chestnut Street, Suite 18
Portland, Maine 04101

At:

*443 Congress St
Portland Maine*

From:

Bruce M. Hackett
Indoor Air Quality Manager
ABATEMENT PROFESSIONALS
590 County Road
Westbrook, Maine
04092

(207) 773-1276

1.0 INTRODUCTION

Abatement Professionals were retained to conduct an asbestos renovation/demolition survey at the 443 Congress Street, Portland Maine facility.

The objective of this survey was to locate and identify accessible Asbestos Containing Materials (ACM), polychlorinated biphenyls (PCBs), and mercury containing materials within this facility that will be impacted during any upcoming facility renovation/demolition.

The field survey was conducted by Bruce Hackett, a licensed asbestos inspector in the State of Maine (AI-0325). During the survey we identified suspect interior and exterior Asbestos Containing Building Materials (ACBM), Exterior was limited to the original window caulking/glazing, which will be impacted by the upcoming facility demolition project. A total of 156 individual bulk samples were collected for analysis during the field survey.

All sampling was conducted in accordance with Maine Department of Environmental Protection (MEDEP) Asbestos Management Regulation Chapter 425, National Emission Standard for Hazardous Air Pollutants (NESHAPS), United States Environmental Protection Agency (US EPA) and the Occupational Safety and Health Administration (OSHA).

The locations and quantities of these materials were recorded. Following completion of the field survey the bulk samples were submitted to EMSL Analytical laboratory for analysis.



The method used to analyze the bulk samples collected during this survey were the AHERA protocols set forth by State Regulations "Maine Chapter 425 Asbestos Management Regulations" of polarized light microscopy (PLM) with dispersion staining. Samples were analyzed by EMSL laboratory which is certified to perform asbestos sample analysis by both the American Industrial Hygiene Association (AIHA) and the National Voluntary Laboratory Accreditation Program (NVLAP). Analytical results are presented in percentage and type of asbestos content and utilized the "positive stop" option. This means the sample sets are analyzed until a "positive" result is received, no further samples in that set needs to be analyzed.

Universal waste

PCB-CONTAINING BALLASTS

The primary concern regarding the disposal of used fluorescent ballasts is the health risk associated with polychlorinated biphenyls (PCBs). Human exposure to these possible carcinogens can cause skin, liver, and reproductive disorders. Fluorescent and high-intensity discharge (HID) ballasts contain a small capacitor that may contain high concentrations of PCBs (greater than 90% pure PCBs or 900,000 ppm). These chemical compounds were widely used as insulators in electrical equipment such as capacitors, switches, and voltage regulators through the late 1970s.

The Toxic Substances Control Act (TSCA) was enacted in 1976, and subsequently banned the production of PCBs in the United States. The specific regulations governing the use and disposal of PCBs are found in Volume 40 Code of Federal Regulations (CFR) Part 761.

The proper method for disposing used ballasts depends on several factors, such as the type and condition of the ballasts and the regulations or recommendations in effect in the state(s) where you remove or discard them. TSCA specifies the disposal method for ballasts that are leaking PCBs. In addition, generators of PCB-containing ballast wastes may be subject to notification and liability provisions under the Comprehensive Environmental Response, Compensation and Liability Act of 1980 (CERCLA) (also known as "Superfund." To select the appropriate disposal method for PCB-containing ballasts, refer to the decision flow chart on the following page.

Identifying PCB Ballasts

- Use the following guidelines to identify ballasts that contain PCBs.
- All ballasts manufactured through 1979 contain PCBs.
- Ballasts manufactured after 1979 that do not contain PCBs are labeled "No PCBs."
- If a ballast is not labeled "No PCBs," assume it contains PCBs.
- It is extremely important to find out if a ballast containing PCBs is leaking before you remove it from the fixture, so that you can handle it properly.

Federal Requirements

Non-Leaking PCB Ballast Disposal

TSCA regulates ballasts that contain PCBs (40 CFR 761.60(b)(2)(ii)). Under TSCA, intact fluorescent and HID ballasts that are not leaking PCBs may be disposed in a municipal solid waste landfill. EPA recommends packing and sealing the intact ballasts in 55 gallon drums. Green Lights also encourages its participants to dispose of PCB-containing ballast wastes responsibly, and recommends high-temperature incineration, recycling, or a chemical or hazardous waste landfill.

In addition, CERCLA regulates the disposal of non-leaking PCB-containing ballasts. CERCLA requires building owners and waste generators to notify the National Response Center at (800) 424-8802. They must notify when disposing a pound or more of PCBs (roughly equivalent to 12-16 fluorescent ballasts) in a 24-hour period.

As a generator of PCB-containing ballast wastes, you could be liable in any subsequent Superfund cleanup at a municipal, hazardous, or chemical land disposal site, incinerator, or recycling facility.

EPA encouraged proper disposal of PCB-containing ballasts in the preamble to the 1979 PCB Ban Rule (44 FR 31514) and in the preamble to the final rule on August 25, 1982 (47 FR 37342).

"The EPA encourages commercial and industrial firms that use and dispose of large quantities of small PCB capacitors to establish voluntarily a collection and disposal program that would result in the waste capacitors going to chemical or hazardous waste landfills or high-temperature incinerators."

Leaking PCB Ballast Disposal

A puncture or other damage to ballasts in a lighting system exposes an oily tar-like substance. If this substance contains PCBs, the ballast and all materials it contacts are considered PCB waste, and are subject to TSCA requirements. Leaking PCB-containing ballasts must be incinerated at an EPA-approved high-temperature incinerator. (See last section for a list of incinerators).

It is very important that you remove, handle, and dispose PCB-containing ballasts properly. Take precautions to prevent exposure of the leaking ballast, since all materials that contact the ballast or the leaking substance are also PCB waste. Use trained personnel or contractors to handle and dispose leaking PCB-containing ballasts.

Ballasts manufactured between 1979 and 1991 may contain DEHP a temporary substitute for PCB's. *DEHP in its raw form is a listed hazardous waste under RCRA, but once it has been used in a light fixture, it is no longer considered hazardous (ref. 40 CFR 261.33).*

DEHP is known to cause short-term and long-term health affects in humans. Short-term health affects include mild gastrointestinal disturbances, nausea, and vertigo. Long-term health affects include damage to liver and testes, reproductive effects, and cancer.

The DEHP content in lighting ballast can be determined by contacting the manufacturer or through sampling and laboratory analysis. If chemical content data is not available and the ballast was manufactured between 1979 and 1991, it is a good practice to treat the ballast as if it contains DEHP.

According to RCRA regulations (hazardous waste rules) in [40 CFR Part 261](#) DEHP, in its raw form, is considered a hazardous waste, classified as a U028 characteristic hazardous waste.

The DEHP in lighting ballast that has been used is spent, and therefore no longer considered a hazardous waste (40 CFR 261.33). Used ballasts containing DEHP destined for disposal can be recycled (which is preferred), landfilled, or incinerated.

Mercury-containing lamps

Fluorescent and high-intensity discharge (HID) lamps contain a small quantity of mercury that can be harmful to the environment and to human health when improperly managed. Mercury is regulated under RCRA, which is administered by the US Environmental Protection Agency. Under current Federal law, mercury-containing lamps such as fluorescent and HID lamps may be

hazardous waste. In addition, incandescent and HID lamps may contain small quantities of lead that can also be potentially harmful to human health and the environment. To prevent these toxic materials from contaminating the environment, dispose of used lamps responsibly.

Federal Regulations

Resource Conservation and Recovery Act (RCRA)

RCRA requires generators of solid wastes containing toxic constituents (such as mercury) to determine whether or not the waste is hazardous by using generator knowledge or testing representative samples of that waste. According to RCRA, generators of used fluorescent and HID lamps are responsible for determining whether their lamp wastes are hazardous. *If you do not test used fluorescent and HID lamps and prove them non-hazardous, assume they are hazardous waste and dispose them accordingly.*

Comprehensive Environmental Response, Compensation, and Liability Act (CERCLA)

CERCLA also regulates the disposal of mercury-containing lamps. The law requires building owners and waste generators to notify the National Response Center at (800) 424-8802 under certain conditions. For example, they must notify if they dispose of a pound or more of mercury (roughly equivalent to 11,000 four-foot T12 fluorescent lamps) in a 24-hour period. All generators of mercury-containing lamp waste (large, small, and conditionally exempt small generators) could be held liable in any subsequent Superfund cleanup at a land disposal site, incinerator, storage site, or recycling or other treatment facility.

2.0 SURVEY LIMITATIONS

As with any scientific study, a facility asbestos survey is subject to a variety of limitations. Limitations that should be considered in the interpretation of the results of this survey include the following:

- A. Asbestos surveys may not be able to identify all ACM present throughout a facility. A thorough study should be capable of identifying approximately 95 percent of accessible (non-and destructive sampling methods) ACM present.
- B. The survey, sampling, and analytical protocols used for this project are presented in this report.
- C. As with any assessment there may be the presence of hidden and/or inaccessible materials (pipe chases in wall cavities, above ceilings, inside boilers without dismantling, etc.) that could not be sampled during our assessment, should this material be encountered during the demolition the project should be halted and our office, or a licensed Asbestos inspector, should be consulted prior to continuing the demolition.

3.0 OBSERVATIONS & FINDINGS

The Inspection consisted of the 443 Congress St. facility, which consists of multiple floors and functional spaces within with typical interior finishes. During the evaluation we identified suspect ACM which potentially will be impacted by the planned demolition project, determined quantities of suspected ACM and collected bulk samples of suspect ACM in accordance with Maine Department of Environmental Protection (DEP) regulations 06-096, Chapter 425. Suspect materials identified and sampled during this field survey included;

- Multiple Vinyl Sheet Flooring Products
- Multiple Vinyl Tile Systems
- Plaster Wall, Ceiling Systems
- Textured Ceiling Tiles
- Non-Textured Ceiling Tiles
- Floor Tile Adhesives
- Window Caulking and/or glazing
- Heating System Thermal System Insulation
- Associated Mudded Elbows
- Ceiling Tile Adhesives

The below materials have asbestos content greater than one percent (>1.0%). These materials are **asbestos containing building materials (ACBM)**, all Federal and State Asbestos Management Regulations are in effect when impacting this material.

Table 1 – Asbestos Containing Material Summary

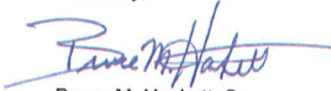
Material	Location	Approximate Quantity
B1 White Painted 9"x9" Floor Tile	1 st Floor Scattered throughout Left side of the Area	1,485 SF
B4 12"x12" Floor Tile Adhesive	1 st Floor Entry Way, Hallways, and Office	1,006 SF
B7 Bottom Layer Tile/Mastic	1 st Back Right Kitchen	474 SF
B9 12"x12" Floor Tile, 2 nd Layer	1 st Floor Back Left Hallway, Entry, Bathrooms	159 SF
B10 Underlying Adhesive	Same As Above	159 SF
B20 Tile Adhesive	1 st Floor Vault	80 SF
B21 12"x12" Floor Tile	1 st Floor Vault	80 SF
B24 Linoleum	2 nd Floor Back Right Corner Hall, Entry, Bathrooms	80 SF
B27 9"x9" Floor Tile	2 nd Floor Majority of area	3,790 SF
B29 9"x9" Floor Tile	2 nd Floor Hallway & Mechanical Room	54 SF
B31 12"x12" Floor Tile	3 rd Floor, Kitchen Area	275 SF
B33 9"x9" Floor Tile	3 rd Floor, Right Front Corner and next room, Mechanical Room	659 SF
B46 9"x9" Floor Tile	4 th Floor, Mechanical Room	54 SF
B36 12"x12" Floor Tile	5 th Floor, Back Section Kitchenette	54 SF
B41 9"x9" Floor Tile	Basement, Gray Painted Hallway	99 SF
B43 Pipe Insulation, Fittings, Elbows	Basement, Behind Walls in Kitchen & Mechanical Room	20 LF
B44 9"x9" Floor Tile	Basement, Front Left Side half of basement area	1,605 SF

Universal Waste – An assessment was conducted and an inventory was made of items that are assumed as being universal waste and the following was identified;

Fluorescent Light Tubes:	Approximately 2,676 Linear Feet
Fluorescent “U” Shaped:	Approximately 588 ea.
Mercury Switches:	Approximately 20 ea.
Ballasts:	Approximately 575 ea.

This completes the assessment. Abatement Professionals Corp. appreciates the opportunity to assist you with your asbestos needs. Should there be any questions and/or concerns feel free to contact us at 773-1276.

Sincerely,



Bruce M. Hackett, Sr.
Industrial Hygienist
Indoor Air Quality Manager

DEFINITIONS & REGULATIONS

ABATEMENT: A range of procedures to control release of fibers from ACM. Abatement options include removal, repair and encapsulation, enclosure, or operations and maintenance (O&M) activities.

ABRADE: "Abrade" means to wear away or rub off by friction.

ACCESSIBLE: In regards to ACM this means that the material is subject to disturbance by building occupants including custodial or maintenance personnel in the course of their normal activities.

ACCREDITED: When referring to a person or a laboratory, this means that such person or laboratory is accredited in accordance with Section 206 of Title II of the Toxic Substances Control Act. Accreditation is given to laboratories which analyze bulk material samples for asbestos and satisfy the proficiency requirements established by the National Institute for Science and Testing (NIST)

ASBESTOS: The term asbestos includes actinolite, amosite, anthophyllite, chrysotile, crocidolite, tremolite, including any of these minerals which has been chemically treated and/or altered. Equal to or Greater than 1% in content per Maine Chapter 425. OSHA greater than 1%.

ASBESTOS CONTAINING MATERIAL (ACM): Material composed of any type and in an amount greater than 1 percent by weight, either alone or mixed with any fibrous or non-fibrous materials (i.e., surfacing, thermal system insulation and miscellaneous material).

ASBESTOS ABATEMENT ACTIVITY: For purposes of this rule, "asbestos abatement activity" means any activity involving the removal, demolition, enclosure, repair, encapsulation, or handling of asbestos-containing materials in an amount greater than 3 square feet or 3 linear feet. "Asbestos abatement activity" includes associated activities such as design, monitoring, analysis, and inspection of asbestos-containing materials in an amount greater than 3 square feet or 3 linear feet, and conducting training for persons seeking a state certificate or license.

ASBESTOS-CONTAINING CEMENTITIOUS PRODUCT: "Asbestos-containing cementitious product" means any pre-formed material or product manufactured with asbestos mixed into cement. Commonly referred to as transite, it includes piping, board, and siding.

ASBESTOS INSPECTOR: "Asbestos inspector" means a Department-certified individual whose activities include, but are not limited to, collecting bulk samples and assessing the potential for exposure associated with the presence of ACM.

FRIABLE ASBESTOS MATERIAL: Any material that contains more than one percent asbestos by weight that can be crumbled, pulverized, or reduced to a powder by hand pressure when dry.

HOMOGENOUS AREA: "Homogenous area" means a discrete portion of surfacing material, thermal system insulation, or miscellaneous ACM that is uniform in color, texture, and composition.

INSPECTION: "Inspection" means the process of visually identifying the locations, collecting bulk samples, and assessing the condition of ACM present in or around a facility. This process includes sampling and assessing suspected ACM and creating records documenting the same. Inspection includes conducting a comprehensive building survey by a certified asbestos inspector prior to renovation and/or demolition activities to determine the presence of any asbestos-containing materials that may be impacted by the renovation and/or demolition project.

NON-FRIABLE ASBESTOS MATERIAL: Material that contains greater than 1 percent asbestos by weight such that the fibers have been locked in by a bonding agent, coating, binder, or other material so that the asbestos will not release fibers in excess of the asbestos control limit during any reasonably appropriate use, handling storage, transportation, or processing.

REMOVAL: The complete removal of ACM from a damaged area, a functional space, or a homogeneous area in a building.

REPAIR: Returning damaged ACM to an undamaged condition so as to prevent fiber release.

ROUTINE MAINTENANCE AREA: An area, such as a boiler room or mechanical room that is not normally occupied by non-maintenance individuals and in which maintenance employees or contracted workers regularly conduct maintenance activities.

SURFACING ACM: Surfacing asbestos containing material such as spray or trowel applied fireproofing.

SURFACING MATERIAL: Material that is sprayed on, troweled on, or otherwise applied to surfaces. Examples include acoustical plaster on ceilings and fireproofing materials on structural members.

THERMAL SYSTEM INSULATION: Material in a building applied to pipes, fittings, boilers, breeching, tanks, ducts, or other components to improve the thermal characteristics of the component by preventing heat loss or gain, or to prevent water condensation.

VISIBLE ASBESTOS CONTAINING MATERIAL: Any quantity of ACM which is visible to the unaided eye, including dust and other types of debris.

REGULATORY OVERVIEW

Over the past two decades, the regulatory community has become increasingly aware of the potential hazards of inhaled asbestos fibers. Regulations have been developed by federal, state, and local agencies to protect workers and the general public from released asbestos fibers. Departments of the federal government responsible for the regulation of asbestos include:

The U.S. Department of Labor (DOLL) through the Occupational Safety and Health Administration (OSHA) has developed two standards designed to protect employees at their worksites. These two standards are the Asbestos Regulations for General Industry (29 CFR 1910.1001) and Asbestos Regulations for the Construction Industry (29 CFR 1926.58). These OSHA regulations apply only to employees. Employees involved in performing Operations and Maintenance (O&M) activities who might inadvertently be exposed to asbestos-containing materials during the normal course of their work activities would also be covered by these regulations.

The U.S. Department of Transportation (DOT) regulates the transport of commercial asbestos and asbestos waste and dictates labeling of waste bags and transport vehicles. The primary responsibility under DOT regulations lies within the waste hauler. However, it is incumbent upon the building owner to determine that waste hauled from its facility is properly bagged and labeled, that the waste arrives at an approved landfill, that a proper manifest is completed and that the hauler is properly licensed to haul asbestos waste.

The U.S. Environmental Protection Agency (EPA) has promulgated a series of regulations which focus on asbestos issues. Pertinent stipulations in these regulations are as follows:

CLEAN AIR ACT (CAA)

The EPA regulates asbestos under the National Emission Standards for Hazardous Air Pollutants (NESHAPS), which is listed as section 112 of the Clean Air Act (CAA). Under NESHAP, a hazardous pollutant has been defined as "an air pollutant to which no ambient air quality standard is applicable and which, in the judgment of the Administrator, causes or contributes to air pollution which may reasonably be anticipated to result in an increase in mortality or an increase in serious irreversible or incapacitating reversible illness." The NESHAP program currently regulates arsenic, benzene, beryllium, mercury, radionuclides, and vinyl chloride along with asbestos.

The purpose of the asbestos NESHAP is to protect the public from exposure to asbestos in the ambient air. The asbestos NESHAP program pertains primarily to demolition and renovations of buildings containing asbestos building materials. (The asbestos NESHAP also regulates manufacturing and fabricating operations, spray applications of asbestos, waste disposal for asbestos mills, inactive waste disposal sites, and established standards for asbestos mills and roadways).

The specific provisions of NESHAP for demolition or renovation of buildings containing asbestos are broken down into categories of notification, work practices, waste hauling, and waste disposal.

The building owner would be responsible for compliance with NESHAP regulations primarily during abatement activities. Issues such as work practices, waste hauling and waste disposal are normally specified in the project's plans and specifications. Verifying building owner's responsibility.

MAINE REGULATIONS

The Department of Environmental Protection (DEP) Asbestos Abatement Regulations (effective date of February 1, 1989) define the minimum work practice requirements for asbestos abatement contractors for any project in excess of 3 square or 3 linear feet. The removal of non-friable ACM during demolition is discussed in Paragraph 9 (K)(1). For removal of these materials under demolition conditions, friable ACM work practices would apply. Abatement work also requires conformance to OSHA regulation 29 CFR, Part 1926.1101. In addition to the mandatory requirements of this regulation, federal OSHA officials regulating Maine asbestos abatement contractors interpret Appendix F, Work Practices and Engineering Controls for Major Asbestos Removal, Renovation and Demolition Operations, as mandatory to abatement work including to traditionally non-friable materials such as roof systems. While stated as "non-mandatory", OSHA has determined that the standard will apply under their interpretation of "whenever feasible".

SURVEY PROTOCOL

The first step in developing a comprehensive facility asbestos management plan is to conduct a building survey to identify the locations and quantities of suspect ACM and to determine the conditions of those materials.

The scope of work for this survey included details of how the survey was to be conducted, the information to be gathered, and the form and content of the survey report.

The facility survey was conducted by one or more State of Maine Certified asbestos surveyors. The specifics of the survey included the following:

- Review of any existing asbestos survey reports.
- Visually inspecting accessible building areas to determine the location of suspect ACM.
- Sampling and evaluating suspect ACM to determine its accessibility and limit the occupancy of the surrounding building area to employees.
- Compiling and reporting survey data by functional area.
- Quantifying homogeneous materials, including both friable and non-friable suspect ACM.
- Gather information during the survey concerning locations, quantities, and types of suspect ACM.

BULK SAMPLING PROTOCOL

During the survey of this facility, bulk samples of suspect ACM were collected for laboratory analysis. The bulk samples were collected and categorized according to the homogeneous building materials being evaluated. The designation of homogeneous building materials was made by the APC surveyor. Once suspect homogeneous building materials were identified, bulk samples were collected in accordance with the State protocol as outlined Chapter 425 Asbestos Management Regulation. If a single sample of homogeneous material was found to contain asbestos, then that homogeneous material was identified as containing asbestos throughout the building.

Sampling techniques generally involved one of two different sampling procedures. A core-bore sample or sampling by breaking off a representative section of the homogeneous materials collected. The samples are then placed in separate containers which were labeled and marked with the sample number and noted on the facility drawing denoting its location. Disposable core bore devices were used with their individual containers to prevent cross contamination. Other bulk containers used were but not limited to whirl-pak bags or plastic film canisters.

LABORATORY ANALYTICAL DATA



Chain of Custody

Asbestos Lab Services

EMSL Analytical, Inc.
107 Haddon Avenue
Westmont, NJ 08108

Phone: (856) 858-4800
Fax: (856) 858-4960
(856) 427-1608
<http://www.emsl.com>

Please print all information legibly.

Company:	Abatement Professionals Corp.	Bill To:	Abatement Professionals Corp.
Address1:	590 County Road Suite 2	Address1:	590 County Road Suite 2
Address2:		Address2:	
City, State:	Westbrook, Maine	City, State:	Westbrook, Maine
Zip/Post Code:	04092	Zip/Post Code:	04092
Country:	USA	Country:	USA
Contact Name:	Bruce M. Hackett, Sr.	Attn:	Bruce M. Hackett, Sr.
Phone:	207-773-1276	Phone:	207-773-1276
Fax:	207-772-1203	Fax:	207-772-1203
Email:	bhackett@abatementpros.com	Email:	bhackett@abatementpros.com
EMSL Rep:	Dan	P.O. Number:	
Project Name/Number:	443 Congress 11-033		

MATRIX			TURNAROUND			
<input type="checkbox"/> Air	<input type="checkbox"/> Soil	<input type="checkbox"/> Micro-Vac	<input type="checkbox"/> 3 Hours	<input type="checkbox"/> 6 Hours	<input type="checkbox"/> 24 Hours (1 day)	
<input checked="" type="checkbox"/> Bulk	<input type="checkbox"/> Drinking Water		<input type="checkbox"/> 48 Hours (2 days)	<input checked="" type="checkbox"/> 72 Hours (3 days)	<input type="checkbox"/> 96 Hours (4 days)	<input type="checkbox"/> 120 Hours (5 days)
<input type="checkbox"/> Wipe	<input type="checkbox"/> Wastewater		<input type="checkbox"/> 144+ hours (6-10 days)			

TEM AIR, 3 hours, 6 hours, Please call ahead to schedule. There is a premium charge for 3-hour tat, please call 1-800-220-3675 for price prior to sending samples. You will be asked to sign an authorization form for this service.

* POSITIVE STOP *

<p>PCM - Air</p> <input type="checkbox"/> NIOSH 7400(A) Issue 2: August 1994 <input type="checkbox"/> OSHA w/TWA <input type="checkbox"/> Other:	<p>TEM Air</p> <input type="checkbox"/> AHERA 40 CFR, Part 763 Subpart E <input type="checkbox"/> NIOSH 7402 <input type="checkbox"/> EPA Level II	<p>TEM WATER</p> <input type="checkbox"/> EPA 100.1 <input type="checkbox"/> EPA 100.2 <input type="checkbox"/> NYS 198.2
<p>PLM - Bulk</p> <input checked="" type="checkbox"/> EPA 600/R-93/116 <input checked="" type="checkbox"/> EPA Point Count <input type="checkbox"/> NY Stratified Point Count <input type="checkbox"/> PLM NOB (Gravimetric) NYS 198.1 <input type="checkbox"/> NIOSH 9002: <input type="checkbox"/> EMSL Standard Addition:	<p>TEM BULK</p> <input type="checkbox"/> Drop Mount (Qualitative) <input type="checkbox"/> Chatfield SOP - 1988-02 <input type="checkbox"/> TEM NOB (Gravimetric) NYS 198.4 <input type="checkbox"/> EMSL Standard Addition:	<p>TEM Microvac/Wipe</p> <input type="checkbox"/> ASTM D 5755-95 (quantitative method) <input type="checkbox"/> Wipe Qualitative
<p>SEM Air or Bulk</p> <input type="checkbox"/> Qualitative <input type="checkbox"/> Quantitative	<p>PLM Soil</p> <input type="checkbox"/> EPA Protocol Qualitative <input type="checkbox"/> EPA Protocol Quantitative <input type="checkbox"/> EMSL MSD 9000 Method fibers/gram	<p>XRD</p> <input type="checkbox"/> Asbestos <input type="checkbox"/> Silica NIOSH 7500
<p>OTHER</p> <input type="checkbox"/>		



Chain of Custody

Asbestos Lab Services

EMSL Analytical, Inc.
107 Haddon Avenue
Westmont, NJ 08108

Phone: (856) 858-4800
Fax: (856) 858-4960
(856) 427-1608
<http://www.emsl.com>

Please print all information legibly.

Client Sample # (s) B1A - B14C

Total Samples #: 42

Relinquished: Bone Date: 2/10/11

Time: 1600

Received: _____ Date: _____

Time: _____

Relinquished: _____ Date: _____

Time: _____

Received: _____ Date: _____

Time: _____

SAMPLE NUMBER	SAMPLE DESCRIPTION/LOCATION	VOLUME (if applicable)
B1A-C	9" x 9" white Painted Floor Tile	
B2A-C	underlying Adhesive	
B3A-C	12" x 12" white Painted Floor tile	
B4A-C	underlying Adhesive	
B5A-C	Kitchen Top layer Gray Speckled LINO	
B6A-C	Kitchen 2 nd layer LINO	
B7A-C	Kitchen Bottom layer Tye/Mastic	
B8A-C	Back Hallway & Bathroom TOP 12x12	
B9A-C	" 2 nd Layer Tile	
B10A-C	underlying Adhesive	
B11A-C	near Exit/Entrance 12x12 ^{LFT} corner	
B12A-C	underlying Adhesive	
B13A-C	wall/ceiling Plaster TOP COAT	
B14A-C	wall/ceiling Plaster Brown COAT	



Chain of Custody

Asbestos Lab Services

EMSL Analytical, Inc.
107 Haddon Avenue
Westmont, NJ 08108

Phone: (856) 858-4800
Fax: (856) 858-4960
(856) 427-1608
<http://www.emsl.com>

Please print all information legibly.

Client Sample # (s) B15A - B28C

Total Samples #: 42

Relinquished: [Signature] Date: 2/10/11

Time: 1600

Received: _____ Date: _____

Time: _____

Relinquished: _____ Date: _____

Time: _____

Received: _____ Date: _____

Time: _____

SAMPLE NUMBER	SAMPLE DESCRIPTION/LOCATION	VOLUME (if applicable)
B15 A-C	2'x4' Acustical Ceiling Tile	
B16 A-C	Heater wall TOP COAT	
B17 A-C	Heater wall Brown COAT	
B18 A-C	Green Rolled Lino	
B19 A-C	White Speckled rolled Lino	
B20 A-C	Vault mastic	
B21 A-C	Vault 12" x 12" Tile	
B22 A-C	2'x4' B Squared Pattern Ceiling Tile	
B23 A-C	Radiator mudded ELBOWS	
B24 A-C	Back Right corner Hall/Bath Lino	
B25 A-C	Fiberglass run Fitting & ELBOWS	
B26 A-C	Old ceiling Glue Dots	
B27 A-C	9" x 9" VAT	
B28 A-C	underlying Adhesive	

2nd FLOOR →



Chain of Custody

Asbestos Lab Services

EMSL Analytical, Inc.
107 Haddon Avenue
Westmont, NJ 08108

Phone: (856) 858-4800
Fax: (856) 858-4960
(856) 427-1608
<http://www.emsl.com>

Please print all information legibly.

Client Sample # (s) B40A - B51C

Total Samples #: 36

Relinquished: B Date: 2/10/11

Time: 1600

Received: _____ Date: _____

Time: _____

Relinquished: _____ Date: _____

Time: _____

Received: _____ Date: _____

Time: _____

TOTAL 156

SAMPLE NUMBER	SAMPLE DESCRIPTION/LOCATION	VOLUME (if applicable)
B40 A-C	Middle Left section 12"x12" ceiling Tile	
<u>B41 A-C</u>	9"x9" Gray Painted tile	
B42 A-C	12"x12" worm hole ceiling Tiles	
<u>B43 A-C</u>	Kitchen/mech. TSI / ELBOWS	
<u>B44 A-C</u>	Basement 9"x9" Brown	
B45 A-C	" " white	
<u>B46 A-C</u>	Mech. 9"x9" VAT/music	
B47 A-C	wall/ceiling Plaster TOP COAT	
B48 A-C	" " " BROWN COAT	
B49 A-C	wall/ceiling Plaster	
B50 A-C	Previous ceiling Glue Dots	
B51 A-C	Window Glazing/Caulking	

Basement

4th Floor

6th Floor
7th Floor



Chain of Custody

Asbestos Lab Services

EMSL Analytical, Inc.
107 Haddon Avenue
Westmont, NJ 08108

Phone: (856) 858-4800
Fax: (856) 858-4960
(856) 427-1608
<http://www.emsl.com>

Please print all information legibly.

Client Sample # (s) B29A - B39C

Total Samples #: 36

Relinquished: B Date: 2/10/11

Time: _____

Received: _____ Date: _____

Time: _____

Relinquished: _____ Date: _____

Time: _____

Received: _____ Date: _____

Time: _____

SAMPLE NUMBER	SAMPLE DESCRIPTION/LOCATION	VOLUME (if applicable)
<u>B29 A-C</u>	Hallway / Mech. Room 9"x9"	
BBB-1	Blue Rolled Linp	
BBB-2	↓	
BBB-3		
B30 A-C		Vinyl Sheet Flooring
<u>B31 A-C</u>	Kitchen Floor Tile 12"x12"	
B32 A-C	underlying Adhesive	
<u>B33 A-C</u>	9"x9" VAT (Mech. Rm Too)	
B34 A-C	Back hall/bath 12"x12"	
B35 A-C	12"x12" Floor Tile	
<u>B36 A-C</u>	Kitchenette 12"x12" Floor Tile	
B37 A-C	2'x2' Textured Red Back Ceiling Tile	
B38 A-C	Kitchenette mastic	
B39 A-C	12"x12" Hallway Ceiling Tiles	

3rd Floor

5th Floor



EMSL Analytical, Inc.
 200 Route 130 North, Cinnaminson, NJ 08077
 Phone: (800) 220-3875 Fax: (856) 786-5974 Email: westmontaslab@EMSL.com

Attn: **Bruce M. Hackett, Sr.**
Abatement Professionals Corp.
590 County Road
Westbrook, ME 04092

Customer ID: ABAT52
 Customer PO:
 Received: 02/11/11 10:50 AM
 EMSL Order: 041103136
 EMSL Proj:
 Analysis Date: 2/15/2011

Fax: (207) 772-1203 Phone: (207) 773-1276
 Project: 443 CONGRESS 11-033

Test Report: Asbestos Analysis of Bulk Materials via EPA 600/R-93/116 Method using Polarized Light Microscopy

Sample	Description	Appearance	Non-Asbestos		Asbestos
			% Fibrous	% Non-Fibrous	% Type
B1A 041103136-0001	- 9X9 WHITE PAINTED FLOOR TILE	Tan Non-Fibrous Heterogeneous		97% Non-fibrous (other)	3% Chrysotile
B1B 041103136-0002	- 9X9 WHITE PAINTED FLOOR TILE				Stop Positive (Not Analyzed)
B1C 041103136-0003	- 9X9 WHITE PAINTED FLOOR TILE				Stop Positive (Not Analyzed)
B2A 041103136-0004	- UNDERLYING ADHESIVE	Black Non-Fibrous Homogeneous		100% Non-fibrous (other)	None Detected
B2B 041103136-0005	- UNDERLYING ADHESIVE	Black Non-Fibrous Homogeneous		100% Non-fibrous (other)	None Detected
B2C 041103136-0006	- UNDERLYING ADHESIVE	Black Non-Fibrous Heterogeneous		100% Non-fibrous (other)	None Detected
B3A 041103136-0007	- 12X12 WHITE PAINTED FLOOR TILE	Cream Non-Fibrous Heterogeneous		100% Non-fibrous (other)	None Detected

Initial report from 02/15/2011 19:54:01

Analyst(s)

Daniel Sivco (14) Gregory Mortka (51) Naadira Carter (1) Stephen Siegel, CIH, Laboratory Manager
 Glenn Brennan (56) Garret Vliet (13) or other approved signatory

EMSL maintains liability limited to the cost of analysis. This report relates only to the samples reported above and may not be reproduced, except in full, without written approval by EMSL. EMSL bears no responsibility for sample collection activities or analytical method limitations. Interpretation and use of test results are the responsibility of the client. This report must not be used by the client to claim product certification, approval or endorsement by NVLAP, NIST or any agency of the federal government. The test results contained within this report meet the requirements of NELAC unless otherwise specified. Samples received in good condition unless otherwise noted.

Samples analyzed by EMSL Analytical, Inc. 200 Route 130 North, Cinnaminson NJ NVLAP Lab Code 101048-0, AIHA-LAP, LLC-IHLAP Lab 100194, NYS ELAP 10872, NJ DEP 03036



EMSL Analytical, Inc.
 200 Route 130 North, Cinnaminson, NJ 08077
 Phone: (800) 220-3875 Fax: (856) 796-5974 Email: westmontaslab@EMSL.com

Attn: **Bruce M. Hackett, Sr.**
Abatement Professionals Corp.
590 County Road
Westbrook, ME 04092

Customer ID: ABAT52
 Customer PO:
 Received: 02/11/11 10:50 AM
 EMSL Order: 041103136
 EMSL Proj:
 Analysis Date: 2/15/2011

Fax: (207) 772-1203 Phone: (207) 773-1276
 Project: **443 CONGRESS 11-033**

Test Report: Asbestos Analysis of Bulk Materials via EPA 600/R-93/116 Method using Polarized Light Microscopy

Sample	Description	Appearance	Non-Asbestos		Asbestos
			% Fibrous	% Non-Fibrous	% Type
B3B 041103136-0008	- 12X12 WHITE PAINTED FLOOR TILE	Cream Non-Fibrous Heterogeneous		100% Non-fibrous (other)	None Detected
B3C 041103136-0009	- 12X12 WHITE PAINTED FLOOR TILE	Cream Non-Fibrous Heterogeneous		100% Non-fibrous (other)	None Detected
B4A 041103136-0010	- UNDERLYING ADHESIVE	Black Non-Fibrous Homogeneous		75% Non-fibrous (other)	25% Chrysotile
B4B 041103136-0011	- UNDERLYING ADHESIVE				Stop Positive (Not Analyzed)
B4C 041103136-0012	- UNDERLYING ADHESIVE				Stop Positive (Not Analyzed)
B5A 041103136-0013	KITCHEN - TOP LAYER GRAY SPECKLED LINO	Tan Fibrous Heterogeneous	30% Cellulose	70% Non-fibrous (other)	None Detected
B5B 041103136-0014	KITCHEN - TOP LAYER GRAY SPECKLED LINO	Tan Fibrous Heterogeneous	30% Cellulose	70% Non-fibrous (other)	None Detected

Initial report from 02/15/2011 19:54:01

Analyst(s)

Daniel Sivco (14) Gregory Mortka (51) Naadira Carter (1) Stephen Siegel, CIH, Laboratory Manager or other approved signatory
 Glenn Brennan (56) Garret Vliet (13)

EMSL maintains liability limited to the cost of analysis. This report relates only to the samples reported above and may not be reproduced, except in full, without written approval by EMSL. EMSL bears no responsibility for sample collection activities or analytical method limitations. Interpretation and use of test results are the responsibility of the client. This report must not be used by the client to claim product certification, approval or endorsement by NVLAP, NIST or any agency of the federal government. The test results contained within this report meet the requirements of NELAC unless otherwise specified. Samples received in good condition unless otherwise noted.

Samples analyzed by EMSL Analytical, Inc. 200 Route 130 North, Cinnaminson NJ NVLAP Lab Code 101048-0, AIHA-LAP, LLC-IHLAP Lab 100194, NYS ELAP 10872, NJ DEP 03036



EMSL Analytical, Inc.
 200 Route 130 North, Cinnaminson, NJ 08077
 Phone: (800) 220-3675 Fax: (856) 786-5974 Email: westmontaslab@EMSL.com

Attn: **Bruce M. Hackett, Sr.**
Abatement Professionals Corp.
590 County Road
Westbrook, ME 04092

Customer ID: ABAT52
 Customer PO:
 Received: 02/11/11 10:50 AM
 EMSL Order: 041103136
 EMSL Proj:
 Analysis Date: 2/15/2011

Fax: (207) 772-1203 Phone: (207) 773-1276
 Project: 443 CONGRESS 11-033

Test Report: Asbestos Analysis of Bulk Materials via EPA 600/R-93/116 Method using Polarized Light Microscopy

Sample	Description	Appearance	Non-Asbestos		Asbestos
			% Fibrous	% Non-Fibrous	% Type
B5C 041103136-0015	KITCHEN - TOP LAYER GRAY SPECKLED LINO	Tan Fibrous Heterogeneous	30% Cellulose 5% Glass	65% Non-fibrous (other)	None Detected
B6A-Linoleum 041103136-0016	KITCHEN - 2ND LAYER LINO	Gray Fibrous Heterogeneous	25% Cellulose 7% Synthetic	68% Non-fibrous (other)	None Detected
B6A-Mastic 041103136-0016A	KITCHEN - 2ND LAYER LINO	Yellow Non-Fibrous Homogeneous		100% Non-fibrous (other)	None Detected
B6B-Linoleum 041103136-0017	KITCHEN - 2ND LAYER LINO	Gray Fibrous Heterogeneous	30% Cellulose 5% Synthetic	65% Non-fibrous (other)	None Detected
B6B-Mastic 041103136-0017A	KITCHEN - 2ND LAYER LINO	Yellow Non-Fibrous Homogeneous		100% Non-fibrous (other)	None Detected
B6C-Linoleum 041103136-0018	KITCHEN - 2ND LAYER LINO	Gray Fibrous Heterogeneous	5% Synthetic 30% Cellulose	65% Non-fibrous (other)	None Detected
B6C-Mastic 041103136-0018A	KITCHEN - 2ND LAYER LINO	Yellow Non-Fibrous Heterogeneous		100% Non-fibrous (other)	None Detected

Initial report from 02/15/2011 19:54:01

Analyst(s)

Daniel Sivco (14) Gregory Mortka (51) Naadira Carter (1) Stephen Siegel, CIH, Laboratory Manager
Glenn Brennan (56) Garret Vliet (13) or other approved signatory

EMSL maintains liability limited to the cost of analysis. This report relates only to the samples reported above and may not be reproduced, except in full, without written approval by EMSL. EMSL bears no responsibility for sample collection activities or analytical method limitations. Interpretation and use of test results are the responsibility of the client. This report must not be used by the client to claim product certification, approval or endorsement by NVLAP, NIST or any agency of the federal government. The test results contained within this report meet the requirements of NELAC unless otherwise specified. Samples received in good condition unless otherwise noted.

Samples analyzed by EMSL Analytical, Inc. 200 Route 130 North, Cinnaminson NJ NVLAP Lab Code 101048-0, AIHA-LAP, LLC-IHLAP Lab 100194, NYS ELAP 10872, NJ DEP 03036



EMSL Analytical, Inc.
 200 Route 130 North, Cinnaminson, NJ 08077
 Phone: (800) 220-3875 Fax: (856) 786-5974 Email: wesimontaslab@EMSL.com

Attn: **Bruce M. Hackett, Sr.**
Abatement Professionals Corp.
590 County Road
Westbrook, ME 04092

Customer ID: ABAT52
 Customer PO:
 Received: 02/11/11 10:50 AM
 EMSL Order: 041103136
 EMSL Proj:
 Analysis Date: 2/15/2011

Fax: (207) 772-1203 Phone: (207) 773-1276
 Project: 443 CONGRESS 11-033

Test Report: Asbestos Analysis of Bulk Materials via EPA 600/R-93/116 Method using Polarized Light Microscopy

Sample	Description	Appearance	Non-Asbestos		Asbestos
			% Fibrous	% Non-Fibrous	% Type
B7A-Tile 041103136-0019	KITCHEN - BOTTOM LAYER TAR/MASTIC	Black Non-Fibrous Heterogeneous		85% Non-fibrous (other)	15% Chrysotile
B7A-Mastic 041103136-0019A	KITCHEN - BOTTOM LAYER TAR/MASTIC	Brown/Black Non-Fibrous Heterogeneous	40% Cellulose 10% Synthetic	50% Non-fibrous (other)	None Detected
B7B-Tile 041103136-0020	KITCHEN - BOTTOM LAYER TAR/MASTIC				Stop Positive (Not Analyzed)
B7B-Mastic 041103136-0020A	KITCHEN - BOTTOM LAYER TAR/MASTIC	Brown/Black Non-Fibrous Heterogeneous	45% Cellulose 7% Synthetic	48% Non-fibrous (other)	None Detected
B7C-Tile 041103136-0021	KITCHEN - BOTTOM LAYER TAR/MASTIC				Stop Positive (Not Analyzed)
B7C-Mastic 041103136-0021A	KITCHEN - BOTTOM LAYER TAR/MASTIC				Insufficient Material
B8A 041103136-0022	BACK HALLWAY & BATHROOM - TOP 12X12	White Non-Fibrous Heterogeneous		100% Non-fibrous (other)	None Detected

Initial report from 02/15/2011 19:54:01

Analyst(s)

Daniel Sivco (14) Gregory Mortka (51) Naadira Carter (1) Stephen Siegel, CIH, Laboratory Manager
 Glenn Brennan (56) Garret Vliet (13) or other approved signatory

EMSL maintains liability limited to the cost of analysis. This report relates only to the samples reported above and may not be reproduced, except in full, without written approval by EMSL. EMSL bears no responsibility for sample collection activities or analytical method limitations. Interpretation and use of test results are the responsibility of the client. This report must not be used by the client to claim product certification, approval or endorsement by NVLAP, NIST or any agency of the federal government. The test results contained within this report meet the requirements of NELAC unless otherwise specified. Samples received in good condition unless otherwise noted.
 Samples analyzed by EMSL Analytical, Inc. 200 Route 130 North, Cinnaminson NJ NVLAP Lab Code 101048-0, AIHA-LAP, LLC-IHLAP Lab 100194, NYS ELAP 10872, NJ DEP 03036



EMSL Analytical, Inc.
 200 Route 130 North, Cinnaminson, NJ 08077
 Phone: (800) 220-3875 Fax: (856) 786-5974 Email: wesimontasblab@EMSL.com

Attn: **Bruce M. Hackett, Sr.**
Abatement Professionals Corp.
590 County Road
Westbrook, ME 04092

Customer ID: ABAT52
 Customer PO:
 Received: 02/11/11 10:50 AM
 EMSL Order: 041103136
 EMSL Proj:
 Analysis Date: 2/15/2011

Fax: (207) 772-1203 Phone: (207) 773-1276
 Project: 443 CONGRESS 11-033

Test Report: Asbestos Analysis of Bulk Materials via EPA 600/R-93/116 Method using Polarized Light Microscopy

Sample	Description	Appearance	Non-Asbestos		Asbestos
			% Fibrous	% Non-Fibrous	% Type
B8B 041103136-0023	BACK HALLWAY & BATHROOM - TOP 12X12	White Non-Fibrous Heterogeneous		100% Non-fibrous (other)	None Detected
B8C 041103136-0024	BACK HALLWAY & BATHROOM - TOP 12X12	White Non-Fibrous Heterogeneous		100% Non-fibrous (other)	None Detected
B9A-Floor Tile 041103136-0025	BACK HALLWAY & BATHROOM - 2ND LAYER TILE	Non-Fibrous Heterogeneous		96% Non-fibrous (other)	4% Chrysotile
B9A-Mastic 041103136-0025A	BACK HALLWAY & BATHROOM - 2ND LAYER TILE	Yellow Non-Fibrous Homogeneous		100% Non-fibrous (other)	None Detected
B9B-Floor Tile 041103136-0026	BACK HALLWAY & BATHROOM - 2ND LAYER TILE				Stop Positive (Not Analyzed)
B9B-Mastic 041103136-0026A	BACK HALLWAY & BATHROOM - 2ND LAYER TILE	Yellow Non-Fibrous Homogeneous		100% Non-fibrous (other)	None Detected
B9C-Floor Tile 041103136-0027	BACK HALLWAY & BATHROOM - 2ND LAYER TILE				Stop Positive (Not Analyzed)

Initial report from 02/15/2011 19:54:01

Analyst(s)

Daniel Sivco (14) Gregory Mortka (51) Naadira Carter (1) Stephen Siegel, CIH, Laboratory Manager
 Glenn Brennan (56) Garret Vliet (13) or other approved signatory

EMSL maintains liability limited to the cost of analysis. This report relates only to the samples reported above and may not be reproduced, except in full, without written approval by EMSL. EMSL bears no responsibility for sample collection activities or analytical method limitations. Interpretation and use of test results are the responsibility of the client. This report must not be used by the client to claim product certification, approval or endorsement by NVLAP, NIST or any agency of the federal government. The test results contained within this report meet the requirements of NELAC unless otherwise specified. Samples received in good condition unless otherwise noted.
 Samples analyzed by EMSL Analytical, Inc. 200 Route 130 North, Cinnaminson NJ NVLAP Lab Code 101048-0, AIHA-LAP, LLC-IHLAP Lab 100194, NYS ELAP 10872, NJ DEP 03036



EMSL Analytical, Inc.
 200 Route 130 North, Cinnaminson, NJ 08077
 Phone: (800) 220-3875 Fax: (856) 786-5974 Email: westmontaslab@EMSL.com

Attn: **Bruce M. Hackett, Sr.**
Abatement Professionals Corp.
590 County Road
Westbrook, ME 04092

Customer ID: ABAT52
 Customer PO:
 Received: 02/11/11 10:50 AM
 EMSL Order: 041103136
 EMSL Proj:
 Analysis Date: 2/15/2011

Fax: (207) 772-1203 Phone: (207) 773-1276
 Project: 443 CONGRESS 11-033

Test Report: Asbestos Analysis of Bulk Materials via EPA 600/R-93/116 Method using Polarized Light Microscopy

Sample	Description	Appearance	Non-Asbestos		Asbestos
			% Fibrous	% Non-Fibrous	% Type
B9C-Mastic 041103136-0027A	BACK HALLWAY & BATHROOM - 2ND LAYER TILE	Yellow Non-Fibrous Heterogeneous		100% Non-fibrous (other)	None Detected
B10A 041103136-0028	BACK HALLWAY & BATHROOM - UNDERLYING ADHESIVE	Black Non-Fibrous Heterogeneous		95% Non-fibrous (other)	5% Chrysotile
B10B 041103136-0029	BACK HALLWAY & BATHROOM - UNDERLYING ADHESIVE				Stop Positive (Not Analyzed)
B10C 041103136-0030	BACK HALLWAY & BATHROOM - UNDERLYING ADHESIVE				Stop Positive (Not Analyzed)
B11A 041103136-0031	REAR EXIT/ENTRANCE - 12X12 LFT CORNER	White Non-Fibrous Heterogeneous		100% Non-fibrous (other)	None Detected
B11B 041103136-0032	REAR EXIT/ENTRANCE - 12X12 LFT CORNER	White Non-Fibrous Heterogeneous		100% Non-fibrous (other)	None Detected

Initial report from 02/15/2011 19:54:01

Analyst(s)

Daniel Sivco (14) *Gregory Mortka (51)* *Naadira Carter (1)* Stephen Siegel, CIH, Laboratory Manager
Glenn Brennan (56) *Garret Vliet (13)* or other approved signatory

EMSL maintains liability limited to the cost of analysis. This report relates only to the samples reported above and may not be reproduced, except in full, without written approval by EMSL. EMSL bears no responsibility for sample collection activities or analytical method limitations. Interpretation and use of test results are the responsibility of the client. This report must not be used by the client to claim product certification, approval or endorsement by NVLAP, NIST or any agency of the federal government. The test results contained within this report meet the requirements of NELAC unless otherwise specified. Samples received in good condition unless otherwise noted.

Samples analyzed by EMSL Analytical, Inc. 200 Route 130 North, Cinnaminson NJ NVLAP Lab Code 101048-0, AIHA-LAP, LLC-IHLAP Lab 100194, NYS ELAP 10872, NJ DEP 03036



EMSL Analytical, Inc.
 200 Route 130 North, Cinnaminson, NJ 08077
 Phone: (800) 220-3875 Fax: (856) 796-5974 Email: westmontaslab@EMSL.com

Attn: **Bruce M. Hackett, Sr.**
Abatement Professionals Corp.
590 County Road
Westbrook, ME 04092

Customer ID: ABAT52
 Customer PO:
 Received: 02/11/11 10:50 AM
 EMSL Order: 041103136
 EMSL Proj:
 Analysis Date: 2/15/2011

Fax: (207) 772-1203 Phone: (207) 773-1276
 Project: 443 CONGRESS 11-033

Test Report: Asbestos Analysis of Bulk Materials via EPA 600/R-93/116 Method using Polarized Light Microscopy

Sample	Description	Appearance	Non-Asbestos		Asbestos
			% Fibrous	% Non-Fibrous	% Type
B11C 041103136-0033	REAR EXIT/ENTRANCE - 12X12 LFT CORNER	White Non-Fibrous Heterogeneous		100% Non-fibrous (other)	None Detected
B12A 041103136-0034	REAR EXIT/ENTRANCE - UNDERLYING ADHESIVE	Brown Non-Fibrous Homogeneous		100% Non-fibrous (other)	None Detected
B12B 041103136-0035	REAR EXIT/ENTRANCE - UNDERLYING ADHESIVE	Brown Non-Fibrous Homogeneous		100% Non-fibrous (other)	None Detected
B12C 041103136-0036	REAR EXIT/ENTRANCE - UNDERLYING ADHESIVE	Brown Non-Fibrous Heterogeneous		100% Non-fibrous (other)	None Detected
B13A 041103136-0037	- WALL/CEILING PLASTER TOP COAT	White Non-Fibrous Heterogeneous		100% Non-fibrous (other)	None Detected
B13B 041103136-0038	- WALL/CEILING PLASTER TOP COAT	Non-Fibrous Heterogeneous		100% Non-fibrous (other)	None Detected

Initial report from 02/15/2011 19:54:01

Analyst(s)

Daniel Sivco (14) *Gregory Mortka (51)* *Naadira Carter (1)* Stephen Siegel, CIH, Laboratory Manager
Glenn Brennan (56) *Garret Vliet (13)* or other approved signatory

EMSL maintains liability limited to the cost of analysis. This report relates only to the samples reported above and may not be reproduced, except in full, without written approval by EMSL. EMSL bears no responsibility for sample collection activities or analytical method limitations. Interpretation and use of test results are the responsibility of the client. This report must not be used by the client to claim product certification, approval or endorsement by NVLAP, NIST or any agency of the federal government. The test results contained within this report meet the requirements of NELAC unless otherwise specified. Samples received in good condition unless otherwise noted.

Samples analyzed by EMSL Analytical, Inc. 200 Route 130 North, Cinnaminson NJ NVLAP Lab Code 101048-0, AIHA-LAP, LLC-IHLAP Lab 100194, NYS ELAP 10872, NJ DEP 03036



EMSL Analytical, Inc.

200 Route 130 North, Cinnaminson, NJ 08077

Phone: (800) 220-3675 Fax: (856) 796-5974 Email: westmontslab@EMSL.com

Attn: **Bruce M. Hackett, Sr.**
Abatement Professionals Corp.
590 County Road
Westbrook, ME 04092

Customer ID: ABAT52
 Customer PO:
 Received: 02/11/11 10:50 AM
 EMSL Order: 041103136
 EMSL Proj:
 Analysis Date: 2/15/2011

Fax: (207) 772-1203 Phone: (207) 773-1276
 Project: 443 CONGRESS 11-033

Test Report: Asbestos Analysis of Bulk Materials via EPA 600/R-93/116 Method using Polarized Light Microscopy

Sample	Description	Appearance	Non-Asbestos		Asbestos
			% Fibrous	% Non-Fibrous	% Type
B13C 041103136-0039	- WALL/CEILING PLASTER TOP COAT	White Non-Fibrous Heterogeneous		100% Non-fibrous (other)	None Detected
B14A 041103136-0040	- WALL/CEILING PLASTER BROWN COAT	Gray/Tan Fibrous Heterogeneous	2% Hair	98% Non-fibrous (other)	None Detected
B14B 041103136-0041	- WALL/CEILING PLASTER BROWN COAT	Gray/Tan Fibrous Heterogeneous	1% Hair	99% Non-fibrous (other)	None Detected
B14C 041103136-0042	- WALL/CEILING PLASTER BROWN COAT	Gray Fibrous Heterogeneous	<1% Hair	100% Non-fibrous (other)	None Detected
B15A 041103136-0043	- 2X4 ACUSTICAL CEILING TILE	Gray/White Fibrous Heterogeneous	45% Cellulose 30% Min. Wood	25% Non-fibrous (other)	None Detected
B15B 041103136-0044	- 2X4 ACUSTICAL CEILING TILE	Gray/White Fibrous Heterogeneous	45% Cellulose 30% Min. Wood	25% Non-fibrous (other)	None Detected
B15C 041103136-0045	- 2X4 ACUSTICAL CEILING TILE	Gray/White Fibrous Heterogeneous	65% Cellulose 15% Min. Wood	20% Non-fibrous (other)	None Detected

Initial report from 02/15/2011 19:54:01

Analyst(s)

Daniel Sivco (14) Gregory Mortka (51) Naadira Carter (1) Stephen Siegel, CIH, Laboratory Manager
Glenn Brennan (56) Garret Vliet (13) or other approved signatory

EMSL maintains liability limited to the cost of analysis. This report relates only to the samples reported above and may not be reproduced, except in full, without written approval by EMSL. EMSL bears no responsibility for sample collection activities or analytical method limitations. Interpretation and use of test results are the responsibility of the client. This report must not be used by the client to claim product certification, approval or endorsement by NVLAP, NIST or any agency of the federal government. The test results contained within this report meet the requirements of NELAC unless otherwise specified. Samples received in good condition unless otherwise noted.

Samples analyzed by EMSL Analytical, Inc. 200 Route 130 North, Cinnaminson NJ NVLAP Lab Code 101048-0, AIHA-LAP, LLC-IHLAP Lab 100194, NYS ELAP 10872, NJ DEP 03036



EMSL Analytical, Inc.
 200 Route 130 North, Cinnaminson, NJ 08077
 Phone: (800) 226-3875 Fax: (856) 796-5974 Email: westmontaslab@EMSL.com

Attn: **Bruce M. Hackett, Sr.**
Abatement Professionals Corp.
590 County Road
Westbrook, ME 04092

Customer ID: ABAT52
 Customer PO:
 Received: 02/11/11 10:50 AM
 EMSL Order: 041103136

Fax: (207) 772-1203 Phone: (207) 773-1276
 Project: 443 CONGRESS 11-033

EMSL Proj:
 Analysis Date: 2/15/2011

Test Report: Asbestos Analysis of Bulk Materials via EPA 600/R-93/116 Method using Polarized Light Microscopy

Sample	Description	Appearance	Non-Asbestos		Asbestos
			% Fibrous	% Non-Fibrous	% Type
B16A 041103136-0046	- HEATER WALL TOP COAT	White Non-Fibrous Heterogeneous		100% Non-fibrous (other)	None Detected
B16B 041103136-0047	- HEATER WALL TOP COAT	White Non-Fibrous Heterogeneous		100% Non-fibrous (other)	None Detected
B16C 041103136-0048	- HEATER WALL TOP COAT	White Non-Fibrous Heterogeneous		100% Non-fibrous (other)	None Detected
B17A 041103136-0049	- HEATER WALL BROWN COAT	Gray/Tan Fibrous Heterogeneous	3% Synthetic	97% Non-fibrous (other)	None Detected
B17B 041103136-0050	- HEATER WALL BROWN COAT	Gray/Tan Fibrous Heterogeneous	2% Synthetic	98% Non-fibrous (other)	None Detected
B17C 041103136-0051	- HEATER WALL BROWN COAT	Brown Non-Fibrous Heterogeneous	3% Cellulose	97% Non-fibrous (other)	None Detected
B18A 041103136-0052	- GREEN ROLLED LINO	Tan Fibrous Heterogeneous	30% Cellulose 3% Synthetic	67% Non-fibrous (other)	None Detected

3

Initial report from 02/15/2011 19:54:01

Analyst(s)

Daniel Sivco (14) *Gregory Mortka (51)* *Naadira Carter (1)* Stephen Siegel, CIH, Laboratory Manager
Glenn Brennan (56) *Garret Vliet (13)* or other approved signatory

EMSL maintains liability limited to the cost of analysis. This report relates only to the samples reported above and may not be reproduced, except in full, without written approval by EMSL. EMSL bears no responsibility for sample collection activities or analytical method limitations. Interpretation and use of test results are the responsibility of the client. This report must not be used by the client to claim product certification, approval or endorsement by NVLAP, NIST or any agency of the federal government. The test results contained within this report meet the requirements of NELAC unless otherwise specified. Samples received in good condition unless otherwise noted.
 Samples analyzed by EMSL Analytical, Inc. 200 Route 130 North, Cinnaminson NJ NVLAP Lab Code 101048-0, AIHA-LAP, LLC-IHLAP Lab 100194, NYS ELAP 10872, NJ DEP 03036



EMSL Analytical, Inc.
 200 Route 130 North, Cinnaminson, NJ 08077
 Phone: (800) 220-3875 Fax: (856) 786-5974 Email: wesimontaslab@EMSL.com

Attn: **Bruce M. Hackett, Sr.**
Abatement Professionals Corp.
590 County Road
Westbrook, ME 04092

Customer ID: ABAT52
 Customer PO:
 Received: 02/11/11 10:50 AM
 EMSL Order: 041103136
 EMSL Proj:
 Analysis Date: 2/15/2011

Fax: (207) 772-1203 Phone: (207) 773-1276
 Project: 443 CONGRESS 11-033

Test Report: Asbestos Analysis of Bulk Materials via EPA 600/R-93/116 Method using Polarized Light Microscopy

Sample	Description	Appearance	Non-Asbestos		Asbestos
			% Fibrous	% Non-Fibrous	% Type
B18B 041103136-0053	- GREEN ROLLED LINO	Tan Fibrous Heterogeneous	30% Cellulose 2% Synthetic	68% Non-fibrous (other)	None Detected
B18C 041103136-0054	- GREEN ROLLED LINO	Gray/Tan Non-Fibrous Heterogeneous	20% Cellulose	80% Non-fibrous (other)	None Detected
B19A 041103136-0055	- WHITE SPECKLED ROLLED LINO	Gray Fibrous Heterogeneous	35% Cellulose 5% Synthetic	60% Non-fibrous (other)	None Detected
B19B 041103136-0056	- WHITE SPECKLED ROLLED LINO	Gray Fibrous Heterogeneous	30% Cellulose 5% Synthetic	65% Non-fibrous (other)	None Detected
B19C 041103136-0057	- WHITE SPECKLED ROLLED LINO	Gray Fibrous Heterogeneous	15% Cellulose 5% Glass	80% Non-fibrous (other)	None Detected
B20A 041103136-0058	- VAULT MASTIC	Black Non-Fibrous Homogeneous		88% Non-fibrous (other)	12% Chrysotile
B20B 041103136-0059	- VAULT MASTIC				Stop Positive (Not Analyzed)

Initial report from 02/15/2011 19:54:01

Analyst(s)

Daniel Sivco (14) *Gregory Mortka (51)* *Naadira Carter (1)* Stephen Siegel, CIH, Laboratory Manager
Glenn Brennan (56) *Garret Vliet (13)* or other approved signatory

EMSL maintains liability limited to the cost of analysis. This report relates only to the samples reported above and may not be reproduced, except in full, without written approval by EMSL. EMSL bears no responsibility for sample collection activities or analytical method limitations. Interpretation and use of test results are the responsibility of the client. This report must not be used by the client to claim product certification, approval or endorsement by NVLAP, NIST or any agency of the federal government. The test results contained within this report meet the requirements of NELAC unless otherwise specified. Samples received in good condition unless otherwise noted.
 Samples analyzed by EMSL Analytical, Inc. 200 Route 130 North, Cinnaminson NJ NVLAP Lab Code 101048-0, AIHA-LAP, LLC-IHLAP Lab 100194, NYS ELAP 10872, NJ DEP 03036



EMSL Analytical, Inc.
 200 Route 130 North, Cinnaminson, NJ 08077
 Phone: (800) 220-3675 Fax: (856) 796-5974 Email: westmontasblab@EMSL.com

Attn: **Bruce M. Hackett, Sr.**
Abatement Professionals Corp.
590 County Road
Westbrook, ME 04092

Customer ID: ABAT52
 Customer PO:
 Received: 02/11/11 10:50 AM
 EMSL Order: 041103136
 EMSL Proj:
 Analysis Date: 2/15/2011

Fax: (207) 772-1203 Phone: (207) 773-1276
 Project: 443 CONGRESS 11-033

Test Report: Asbestos Analysis of Bulk Materials via EPA 600/R-93/116 Method using Polarized Light Microscopy

Sample	Description	Appearance	Non-Asbestos		Asbestos
			% Fibrous	% Non-Fibrous	% Type
B20C 041103136-0060	- VAULT MASTIC				Stop Positive (Not Analyzed)
B21A 041103136-0061	- VAULT 12X12 TILE	Tan Non-Fibrous Heterogeneous		96% Non-fibrous (other)	4% Chrysotile
B21B 041103136-0062	- VAULT 12X12 TILE				Stop Positive (Not Analyzed)
B21C 041103136-0063	- VAULT 12X12 TILE				Stop Positive (Not Analyzed)
B22A 041103136-0064	- 2X4 8 SQUARED PATTERN CEILING TILE	Gray/White Fibrous Heterogeneous	40% Cellulose 30% Min. Wool	30% Non-fibrous (other)	None Detected
B22B 041103136-0065	- 2X4 8 SQUARED PATTERN CEILING TILE	Gray/White Fibrous Heterogeneous	45% Cellulose 30% Min. Wool	25% Non-fibrous (other)	None Detected
B22C 041103136-0066	- 2X4 8 SQUARED PATTERN CEILING TILE	Gray Fibrous Heterogeneous	50% Cellulose 30% Min. Wool	20% Non-fibrous (other)	None Detected

Initial report from 02/15/2011 19:54:01

Analyst(s)

Daniel Sivco (14) *Gregory Mortka (51)* *Naadira Carter (1)* Stephen Siegel, CIH, Laboratory Manager
Glenn Brennan (56) *Garret Vliet (13)* or other approved signatory

EMSL maintains liability limited to the cost of analysis. This report relates only to the samples reported above and may not be reproduced, except in full, without written approval by EMSL. EMSL bears no responsibility for sample collection activities or analytical method limitations. Interpretation and use of test results are the responsibility of the client. This report must not be used by the client to claim product certification, approval or endorsement by NVLAP, NIST or any agency of the federal government. The test results contained within this report meet the requirements of NELAC unless otherwise specified. Samples received in good condition unless otherwise noted.
 Samples analyzed by EMSL Analytical, Inc. 200 Route 130 North, Cinnaminson NJ NVLAP Lab Code 101048-0, AIHA-LAP, LLC-IHLAP Lab 100194, NYS ELAP 10872, NJ DEP 03036



EMSL Analytical, Inc.
 200 Route 130 North, Cinnaminson, NJ 08077
 Phone: (800) 220-3675 Fax: (856) 786-5974 Email: wesimontasblab@EMSL.com

Attn: **Bruce M. Hackett, Sr.**
Abatement Professionals Corp.
590 County Road
Westbrook, ME 04092

Customer ID: ABAT52
 Customer PO:
 Received: 02/11/11 10:50 AM
 EMSL Order: 041103136
 EMSL Proj:
 Analysis Date: 2/15/2011

Fax: (207) 772-1203 Phone: (207) 773-1276
 Project: 443 CONGRESS 11-033

Test Report: Asbestos Analysis of Bulk Materials via EPA 600/R-93/116 Method using Polarized Light Microscopy

Sample	Description	Appearance	Non-Asbestos		Asbestos
			% Fibrous	% Non-Fibrous	% Type
B23A 041103136-0067	- RADIATOR MUDDED ELBOWS	Gray/Tan Fibrous Heterogeneous	25% 15%	Min. Wood Cellulose	60% Non-fibrous (other) None Detected
B23B 041103136-0068	- RADIATOR MUDDED ELBOWS	Gray/Tan Fibrous Heterogeneous	30% 5%	Min. Wood Cellulose	65% Non-fibrous (other) None Detected
B23C 041103136-0069	- RADIATOR MUDDED ELBOWS	Gray Fibrous Heterogeneous	30% 5%	Min. Wood Cellulose	65% Non-fibrous (other) None Detected
B24A 041103136-0070	BACK RIGHT CORNER HALL/BATH - LINO	Gray/Tan Fibrous Heterogeneous			80% Non-fibrous (other) 20% Chrysotile
B24B 041103136-0071	BACK RIGHT CORNER HALL/BATH - LINO				Stop Positive (Not Analyzed)
B24C 041103136-0072	BACK RIGHT CORNER HALL/BATH - LINO				Stop Positive (Not Analyzed)
B25A 041103136-0073	- FIBERGLASS RUN FITTING & ELBOWS	Gray Fibrous Heterogeneous	25% 15%	Min. Wood Cellulose	60% Non-fibrous (other) None Detected

Initial report from 02/15/2011 19:54:01

Analyst(s)

Daniel Sivco (14) Gregory Mortka (51) Naadira Carter (1) Stephen Siegel, CIH, Laboratory Manager
 Glenn Brennan (56) Garret Vliet (13) or other approved signatory

EMSL maintains liability limited to the cost of analysis. This report relates only to the samples reported above and may not be reproduced, except in full, without written approval by EMSL. EMSL bears no responsibility for sample collection activities or analytical method limitations. Interpretation and use of test results are the responsibility of the client. This report must not be used by the client to claim product certification, approval or endorsement by NVLAP, NIST or any agency of the federal government. The test results contained within this report meet the requirements of NELAC unless otherwise specified. Samples received in good condition unless otherwise noted.

Samples analyzed by EMSL Analytical, Inc. 200 Route 130 North, Cinnaminson NJ NVLAP Lab Code 101048-0, AIHA-LAP, LLC-IHLAP Lab 100194, NYS ELAP 10872, NJ DEP 03036



EMSL Analytical, Inc.
 200 Route 130 North, Cinnaminson, NJ 08077
 Phone: (800) 220-3675 Fax: (856) 786-5974 Email: westmontaslab@EMSL.com

Attn: **Bruce M. Hackett, Sr.**
Abatement Professionals Corp.
590 County Road
Westbrook, ME 04092

Customer ID: ABAT52
 Customer PO:
 Received: 02/11/11 10:50 AM
 EMSL Order: 041103136

Fax: (207) 772-1203 Phone: (207) 773-1276
 Project: 443 CONGRESS 11-033

EMSL Proj:
 Analysis Date: 2/15/2011

Test Report: Asbestos Analysis of Bulk Materials via EPA 600/R-93/116 Method using Polarized Light Microscopy

Sample	Description	Appearance	Non-Asbestos		Asbestos
			% Fibrous	% Non-Fibrous	% Type
B25B 041103136-0074	- FIBERGLASS RUN FITTING & ELBOWS	Gray Fibrous Heterogeneous	50% Cellulose 25% Min. Wood	25% Non-fibrous (other)	None Detected
B25C 041103136-0075	- FIBERGLASS RUN FITTING & ELBOWS	Tan Fibrous Heterogeneous	60% Cellulose 20% Min. Wood	20% Non-fibrous (other)	None Detected
B26A 041103136-0076	- OLD CEILING GLUE DOTS	Brown Non-Fibrous Heterogeneous	2% Fibrous (other)	98% Non-fibrous (other)	None Detected
			suggest TEM		
B26B 041103136-0077	- OLD CEILING GLUE DOTS	Brown Non-Fibrous Heterogeneous	2% Fibrous (other)	98% Non-fibrous (other)	None Detected
			suggest TEM		
B26C 041103136-0078	- OLD CEILING GLUE DOTS	Brown Non-Fibrous Heterogeneous	3% Fibrous (other)	97% Non-fibrous (other)	None Detected
B27A-Floor Tile 041103136-0079	- 9X9 VAT	Tan Non-Fibrous Heterogeneous		94% Non-fibrous (other)	6% Chrysotile

Initial report from 02/15/2011 19:54:01

Analyst(s)

Daniel Sivco (14) *Gregory Mortka (51)* *Naadira Carter (1)* Stephen Siegel, CIH, Laboratory Manager
Glenn Brennan (56) *Garret Vliet (13)* or other approved signatory

EMSL maintains liability limited to the cost of analysis. This report relates only to the samples reported above and may not be reproduced, except in full, without written approval by EMSL. EMSL bears no responsibility for sample collection activities or analytical method limitations. Interpretation and use of test results are the responsibility of the client. This report must not be used by the client to claim product certification, approval or endorsement by NVLAP, NIST or any agency of the federal government. The test results contained within this report meet the requirements of NELAC unless otherwise specified. Samples received in good condition unless otherwise noted.
 Samples analyzed by EMSL Analytical, Inc. 200 Route 130 North, Cinnaminson NJ NVLAP Lab Code 101048-0, AIHA-LAP, LLC-IHLAP Lab 100194, NYS ELAP 10872, NJ DEP 03036



EMSL Analytical, Inc.
 200 Route 130 North, Cinnaminson, NJ 08077
 Phone: (800) 220-3875 Fax: (856) 786-5974 Email: westmontasblab@EMSL.com

Attn: **Bruce M. Hackett, Sr.**
Abatement Professionals Corp.
590 County Road
Westbrook, ME 04092

Customer ID: ABAT52
 Customer PO:
 Received: 02/11/11 10:50 AM
 EMSL Order: 041103136
 EMSL Proj:
 Analysis Date: 2/15/2011

Fax: (207) 772-1203 Phone: (207) 773-1276
 Project: 443 CONGRESS 11-033

Test Report: Asbestos Analysis of Bulk Materials via EPA 600/R-93/116 Method using Polarized Light Microscopy

Sample	Description	Appearance	Non-Asbestos		Asbestos
			% Fibrous	% Non-Fibrous	% Type
B27A-Mastic 041103136-0079A	- 9X9 VAT				Analysis Cancelled
PRELIMINARY RESULT layered incorrectly					
B27B-Floor Tile 041103136-0080	- 9X9 VAT				Stop Positive (Not Analyzed)
B27B-Mastic 041103136-0080A	- 9X9 VAT				Analysis Cancelled
PRELIMINARY RESULT layered incorrectly					
B27C-Floor Tile 041103136-0081	- 9X9 VAT				Stop Positive (Not Analyzed)
B27C-Mastic 041103136-0081A	- 9X9 VAT				Analysis Cancelled
PRELIMINARY RESULT layered incorrectly					
B28A 041103136-0082	- UNDERLYING ADHESIVE	Black Non-Fibrous Homogeneous		100% Non-fibrous (other)	None Detected

Initial report from 02/15/2011 19:54:01

Analyst(s)

Daniel Sivco (14) Gregory Mortka (51) Naadira Carter (1) Stephen Siegel, CIH, Laboratory Manager
Glenn Brennan (56) Garret Vliet (13) or other approved signatory

EMSL maintains liability limited to the cost of analysis. This report relates only to the samples reported above and may not be reproduced, except in full, without written approval by EMSL. EMSL bears no responsibility for sample collection activities or analytical method limitations. Interpretation and use of test results are the responsibility of the client. This report must not be used by the client to claim product certification, approval or endorsement by NVLAP, NIST or any agency of the federal government. The test results contained within this report meet the requirements of NELAC unless otherwise specified. Samples received in good condition unless otherwise noted.

Samples analyzed by EMSL Analytical, Inc. 200 Route 130 North, Cinnaminson NJ NVLAP Lab Code 101048-0, AIHA-LAP, LLC-IHLAP Lab 100194, NYS ELAP 10872, NJ DEP 03036



EMSL Analytical, Inc.
 200 Route 130 North, Cinnaminson, NJ 08077
 Phone: (800) 220-3875 Fax: (856) 786-5974 Email: westmontasblab@EMSL.com

Attn: **Bruce M. Hackett, Sr.**
Abatement Professionals Corp.
590 County Road
Westbrook, ME 04092

Customer ID: ABAT52
 Customer PO:
 Received: 02/11/11 10:50 AM
 EMSL Order: 041103136
 EMSL Proj:
 Analysis Date: 2/15/2011

Fax: (207) 772-1203 Phone: (207) 773-1276
 Project: 443 CONGRESS 11-033

Test Report: Asbestos Analysis of Bulk Materials via EPA 600/R-93/116 Method using Polarized Light Microscopy

Sample	Description	Appearance	Non-Asbestos		Asbestos
			% Fibrous	% Non-Fibrous	% Type
B28B 041103136-0083	- UNDERLYING ADHESIVE	Black Non-Fibrous Homogeneous		100% Non-fibrous (other)	None Detected
B28C 041103136-0084	- UNDERLYING ADHESIVE	Black Non-Fibrous Homogeneous		100% Non-fibrous (other)	None Detected
B29A-Floor Tile 041103136-0085	HALLWAY/MECH ROOM - 9X9	Gray Non-Fibrous Heterogeneous		97% Non-fibrous (other)	3% Chrysotile
B29A-Mastic 041103136-0085A	HALLWAY/MECH ROOM - 9X9	Black Non-Fibrous Homogeneous		100% Non-fibrous (other)	None Detected
B29B-Floor Tile 041103136-0086	HALLWAY/MECH ROOM - 9X9				Stop Positive (Not Analyzed)
B29B-Mastic 041103136-0086A	HALLWAY/MECH ROOM - 9X9	Black Non-Fibrous Homogeneous		100% Non-fibrous (other)	None Detected
B29C-Floor Tile 041103136-0087	HALLWAY/MECH ROOM - 9X9				Stop Positive (Not Analyzed)

Initial report from 02/15/2011 19:54:01

Analyst(s)

Daniel Sivco (14) Gregory Mortka (51) Naadira Carter (1) Stephen Siegel, CIH, Laboratory Manager
 Glenn Brennan (56) Garret Vliet (13) or other approved signatory

EMSL maintains liability limited to the cost of analysis. This report relates only to the samples reported above and may not be reproduced, except in full, without written approval by EMSL. EMSL bears no responsibility for sample collection activities or analytical method limitations. Interpretation and use of test results are the responsibility of the client. This report must not be used by the client to claim product certification, approval or endorsement by NVLAP, NIST or any agency of the federal government. The test results contained within this report meet the requirements of NELAC unless otherwise specified. Samples received in good condition unless otherwise noted.

Samples analyzed by EMSL Analytical, Inc. 200 Route 130 North, Cinnaminson NJ NVLAP Lab Code 101048-0, AIHA-LAP, LLC-IHLAP Lab 100194, NYS ELAP 10872, NJ DEP 03036



EMSL Analytical, Inc.
 200 Route 130 North, Cinnaminson, NJ 08077
 Phone: (800) 220-3875 Fax: (856) 796-5974 Email: wasimontaslab@EMSL.com

Attn: **Bruce M. Hackett, Sr.**
Abatement Professionals Corp.
590 County Road
Westbrook, ME 04092

Customer ID: ABAT52
 Customer PO:
 Received: 02/11/11 10:50 AM
 EMSL Order: 041103136
 EMSL Proj:
 Analysis Date: 2/15/2011

Fax: (207) 772-1203 Phone: (207) 773-1276
 Project: 443 CONGRESS 11-033

Test Report: Asbestos Analysis of Bulk Materials via EPA 600/R-93/116 Method using Polarized Light Microscopy

Sample	Description	Appearance	Non-Asbestos		Asbestos
			% Fibrous	% Non-Fibrous	% Type
B29C-Mastic 041103136-0087A	HALLWAY/MECH ROOM - 9X9	Black Non-Fibrous Homogeneous		100% Non-fibrous (other)	None Detected
BBB-1 041103136-0088	- BLUE ROLLED LINO	Gray/Blue Fibrous Heterogeneous	20% Cellulose 5% Synthetic	75% Non-fibrous (other)	None Detected
BBB-2 041103136-0089	- BLUE ROLLED LINO	Gray/Blue Fibrous Heterogeneous	20% Cellulose 5% Synthetic	75% Non-fibrous (other)	None Detected
BBB-3 041103136-0090	- BLUE ROLLED LINO	Gray/Blue Fibrous Heterogeneous	20% Cellulose 5% Glass	75% Non-fibrous (other)	None Detected
B30A-Floor Tile 041103136-0091	- VINYL SHEET FLOORING	Red/Black Non-Fibrous Heterogeneous		100% Non-fibrous (other)	None Detected
B30A-Adhesive 041103136-0091A	- VINYL SHEET FLOORING	Yellow Non-Fibrous Homogeneous		100% Non-fibrous (other)	None Detected
B30B-Floor Tile 041103136-0092	- VINYL SHEET FLOORING	Red/Black Non-Fibrous Heterogeneous		100% Non-fibrous (other)	None Detected

Initial report from 02/15/2011 19:54:01

Analyst(s)

Daniel Sivco (14) Gregory Mortka (51) Naadira Carter (1) Stephen Siegel, CIH, Laboratory Manager or other approved signatory
Glenn Brennan (56) Garret Vliet (13)

EMSL maintains liability limited to the cost of analysis. This report relates only to the samples reported above and may not be reproduced, except in full, without written approval by EMSL. EMSL bears no responsibility for sample collection activities or analytical method limitations. Interpretation and use of test results are the responsibility of the client. This report must not be used by the client to claim product certification, approval or endorsement by NVLAP, NIST or any agency of the federal government. The test results contained within this report meet the requirements of NELAC unless otherwise specified. Samples received in good condition unless otherwise noted.
 Samples analyzed by EMSL Analytical, Inc. 200 Route 130 North, Cinnaminson NJ NVLAP Lab Code 101048-0, AIHA-LAP, LLC-HLAP Lab 100194, NYS ELAP 10872, NJ DEP 03036



EMSL Analytical, Inc.
 200 Route 130 North, Cinnaminson, NJ 08077
 Phone: (800) 220-3875 Fax: (856) 786-5974 Email: westmontaslab@EMSL.com

Attn: **Bruce M. Hackett, Sr.**
Abatement Professionals Corp.
590 County Road
Westbrook, ME 04092

Customer ID: ABAT52
 Customer PO:
 Received: 02/11/11 10:50 AM
 EMSL Order: 041103136
 EMSL Proj:
 Analysis Date: 2/15/2011

Fax: (207) 772-1203 Phone: (207) 773-1276
 Project: **443 CONGRESS 11-033**

Test Report: Asbestos Analysis of Bulk Materials via EPA 600/R-93/116 Method using Polarized Light Microscopy

Sample	Description	Appearance	Non-Asbestos		Asbestos
			% Fibrous	% Non-Fibrous	% Type
B30B-Adhesive 041103136-0092A	- VINYL SHEET FLOORING	Yellow Non-Fibrous Homogeneous		100% Non-fibrous (other)	None Detected
B30C-Floor Tile 041103136-0093	- VINYL SHEET FLOORING	Red/Black Non-Fibrous Heterogeneous		100% Non-fibrous (other)	None Detected
B30C-Adhesive 041103136-0093A	- VINYL SHEET FLOORING	Yellow Non-Fibrous Heterogeneous		100% Non-fibrous (other)	None Detected
B31A-Floor Tile 041103136-0094	KITCHEN - FLOOR TILE 12X12	Tan/Yellow Non-Fibrous Homogeneous		90% Non-fibrous (other)	10% Chrysotile
B31A-Adhesive 041103136-0094A	KITCHEN - FLOOR TILE 12X12	Yellow Non-Fibrous Homogeneous		100% Non-fibrous (other)	None Detected
B31B-Floor Tile 041103136-0095	KITCHEN - FLOOR TILE 12X12				Stop Positive (Not Analyzed)
B31B-Adhesive 041103136-0095A	KITCHEN - FLOOR TILE 12X12	Yellow Non-Fibrous Homogeneous		100% Non-fibrous (other)	None Detected

Initial report from 02/15/2011 19:54:01

Analyst(s)

Daniel Sivco (14) *Gregory Mortka (51)* *Naadira Carter (1)* Stephen Siegel, CIH, Laboratory Manager or other approved signatory
Glenn Brennan (56) *Garret Vliet (13)*

EMSL maintains liability limited to the cost of analysis. This report relates only to the samples reported above and may not be reproduced, except in full, without written approval by EMSL. EMSL bears no responsibility for sample collection activities or analytical method limitations. Interpretation and use of test results are the responsibility of the client. This report must not be used by the client to claim product certification, approval or endorsement by NVLAP, NIST or any agency of the federal government. The test results contained within this report meet the requirements of NELAC unless otherwise specified. Samples received in good condition unless otherwise noted.
 Samples analyzed by EMSL Analytical, Inc. 200 Route 130 North, Cinnaminson NJ NVLAP Lab Code 101048-0, AIHA-LAP, LLC-IHLAP Lab 100194, NYS ELAP 10872, NJ DEP 03036



EMSL Analytical, Inc.
 200 Route 130 North, Cinnaminson, NJ 08077
 Phone: (800) 220-3875 Fax: (856) 786-5974 Email: westmontaslab@EMSL.com

Attn: **Bruce M. Hackett, Sr.**
Abatement Professionals Corp.
590 County Road
Westbrook, ME 04092

Customer ID: ABAT52
 Customer PO:
 Received: 02/11/11 10:50 AM
 EMSL Order: 041103136
 EMSL Proj:
 Analysis Date: 2/15/2011

Fax: (207) 772-1203 Phone: (207) 773-1276
 Project: **443 CONGRESS 11-033**

Test Report: Asbestos Analysis of Bulk Materials via EPA 600/R-93/116 Method using Polarized Light Microscopy

Sample	Description	Appearance	Non-Asbestos		Asbestos
			% Fibrous	% Non-Fibrous	% Type
B31C-Floor Tile 041103136-0096	KITCHEN - FLOOR TILE 12X12				Stop Positive (Not Analyzed)
B31C-Adhesive 041103136-0096A	KITCHEN - FLOOR TILE 12X12	Yellow Non-Fibrous Heterogeneous		100% Non-fibrous (other)	None Detected
B32A 041103136-0097	KITCHEN - UNDERLYING ADHESIVE	Black Non-Fibrous Homogeneous	3% Cellulose	97% Non-fibrous (other)	None Detected
B32B 041103136-0098	KITCHEN - UNDERLYING ADHESIVE	Black Non-Fibrous Homogeneous	2% Cellulose	98% Non-fibrous (other)	None Detected
B32C 041103136-0099	KITCHEN - UNDERLYING ADHESIVE	Black Non-Fibrous Heterogeneous		100% Non-fibrous (other)	None Detected
B33A-Floor Tile 041103136-0100	MECH RM TOO - 9X9 VAT	Tan Non-Fibrous Heterogeneous		88% Non-fibrous (other)	12% Chrysotile
B33A-Mastic 041103136-0100A	MECH RM TOO - 9X9 VAT	Black Non-Fibrous Homogeneous		100% Non-fibrous (other)	None Detected

Initial report from 02/15/2011 19:54:01

Analyst(s)

Daniel Sivco (14) *Gregory Mortka (51)* *Naadira Carter (1)* Stephen Siegel, CIH, Laboratory Manager
Glenn Brennan (56) *Garret Vliet (13)* or other approved signatory

EMSL maintains liability limited to the cost of analysis. This report relates only to the samples reported above and may not be reproduced, except in full, without written approval by EMSL. EMSL bears no responsibility for sample collection activities or analytical method limitations. Interpretation and use of test results are the responsibility of the client. This report must not be used by the client to claim product certification, approval or endorsement by NVLAP, NIST or any agency of the federal government. The test results contained within this report meet the requirements of NELAC unless otherwise specified. Samples received in good condition unless otherwise noted.

Samples analyzed by EMSL Analytical, Inc. 200 Route 130 North, Cinnaminson NJ NVLAP Lab Code 101048-0, AIHA-LAP, LLC-IHLAP Lab 100194, NYS ELAP 10872, NJ DEP 03036



EMSL Analytical, Inc.
 200 Route 130 North, Cinnaminson, NJ 08077
 Phone: (800) 220-3675 Fax: (856) 786-5974 Email: wesimontaslab@EMSL.com

Attn: **Bruce M. Hackett, Sr.**
Abatement Professionals Corp.
590 County Road
Westbrook, ME 04092

Customer ID: ABAT52
 Customer PO:
 Received: 02/11/11 10:50 AM
 EMSL Order: 041103136
 EMSL Proj:
 Analysis Date: 2/15/2011

Fax: (207) 772-1203 Phone: (207) 773-1276
 Project: **443 CONGRESS 11-033**

Test Report: Asbestos Analysis of Bulk Materials via EPA 600/R-93/116 Method using Polarized Light Microscopy

Sample	Description	Appearance	Non-Asbestos		Asbestos
			% Fibrous	% Non-Fibrous	% Type
B33A-Adhesive 041103136-0100B	MECH RM TOO - 9X9 VAT	Yellow Non-Fibrous Homogeneous		100% Non-fibrous (other)	None Detected
B33B-Floor Tile 041103136-0101	MECH RM TOO - 9X9 VAT				Stop Positive (Not Analyzed)
B33B-Mastic 041103136-0101A	MECH RM TOO - 9X9 VAT	Black Non-Fibrous Homogeneous		100% Non-fibrous (other)	None Detected
B33B-Adhesive 041103136-0101B	MECH RM TOO - 9X9 VAT	Non-Fibrous Heterogeneous		100% Non-fibrous (other)	None Detected
B33C-Floor Tile 041103136-0102	MECH RM TOO - 9X9 VAT				Stop Positive (Not Analyzed)
B33C-Mastic 041103136-0102A	MECH RM TOO - 9X9 VAT	Black Non-Fibrous Heterogeneous		100% Non-fibrous (other)	None Detected
B33C-Adhesive 041103136-0102B	MECH RM TOO - 9X9 VAT	Yellow Non-Fibrous Heterogeneous		100% Non-fibrous (other)	None Detected

Initial report from 02/15/2011 19:54:01

Analyst(s)

Daniel Sivco (14) Gregory Mortka (51) Naadira Carter (1) Stephen Siegel, CIH, Laboratory Manager
Glenn Brennan (56) Garret Vliet (13) or other approved signatory

EMSL maintains liability limited to the cost of analysis. This report relates only to the samples reported above and may not be reproduced, except in full, without written approval by EMSL. EMSL bears no responsibility for sample collection activities or analytical method limitations. Interpretation and use of test results are the responsibility of the client. This report must not be used by the client to claim product certification, approval or endorsement by NVLAP, NIST or any agency of the federal government. The test results contained within this report meet the requirements of NELAC unless otherwise specified. Samples received in good condition unless otherwise noted.
 Samples analyzed by EMSL Analytical, Inc. 200 Route 130 North, Cinnaminson NJ NVLAP Lab Code 101048-0, AIHA-LAP, LLC-IHLAP Lab 100194, NYS ELAP 10872, NJ DEP 03036



EMSL Analytical, Inc.
 200 Route 130 North, Cinnaminson, NJ 08077
 Phone: (800) 220-3675 Fax: (856) 786-5974 Email: wesimontaslab@EMSL.com

Attn: **Bruce M. Hackett, Sr.**
Abatement Professionals Corp.
590 County Road
Westbrook, ME 04092

Customer ID: ABAT52
 Customer PO:
 Received: 02/11/11 10:50 AM
 EMSL Order: 041103136

Fax: (207) 772-1203 Phone: (207) 773-1276
 Project: 443 CONGRESS 11-033

EMSL Proj:
 Analysis Date: 2/15/2011

Test Report: Asbestos Analysis of Bulk Materials via EPA 600/R-93/116 Method using Polarized Light Microscopy

Sample	Description	Appearance	Non-Asbestos		Asbestos
			% Fibrous	% Non-Fibrous	% Type
B34A 041103136-0103	BACK HALL/BATH - 12X12	White Non-Fibrous Heterogeneous		100% Non-fibrous (other)	None Detected
B34B 041103136-0104	BACK HALL/BATH - 12X12	White Non-Fibrous Heterogeneous		100% Non-fibrous (other)	None Detected
B34C 041103136-0105	BACK HALL/BATH - 12X12	White Non-Fibrous Homogeneous		100% Non-fibrous (other)	None Detected
B35A 041103136-0106	- 12X12 FLOOR TILE	Gray Non-Fibrous Heterogeneous		100% Non-fibrous (other)	None Detected
			suggest TEM		
B35B 041103136-0107	- 12X12 FLOOR TILE	Gray Non-Fibrous Heterogeneous		100% Non-fibrous (other)	None Detected
			suggest TEM		
B35C 041103136-0108	- 12X12 FLOOR TILE	Gray Non-Fibrous Homogeneous		100% Non-fibrous (other)	None Detected
B36A 041103136-0109	KITCHENETTE - 12X12 FLOOR TILE	Gray Non-Fibrous Heterogeneous		98% Non-fibrous (other)	2% Chrysotile

Initial report from 02/15/2011 19:54:01

Analyst(s)

Daniel Sivco (14) Gregory Mortka (51) Naadira Carter (1) Stephen Siegel, CIH, Laboratory Manager or other approved signatory
Glenn Brennan (56) Garret Vliet (13)

EMSL maintains liability limited to the cost of analysis. This report relates only to the samples reported above and may not be reproduced, except in full, without written approval by EMSL. EMSL bears no responsibility for sample collection activities or analytical method limitations. Interpretation and use of test results are the responsibility of the client. This report must not be used by the client to claim product certification, approval or endorsement by NVLAP, NIST or any agency of the federal government. The test results contained within this report meet the requirements of NELAC unless otherwise specified. Samples received in good condition unless otherwise noted.
 Samples analyzed by EMSL Analytical, Inc. 200 Route 130 North, Cinnaminson NJ NVLAP Lab Code 101048-0, AIHA-LAP, LLC-IHLAP Lab 100194, NYS ELAP 10872, NJ DEP 03036



EMSL Analytical, Inc.
 200 Route 130 North, Cinnaminson, NJ 08077
 Phone: (800) 220-3875 Fax: (856) 786-5974 Email: westmontaslab@EMSL.com

Attn: **Bruce M. Hackett, Sr.**
Abatement Professionals Corp.
590 County Road
Westbrook, ME 04092

Customer ID: ABAT52
 Customer PO:
 Received: 02/11/11 10:50 AM
 EMSL Order: 041103136
 EMSL Proj:
 Analysis Date: 2/15/2011

Fax: (207) 772-1203 Phone: (207) 773-1276
 Project: 443 CONGRESS 11-033

Test Report: Asbestos Analysis of Bulk Materials via EPA 600/R-93/116 Method using Polarized Light Microscopy

Sample	Description	Appearance	Non-Asbestos		Asbestos
			% Fibrous	% Non-Fibrous	% Type
B36B 041103136-0110	KITCHENETTE - 12X12 FLOOR TILE				Stop Positive (Not Analyzed)
B36C 041103136-0111	KITCHENETTE - 12X12 FLOOR TILE				Stop Positive (Not Analyzed)
B37A 041103136-0112	- 2X2 TEXTURED RED BACK CEILING TILE	Gray/White/Rose Non-Fibrous Heterogeneous	60% Cellulose 25% Min. Wood	15% Non-fibrous (other)	None Detected
suggest TEM					
B37B 041103136-0113	- 2X2 TEXTURED RED BACK CEILING TILE	Gray/White/Rose Fibrous Heterogeneous	60% Cellulose 30% Min. Wood	10% Non-fibrous (other)	None Detected
suggest TEM					
B37C 041103136-0114	- 2X2 TEXTURED RED BACK CEILING TILE	Gray/White Fibrous Homogeneous	40% Cellulose 35% Min. Wood	25% Non-fibrous (other)	None Detected
B38A 041103136-0115	KITCHENETTE - MASTIC	Black Non-Fibrous Homogeneous	3% Cellulose	97% Non-fibrous (other)	None Detected

Initial report from 02/15/2011 19:54:01

Analyst(s)

Daniel Sivco (14) Gregory Mortka (51) Naadira Carter (1) Stephen Siegel, CIH, Laboratory Manager
Glenn Brennan (56) Garret Vliet (13) or other approved signatory

EMSL maintains liability limited to the cost of analysis. This report relates only to the samples reported above and may not be reproduced, except in full, without written approval by EMSL. EMSL bears no responsibility for sample collection activities or analytical method limitations. Interpretation and use of test results are the responsibility of the client. This report must not be used by the client to claim product certification, approval or endorsement by NVLAP, NIST or any agency of the federal government. The test results contained within this report meet the requirements of NELAC unless otherwise specified. Samples received in good condition unless otherwise noted.
 Samples analyzed by EMSL Analytical, Inc. 200 Route 130 North, Cinnaminson NJ NVLAP Lab Code 101048-0, AIHA-LAP, LLC-IHLAP Lab 100194, NYS ELAP 10872, NJ DEP 03036



EMSL Analytical, Inc.
 200 Route 130 North, Cinnaminson, NJ 08077
 Phone: (800) 220-3875 Fax: (856) 786-5974 Email: wesimontaslab@EMSL.com

Attn: **Bruce M. Hackett, Sr.**
Abatement Professionals Corp.
590 County Road
Westbrook, ME 04092

Customer ID: ABAT52
 Customer PO:
 Received: 02/11/11 10:50 AM
 EMSL Order: 041103136
 EMSL Proj:
 Analysis Date: 2/15/2011

Fax: (207) 772-1203 Phone: (207) 773-1276
 Project: 443 CONGRESS 11-033

Test Report: Asbestos Analysis of Bulk Materials via EPA 600/R-93/116 Method using Polarized Light Microscopy

Sample	Description	Appearance	Non-Asbestos		Asbestos
			% Fibrous	% Non-Fibrous	% Type
B38B 041103136-0116	KITCHENETTE - MASTIC	Black Non-Fibrous Homogeneous	3% Cellulose	97% Non-fibrous (other)	None Detected
B38C 041103136-0117	KITCHENETTE - MASTIC	Black Fibrous Homogeneous	4% Cellulose	96% Non-fibrous (other)	None Detected
B39A 041103136-0118	HALLWAY - 12X12 CEILING TILES	Gray Fibrous Heterogeneous	98% Min. Wood	2% Non-fibrous (other)	None Detected
B39B 041103136-0119	HALLWAY - 12X12 CEILING TILES	Gray/White Fibrous Heterogeneous	95% Min. Wood	5% Non-fibrous (other)	None Detected
B39C 041103136-0120	HALLWAY - 12X12 CEILING TILES	Gray/White Fibrous Homogeneous	80% Min. Wood	20% Non-fibrous (other)	None Detected
B40A 041103136-0121	- MIDDLE LEFT SECTION 12X12 CEILING TILE	Gray/White Fibrous Heterogeneous	95% Min. Wood	5% Non-fibrous (other)	None Detected
B40B 041103136-0122	- MIDDLE LEFT SECTION 12X12 CEILING TILE	Gray/White Fibrous Heterogeneous	95% Min. Wood	5% Non-fibrous (other)	None Detected

Initial report from 02/15/2011 19:54:01

Analyst(s)

Daniel Sivco (14) Gregory Mortka (51) Naadira Carter (1) Stephen Siegel, CIH, Laboratory Manager
 Glenn Brennan (56) Garret Vliet (13) or other approved signatory

EMSL maintains liability limited to the cost of analysis. This report relates only to the samples reported above and may not be reproduced, except in full, without written approval by EMSL. EMSL bears no responsibility for sample collection activities or analytical method limitations. Interpretation and use of test results are the responsibility of the client. This report must not be used by the client to claim product certification, approval or endorsement by NVLAP, NIST or any agency of the federal government. The test results contained within this report meet the requirements of NELAC unless otherwise specified. Samples received in good condition unless otherwise noted.
 Samples analyzed by EMSL Analytical, Inc. 200 Route 130 North, Cinnaminson NJ NVLAP Lab Code 101048-0, AIHA-LAP, LLC-IHLAP Lab 100194, NYS ELAP 10872, NJ DEP 03036



EMSL Analytical, Inc.
 200 Route 130 North, Cinnaminson, NJ 08077
 Phone: (800) 220-3875 Fax: (856) 786-5974 Email: westmontasblab@EMSL.com

Attn: **Bruce M. Hackett, Sr.**
Abatement Professionals Corp.
590 County Road
Westbrook, ME 04092

Customer ID: ABAT52
 Customer PO:
 Received: 02/11/11 10:50 AM
 EMSL Order: 041103136

Fax: (207) 772-1203 Phone: (207) 773-1276
 Project: 443 CONGRESS 11-033

EMSL Proj:
 Analysis Date: 2/15/2011

Test Report: Asbestos Analysis of Bulk Materials via EPA 600/R-93/116 Method using Polarized Light Microscopy

Sample	Description	Appearance	Non-Asbestos		Asbestos
			% Fibrous	% Non-Fibrous	% Type
B40C 041103136-0123	- MIDDLE LEFT SECTION 12X12 CEILING TILE	Gray/White Fibrous Homogeneous	85% Min. Wool	15% Non-fibrous (other)	None Detected
B41A 041103136-0124	- 9X9 GRAY PAINTED TILE	Brown/Gray Fibrous Heterogeneous		95% Non-fibrous (other)	5% Chrysotile
B41B 041103136-0125	- 9X9 GRAY PAINTED TILE				Stop Positive (Not Analyzed)
B41C 041103136-0126	- 9X9 GRAY PAINTED TILE				Stop Positive (Not Analyzed)
B42A 041103136-0127	- 12X12 WORM HOLE CEILING TILES	Non-Fibrous Heterogeneous	55% Cellulose 30% Min. Wool	15% Non-fibrous (other)	None Detected
B42B 041103136-0128	- 12X12 WORM HOLE CEILING TILES	Gray/White Fibrous Heterogeneous	55% Cellulose 30% Min. Wool	15% Non-fibrous (other)	None Detected
B42C 041103136-0129	- 12X12 WORM HOLE CEILING TILES	Tan/White Fibrous Homogeneous	50% Cellulose 25% Min. Wool	25% Non-fibrous (other)	None Detected

Initial report from 02/15/2011 19:54:01

Analyst(s)

Daniel Sivco (14) *Gregory Mortka (51)* *Naadira Carter (1)* Stephen Siegel, CIH, Laboratory Manager
Glenn Brennan (56) *Garret Vliet (13)* or other approved signatory

EMSL maintains liability limited to the cost of analysis. This report relates only to the samples reported above and may not be reproduced, except in full, without written approval by EMSL. EMSL bears no responsibility for sample collection activities or analytical method limitations. Interpretation and use of test results are the responsibility of the client. This report must not be used by the client to claim product certification, approval or endorsement by NVLAP, NIST or any agency of the federal government. The test results contained within this report meet the requirements of NELAC unless otherwise specified. Samples received in good condition unless otherwise noted.

Samples analyzed by EMSL Analytical, Inc. 200 Route 130 North, Cinnaminson NJ NVLAP Lab Code 101048-0, AIHA-LAP, LLC-IHLAP Lab 100194, NYS ELAP 10872, NJ DEP 03036



EMSL Analytical, Inc.
 200 Route 130 North, Cinnaminson, NJ 08077
 Phone: (800) 220-3875 Fax: (856) 796-5974 Email: westmontaslab@EMSL.com

Attn: **Bruce M. Hackett, Sr.**
Abatement Professionals Corp.
590 County Road
Westbrook, ME 04092

Customer ID: ABAT52
 Customer PO:
 Received: 02/11/11 10:50 AM
 EMSL Order: 041103136
 EMSL Proj:
 Analysis Date: 2/15/2011

Fax: (207) 772-1203 Phone: (207) 773-1276
 Project: **443 CONGRESS 11-033**

Test Report: Asbestos Analysis of Bulk Materials via EPA 600/R-93/116 Method using Polarized Light Microscopy

Sample	Description	Appearance	Non-Asbestos		Asbestos
			% Fibrous	% Non-Fibrous	% Type
B43A 041103136-0130	KITCHEN/MECH - TSI/ELBOWS	White Fibrous Heterogeneous		88% Non-fibrous (other)	12% Amosite
B43B 041103136-0131	KITCHEN/MECH - TSI/ELBOWS				Stop Positive (Not Analyzed)
B43C 041103136-0132	KITCHEN/MECH - TSI/ELBOWS				Stop Positive (Not Analyzed)
B44A 041103136-0133	BASEMENT - 9X9 BROWN	Tan Non-Fibrous Heterogeneous		98% Non-fibrous (other)	2% Chrysotile
suggest TEM					
B44B 041103136-0134	BASEMENT - 9X9 BROWN				Stop Positive (Not Analyzed)
B44C 041103136-0135	BASEMENT - 9X9 BROWN				Stop Positive (Not Analyzed)
B45A 041103136-0136	BASEMENT - 9X9 WHITE	Brown Non-Fibrous Heterogeneous		96% Non-fibrous (other)	4% Chrysotile

Initial report from 02/15/2011 19:54:01

Analyst(s)

Daniel Sivco (14) *Gregory Mortka (51)* *Naadira Carter (1)* Stephen Siegel, CIH, Laboratory Manager
Glenn Brennan (56) *Garret Vliet (13)* or other approved signatory

EMSL maintains liability limited to the cost of analysis. This report relates only to the samples reported above and may not be reproduced, except in full, without written approval by EMSL. EMSL bears no responsibility for sample collection activities or analytical method limitations. Interpretation and use of test results are the responsibility of the client. This report must not be used by the client to claim product certification, approval or endorsement by NVLAP, NIST or any agency of the federal government. The test results contained within this report meet the requirements of NELAC unless otherwise specified. Samples received in good condition unless otherwise noted.
 Samples analyzed by EMSL Analytical, Inc. 200 Route 130 North, Cinnaminson NJ NVLAP Lab Code 101048-0, AIHA-LAP, LLC-IHLAP Lab 100194, NYS ELAP 10872, NJ DEP 03036



EMSL Analytical, Inc.
 200 Route 130 North, Cinnaminson, NJ 08077
 Phone: (800) 220-3675 Fax: (856) 786-5974 Email: wesimontaslab@EMSL.com

Attn: **Bruce M. Hackett, Sr.**
Abatement Professionals Corp.
590 County Road
Westbrook, ME 04092

Customer ID: ABAT52
 Customer PO:
 Received: 02/11/11 10:50 AM
 EMSL Order: 041103136
 EMSL Proj:
 Analysis Date: 2/15/2011

Fax: (207) 772-1203 Phone: (207) 773-1276
 Project: 443 CONGRESS 11-033

Test Report: Asbestos Analysis of Bulk Materials via EPA 600/R-93/116 Method using Polarized Light Microscopy

Sample	Description	Appearance	Non-Asbestos		Asbestos
			% Fibrous	% Non-Fibrous	% Type
B45B 041103136-0137	BASEMENT - 9X9 WHITE				Stop Positive (Not Analyzed)
B45C 041103136-0138	BASEMENT - 9X9 WHITE				Stop Positive (Not Analyzed)
B46A-VAT 041103136-0139	MECH - VAT	Gray Non-Fibrous Heterogeneous		96% Non-fibrous (other)	2% Chrysotile 2% Anthophyllite
B46A-MASTIC 041103136-0139A	MECH - MASTIC	Black Non-Fibrous Homogeneous		100% Non-fibrous (other)	None Detected
B46B-VAT 041103136-0140	MECH - VAT				Stop Positive (Not Analyzed)
B46B-MASTIC 041103136-0140A	MECH - MASTIC	Black Non-Fibrous Homogeneous		100% Non-fibrous (other)	None Detected
B46C-VAT 041103136-0141	MECH - VAT				Stop Positive (Not Analyzed)

Initial report from 02/15/2011 19:54:01

Analyst(s)

Daniel Sirco (14) Gregory Mortka (51) Naadira Carter (1) Stephen Siegel, CIH, Laboratory Manager
 Glenn Brennan (56) Garret Vliet (13) or other approved signatory

EMSL maintains liability limited to the cost of analysis. This report relates only to the samples reported above and may not be reproduced, except in full, without written approval by EMSL. EMSL bears no responsibility for sample collection activities or analytical method limitations. Interpretation and use of test results are the responsibility of the client. This report must not be used by the client to claim product certification, approval or endorsement by NVLAP, NIST or any agency of the federal government. The test results contained within this report meet the requirements of NELAC unless otherwise specified. Samples received in good condition unless otherwise noted.
 Samples analyzed by EMSL Analytical, Inc. 200 Route 130 North, Cinnaminson NJ NVLAP Lab Code 101048-0, AIHA-LAP, LLC-HLAP Lab 100194, NYS ELAP 10872, NJ DEP 03036



EMSL Analytical, Inc.
 200 Route 130 North, Cinnaminson, NJ 08077
 Phone: (800) 220-3675 Fax: (856) 786-5974 Email: westmontaslab@EMSL.com

Attn: **Bruce M. Hackett, Sr.**
Abatement Professionals Corp.
590 County Road
Westbrook, ME 04092

Customer ID: ABAT52
 Customer PO:
 Received: 02/11/11 10:50 AM
 EMSL Order: 041103136

Fax: (207) 772-1203 Phone: (207) 773-1276
 Project: 443 CONGRESS 11-033

EMSL Proj:
 Analysis Date: 2/15/2011

Test Report: Asbestos Analysis of Bulk Materials via EPA 600/R-93/116 Method using Polarized Light Microscopy

Sample	Description	Appearance	Non-Asbestos		Asbestos
			% Fibrous	% Non-Fibrous	% Type
B46C-MASTIC 041103136-0141A	MECH - MASTIC	Black Fibrous Homogeneous	2% Cellulose	98% Non-fibrous (other)	None Detected
B47A 041103136-0142	- WALL/CEILING PLASTER TOP COAT	White Non-Fibrous Heterogeneous		100% Non-fibrous (other)	None Detected
B47B 041103136-0143	- WALL/CEILING PLASTER TOP COAT	White Non-Fibrous Heterogeneous		100% Non-fibrous (other)	None Detected
B47C 041103136-0144	- WALL/CEILING PLASTER TOP COAT	White Non-Fibrous Homogeneous		100% Non-fibrous (other)	None Detected
B48A 041103136-0145	- WALL/CEILING PLASTER BROWN COAT	Gray Non-Fibrous Heterogeneous		100% Non-fibrous (other)	None Detected
B48B 041103136-0146	- WALL/CEILING PLASTER BROWN COAT	Gray Non-Fibrous Heterogeneous		100% Non-fibrous (other)	None Detected
B48C 041103136-0147	- WALL/CEILING PLASTER BROWN COAT	Gray Non-Fibrous Homogeneous		100% Non-fibrous (other)	None Detected

Initial report from 02/15/2011 19:54:01

Analyst(s)

Daniel Sivco (14) Gregory Mortka (51) Naadira Carter (1) Stephen Siegel, CIH, Laboratory Manager
Glenn Brennan (56) Garret Vliet (13) or other approved signatory

EMSL maintains liability limited to the cost of analysis. This report relates only to the samples reported above and may not be reproduced, except in full, without written approval by EMSL. EMSL bears no responsibility for sample collection activities or analytical method limitations. Interpretation and use of test results are the responsibility of the client. This report must not be used by the client to claim product certification, approval or endorsement by NVLAP, NIST or any agency of the federal government. The test results contained within this report meet the requirements of NELAC unless otherwise specified. Samples received in good condition unless otherwise noted.

Samples analyzed by EMSL Analytical, Inc. 200 Route 130 North, Cinnaminson NJ NVLAP Lab Code 101048-0, AIHA-LAP, LLC-HLAP Lab 100194, NYS ELAP 10872, NJ DEP 03036



EMSL Analytical, Inc.
 200 Route 130 North, Cinnaminson, NJ 08077
 Phone: (800) 220-3875 Fax: (856) 786-5974 Email: westmontaslab@EMSL.com

Attn: **Bruce M. Hackett, Sr.**
Abatement Professionals Corp.
590 County Road
Westbrook, ME 04092

Customer ID: ABAT52
 Customer PO:
 Received: 02/11/11 10:50 AM
 EMSL Order: 041103136
 EMSL Proj:
 Analysis Date: 2/15/2011

Fax: (207) 772-1203 Phone: (207) 773-1276
 Project: 443 CONGRESS 11-033

Test Report: Asbestos Analysis of Bulk Materials via EPA 600/R-93/116 Method using Polarized Light Microscopy

Sample	Description	Appearance	Non-Asbestos		Asbestos
			% Fibrous	% Non-Fibrous	% Type
B49A 041103136-0148	- WALL/CEILING PLASTER	Gray Non-Fibrous Heterogeneous		100% Non-fibrous (other)	None Detected
B49B 041103136-0149	- WALL/CEILING PLASTER	Gray Fibrous Heterogeneous	1% Hair	99% Non-fibrous (other)	None Detected
B49C 041103136-0150	- WALL/CEILING PLASTER	Gray Non-Fibrous Homogeneous		100% Non-fibrous (other)	None Detected
B50A 041103136-0151	- PREVIOUS CEILING GLUE DOTS	Brown Fibrous Heterogeneous	30% Cellulose	70% Non-fibrous (other)	None Detected
B50B 041103136-0152	- PREVIOUS CEILING GLUE DOTS	Brown Fibrous Heterogeneous	45% Cellulose	55% Non-fibrous (other)	None Detected
B50C 041103136-0153	- PREVIOUS CEILING GLUE DOTS	Brown/Gray Non-Fibrous Homogeneous	15% Cellulose	85% Non-fibrous (other)	None Detected
B51A 041103136-0154	- WINDOW GLAZING/CAULKING	Gray Non-Fibrous Heterogeneous		100% Non-fibrous (other)	None Detected

Initial report from 02/15/2011 19:54:01

Analyst(s)

Daniel Sivco (14) Gregory Mortka (51) Naadira Carter (1) Stephen Siegel, CIH, Laboratory Manager
Glenn Brennan (56) Garret Vliet (13) or other approved signatory

EMSL maintains liability limited to the cost of analysis. This report relates only to the samples reported above and may not be reproduced, except in full, without written approval by EMSL. EMSL bears no responsibility for sample collection activities or analytical method limitations. Interpretation and use of test results are the responsibility of the client. This report must not be used by the client to claim product certification, approval or endorsement by NVLAP, NIST or any agency of the federal government. The test results contained within this report meet the requirements of NELAC unless otherwise specified. Samples received in good condition unless otherwise noted.

Samples analyzed by EMSL Analytical, Inc. 200 Route 130 North, Cinnaminson NJ NVLAP Lab Code 101048-0, AIHA-LAP, LLC-IHLAP Lab 100194, NYS ELAP 10872, NJ DEP 03036



EMSL Analytical, Inc.
 200 Route 130 North, Cinnaminson, NJ 08077
 Phone: (800) 220-3875 Fax: (856) 786-5974 Email: westmontaslab@EMSL.com

Attn: **Bruce M. Hackett, Sr.**
Abatement Professionals Corp.
590 County Road
Westbrook, ME 04092

Customer ID: ABAT52
 Customer PO:
 Received: 02/11/11 10:50 AM
 EMSL Order: 041103136
 EMSL Proj:
 Analysis Date: 2/15/2011

Fax: (207) 772-1203 Phone: (207) 773-1276
 Project: 443 CONGRESS 11-033

Test Report: Asbestos Analysis of Bulk Materials via EPA 600/R-93/116 Method using Polarized Light Microscopy

Sample	Description	Appearance	Non-Asbestos		Asbestos
			% Fibrous	% Non-Fibrous	% Type
B51B 041103136-0155	- WINDOW GLAZING/CAULKING	Gray Non-Fibrous Heterogeneous		100% Non-fibrous (other)	None Detected
B51C 041103136-0156	- WINDOW GLAZING/CAULKING	Gray Non-Fibrous Homogeneous		100% Non-fibrous (other)	None Detected

CERTIFICATION # BA-0124/BA-0122/BA-0125

Initial report from 02/15/2011 19:54:01

Analyst(s)

Daniel Sivco (14) *Gregory Mortka (51)* *Naadira Carter (1)* Stephen Siegel, CIH, Laboratory Manager
Glenn Brennan (56) *Garret Vliet (13)* or other approved signatory

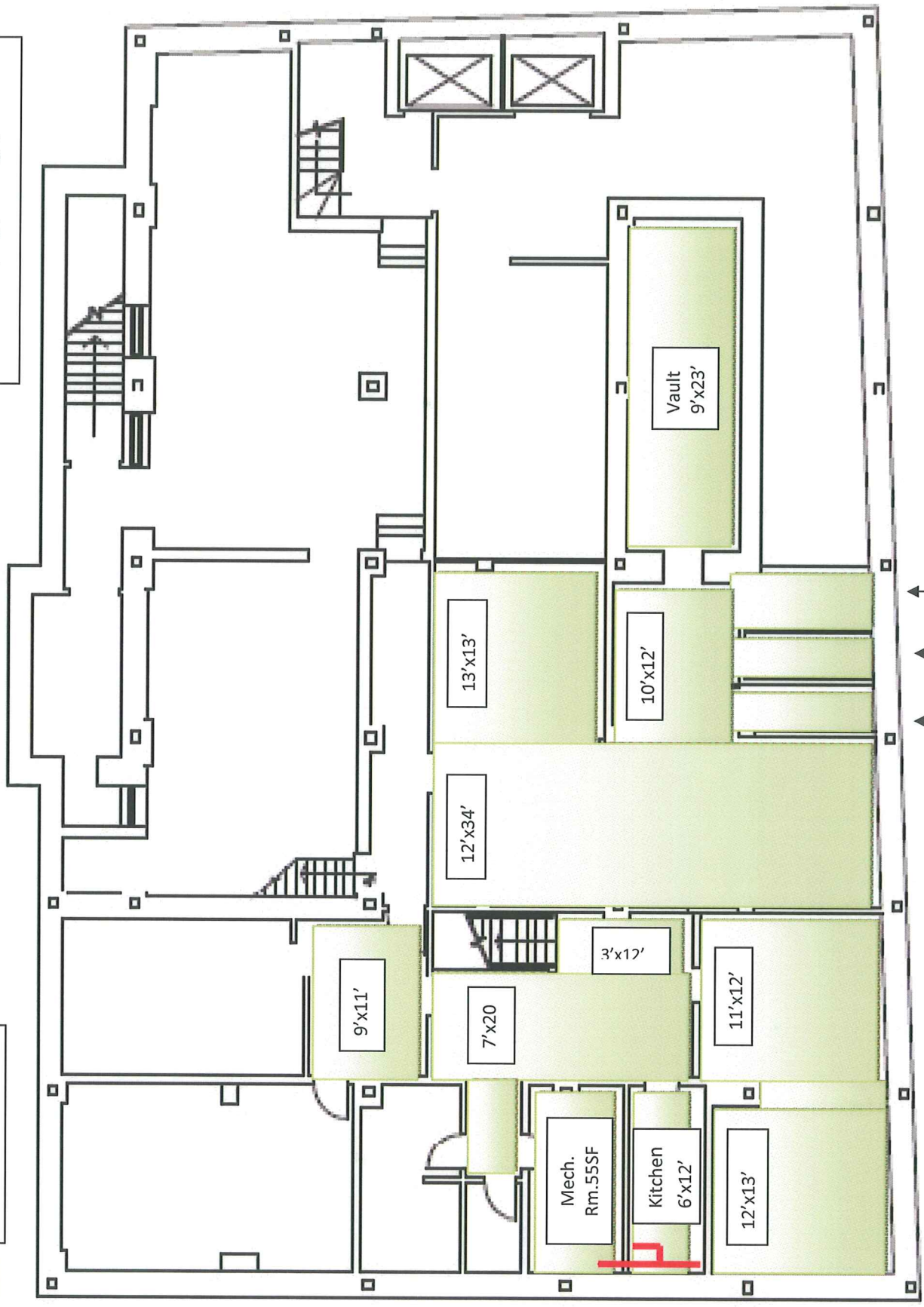
EMSL maintains liability limited to the cost of analysis. This report relates only to the samples reported above and may not be reproduced, except in full, without written approval by EMSL. EMSL bears no responsibility for sample collection activities or analytical method limitations. Interpretation and use of test results are the responsibility of the client. This report must not be used by the client to claim product certification, approval or endorsement by NVLAP, NIST or any agency of the federal government. The test results contained within this report meet the requirements of NELAC unless otherwise specified. Samples received in good condition unless otherwise noted.

Samples analyzed by EMSL Analytical, Inc. 200 Route 130 North, Cinnaminson NJ NVLAP Lab Code 101048-0, AIHA-LAP, LLC-IHLAP Lab 100194, NYS ELAP 10872, NJ DEP 03036

SUPPORT DATA
(Drawings, Photos, Etc.)

Asbestos Flooring

Asbestos Piping / Fittings / Elbows



BASEMENT PLAN
SCALE 1/8"=1'-0"

Each closet 3'x12'

443 Congress Street
Portland, Maine

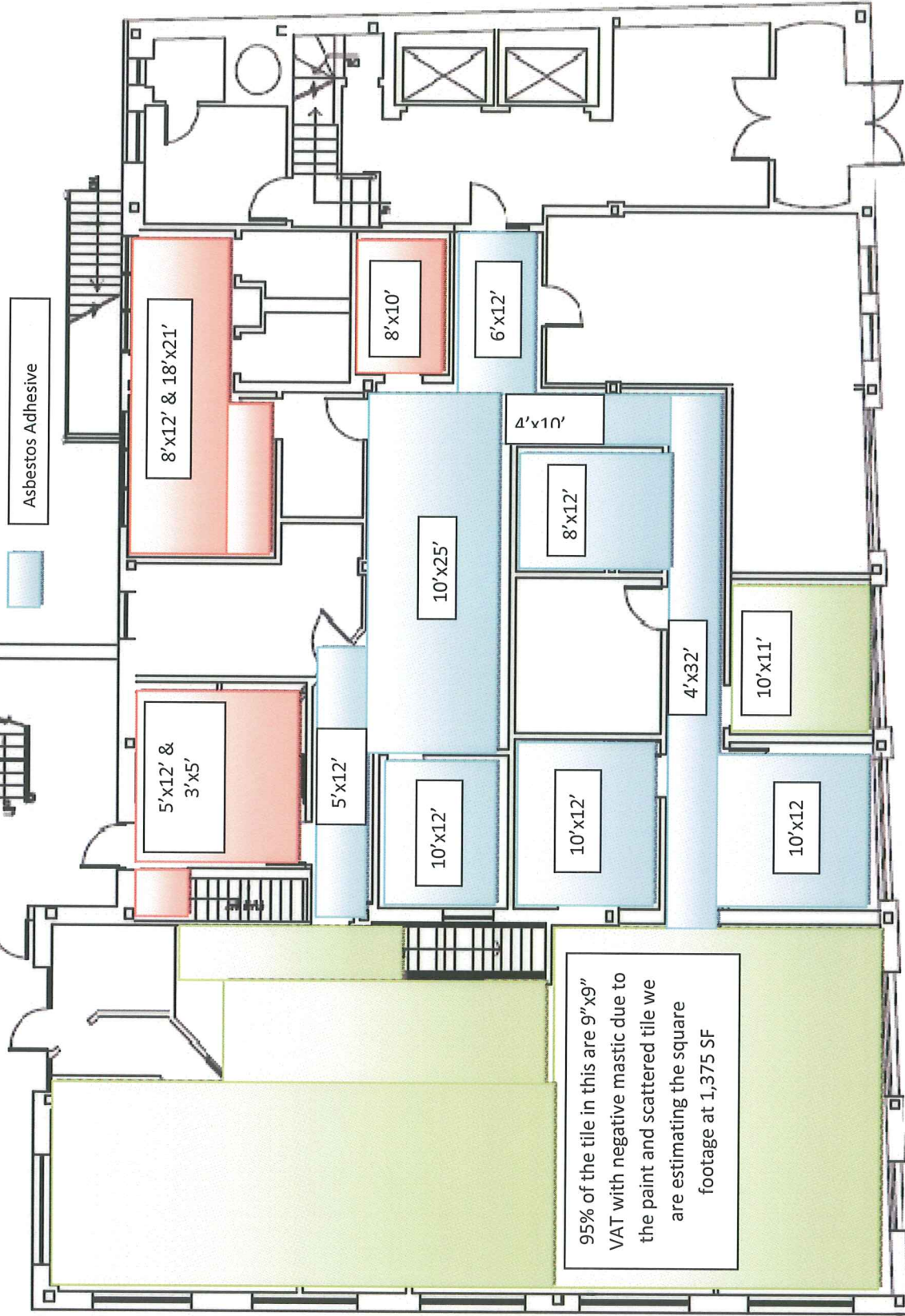
Asbestos Flooring



Asbestos Flooring & Adhesive

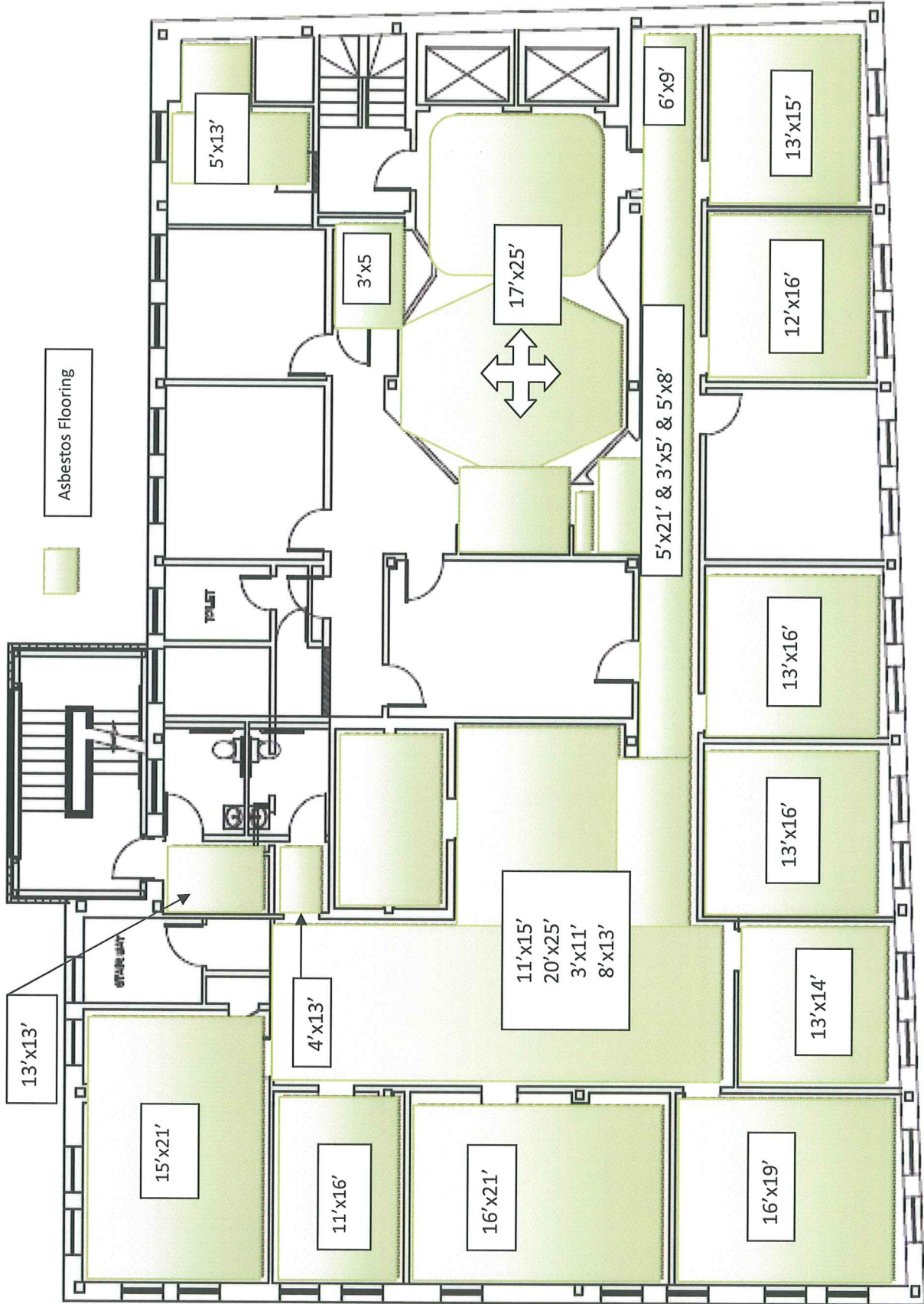


Asbestos Adhesive



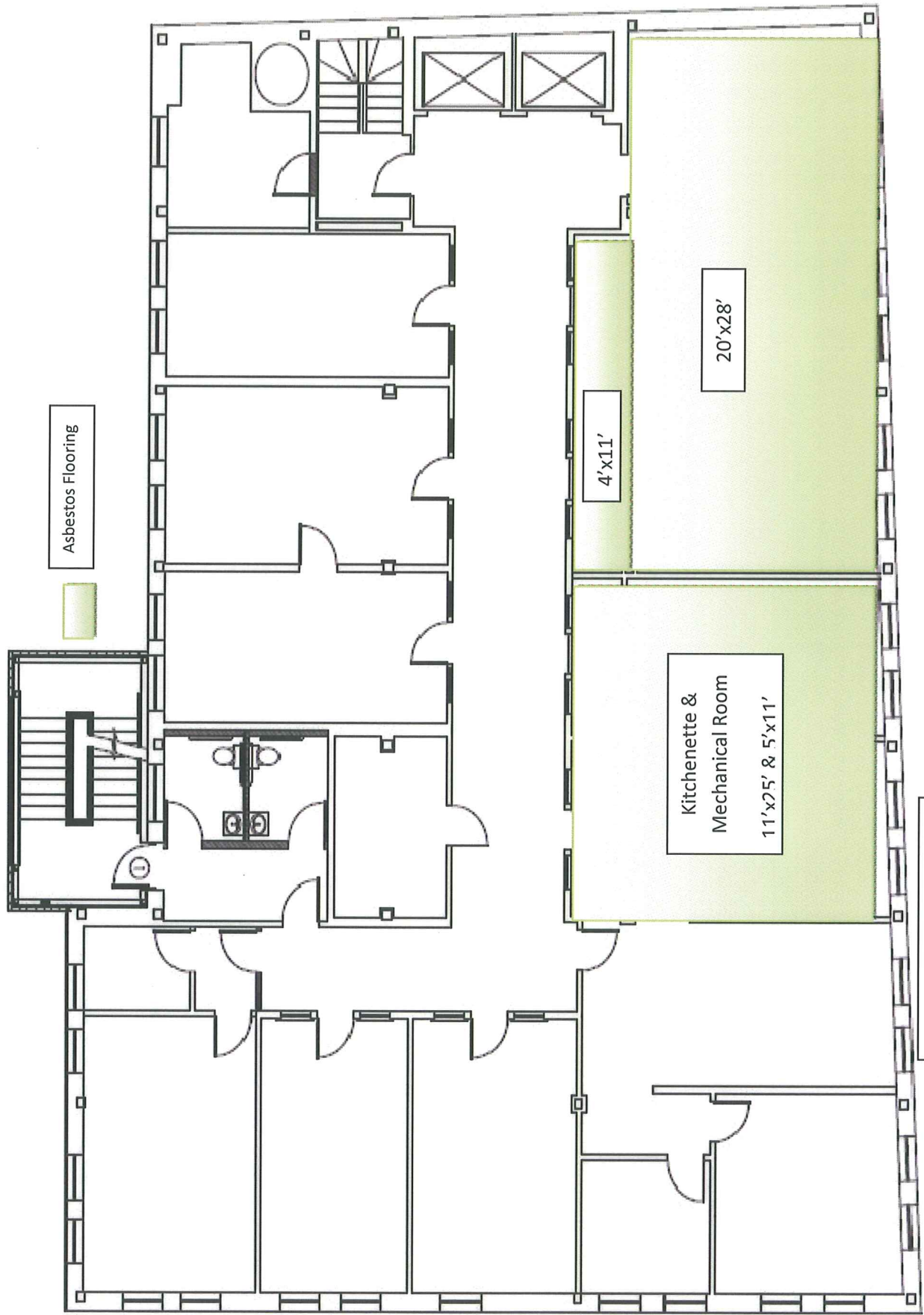
FIRST FLOOR PLAN

443 Congress Street
Portland, Maine



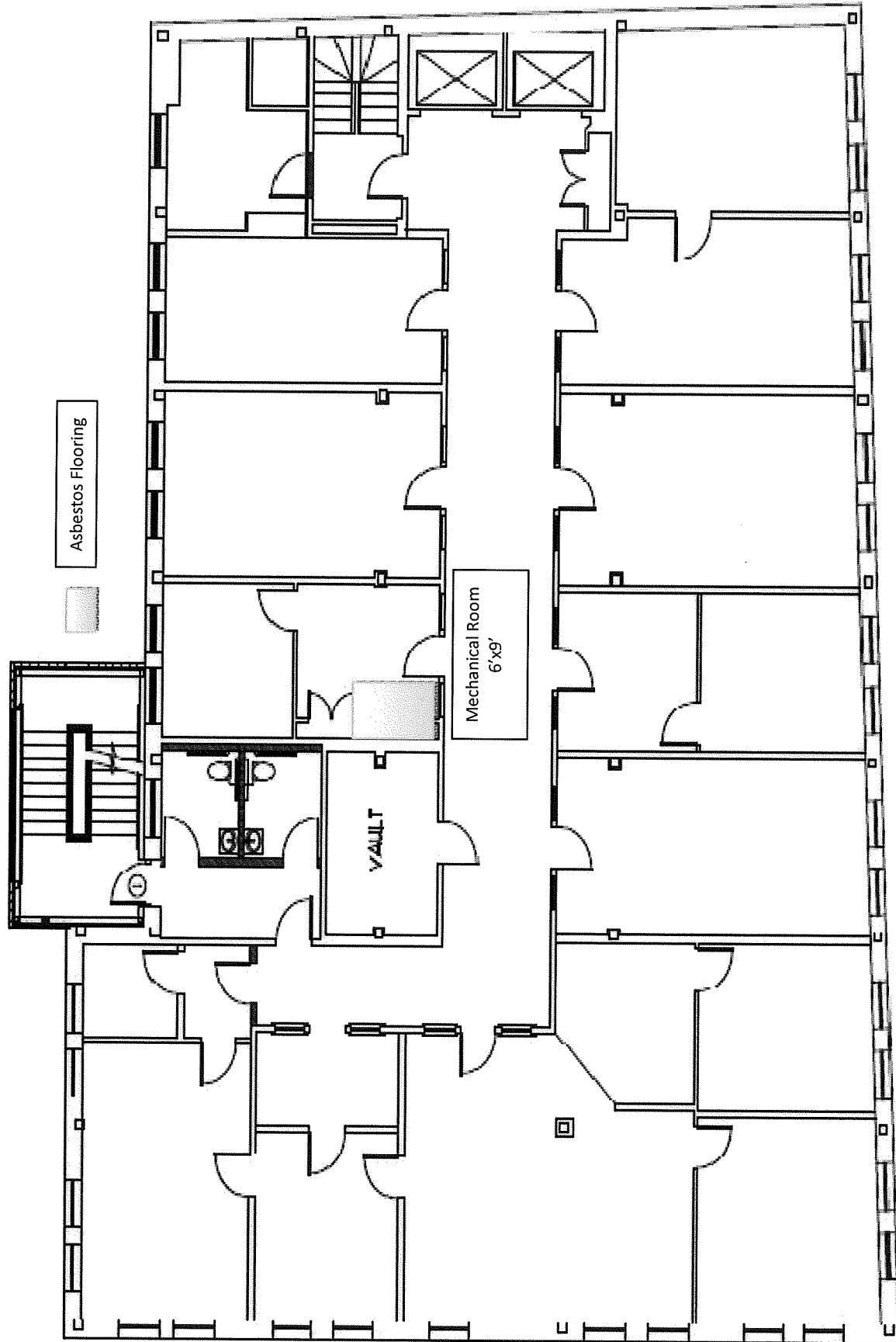
SECOND FLOOR PLAN

443 Congress Street
Portland, Maine



443 Congress Street
Portland, Maine

THIRD FLOOR PLAN



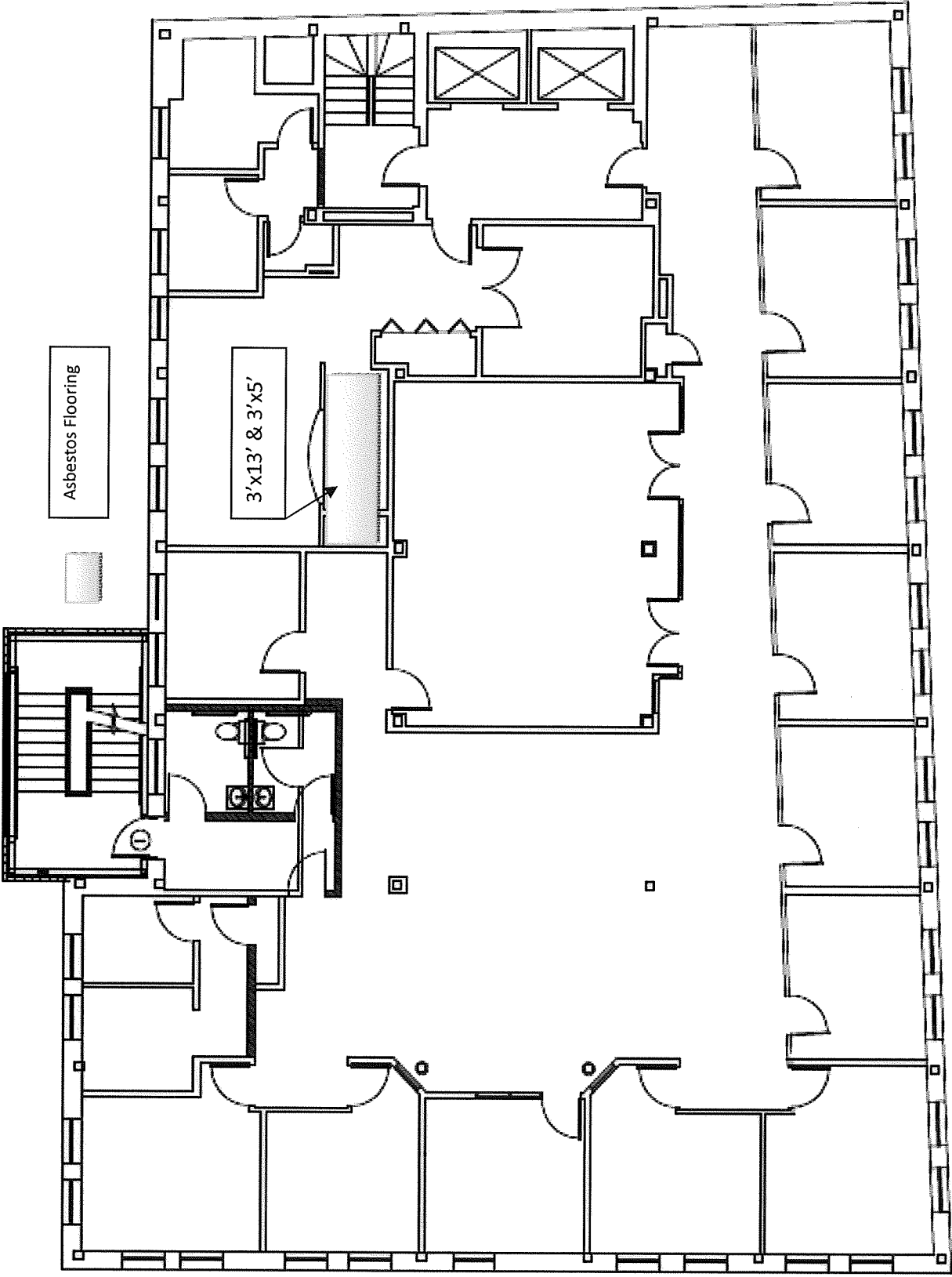
Asbestos Flooring

Mechanical Room
6'x9'

VAULT

443 Congress Street
Portland, Maine

FOURTH FLOOR PLAN



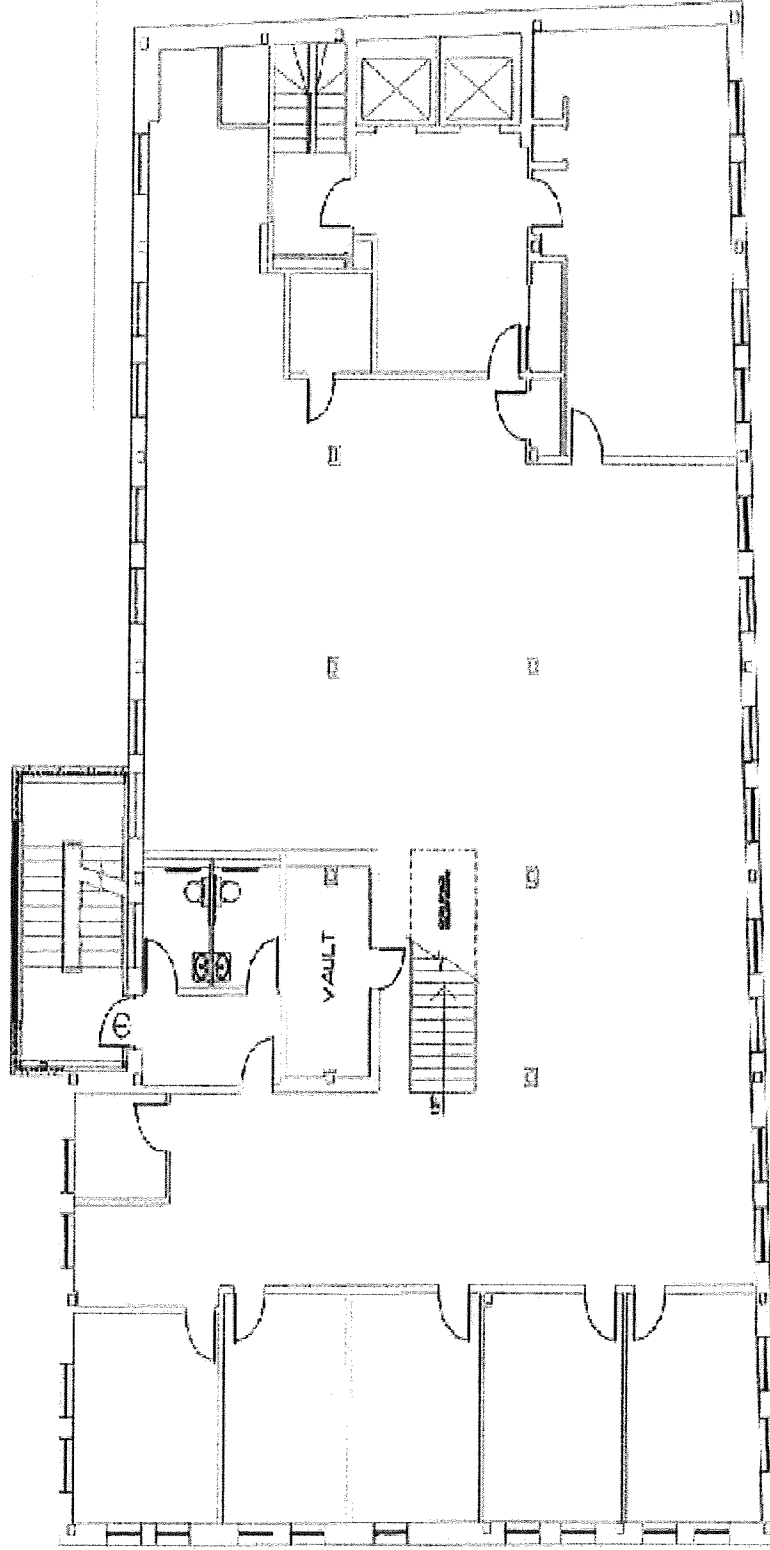
Asbestos Flooring

3'x13' & 3'x5'

443 Congress Street
Portland, Maine

FIFTH FLOOR PLAN

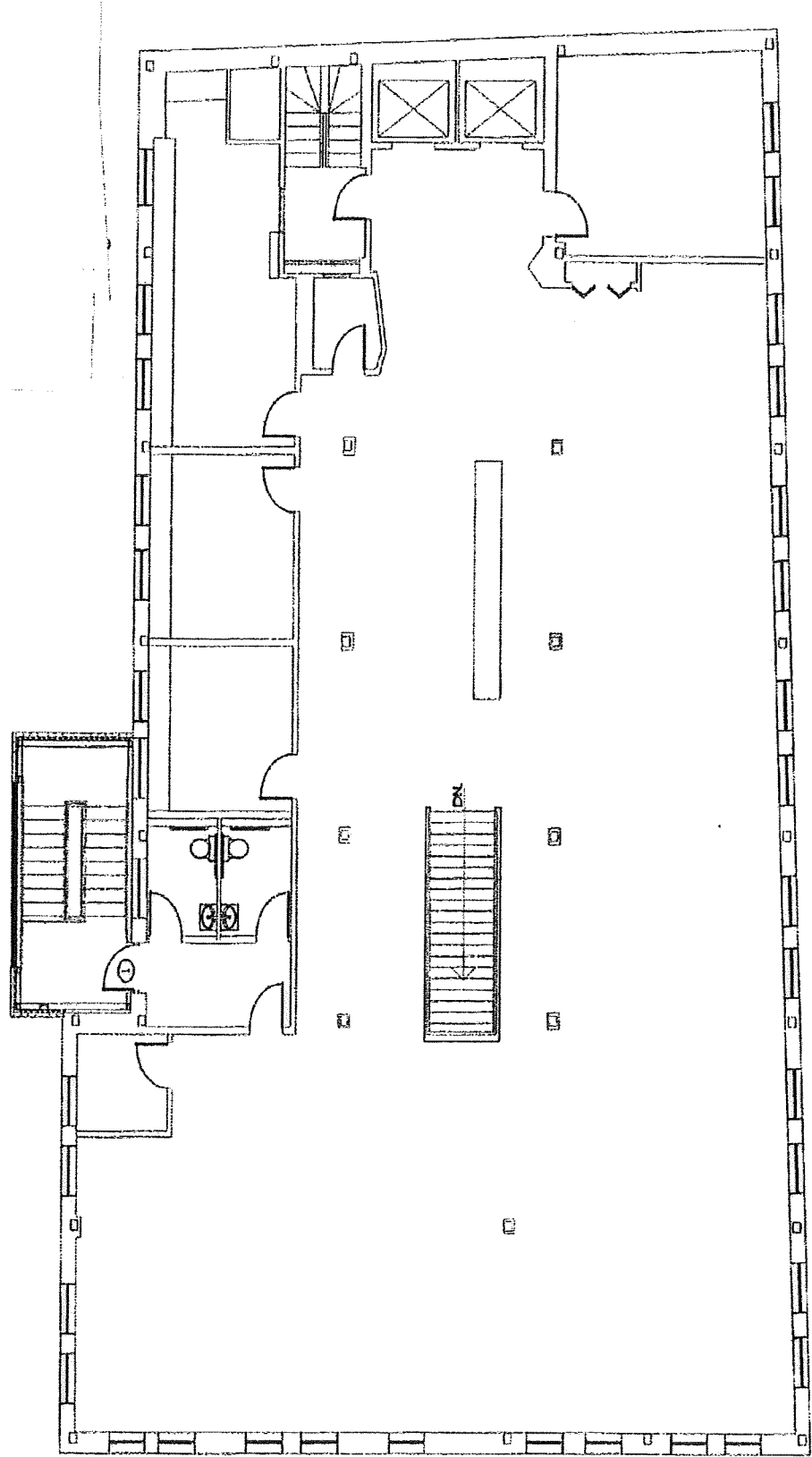
Due to limited access to this floor we will make some assumptions such as all 9"x9" tiles are positive, any Mechanical room with 9"x9" tiles are assumed "asbestos", any hidden materials in walls etc. must be sampled prior to impacting.



SIXTH FLOOR POST DEMO PLAN

443 Congress Street
Portland, Maine

Due to limited access to this floor we will make some assumptions such as all 9"x9" tiles are positive, any Mechanical room with 9"x9" tiles are assumed "asbestos", any hidden materials in walls etc. must be sampled prior to impacting.



443 Congress Street
Portland, Maine

SEVENTH FLOOR POST DEMO PLAN

COMPANY INFORMATION



STATE OF MAINE
DEPARTMENT OF ENVIRONMENTAL PROTECTION

JOHN ELIAS BALDACCI
GOVERNOR

DAVID P. LITTELL
COMMISSIONER

July 7, 2010

Abatement Professionals Corp.
590 County Road
Westbrook, Maine 04092

Dear Licensee:

Asbestos application(s) for individual certification of the **two** employee(s) listed below have been received and **approved**. Individual certification numbers are listed below and wallet card(s) are enclosed. Card(s) are property of the individual to whom each is issued. Your responsibility as a licensee is to ensure delivery of the cards to persons in your employment. This letter should be retained for your company files as record of certification.

Remember, in Maine all **certified employees** working on an asbestos abatement project, whether conducting removal/repair, air monitoring, design, inspection, or analysis functions, **must work for a State of Maine licensed asbestos firm** and carry his/her wallet card(s) on the job site.

As a reminder, prior to renewing your asbestos certification, the State of Maine **requires** an annual refresher course to be taken before submitting a renewal application. A certificate shall expire one year from the last day of the month from the date of issuance, **or on the last day of the month that the training certificate expires**, whichever is sooner. A listing of training providers is attached and it is your responsibility to ensure you have completed a renewal training course prior to your training expiration date.

All our asbestos forms can be found at <http://www.maine.gov/dep/rwm/asbestos/newupdatedformsasb.htm>. Thank you for your cooperation and your completed application(s).

<u>Name</u>	<u>Category</u>	<u>Certification #</u>	<u>Exp. Date</u>
Bruce M. Hackett Sr.	Inspector	AI-0325	05/31/2011
Bruce M. Hackett Sr.	Management Planner	MP-0177	05/31/2011

Sincerely,

Sandra J. Moody, Environmental Technician
Division of Solid Waste Management
Bureau of Remediation and Waste Management

AUGUSTA
17 STATE HOUSE STATION
AUGUSTA, MAINE 04333-0017
(207) 287-7688 FAX: (207) 287-7826
RAY BLDG., HOSPITAL ST.

BANGOR
106 HOGAN ROAD, SUITE 6
BANGOR, MAINE 04401
(207) 941-4570 FAX: (207) 941-4584

PORTLAND
312 CANCO ROAD
PORTLAND, MAINE
(207) 822-6300 FAX

State of Maine
Asbestos Abatement Program

Bruce M. Hackett Sr.

Inspector

Cert 1: AI-0325
Trn.Exp.Date 05/20/2011

Management Planner

Cert 2: MP-0177
Trn.2.Exp.Date 05/20/2011

Expiration Date 05/31/2011

This is not a legal form of official identification





STATE OF MAINE
DEPARTMENT OF ENVIRONMENTAL PROTECTION

JOHN ELIAS BALDACCI
GOVERNOR

DAVID P. LITTELL
COMMISSIONER

June 15, 2010

Attn.: Robert Rickett, President
Abatement Professionals Corp.
590 County Road, Suite 2
Westbrook, Maine 04092

Dear Mr. Rickett:

This letter is in reference to your renewal application for licensure as an **Asbestos Abatement Contractor (Full)**.

This office has received and completed the review of your application and finds it to be in accordance with the requirements of Maine Asbestos Management Regulations Chapter 425, effective May 29, 2004.

Your application has been approved and your firm is licensed to provide asbestos contractor service(s) as described on the enclosed certificate.

Your renewal license number remains at **CF-0012** which is in effect for one year and will expire on June 30, 2011. A renewal application should be filed not less than thirty (30) days prior to expiration of this licensure. Thank you for your continued service to the people of the State of Maine.

If you have any questions please call me at (207) 287-7751.

Sincerely,

Sandra J. Moody, Environmental Technician
Division of Solid Waste Management
Bureau of Remediation and Waste Management

Enclosure

AUGUSTA
17 STATE HOUSE STATION
AUGUSTA, MAINE 04333-0017
(207) 287-7688 FAX: (207) 287-7826
RAY BLDG., HOSPITAL ST.

BANGOR
106 HOGAN ROAD, SUITE 6
BANGOR, MAINE 04401
(207) 941-4570 FAX: (207) 941-4584

PORTLAND
312 CANCO ROAD
PORTLAND, MAINE 04103
(207) 822-6300 FAX: (207) 822-6303

PRESQUE ISLE
1235 CENTRAL DRIVE, SKYWAY PARK
PRESQUE ISLE, MAINE 04679-2094
(207) 764-0477 FAX: (207) 760-3143



State of Maine
Department of Environmental Protection

LICENSE

Abatement Professionals Corp.

Asbestos Abatement Contractor
(Full)

License Number: CF-0012

Expiration Date: 06/30/2011



STATE OF MAINE
DEPARTMENT OF ENVIRONMENTAL PROTECTION

JOHN ELIAS BALDACCI
GOVERNOR

DAVID P. LITTELL
COMMISSIONER

June 15, 2010

Attn.: Robert Rickett, President
Abatement Professionals Corp.
590 County Road, Suite 2
Westbrook, Maine 04092

Dear Mr. Rickett:

This letter is in reference to your renewal application for licensure as an **Asbestos Consultant (Full)**.

This office has received and completed the review of your application and finds it to be in accordance with the requirements of Maine Asbestos Management Regulations Chapter 425, effective May 29, 2004.

Your application has been approved and your firm is licensed to provide asbestos consulting service(s) as described on the enclosed certificate.

Your renewal license number remains at **SF-0028** which is in effect for one year and will expire on June 30, 2011. A renewal application should be filed not less than thirty (30) days prior to expiration of this licensure. Thank you for your continued service to the people of the State of Maine.

If you have any questions please call me at (207) 287-7751.

Sincerely,

Sandra J. Moody, Environmental Technician
Division of Solid Waste Management
Bureau of Remediation and Waste Management

Enclosure

AUGUSTA
17 STATE HOUSE STATION
AUGUSTA, MAINE 04333-0017
(207) 287-7688 FAX: (207) 287-7826
RAY BLDG., HOSPITAL ST.

BANGOR
106 HOGAN ROAD, SUITE 6
BANGOR, MAINE 04401
(207) 941-4570 FAX: (207) 941-4584

PORTLAND
312 CANCO ROAD
PORTLAND, MAINE 04103
(207) 822-6300 FAX: (207) 822-6303

PRESQUE ISLE
1235 CENTRAL DRIVE, SKYWAY PARK
PRESQUE ISLE, MAINE 04679-2094
(207) 764-0477 FAX: (207) 760-3143



State of Maine
Department of Environmental Protection



LICENSE

Abatement Professionals Corp.

Asbestos Consultant
(Full)

License Number: SF-0028

Expiration Date: 06/30/2011