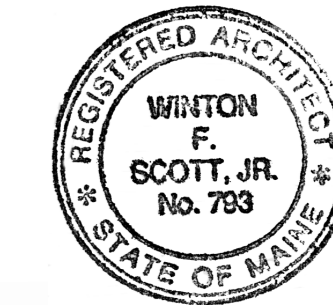


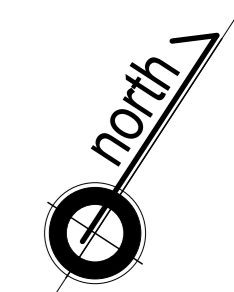


**Winton Scott Architects**  
 5 Milk Street  
 Portland, Maine 04101  
 207 774 4811  
 www.wintonscott.com

Architecture / Planning  
 Preservation Architecture  
 Interior Architecture



*Winton Scott*



ISSUED FOR BUILDING  
 PERMIT ONLY  
 03/30/16

Structural Engineer  
 Strucutal Integrity  
 Consulting Engineers, Inc.

Owner  
 JJR 443 Congress, LLC

443 Congress

Portland, Maine

Roof Plan  
 Demolition

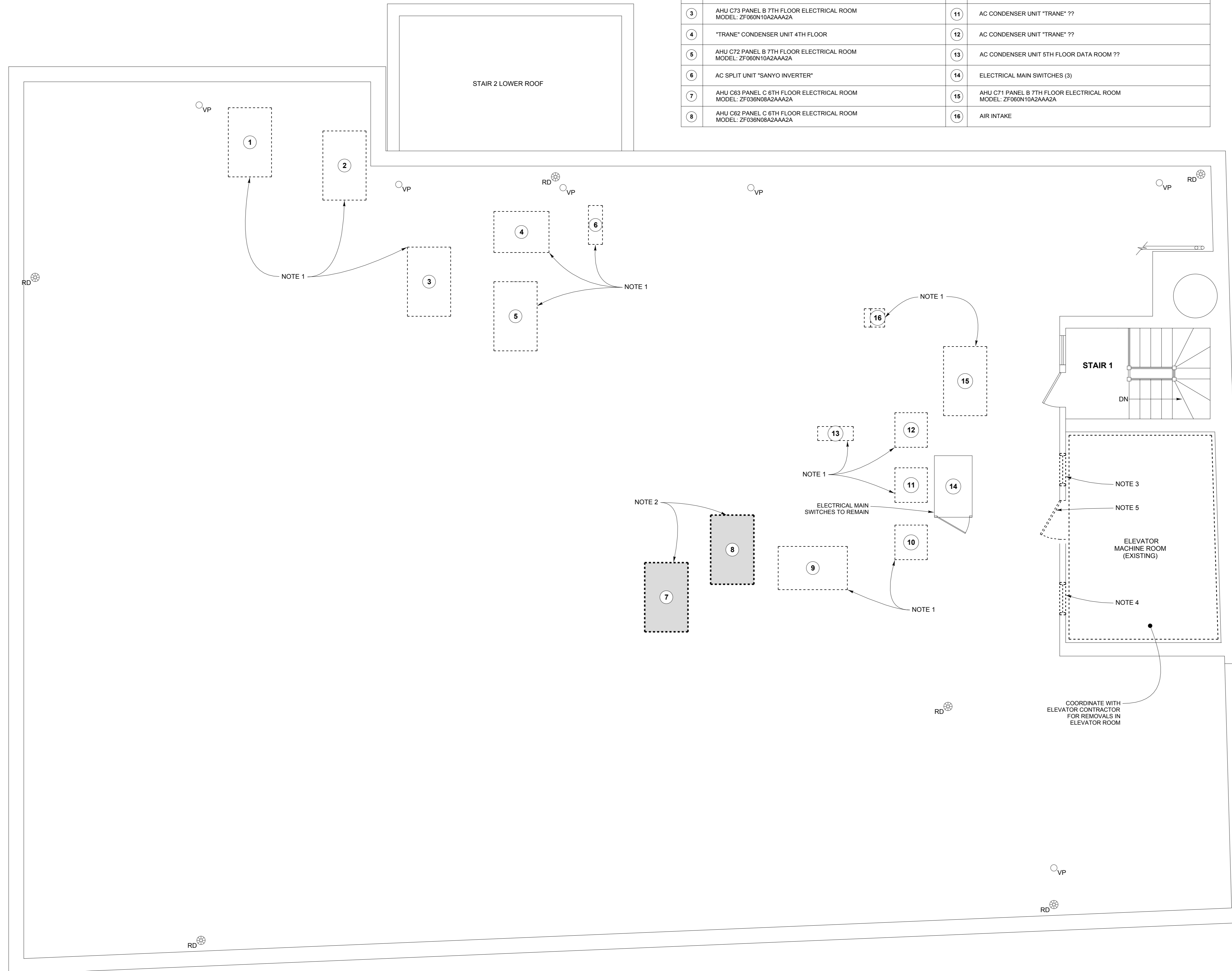
1/4" = 1'-0"

D 1.8

March 30, 2016

**LEGEND OF EXISTING ROOF MECHANICAL EQUIPMENTS**

1	AHU C65 6TH FLOOR BASEMENT ELECTRICAL PANEL UNDER STAIRS MODEL: ZF060N10A2AAA2A	9	AHU C61 PANEL C 6TH FLOOR ELECTRICAL ROOM MODEL: ZF036N08A2AAA2A
2	AHU C64 6TH FLOOR BASEMENT ELECTRICAL PANEL UNDER STAIRS MODEL: ZF060N10A2AAA2A	10	AC CONDENSER UNIT "TRANE" ??
3	AHU C73 PANEL B 7TH FLOOR ELECTRICAL ROOM MODEL: ZF060N10A2AAA2A	11	AC CONDENSER UNIT "TRANE" ??
4	"TRANE" CONDENSER UNIT 4TH FLOOR	12	AC CONDENSER UNIT "TRANE" ??
5	AHU C72 PANEL B 7TH FLOOR ELECTRICAL ROOM MODEL: ZF060N10A2AAA2A	13	AC CONDENSER UNIT 5TH FLOOR DATA ROOM ??
6	AC SPLIT UNIT "SANYO INVERTER"	14	ELECTRICAL MAIN SWITCHES (3)
7	AHU C63 PANEL C 6TH FLOOR ELECTRICAL ROOM MODEL: ZF036N08A2AAA2A	15	AHU C71 PANEL B 7TH FLOOR ELECTRICAL ROOM MODEL: ZF060N10A2AAA2A
8	AHU C62 PANEL C 6TH FLOOR ELECTRICAL ROOM MODEL: ZF036N08A2AAA2A	16	AIR INTAKE



**DEMOLITION NOTES**

**NOTE 1:**  
 REMOVE MECHANICAL EQUIPMENT AND DISPOSE OFF PER OWNER'S INSTRUCTIONS; REMOVE CURB COMPLETE; INFILL ROOF ASSEMBLY AND PATCH ROOFING TO MATCH ADJACENT EXISTING

**NOTE 2:**  
 REMOVE AND RELOCATE AIR HANDLER. SEE A1.9 FOR PROPOSED LOCATIONS; REMOVE CURB COMPLETE; INFILL ROOF ASSEMBLY AND PATCH ROOFING AT REMOVALS TO MATCH ADJACENT EXISTING

**NOTE 3:**  
 REMOVE EXISTING WINDOW COMPLETE WITH FRAME; INFILL OPENING AND FINISH TO MATCH ADJACENT EXISTING

**NOTE 4:**  
 REMOVE EXISTING WINDOW AND LOUVER COMPLETE WITH FRAME; PREPARE OPENING FOR INSTALLATION OF NEW LOUVER

**NOTE 5:**  
 REMOVE EXISTING DOOR AND FRAME; PREPARE OPENING FOR INSTALLATION OF NEW DOOR AND FRAME