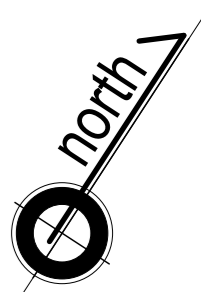


Winton Scott



ISSUED FOR BUILDING
 PERMIT ONLY
 03/30/16

Structural Engineer
 Strucruat Integrity
 Consulting Engineers, Inc.

Owner
 JJR 443 Congress, LLC

443 Congress

Portland, Maine

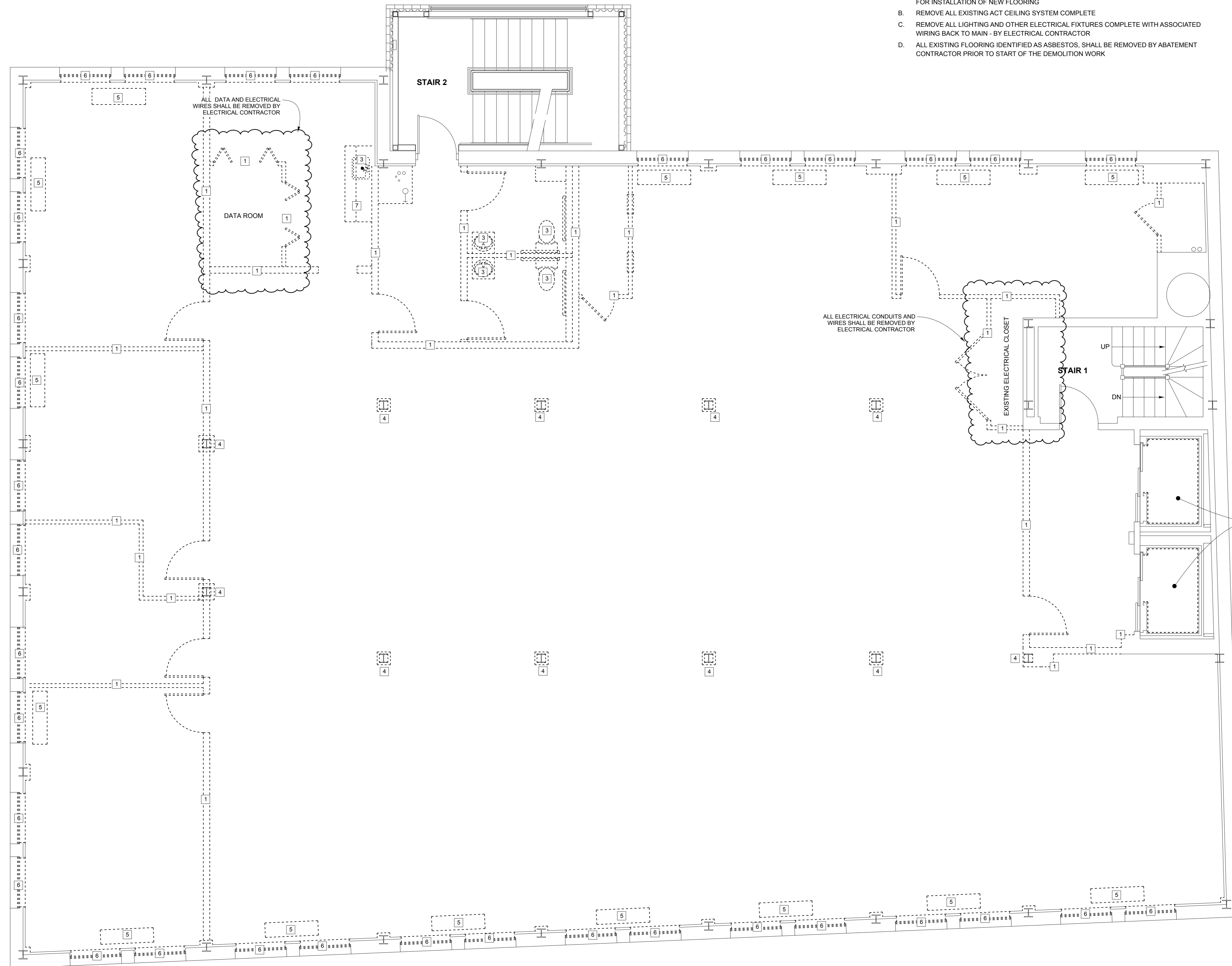
Fourth Floor
 Demolition Plan

1/4" = 1'-0"

D 1.4

GENERAL NOTES - APPLY ON WHOLE FLOOR, U.N.O.

- A. REMOVE ALL EXISTING FLOORING AND ANY UNDERLAYMENT COMPLETE. PREPARE BASE FOR INSTALLATION OF NEW FLOORING
- B. REMOVE ALL EXISTING ACT CEILING SYSTEM COMPLETE
- C. REMOVE ALL LIGHTING AND OTHER ELECTRICAL FIXTURES COMPLETE WITH ASSOCIATED WIRING BACK TO MAIN - BY ELECTRICAL CONTRACTOR
- D. ALL EXISTING FLOORING IDENTIFIED AS ASBESTOS, SHALL BE REMOVED BY ABATEMENT CONTRACTOR PRIOR TO START OF THE DEMOLITION WORK



DEMOLITION NOTES

1. REMOVE INTERIOR WALLS AS SHOWN COMPLETE WITH BASE, DOORS AND FRAMES - TYPICAL
2. NOT USED
3. REMOVE PLUMBING FIXTURES AND ASSOCIATED PIPING BACK TO MAIN; CAP AND FINISH TO PREPARE SURFACE FOR INSTALLATION OF NEW FINISH
4. REMOVE ALL COLUMN WRAP FRAMING AND FINISHES; PREPARE COLUMN FOR NEW FIRE RATING TREATMENT AND FINISH
5. REMOVE EXISTING RADIATORS AND ASSOCIATED PIPING BACK TO MAIN; CAP AND PREPARE SURFACE FOR NEW FINISH - TYPICAL
6. REMOVE WINDOW SASH AND TRACKS BACK TO FRAME; PREPARE EXISTING FRAME FOR INSTALLATION OF NEW WINDOW
7. REMOVE BUILT IN BASE AND/OR WALL CABINETS
8. REMOVE SOFFIT COMPLETE WITH FRAMING

DEMOLITION NOTES

9. REMOVE EXISTING STEEL FRAME AND WOOD STAIR COMPLETE WITH RAILS AND BUILT-IN CABINETS; INFILL FLOORING/ CEILING ASSEMBLY TO MATCH ADJACENT IN PREPARATION FOR INSTALLATION OF THE NEW FINISHES
10. REMOVE EXISTING STAIR COMPLETE WITH FRAME AND RAILING
11. REMOVE PORTION OF MASONRY WALL BELOW WINDOW SILL. PREPARE OPENING FOR INSTALLATION OF NEW DOOR AND FRAME
12. CUT SHOWN PORTION EXISTING GAS PIPE AND LOWER TO ENTER THE BUILDING BELOW THE PROPOSED DECK - BY MECHANICAL CONTRACTOR
13. REMOVE EXISTING BOLLARD; PATCH AT REMOVAL TO MATCH EXISTING
14. REMOVE DOOR AND FRAME COMPLETE; PATCH AT REMOVALS AND PAINT TO MATCH EXISTING ADJACENT SURFACES
15. REMOVE EXISTING LOUVER; PREPARE OPENING FOR NEW WALL INFILL TO MATCH EXISTING - 1HR RATED
16. REMOVE DOOR; PATCH FRAME AT REMOVALS TO MATCH ADJACENT SURFACES; PAINT TO FINISH