

*Winton Scott*



ISSUED FOR BUILDING  
 PERMIT ONLY  
 03/30/16

Structural Engineer  
 Strucutral Integrity  
 Consulting Engineers, Inc.

Owner  
 JJR 443 Congress, LLC

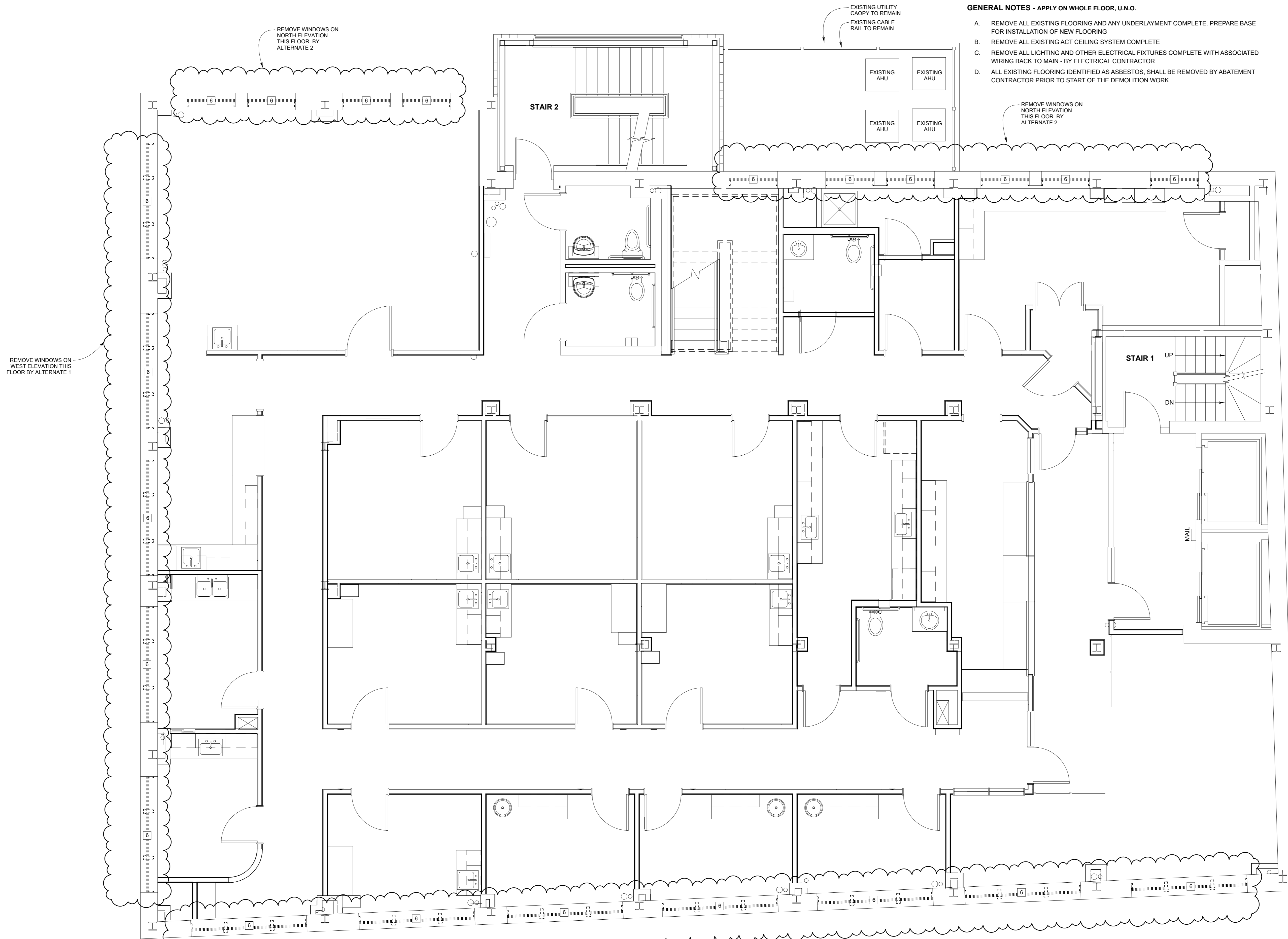
443 Congress

Portland, Maine

Second Floor  
 Demolition Plan

1/4" = 1'-0"

**D 1.2**



**GENERAL NOTES - APPLY ON WHOLE FLOOR, U.N.O.**

- A. REMOVE ALL EXISTING FLOORING AND ANY UNDERLAYMENT COMPLETE. PREPARE BASE FOR INSTALLATION OF NEW FLOORING
- B. REMOVE ALL EXISTING ACT CEILING SYSTEM COMPLETE
- C. REMOVE ALL LIGHTING AND OTHER ELECTRICAL FIXTURES COMPLETE WITH ASSOCIATED WIRING BACK TO MAIN - BY ELECTRICAL CONTRACTOR
- D. ALL EXISTING FLOORING IDENTIFIED AS ASBESTOS, SHALL BE REMOVED BY ABATEMENT CONTRACTOR PRIOR TO START OF THE DEMOLITION WORK

**DEMOLITION NOTES**

- 1. REMOVE INTERIOR WALLS AS SHOWN COMPLETE WITH BASE, DOORS AND FRAMES - TYPICAL
- 2. NOT USED
- 3. REMOVE PLUMBING FIXTURES AND ASSOCIATED PIPING BACK TO MAIN; CAP AND FINISH TO PREPARE SURFACE FOR INSTALLATION OF NEW FINISH
- 4. REMOVE ALL COLUMN WRAP FRAMING AND FINISHES; PREPARE COLUMN FOR NEW FIRE RATING TREATMENT AND FINISH
- 5. REMOVE EXISTING RADIATORS AND ASSOCIATED PIPING BACK TO MAIN; CAP AND PREPARE SURFACE FOR NEW FINISH - TYPICAL
- 6. REMOVE WINDOW SASH AND TRACKS BACK TO FRAME; PREPARE EXISTING FRAME FOR INSTALLATION OF NEW WINDOW
- 7. REMOVE BUILT IN BASE AND/OR WALL CABINETS
- 8. REMOVE SOFFIT COMPLETE WITH FRAMING

**DEMOLITION NOTES**

- 9. REMOVE EXISTING STEEL FRAME AND WOOD STAIR COMPLETE WITH RAILS AND BUILT-IN CABINETS; INFILL FLOORING/ CEILING ASSEMBLY TO MATCH ADJACENT IN PREPARATION FOR INSTALLATION OF THE NEW FINISHES
- 10. REMOVE EXISTING STAIR COMPLETE WITH FRAME AND RAILING
- 11. REMOVE PORTION OF MASONRY WALL BELOW WINDOW SILL. PREPARE OPENING FOR INSTALLATION OF NEW DOOR AND FRAME
- 12. CUT SHOWN PORTION EXISTING GAS PIPE AND LOWER TO ENTER THE BUILDING BELOW THE PROPOSED DECK - BY MECHANICAL CONTRACTOR
- 13. REMOVE EXISTING BOLLARD; PATCH AT REMOVAL TO MATCH EXISTING
- 14. REMOVE DOOR AND FRAME COMPLETE; PATCH AT REMOVALS AND PAINT TO MATCH EXISTING ADJACENT SURFACES
- 15. REMOVE EXISTING LOUVER; PREPARE OPENING FOR NEW WALL INFILL TO MATCH EXISTING - 1HR RATED
- 16. REMOVE DOOR; PATCH FRAME AT REMOVALS TO MATCH ADJACENT SURFACES; PAINT TO FINISH

REMOVE WINDOWS ON SOUTH ELEVATION THIS FLOOR BY ALTERNATE 1