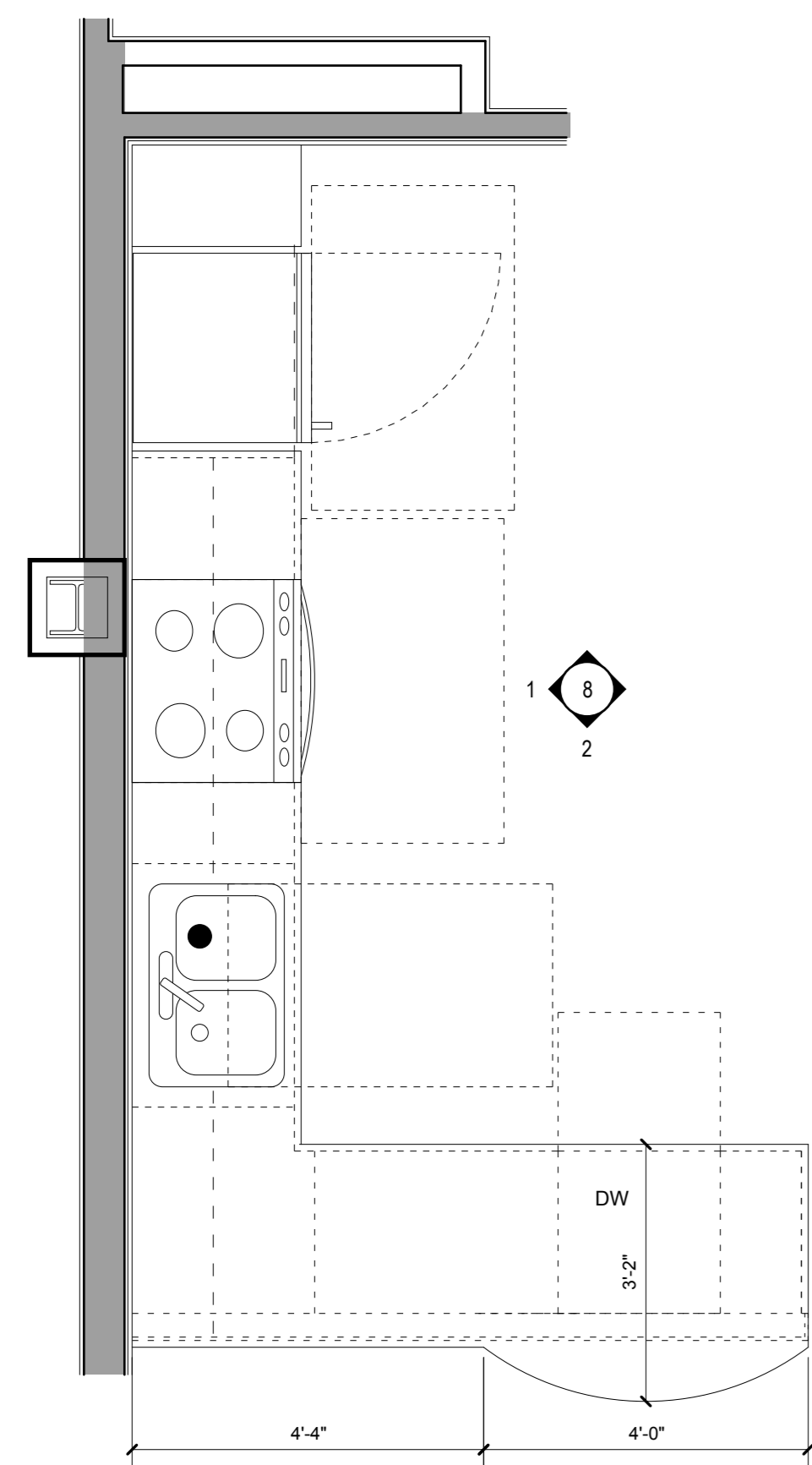
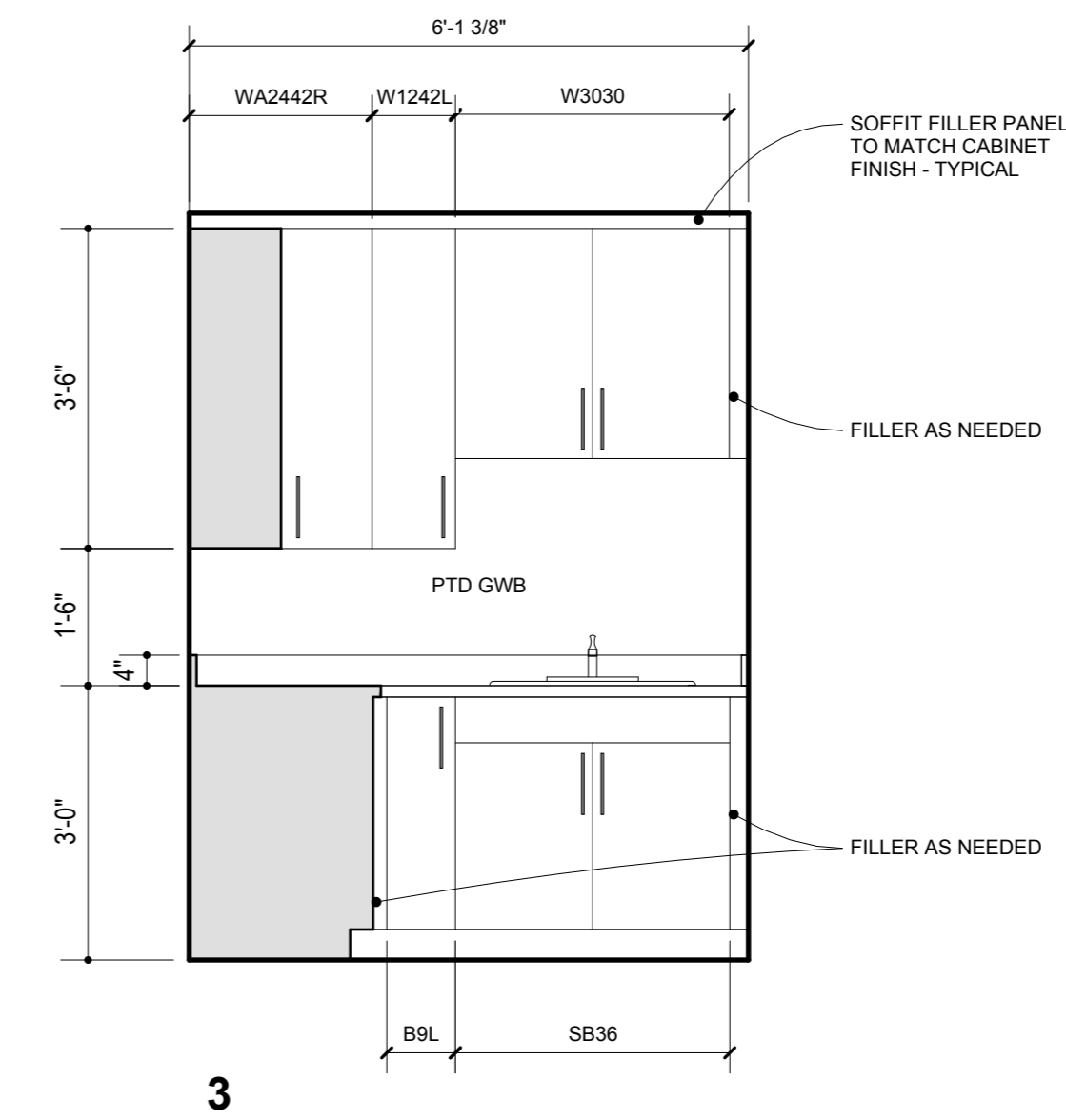
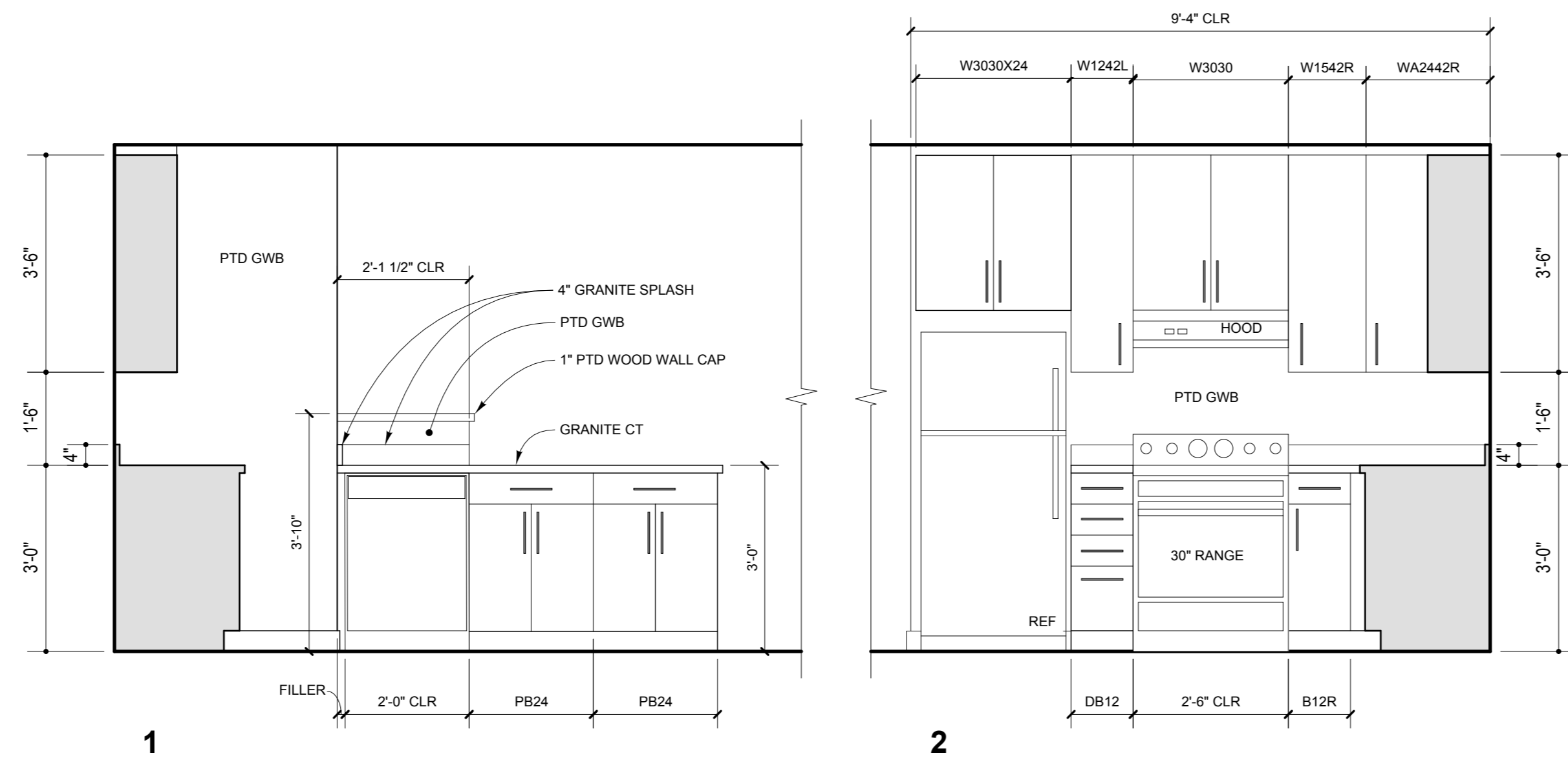
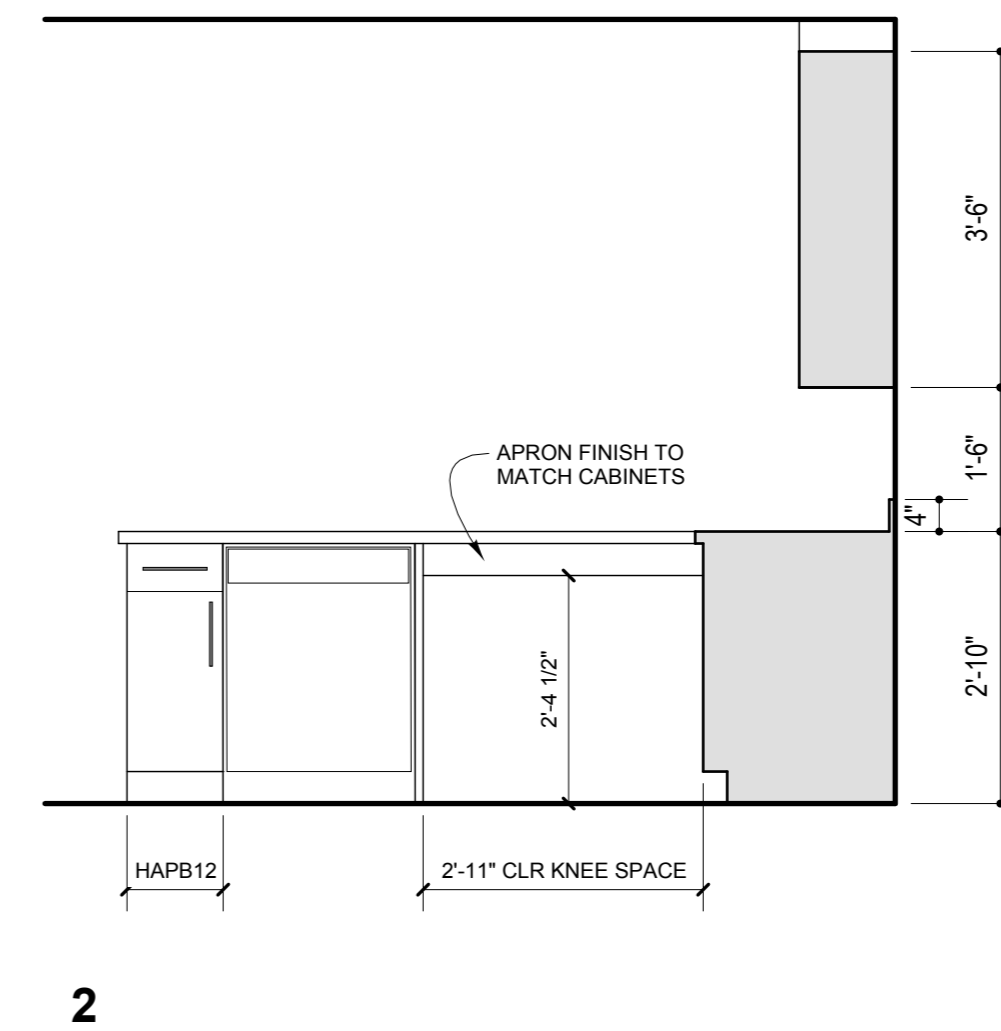
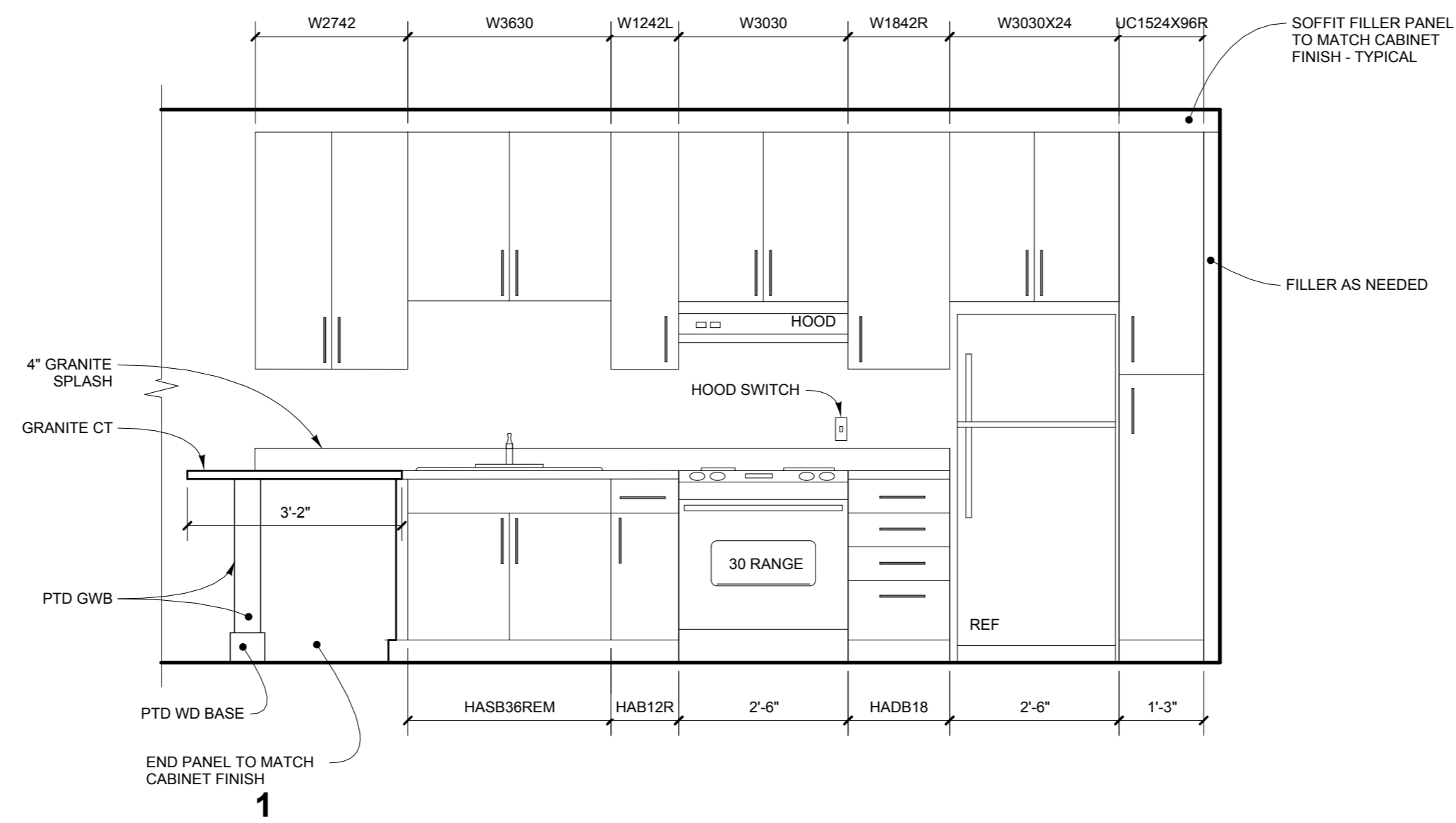


7 KITCHEN IN UNIT 407, 507, 607, 707
SCALE: 1/2" = 1'-0"

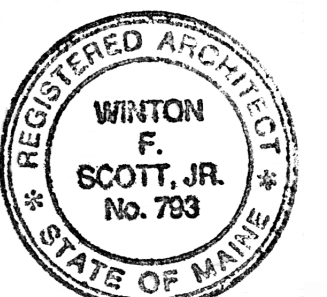


8 KITCHEN TYPE "C" ACCESSIBLE UNIT 403
SCALE: 1/2" = 1'-0"



Winton Scott Architects
5 Milk Street
Portland, Maine 04101
207 774 4811
www.wintonscott.com

Architecture / Planning
Preservation Architecture
Interior Architecture



Winton Scott

ISSUED FOR BUILDING
PERMIT ONLY
03/30/16

Structural Engineer
Strucutral Integrity
Consulting Engineers, Inc.

Owner
Northland
Enterprises LLC.

443 Congress

Portland, Maine

Enlarged Plans

Kitchen

1/2" = 1'-0"

A 7.6

March 30, 2016