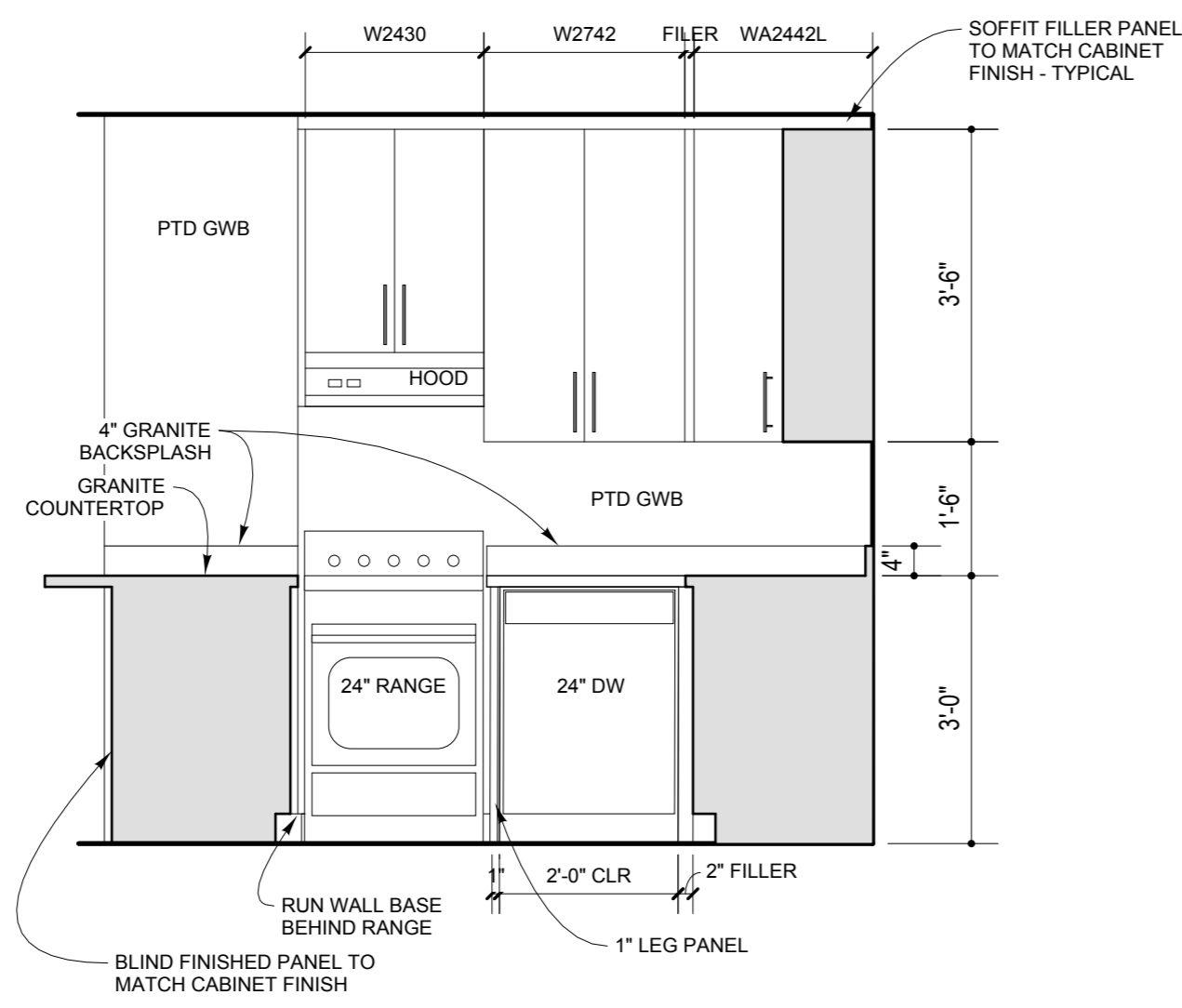
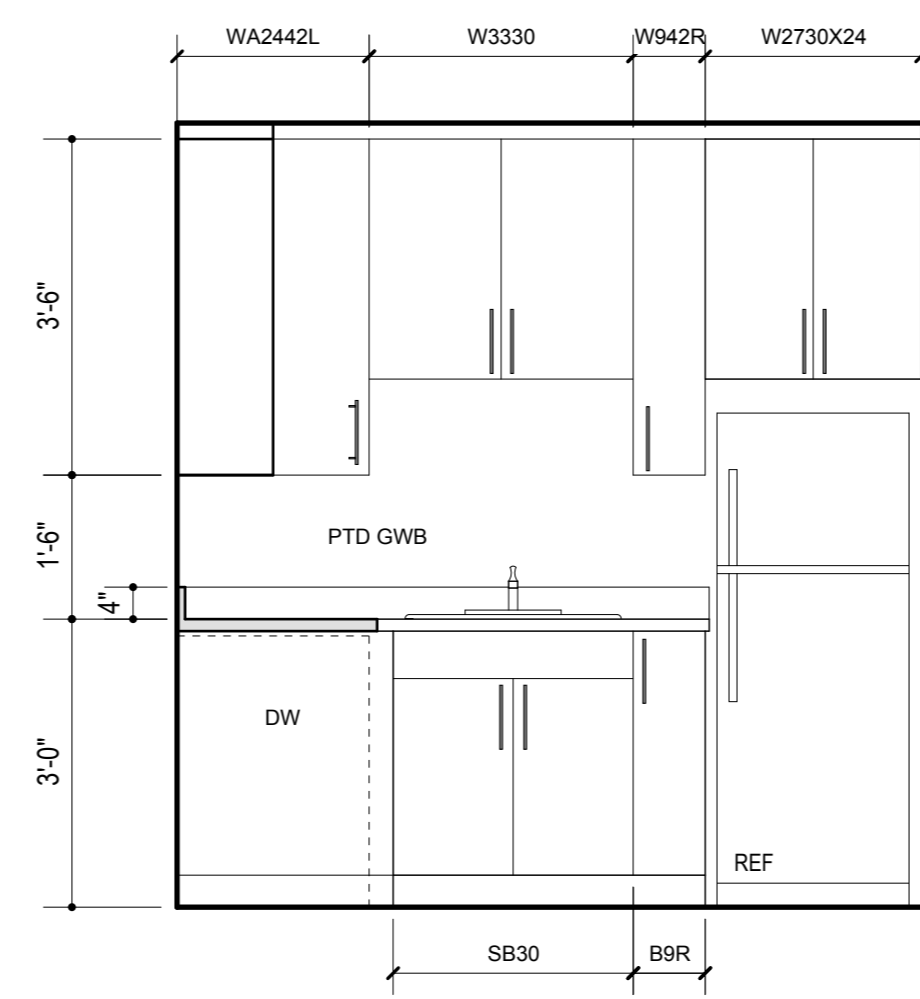


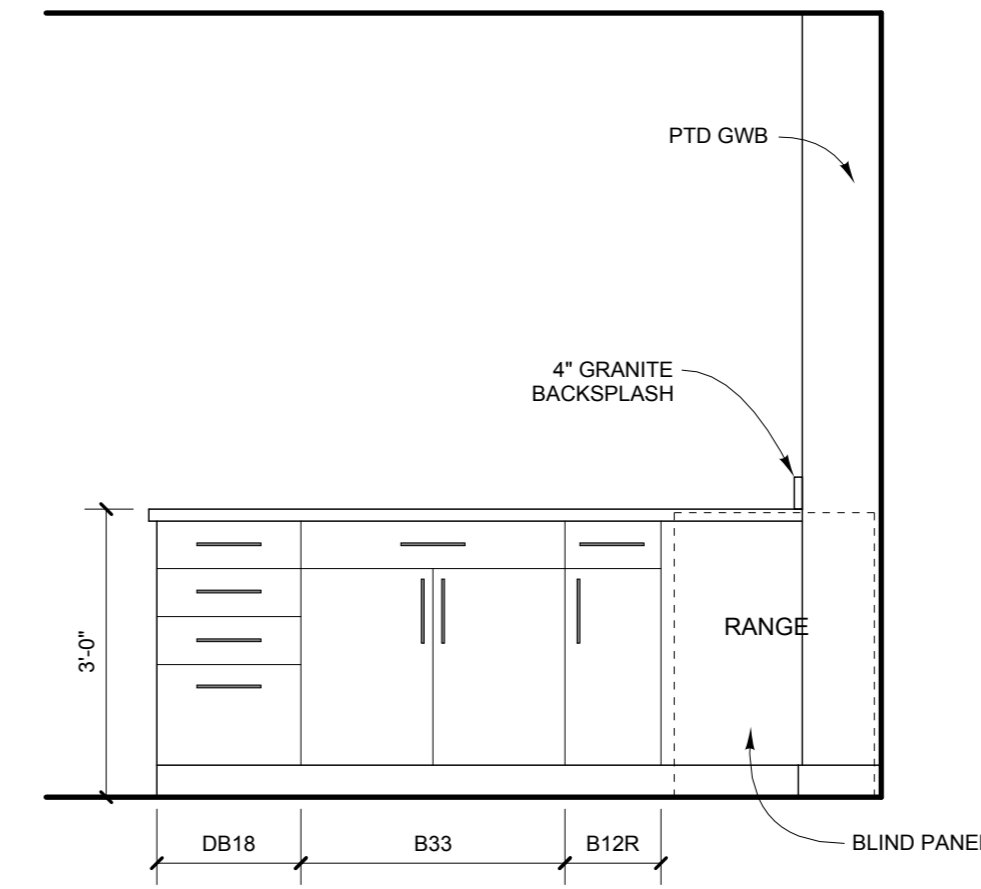
**1 KITCHEN TYPE A IN UNIT 401, 501, 601, 701**  
SCALE: 1/2" = 1'-0"



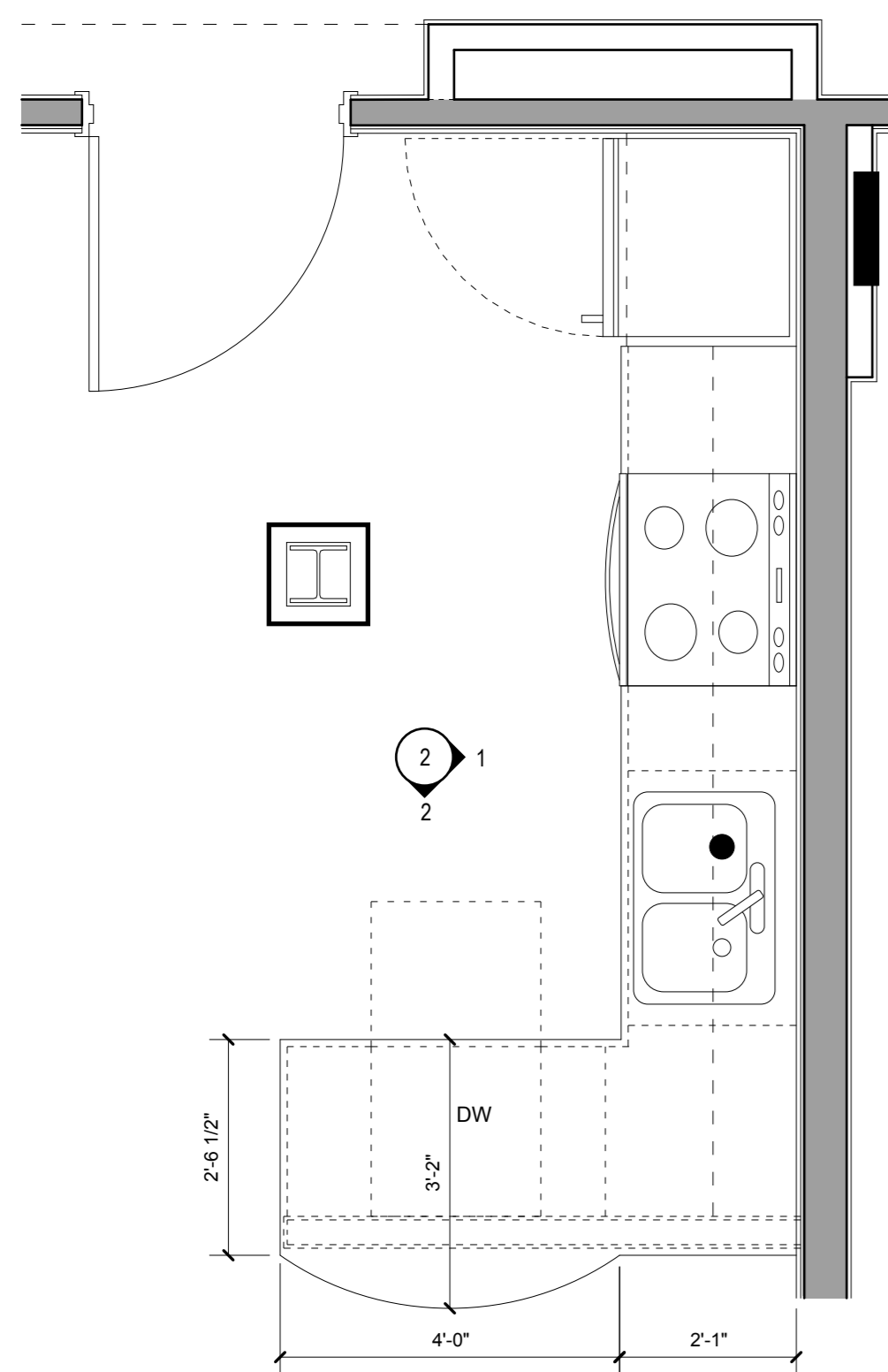
**1**  
**1**



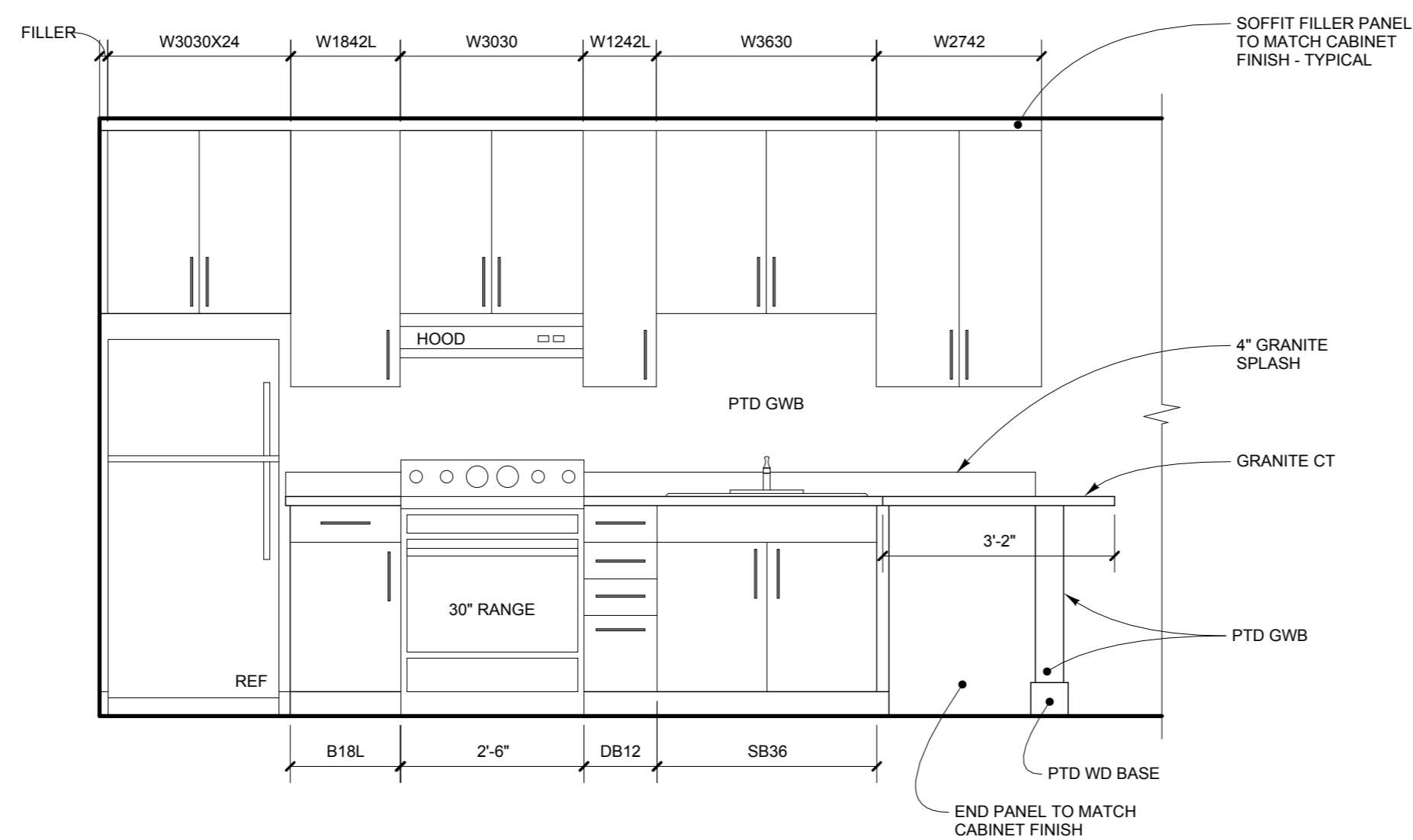
**2**  
**1**



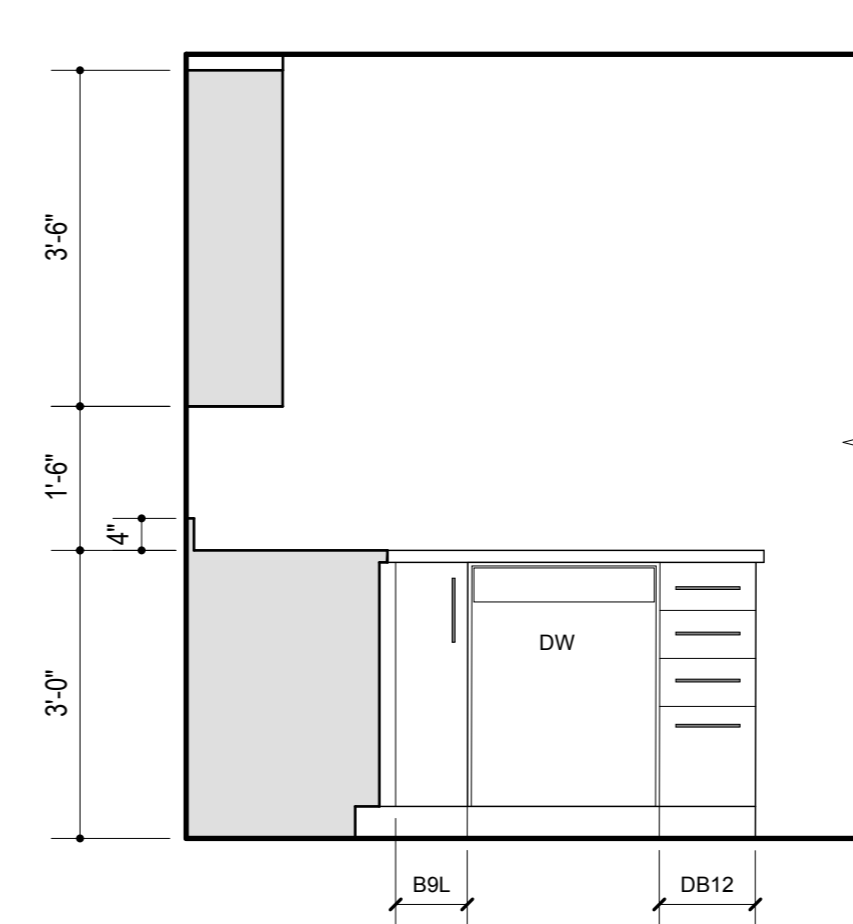
**3**  
**1**



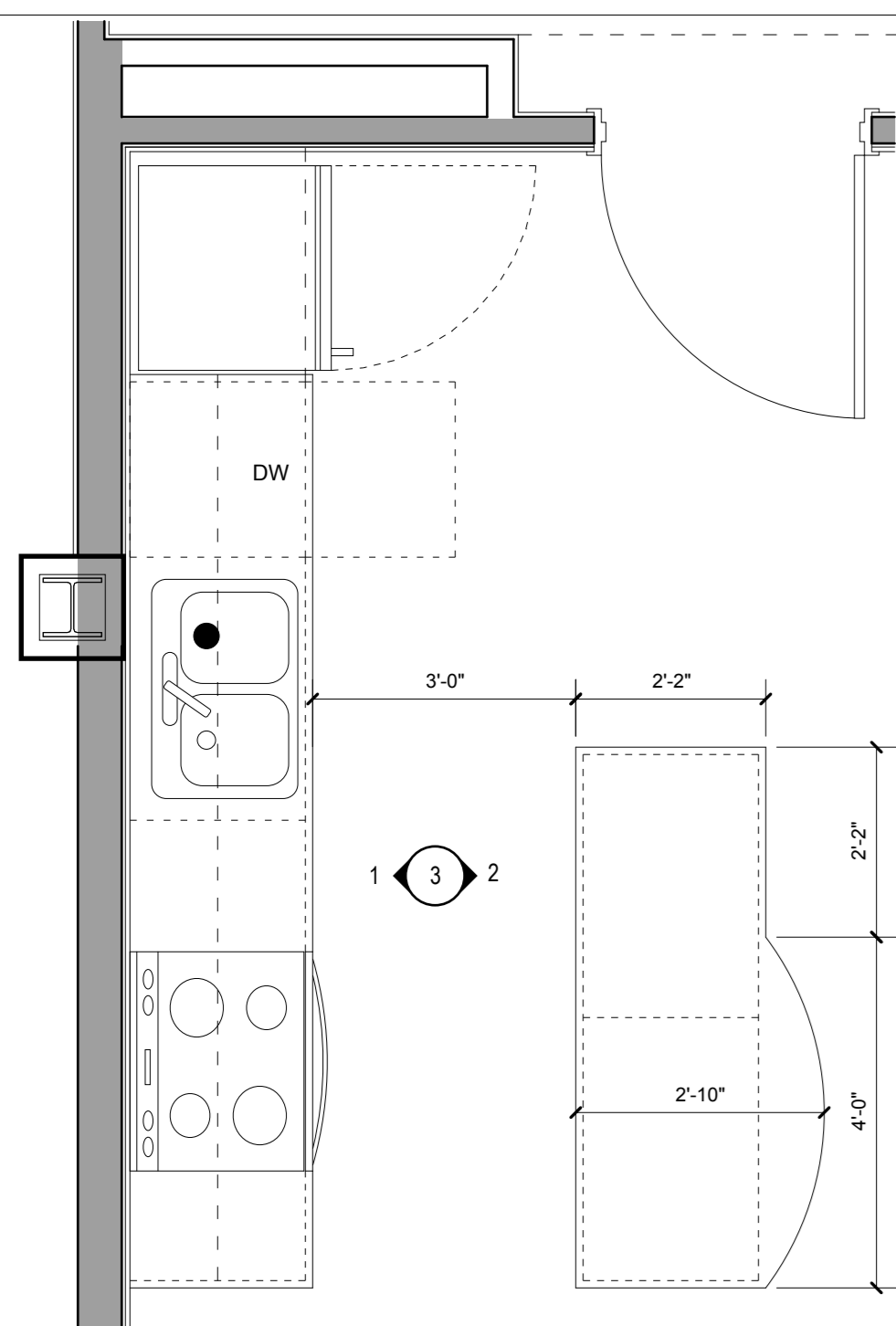
**2 KITCHEN TYPE B IN UNIT 402, 502, 602, 702**  
SCALE: 1/2" = 1'-0"



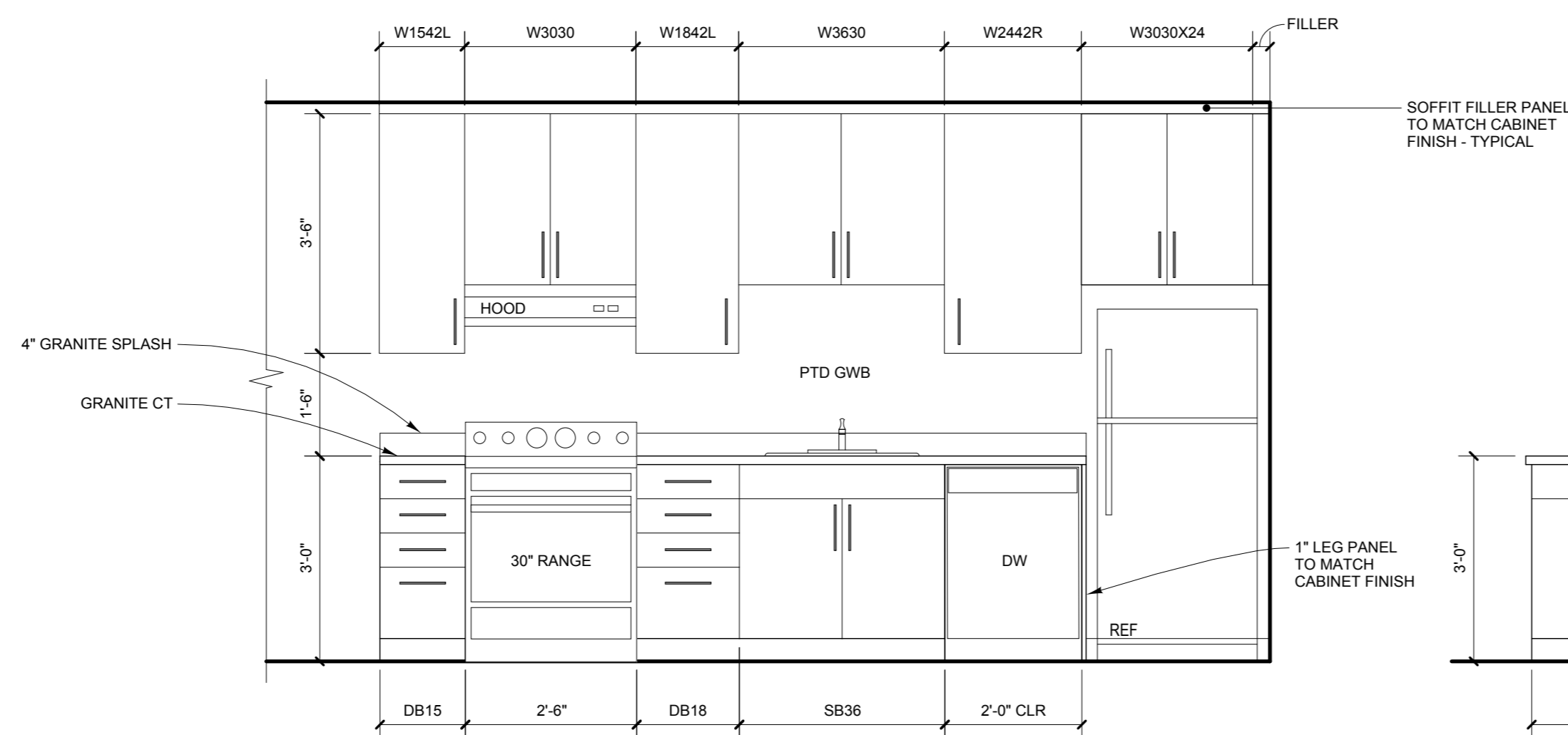
**1**  
**2**



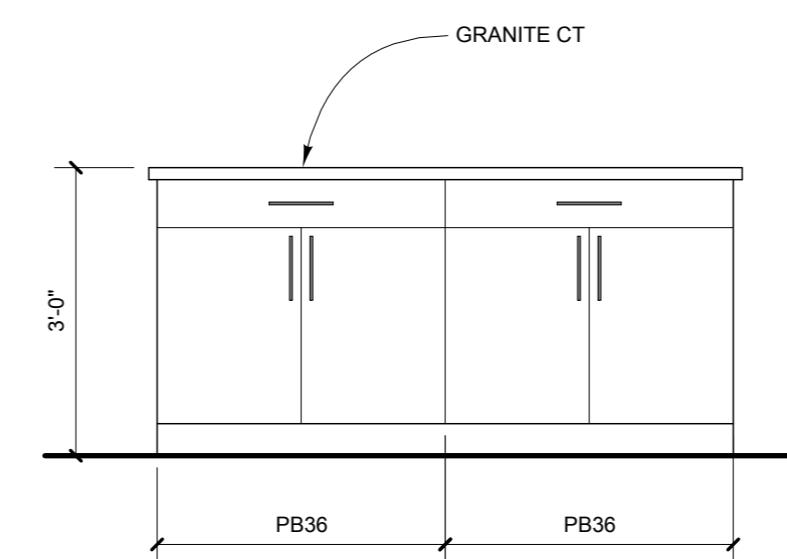
**2**  
**2**



**3 KITCHEN TYPE \"H\" IN UNITS 503, 603, 703**  
SCALE: 1/2" = 1'-0"



**1**  
**3**



**2**  
**3**

LEGEND		SEE SPECIFICATIONS FOR KITCHEN APPLIANCES
CT	COUNTERTOP	
DW	DISHWASHER	
REF	REFRIGERATOR	
PTD	PAINTED	
GWB	DRYWALL	
WD	WOOD	

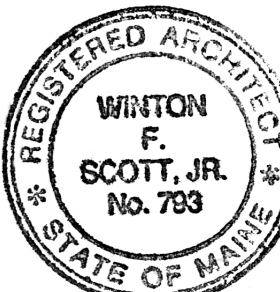
  

GENERAL NOTES	
1	PROVIDE SOLID BLOCKING BEHIND ALL WALL MOUNTED ACCESSORIES AND AT BASE & UPPER CABINETS PER MANUFACTURER RECOMMENDATIONS
2	CABINET NUMBERS ARE BASED ON ARMSTRONG ADVANTA CABINETS.
3	INSULATE ALL EXPOSED PIPES AT SINKS PER ADA REQUIREMENTS, TYPICAL.
4	SEE ELECTRICAL DRAWINGS FOR OUTLET LOCATIONS AND NUMBERS.
5	COUNTER TOPS AND BACKSIDE SPLASH SHALL BE GRANITE
6	RUN WOOD WALL BASE BEHIND ALL APPLIANCES AND ALL REMOVABLE CABINETS WHERE SHOWN



**Winton Scott Architects**  
5 Milk Street  
Portland, Maine 04101  
207 774 4811  
www.wintonscott.com

Architecture / Planning  
Preservation Architecture  
Interior Architecture



*Winton Scott*

ISSUED FOR BUILDING PERMIT ONLY  
03/30/16

Structural Engineer  
Structural Integrity  
Consulting Engineers, Inc.

Owner  
Northland  
Enterprises LLC.

443 Congress

Portland, Maine

Enlarged Plans

Kitchen

1/2" = 1'-0"

**A 7.4**

March 30, 2016