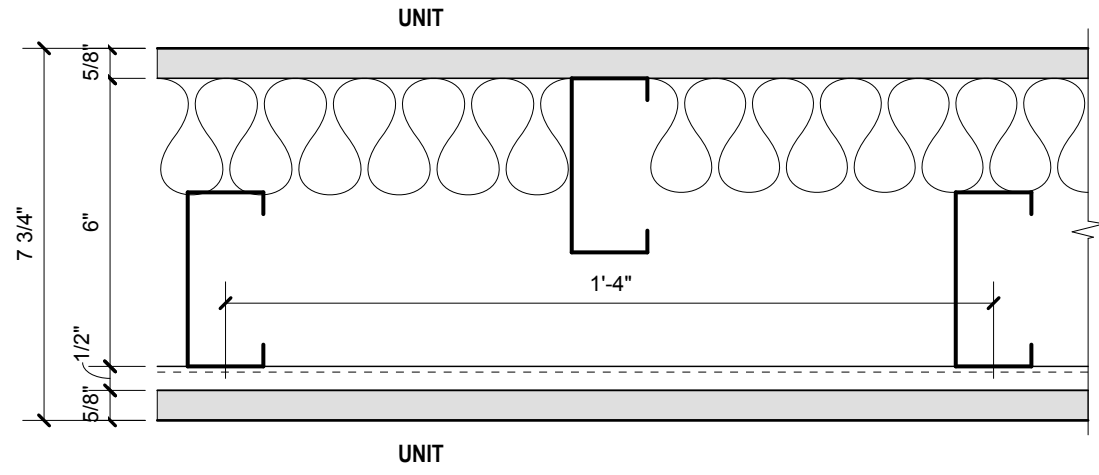
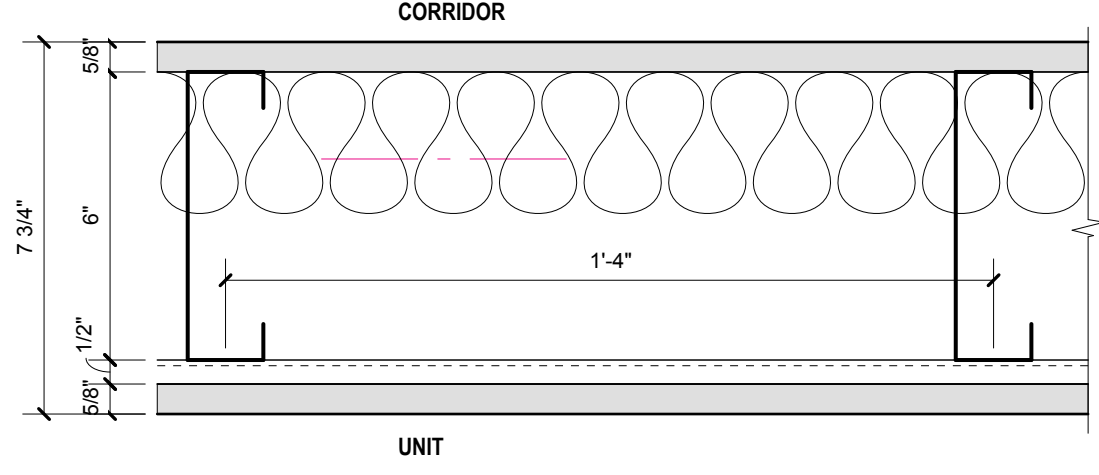


**PARTITION ASSEMBLIES TYPES**

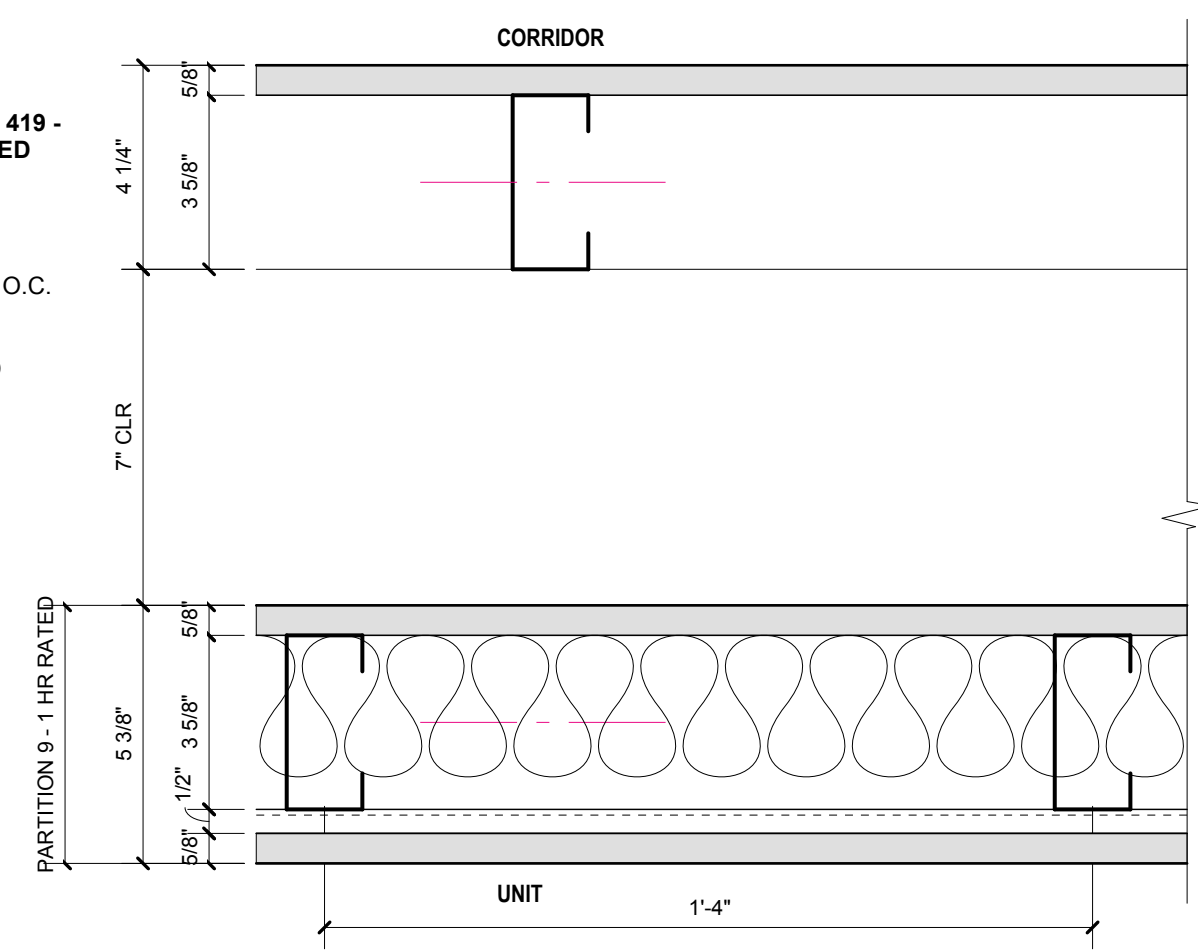
- 1**
- INTERIOR UNIT DEMISING WALL - UL 419 - ONE HOUR FIRE RATED / STC 54 ACOUSTIC RATED**
- 3 5/8" 25 GA MTL STUD @ 16" O.C., ALTERNATED BOTH SIDES OF 6" MTL TRACK
  - 5/8" TYPE X GWB EA SIDE (MR BOARD IN BATHROOM SIDE)
  - 1/2" RESILIENT FURRING CHANNELS 24" O.C. ON ONE SIDE
  - 2" THERMAFIBER BATT FILL
  - ACOUSTIC / FIRE CAULKING BOTH SIDES TOP AND BOTTOM



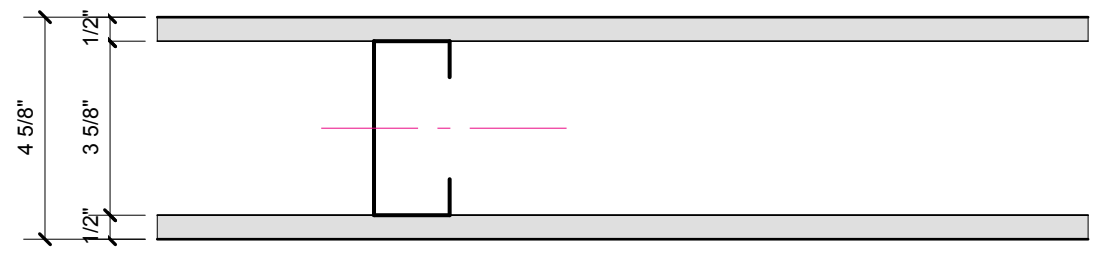
- 2**
- INTERIOR DEMISING WALL - UL 419 - ONE HOUR FIRE RATED / STC 54 ACOUSTIC RATED**
- 6" 25 GA MTL STUD @ 16" O.C.
  - 5/8" TYPE X GWB EA SIDE (MR BOARD IN BATHROOM SIDE)
  - 1/2" RESILIENT FURRING CHANNELS 24" O.C. ON UNIT SIDE
  - 3" THERMAFIBER BATT FILL
  - ACOUSTIC / FIRE CAULKING BOTH SIDES TOP AND BOTTOM



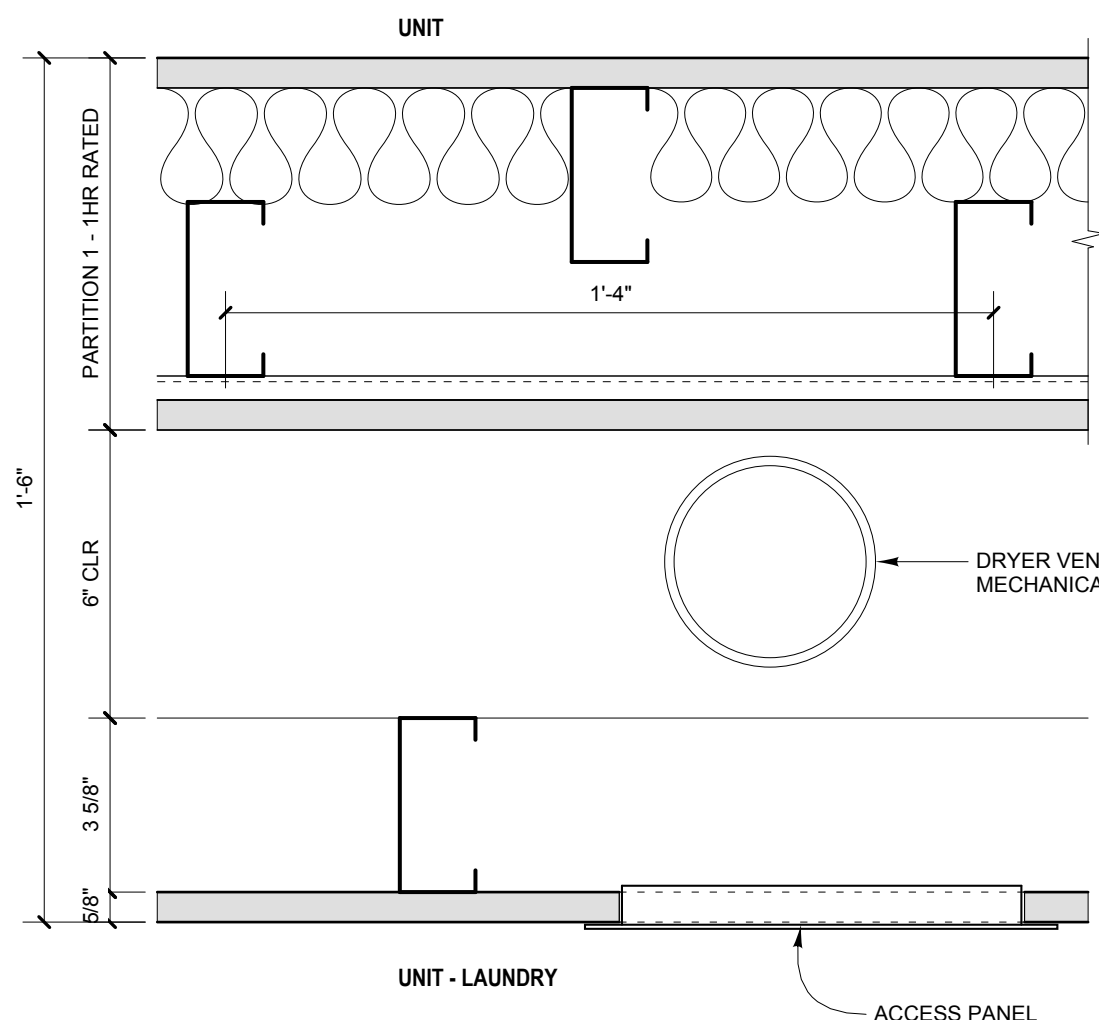
- 3**
- INTERIOR UNIT/CORRIDOR DEMISING WALL - UL 419 - ONE HOUR FIRE RATED / STC 54 ACOUSTIC RATED**
- 3 5/8" 25 GA MTL STUD @ 16" O.C.
  - 5/8" TYPE X GWB EA SIDE (MR BOARD IN BATHROOM SIDE)
  - 1/2" RESILIENT FURRING CHANNELS 24" O.C. ON UNIT SIDE
  - 3" THERMAFIBER BATT FILL
  - ACOUSTIC CAULK BOTH SIDES TOP AND BOTTOM
  - 7" CLEAR SPACE ON CORRIDOR SIDE
  - 3 5/8" MTL STUD @ 16" O.C.
  - 5/8" GWB ON CORRIDOR SIDE



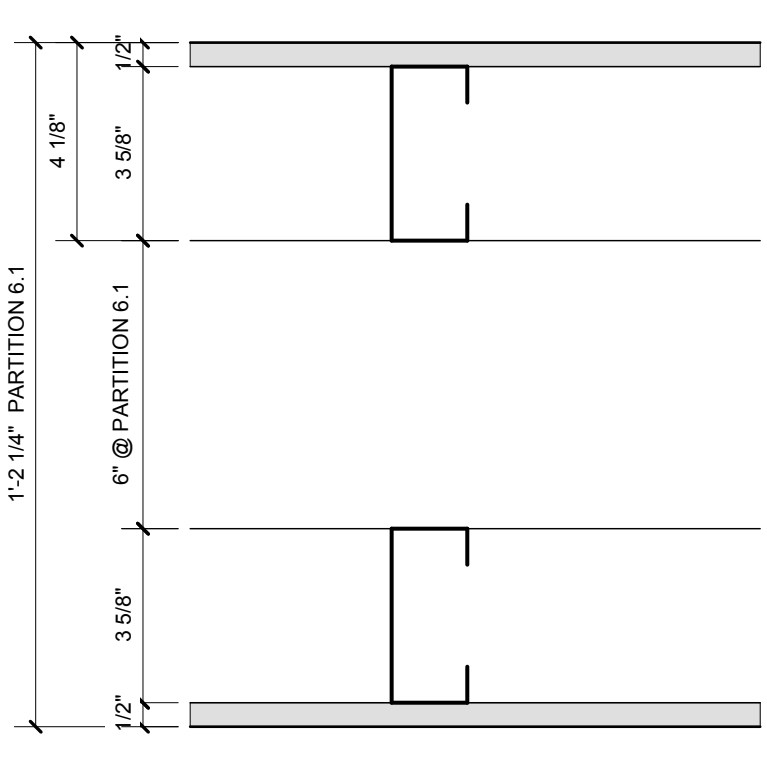
- 4**
- INTERIOR NON-BEARING WALL - NON-RATED PARTITION**
- 3 5/8" 25 GA MTL STUD @ 16" O.C.
  - 1/2" GWB EACH SIDE (USE MR BOARD WHEN IN BATHROOM)
- 4.1**
- 6" 25 GA MTL STUD @ 16" O.C.
  - 1/2" GWB EACH SIDE (USE MR BOARD WHEN IN BATHROOM)



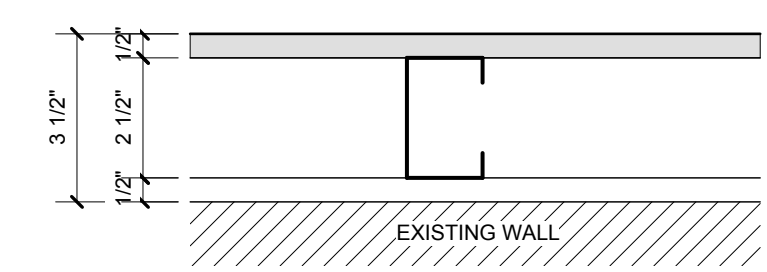
- 5**
- INTERIOR PARTITION AT LAUNDRY - 1HR RATED AT PARTITION 1 - UL419**
- PARTITION 1
  - 6" CLEAR SPACE FOR VENTING PIPES
  - 3 5/8" 25 GA MTL STUD @ 16" O.C.
  - 1/2" MR GWB ON LAUNDRY ROOM SIDE



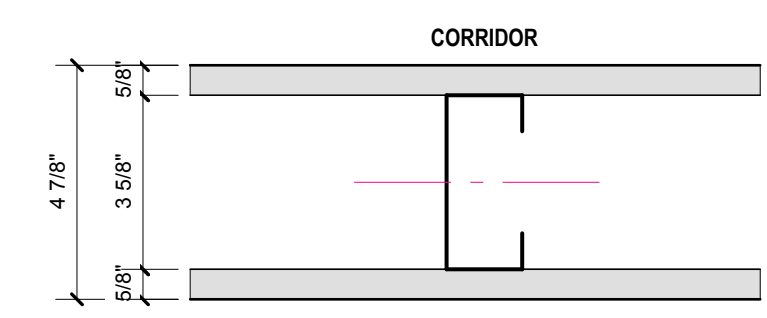
- 6**
- CHASE WALL - NON-RATED PARTITION**
- 3 5/8" 20 GA MTL STUD @ 16" O.C. (6" AT PARTITION 6.2)
  - 1/2" GWB ON ROOM SIDE (USE MR BOARD WHEN IN BATHROOM)
- 6.1**
- AT PARTITION 6.1 & 6.2 ADD THE FOLLOWING:
- 6.2**
- 3 5/8" 20 GA MTL STUD @ 16" O.C.
  - 1/2" GWB ON ROOM SIDE (USE MR BOARD WHEN IN BATHROOM)



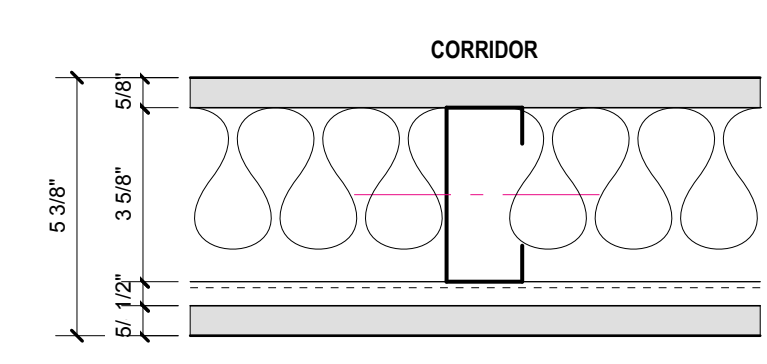
- 7**
- FINISH PARTITION ON EXISTING MASONRY**
- 1/2" GWB ON ROOM SIDE (USE MR BOARD WHEN IN BATHROOM)
  - 2 1/2" 20 GA MTL STUD @ 16" O.C.
  - 1/2" CLR SPACE TO EXISTING WALL



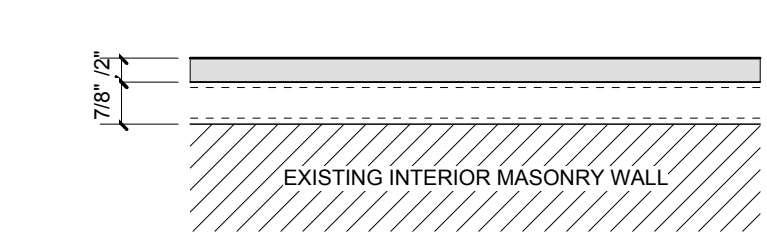
- 8**
- INTERIOR PARTITION - NON RATED**
- 5/8" GWB EACH SIDE
  - 3 5/8" 20 GA MTL STUD @ 16" O.C.



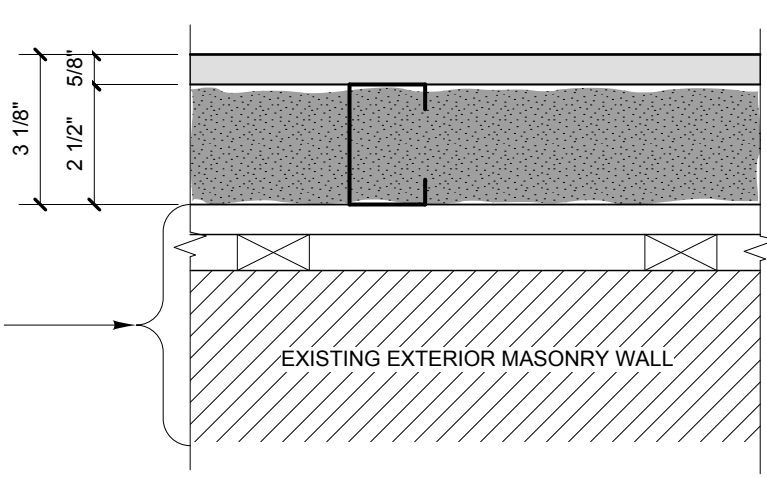
- 9**
- INTERIOR DEMISING PARTITION - ONE HOUR RATED UL 419 / STC 54 ACOUSTIC RATING**
- 5/8" GWB EACH SIDE
  - 3 5/8" 20 GA MTL STUD @ 16" O.C.
  - 1/2" RC1 RESILIENT CHANNEL ON UNIT SIDE
  - ACOUSTIC / FIRE CAULKING BOTH SIDES TOP AND BOTTOM



- 10**
- FINISH PARTITION ON EXISTING**
- 1/2" GWB ON ROOM SIDE (USE MR BOARD WHEN IN BATHROOM)
  - 7/8" RC2 FURRING CHANNEL ON EXISTING WALL

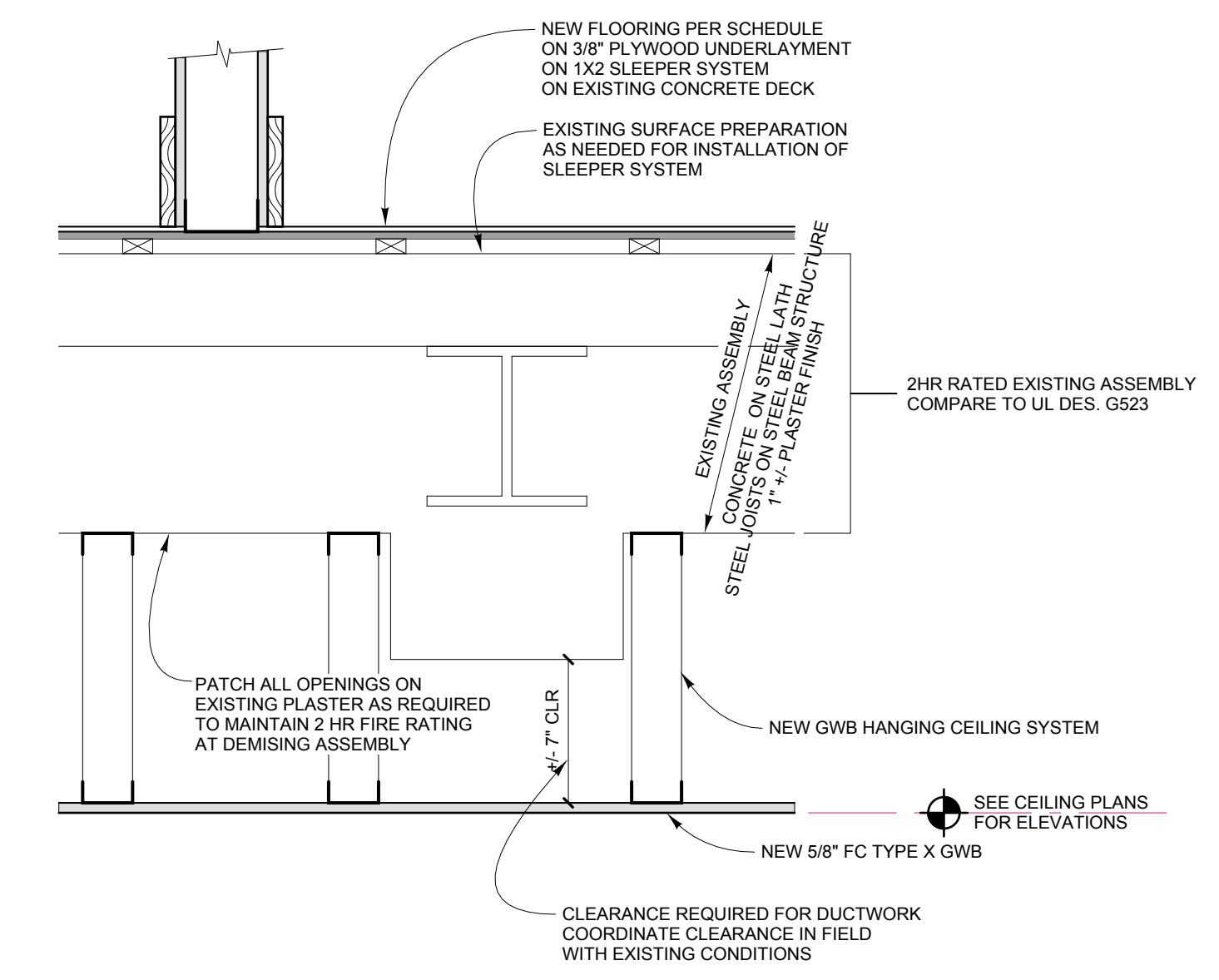


- 11**
- EXTERIOR WALL FINISH - R-15.6**
- 5/8" GWB - PAINTED, TYP
  - ON 2 1/2" MTL STUD @ 16" O.C.
  - ON FACE OF EXISTING PLASTER
  - 2 1/2" HD FOAM IN CAVITY

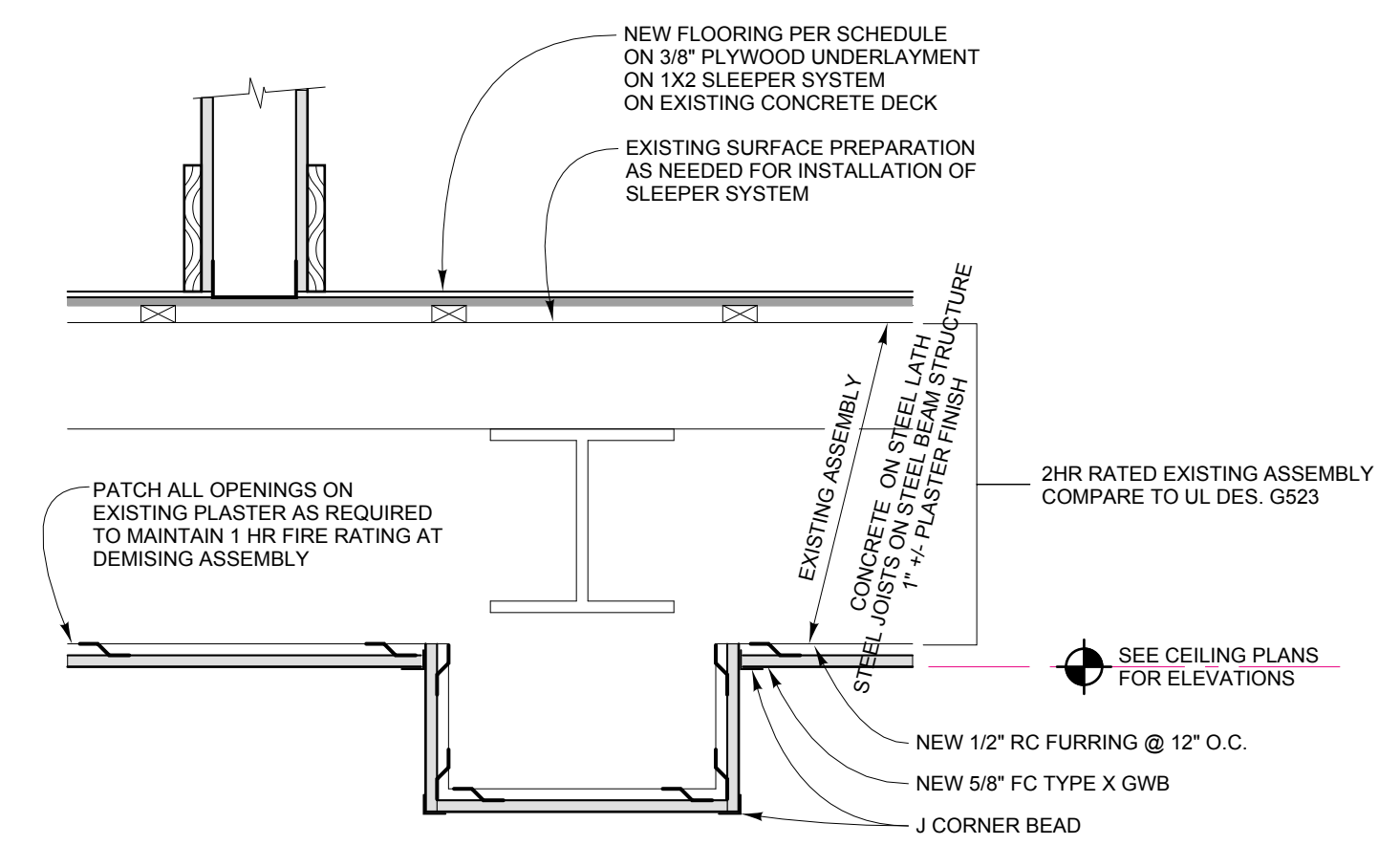


**FLOOR / CEILING ASSEMBLIES TYPES**

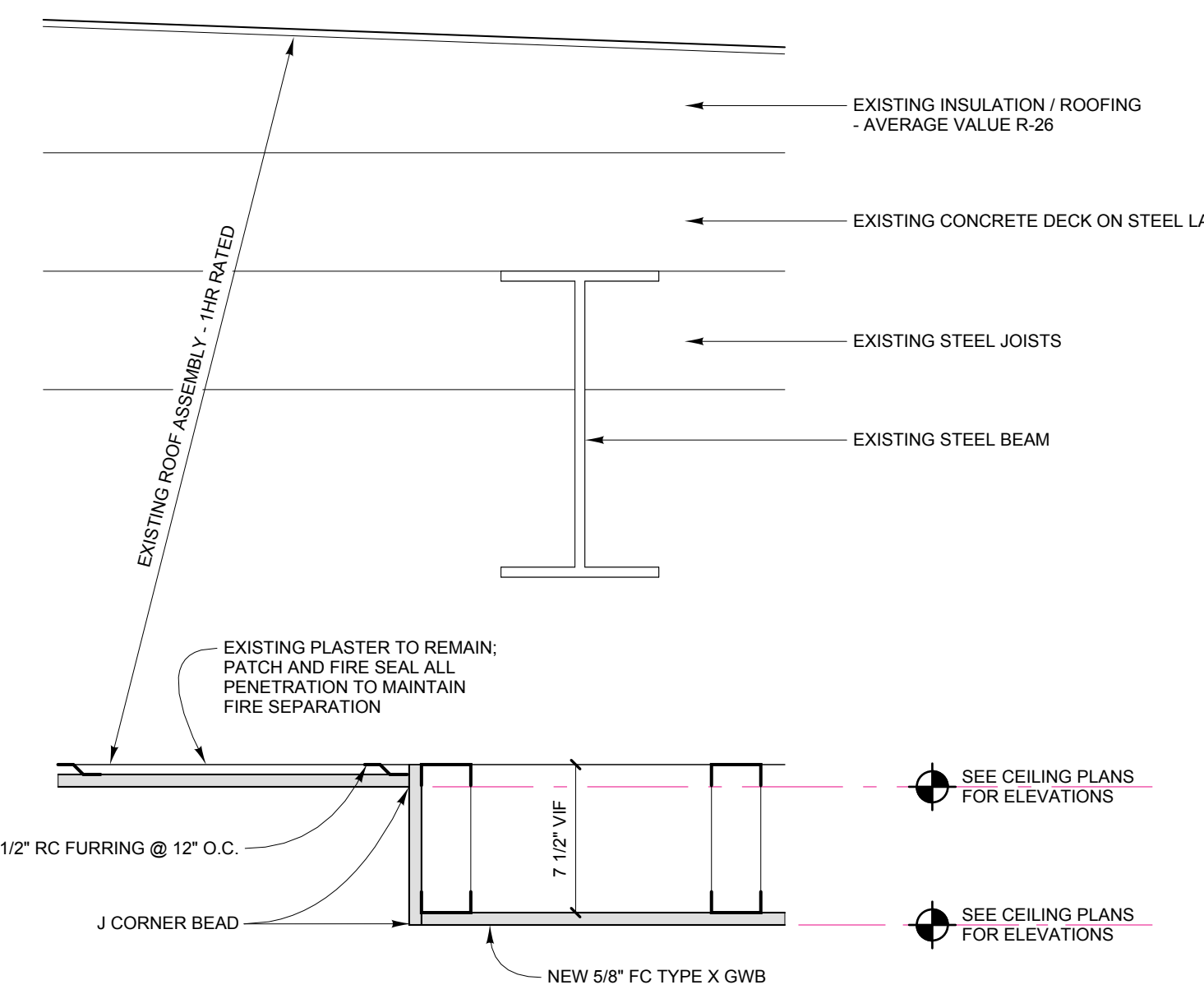
**F1 FLOOR / CEILING ASSEMBLY**  
1 1/2" = 1'-0"



**F2 FLOOR / CEILING ASSEMBLY**  
1 1/2" = 1'-0"



**R1 ROOF / CEILING ASSEMBLY**  
1 1/2" = 1'-0"



- GENERAL NOTES:**
- 1) USE MR BOARD ON WALLS AND CEILING IN ALL BATHROOMS AND LAUNDRY ROOMS - TYPICAL
  - 2) INSTALL ALL FURRING CHANNELS ON WALLS AND CEILING FOLLOWING MANUFACTURERS INSTALLATIONS RECOMMENDATIONS FOR TYPICAL AND SPECIFIC APPLICATIONS
  - 3) ALL EXPOSED SURFACES, PIPES AND ANY ITEMS SHALL BE PAINTED TO MATCH ADJACENT SURFACES OR AS NOTED UNLESS CALLED OTHERWISE



**Winton Scott Architects**  
5 Milk Street  
Portland, Maine 04101  
207 774 4811  
www.wintonscott.com

Architecture / Planning  
Preservation Architecture  
Interior Architecture



ISSUED FOR BUILDING PERMIT ONLY  
03/30/16

Structural Engineer  
Strucutral Integrity  
Consulting Engineers, Inc.

Mechanical / Electrical  
Engineer  
Bennett Engineering

Owner  
Northland  
Enterprises LLC.

443 Congress

Portland, Maine

Partitions &  
Floor/Ceiling  
Assembly Types

3" = 1'-0"

**A 6.1**

March 30, 2016