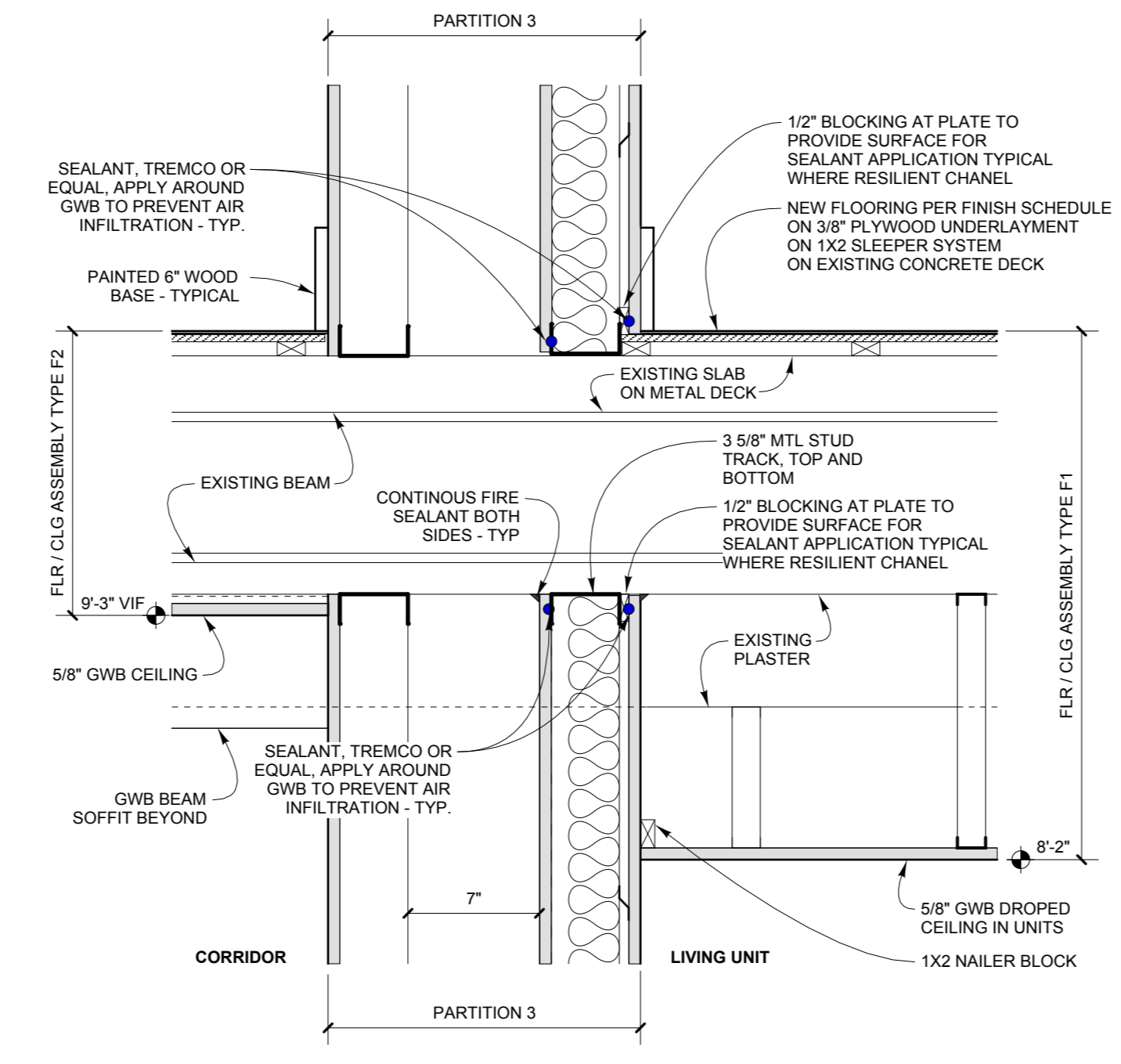
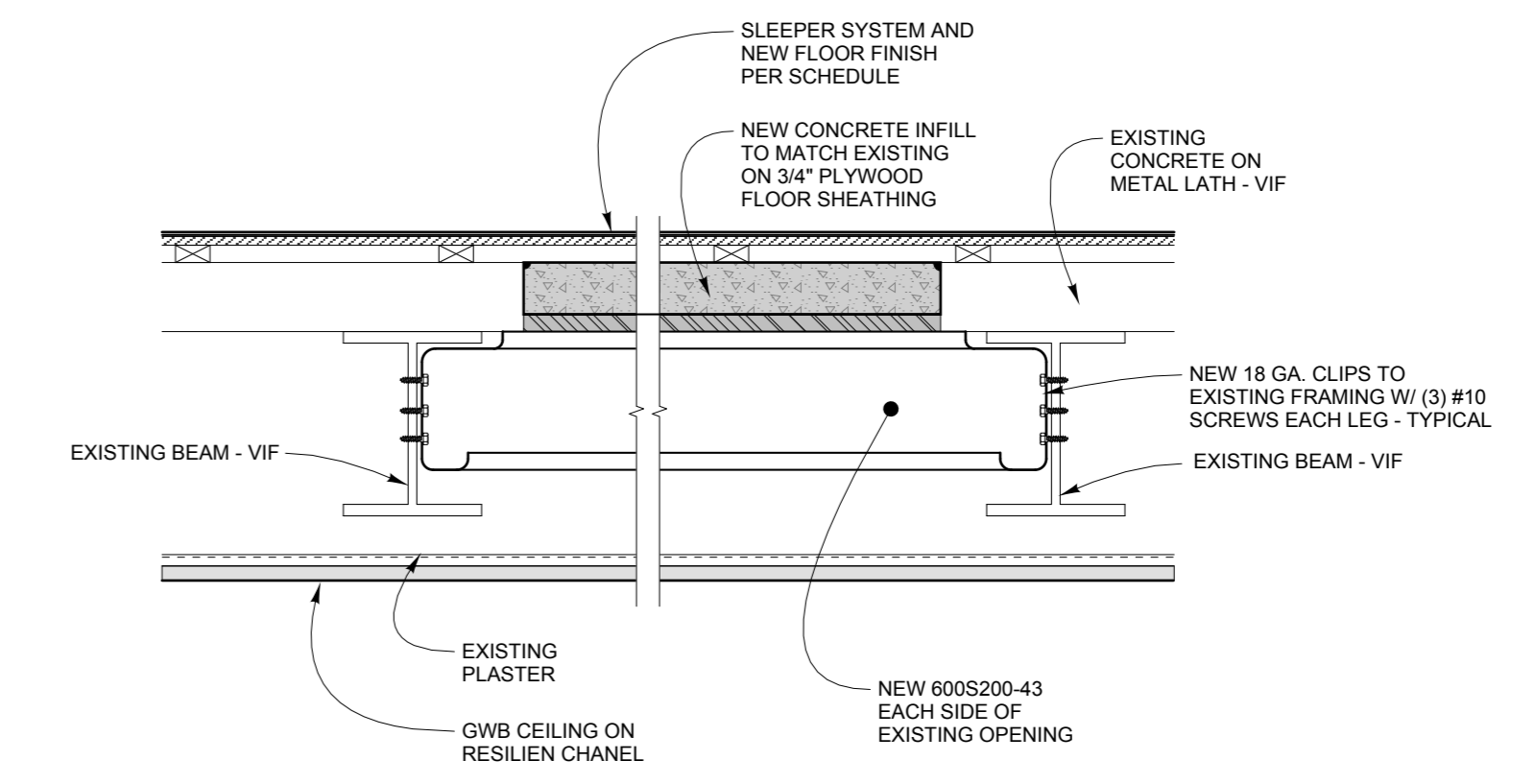


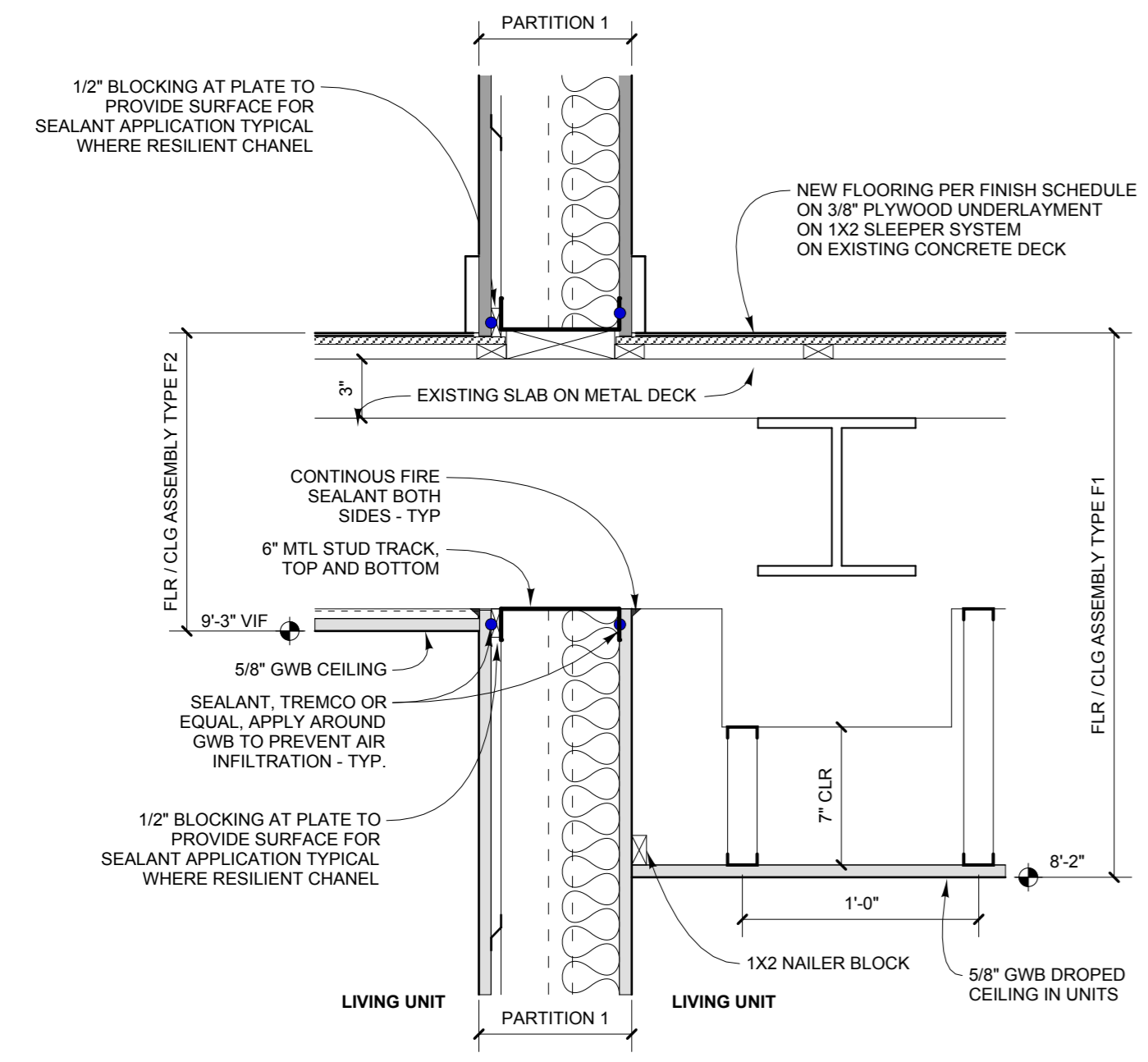
1 SECTION AT DEMISING WALL AT ROOF LEVEL
1 1/2" = 1'-0"



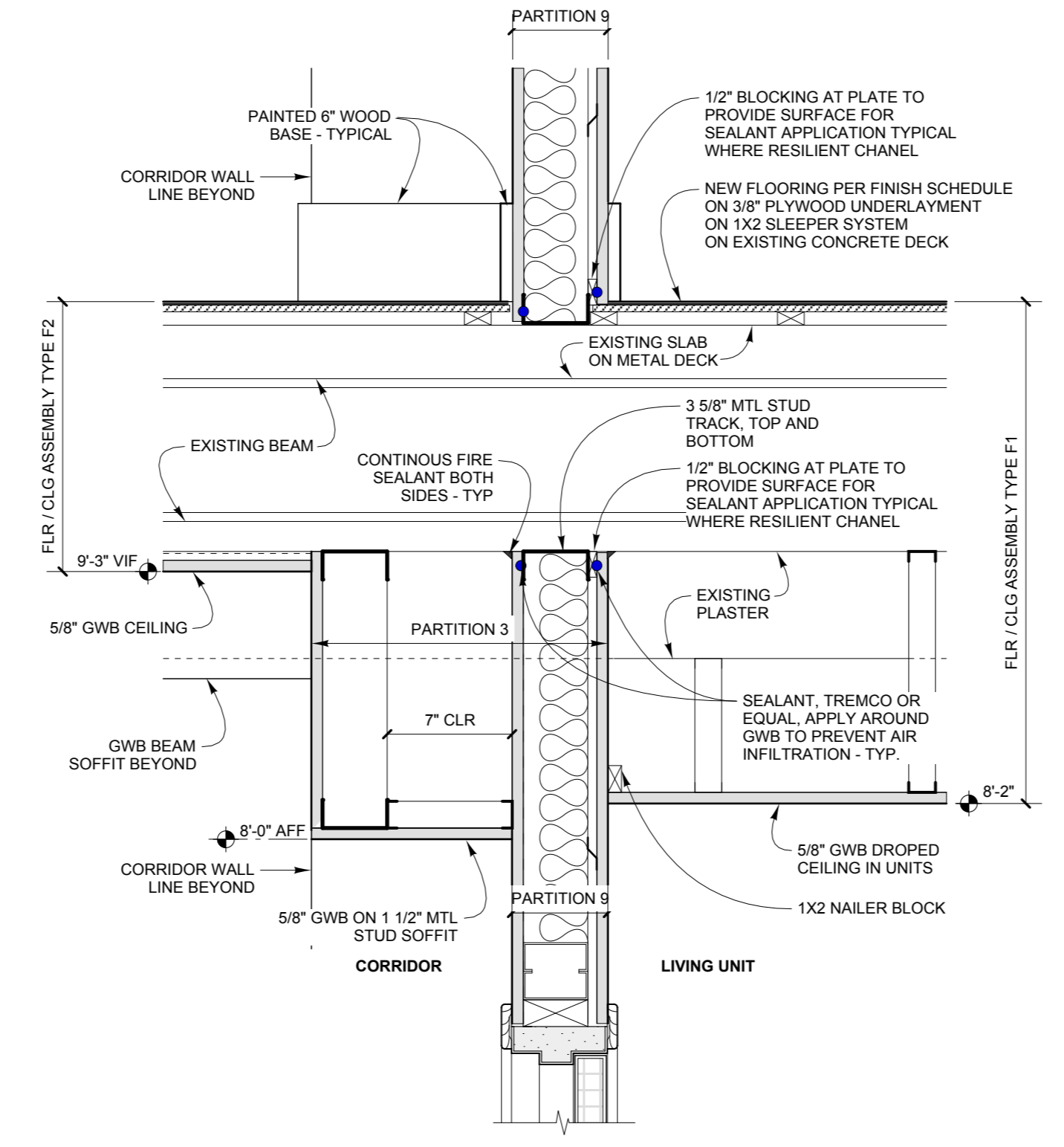
3 SECTION AT CORRIDOR DEMISING WALL AT FLOOR LEVEL
1 1/2" = 1'-0"



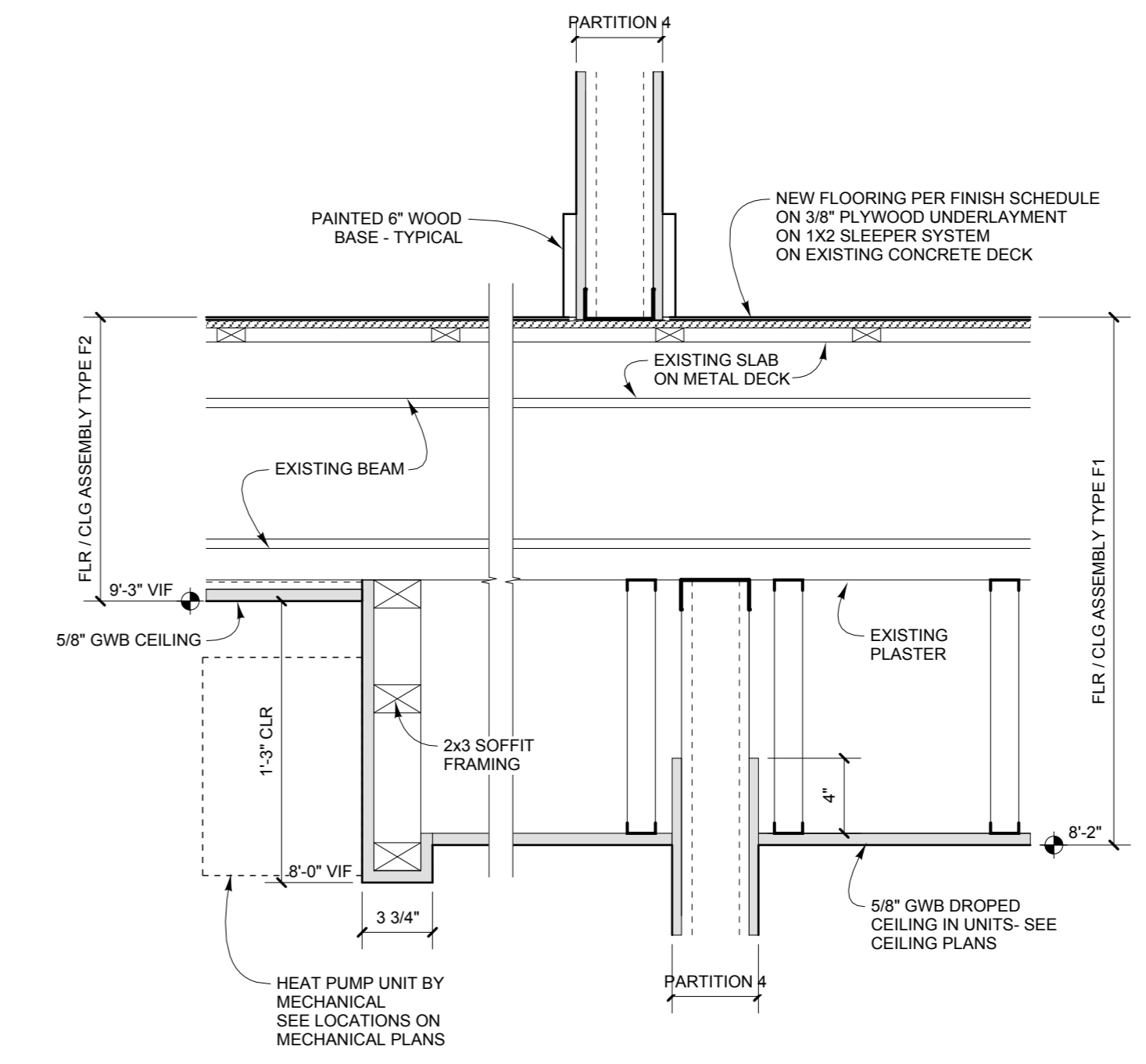
6 SECTION AT FLOOR INFILL ON SEVEN FLOOR
1 1/2" = 1'-0"



2 SECTION AT UNITS DEMISING WALL AT FLOOR LEVEL
1 1/2" = 1'-0"



4 SECTION AT CORRIDOR DEMISING WALL AT UNIT ENTRANCE
1 1/2" = 1'-0"

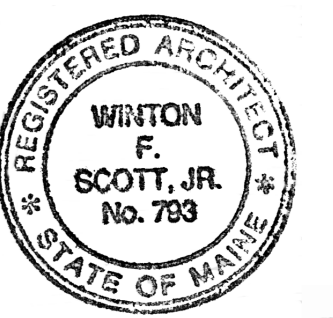


5 SECTION AT UNIT INTERIOR PARTITIONS AND SOFFITS
1 1/2" = 1'-0"



Winton Scott Architects
5 Milk Street
Portland, Maine 04101
207 774 4811
www.wintonscott.com

Architecture / Planning
Preservation Architecture
Interior Architecture



Winton Scott

ISSUED FOR BUILDING
PERMIT ONLY
03/30/16

Structural Engineer
Strucutral Integrity
Consulting Engineers, Inc.

Owner
Northland
Enterprises LLC.

443 Congress

Portland, Maine

Wall Sections

scale as shown

A 4.1

March 30, 2016