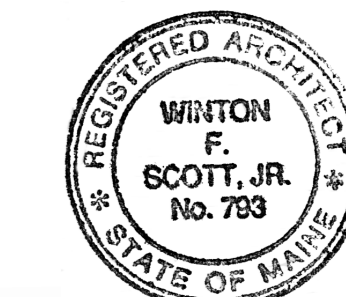


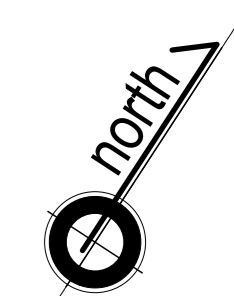


Winton Scott Architects
 5 Milk Street
 Portland, Maine 04101
 207 774 4811
 www.wintonsscott.com

Architecture / Planning
 Preservation Architecture
 Interior Architecture



Winton Scott



ISSUED FOR BUILDING
 PERMIT ONLY
 03/30/16

Structural Engineer
 Strucutral Integrity
 Consulting Engineers, Inc.

Owner
 JJR 443 Congress, LLC

443 Congress

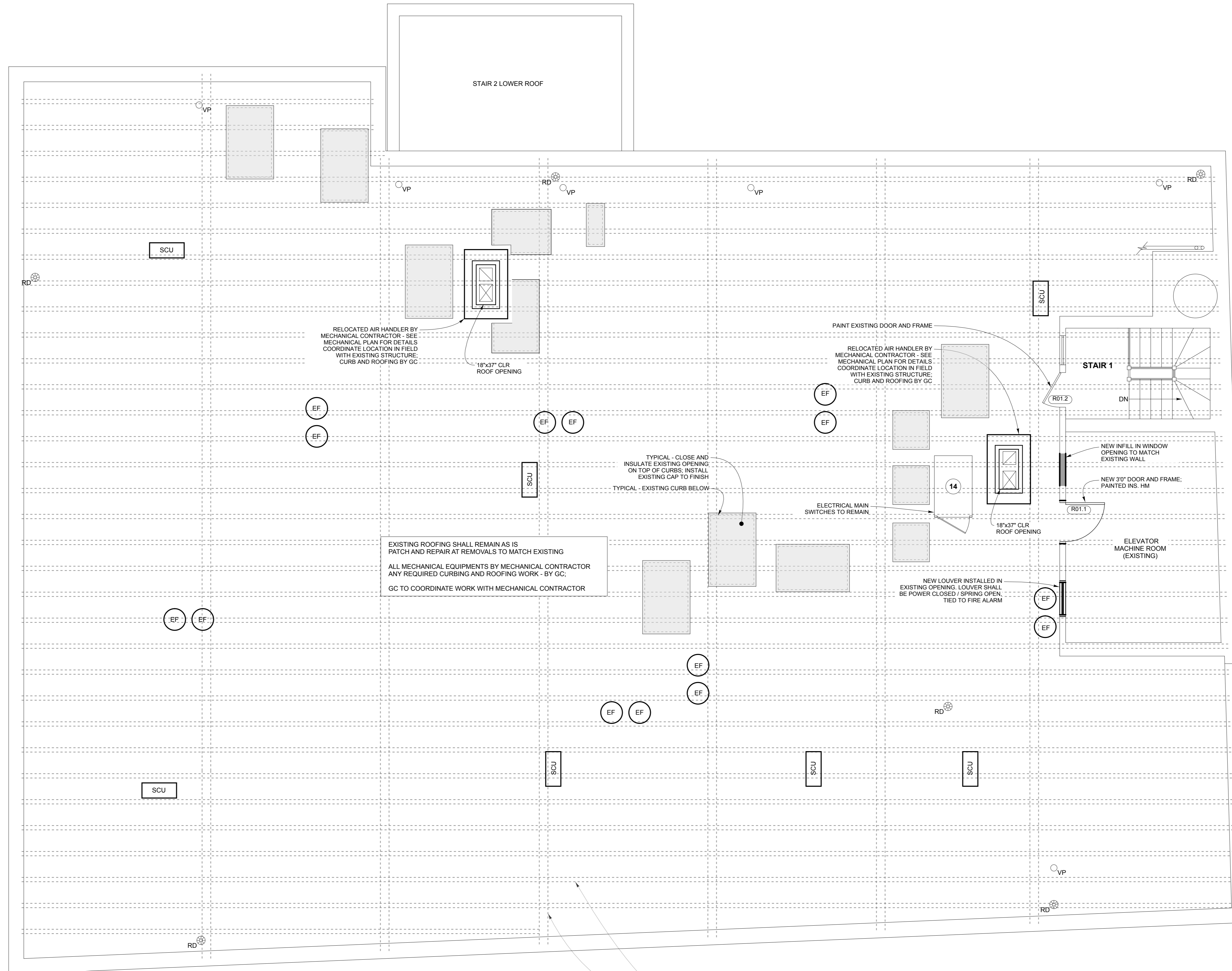
Portland, Maine

Roof Plan
 Proposed

1/4" = 1'-0"

A 1.8

March 30, 2016



RELOCATED AIR HANDLER BY MECHANICAL CONTRACTOR - SEE MECHANICAL PLAN FOR DETAILS. COORDINATE LOCATION IN FIELD WITH EXISTING STRUCTURE. CURB AND ROOFING BY GC.

18'x37' CLR ROOF OPENING

PAINT EXISTING DOOR AND FRAME

RELOCATED AIR HANDLER BY MECHANICAL CONTRACTOR - SEE MECHANICAL PLAN FOR DETAILS. COORDINATE LOCATION IN FIELD WITH EXISTING STRUCTURE. CURB AND ROOFING BY GC.

TYPICAL - CLOSE AND INSULATE EXISTING OPENING ON TOP OF CURB. INSTALL EXISTING CAP TO FINISH.

TYPICAL - EXISTING CURB BELOW

EXISTING ROOFING SHALL REMAIN AS IS. PATCH AND REPAIR AT REMOVALS TO MATCH EXISTING.

ALL MECHANICAL EQUIPMENTS BY MECHANICAL CONTRACTOR. ANY REQUIRED CURBING AND ROOFING WORK - BY GC.

GC TO COORDINATE WORK WITH MECHANICAL CONTRACTOR.

ELECTRICAL MAIN SWITCHES TO REMAIN.

NEW LOUVER INSTALLED IN EXISTING OPENING. LOUVER SHALL BE POWER CLOSED / SPRING OPEN. TIED TO FIRE ALARM.

NEW INFILL IN WINDOW OPENING TO MATCH EXISTING WALL.

NEW 3'0" DOOR AND FRAME. PAINTED INS. HM.

BEAMS AND JOIST @24" O.C. - ACTUAL LOCATIONS TO BE VERIFIED IN FIELD AND COORDINATED WITH MECHANICAL PENETRATIONS