



Winton Scott



ISSUED FOR BUILDING
 PERMIT ONLY
 03/30/16

Structural Engineer
 Strucutral Integrity
 Consulting Engineers, Inc.

Owner
 JJR 443 Congress, LLC

443 Congress

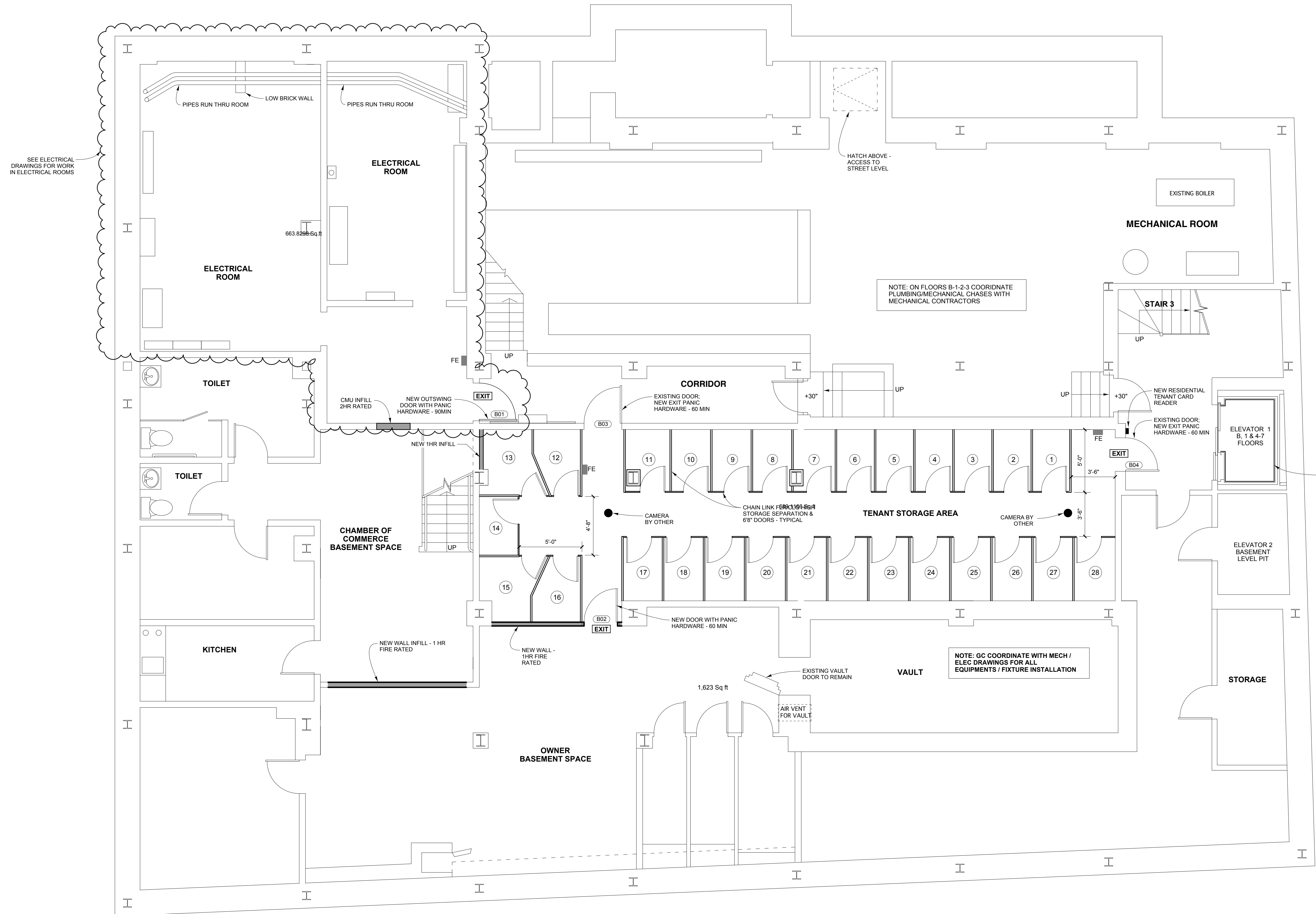
Portland, Maine

Basement
 Proposed Plan

1/4" = 1'-0"

A 1.0

March 30, 2016



EXISTING ELEVATOR
 DOORS AND CAR WITH
 NEW CAR FINISHES -
 TYPICAL

NOTE: GC COORDINATE WITH MECH /
 ELEC DRAWINGS FOR ALL
 EQUIPMENTS / FIXTURE INSTALLATION

NOTE: ON FLOORS B-1-2-3 COORDINATE
 PLUMBING/MECHANICAL CHASES WITH
 MECHANICAL CONTRACTORS

SEE ELECTRICAL
 DRAWINGS FOR WORK
 IN ELECTRICAL ROOMS