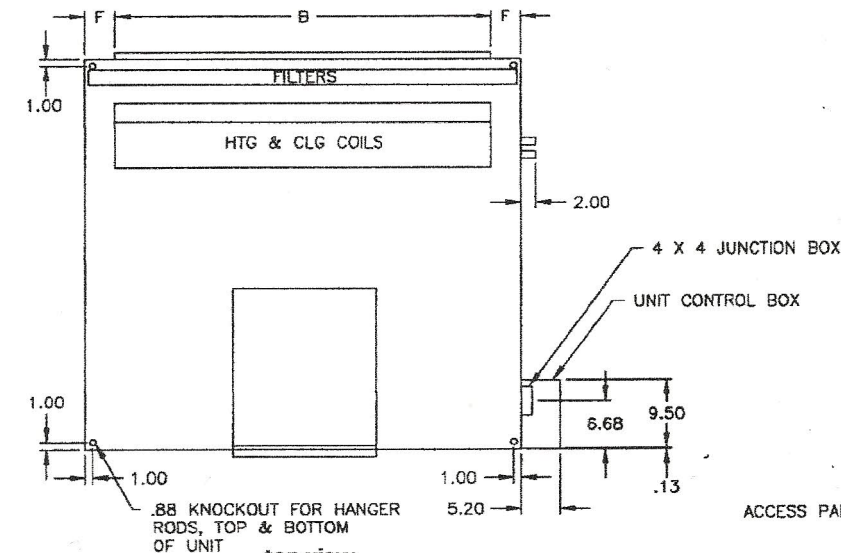


Dimensions and Weights

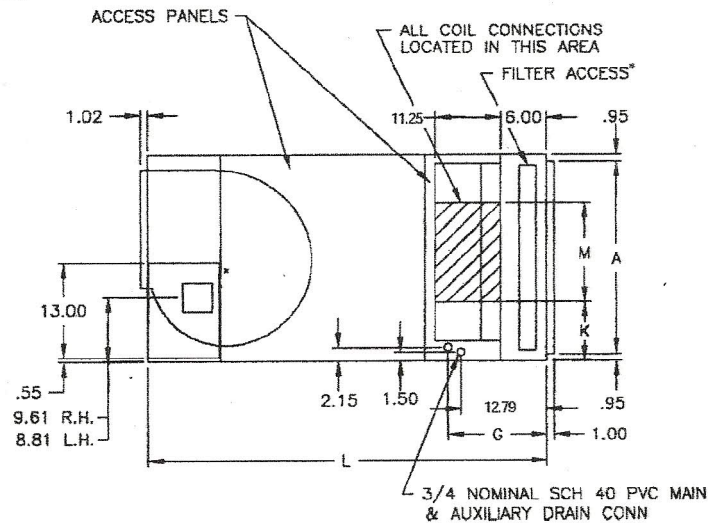
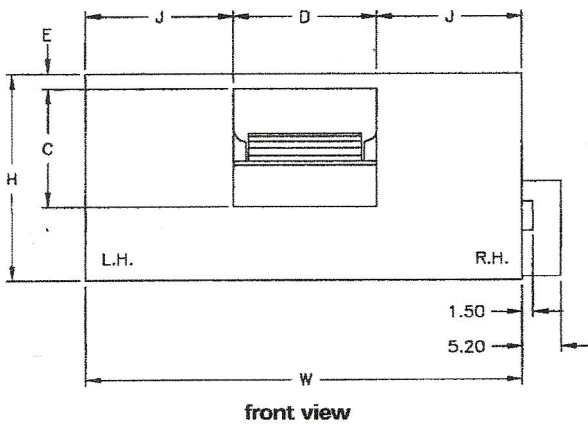
Installation

Horizontal Blower Coil



NOTES: ALL DIMENSIONS ARE IN INCHES.
 ALL COIL CONNECTIONS ARE SWEAT STYLE.
 WEIGHT OF BASIC UNIT INCLUDES CABINET, FAN, AVERAGE DRIVE, WIRING AND AVERAGE FILTER. IT DOES NOT INCLUDE COIL, MOTOR OR SHIPPING PACKAGE. PLEASE REFER TO CATALOG FOR MOTOR WEIGHTS.
 *ADD TO BASIC UNIT WEIGHT, 9 LBS FOR WEIGHT OF CONTROL BOX.
 4 X 4 JUNCTION BOX OR CONTROL BOX FACTORY MOUNTED ON DRIVE SIDE.

*NOTE: ON UNITS WITHOUT A BOTTOM FILTER ACCESS SECTION



right side view

Horizontal Blower Coil Unit Dimensions and Weights, in-lbs.

Unit Size	H	W	L	A	B	C	D	E	F	G (RH)	G (LH)	J	K	M	unit weight
12	14.00	24.00	40.75	12.09	18.00	10.56	7.09	0.55	3.00	10.79	14.79	8.46	2.82	6.80	71.5
18	14.00	28.00	40.75	12.09	22.00	10.56	7.09	0.55	3.00	10.79	14.79	10.46	2.82	6.80	77.4
24	18.00	28.00	46.00	16.09	22.00	13.56	12.56	1.30	3.00	10.79	14.79	7.72	3.58	9.00	104.1
36	18.00	40.00	46.00	16.09	34.00	13.56	12.56	1.30	3.00	10.79	14.79	13.72	3.57	9.00	121.6
54	22.00	40.00	49.00	20.09	34.00	13.56	12.56	0.72	3.00	10.79	14.79	13.72	4.21	10.43	138.9
72	22.00	48.00	49.00	20.09	40.00	13.56	12.56	0.72	4.00	10.79	14.79	17.72	4.18	10.43	152.2
90	28.00	48.00	52.00	26.09	40.00	13.56	12.56	1.66	4.00	10.79	14.79	17.72	4.81	15.61	174.8