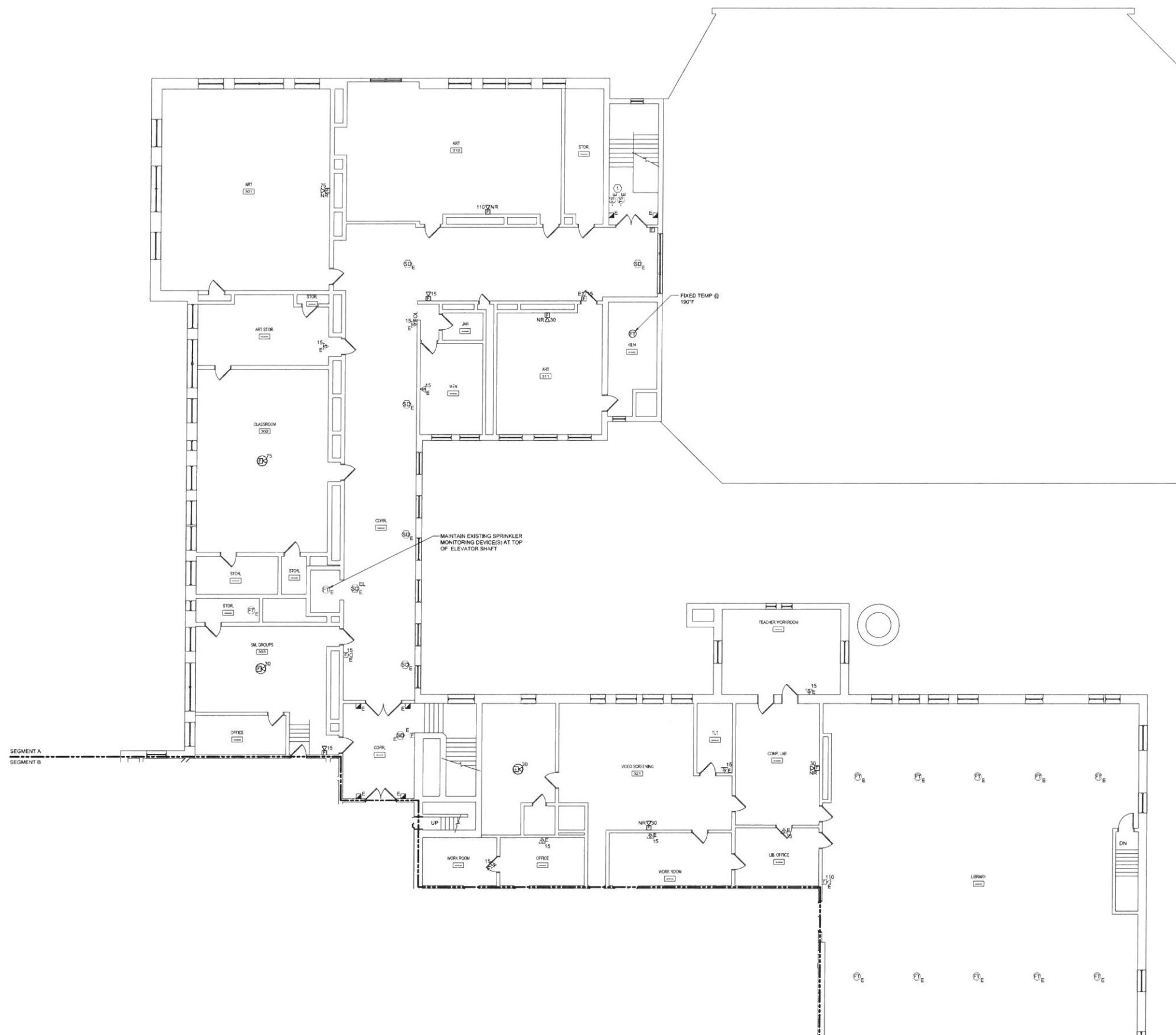
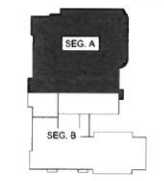


5/2/2016 9:44 AM T:\02 PROJECTS - WME\4001-1100\4100 PORTLAND HIGH SCHOOL FIRE ALARM SYSTEM\DESIGN\DWG\PORTLAND HIGH SCHOOL EXISTING DRAWINGS\THIRD FLOOR - SEG. A FIRE ALARM PLAN.DWG - WTELEMAN



GENERAL NOTES:
 1. TO THE EXTENT POSSIBLE, INSTALL FIRE ALARM CABLES IN SPECIFIED UNENCLOSED WIRING METHOD ABOVE ACCESSIBLE CEILING.

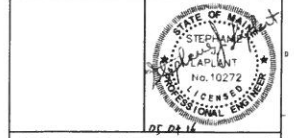
TECHNICAL NOTES:
 1. MAINTAIN EXISTING SPRINKLER FLOW, TAMPER AND/OR PRESSURE SWITCHES WITHIN THIS SPACE. INSTALL MONITOR MODULES AS REQUIRED TO CONNECT TO FIRE ALARM SYSTEM ADDRESSABLE LOOP.



- KEY PLAN**
- LEGEND:**
- E EXISTING TO REMAIN
 - ER EXISTING RELOCATED
 - NR NEW TO REPLACE EXISTING IN EXISTING LOCATION
 - R EXISTING TO BE REMOVED
 - RR REMOVE & RELOCATE EXISTING
 - HA FIRE ALARM HORN / LIGHT
 - MS MULTI-CANDELA STROBE
 - MSX MULTI-CANDELA HORN/STROBE
 - MSM CEILING MOUNTED MULTI-CANDELA HORN/STROBE
 - ET FIRE ALARM SYSTEM CEILING MOUNTED HEAT DETECTOR - "EL" FOR ELEVATOR SHUNT TRIP
 - ESD FIRE ALARM SYSTEM CEILING MOUNTED SMOKE DETECTOR - "EL" FOR ELEVATOR RECALL
 - EM WALL MOUNTED FIRE ALARM SYSTEM MANUAL PULL STATION
 - KB KNOX BOX
 - JB JUNCTION BOX
 - DOOR HOLD-OPEN DEVICE CONNECTION
 - FPS FIRE ALARM SYSTEM/SPRINKLER SYSTEM PRESSURE SWITCH
 - FSS FIRE ALARM SYSTEM/SPRINKLER SYSTEM FLOW SWITCH
 - FSSW FIRE ALARM SYSTEM/SPRINKLER SYSTEM TAMPER SWITCH
 - FSDM FIRE ALARM SYSTEM DUCT MOUNTED SMOKE DETECTOR
 - FACP FIRE ALARM SYSTEM CONTROL PANEL
 - FAN FIRE ALARM ANNUNCIATOR
 - GS GAS SHUT-OFF
 - RTB RADIO TRANSMITTER BOX
 - MM MONITOR MODULE
 - TS TEST STATION
 - RM RELAY MODULE
 - AGT ANSUL GAS TANK
 - FAM FIRE ALARM AMPLIFIER

---	---
---	---
---	---
0	ISSUED FOR BID 05.04.16
REV.	DESCRIPTION DATE

ISSUED FOR BID
 05.04.16



WBRC
 ARCHITECTS + ENGINEERS
 404100
 1000 W. BROAD ST. #100
 PORTLAND, ME 04101-4100
 518.450.7411

**PORTLAND HIGH SCHOOL
 FIRE ALARM UPGRADES - PHASE 1**

PROJECT: PORTLAND, ME

THIRD FLOOR - SEG. A FIRE ALARM PLAN

SHEET TITLE:	404100 - FA104A
PROJECT NO.:	404100
SCALE:	AS NOTED
PROJECT MANAGER:	S.J.L.
DRAWN BY:	KRM
CHECKED BY:	L.W.
SHEET NO.:	FA104A

A1 THIRD FLOOR - SEG. A FIRE ALARM PLAN
 1/8" = 1'-0"