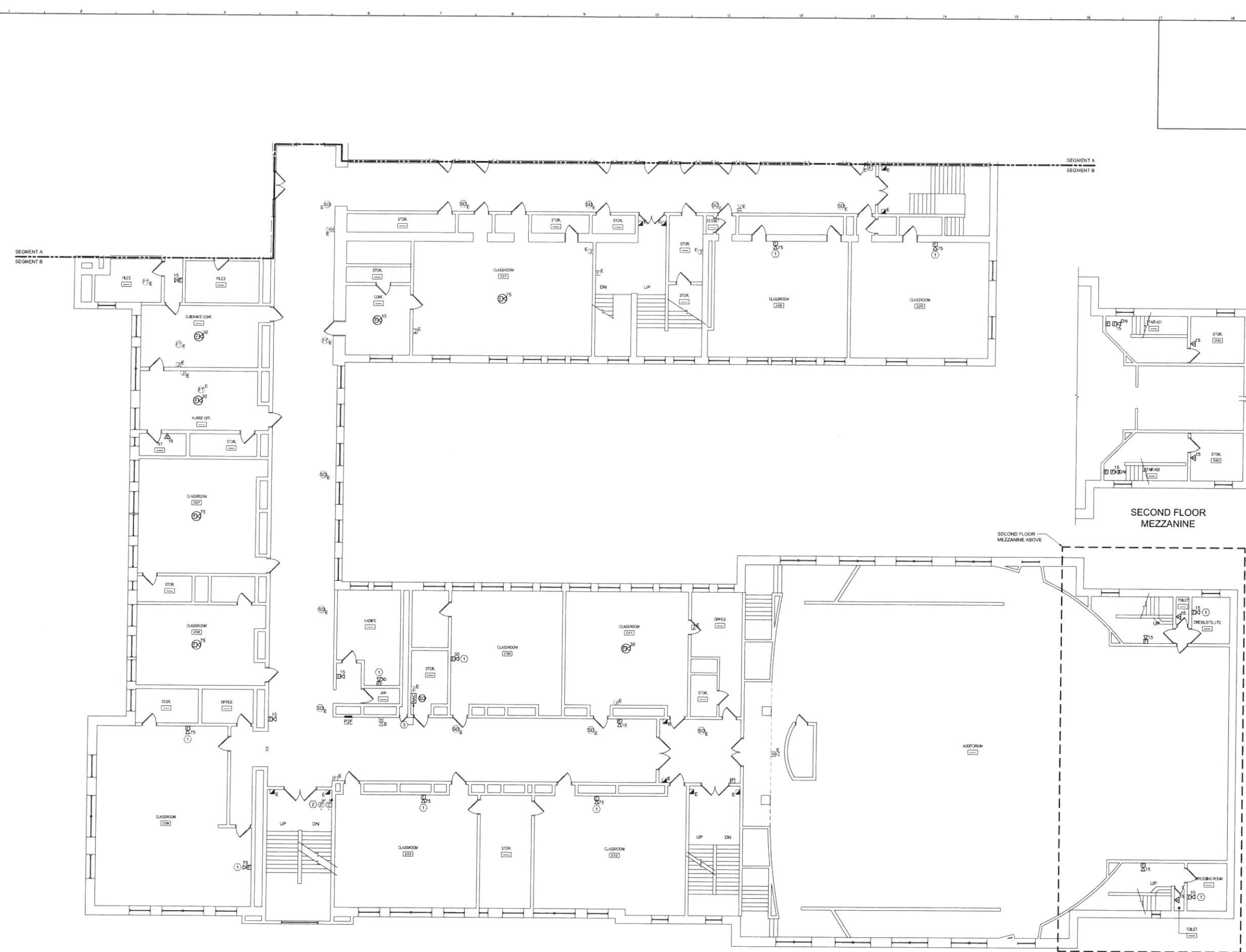


5/2/2016 9:04 AM 1:02 PROJECTS - MAINE 0001-1100-04-100 PORTLAND HIGH SCHOOL FIRE ALARM SYSTEM DESIGN/UNOS/VALD/PORTLAND SCHOOL EXISTING DRAWINGS/VALD/PORTLAND SECOND FLOOR - SEG. B FIRE ALARM PLAN/DC - SEG. B FIRE ALARM PLAN/DC - PCL/ML/MAHAR

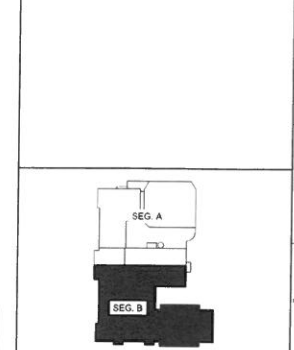


**GENERAL NOTES:**

- TO THE EXTENT POSSIBLE, INSTALL FIRE ALARM CABLES IN SPECIFIED UNENCLOSED WIRING METHOD ABOVE ACCESSIBLE CEILING.

**TECHNICAL NOTES:**

- UTILIZE EXISTING JUNCTION BOX AT THIS LOCATION FOR NEW FIA DEVICE.
- MAINTAIN EXISTING SPRINKLER FLOW, TAMPER AND/OR PRESSURE SWITCHES WITHIN THIS SPACE. INSTALL MONITOR MODULES AS REQUIRED TO CONNECT TO FIRE ALARM SYSTEM ADDRESSABLE LOOP.
- CONNECT POWER FOR NAC EXTENDER TO EXISTING POLE SPACE IN EXISTING PANEL P2F. PANEL IS WESTINGHOUSE TYPE FRL1.



- KEY PLAN**
- LEGEND:**
- E EXISTING TO REMAIN
  - ER EXISTING RELOCATED
  - NR NEW TO REPLACE EXISTING IN EXISTING LOCATION
  - R EXISTING TO BE REMOVED
  - RR REMOVE & RELOCATE EXISTING
  - FH FIRE ALARM HORN / LIGHT
  - MS MULTI-CANDELA STROBE
  - MCS MULTI-CANDELA HORN/STROBE
  - SD CEILING MOUNTED MULTI-CANDELA HORN/STROBE
  - SC FIRE ALARM SYSTEM CEILING MOUNTED HEAT DETECTOR - 'EL' FOR ELEVATOR SHUNT TRIP
  - SDS FIRE ALARM SYSTEM CEILING MOUNTED SMOKE DETECTOR - 'EL' FOR ELEVATOR RECALL
  - MF WALL MOUNTED FIRE ALARM SYSTEM MANUAL PULL STATION
  - KB KNOX BOX
  - JB JUNCTION BOX
  - DH DOOR HOLD-OPEN DEVICE CONNECTION
  - FSPS FIRE ALARM SYSTEM/SPRINKLER SYSTEM PRESSURE SWITCH
  - FSS FIRE ALARM SYSTEM/SPRINKLER SYSTEM FLOW SWITCH
  - FST FIRE ALARM SYSTEM/SPRINKLER SYSTEM TAMPER SWITCH
  - SDS FIRE ALARM SYSTEM DUCT MOUNTED SMOKE DETECTOR
  - FACP FIRE ALARM SYSTEM CONTROL PANEL
  - FAN FIRE ALARM ANNUNCIATOR
  - GS GAS SHUT-OFF
  - RTB RADIO TRANSMITTER BOX
  - MM MONITOR MODULE
  - TS TEST STATION
  - RM RELAY MODULE
  - AGT ANSUL GAS TANK
  - FAA FIRE ALARM AMPLIFIER

ISSUED FOR BID	05.04.16
REV	DESCRIPTION
0	ISSUED FOR BID
1	ISSUED FOR BID

**ISSUED FOR BID**  
05.04.16



**WBRC**  
ARCHITECTS • ENGINEERS  
100 W. BROAD ST. 11TH FLOOR  
PORTLAND, MAINE 04101-4411  
503.875.1111 FAX 503.875.1111  
503.875.1111 TOLL FREE 1-800-541-1111

**PORTLAND HIGH SCHOOL  
FIRE ALARM UPGRADES - PHASE 1**

PROJECT: PORTLAND, ME  
**SECOND FLOOR - SEG. B FIRE ALARM PLAN**

SHEET NO.	404100 - FA103B
PROJECT NO.	404100
SCALE	AS NOTED
PROJECT MANAGER	S.J.L.
DRAWN BY	K.R.M.
CHECKED BY	S.J.L.
SHEET NO.	<b>FA103B</b>

**A1 SECOND FLOOR - SEG. B FIRE ALARM PLAN**

1/8" = 1'-0"