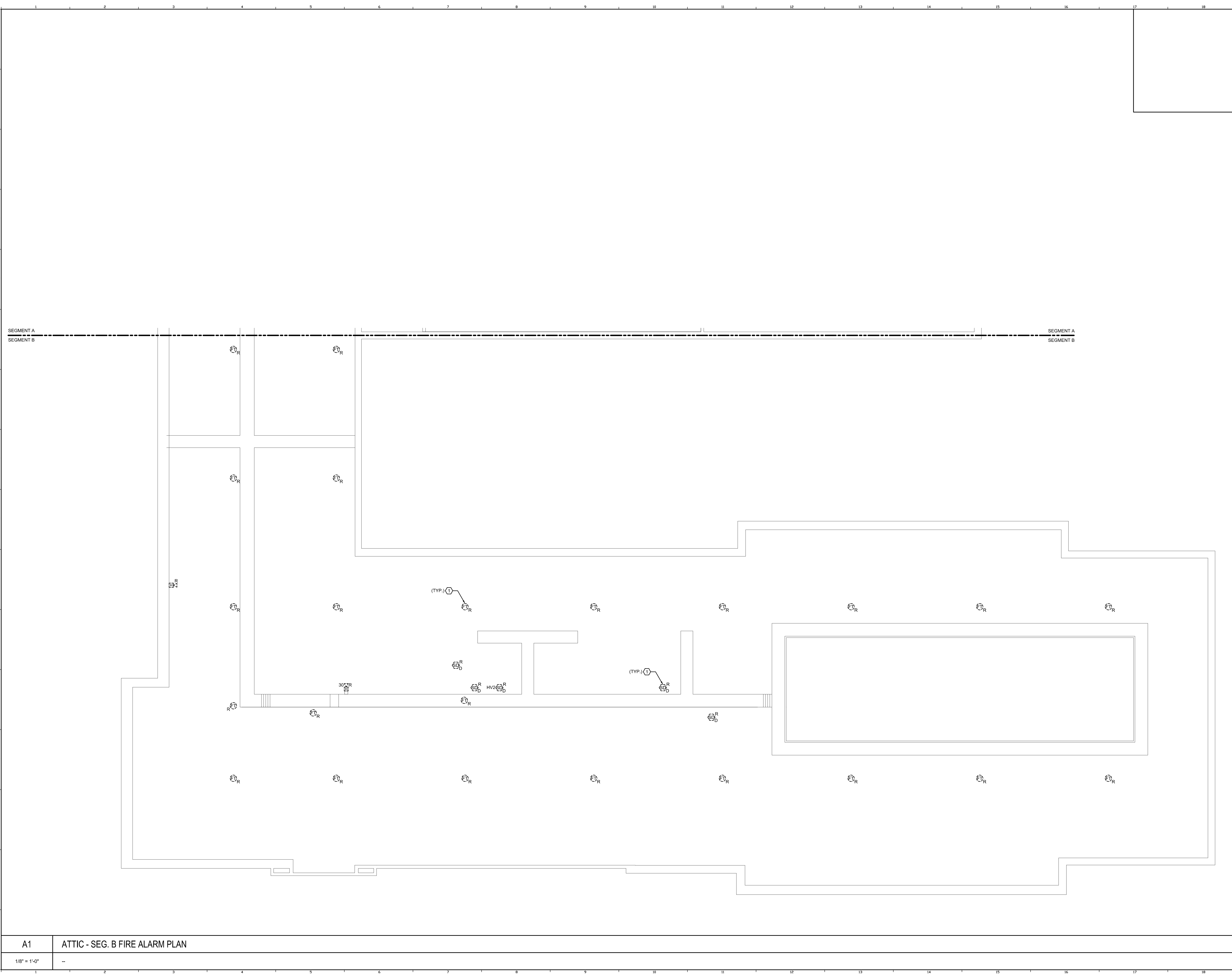
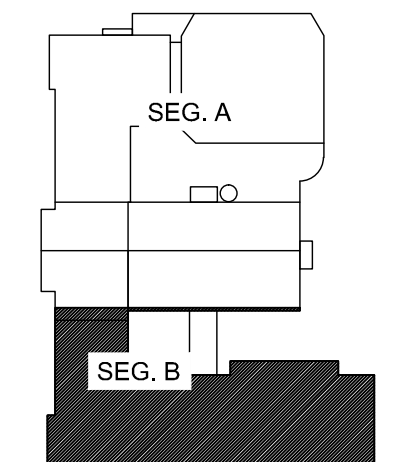


6/16/2015 2:44 PM I:\401-1100\401100 PORTLAND HIGH SCHOOL EXISTING DRAWINGS SHEETS\0105B ATTIC - SEG. B FIRE ALARM PLAN.DWG KYLE MAHR



TECHNICAL NOTES:
 ① HEAT AND DUCT SMOKE DETECTORS ARE SHOWN DIAGRAMMATICALLY WITHIN THIS ROOM. CONTRACTOR SHALL FIELD LOCATE EACH DETECTOR AND REMOVE AS REQUIRED.

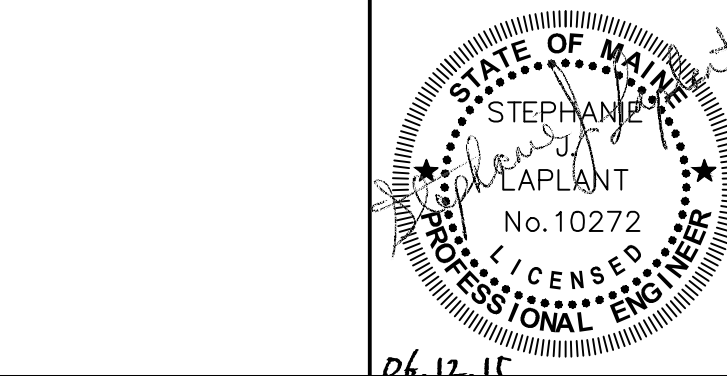


KEY PLAN
LEGEND:

- E EXISTING TO REMAIN
- ER EXISTING RELOCATED
- NR NEW TO REPLACE EXISTING IN EXISTING LOCATION
- R EXISTING TO BE REMOVED
- RR REMOVE & RELOCATE EXISTING
- ☐ FIRE ALARM HORN / LIGHT
- ▽ MULTI-CANDELA STROBE
- ☐ MULTI-CANDELA SPEAKER/STROBE
- ☐ CEILING MOUNTED MULTI-CANDELA SPEAKER/STROBE
- ⊙ FIRE ALARM SYSTEM CEILING MOUNTED HEAT DETECTOR - 'EL' FOR ELEVATOR SHUNT TRIP
- ⊙ FIRE ALARM SYSTEM CEILING MOUNTED SMOKE DETECTOR - 'EL' FOR ELEVATOR RECALL
- ☐ WALL MOUNTED FIRE ALARM SYSTEM MANUAL PULL STATION
- ☐ KNOX BOX
- ☐ JUNCTION BOX
- DOOR HOLD-OPEN DEVICE CONNECTION
- ⊙ FIRE ALARM SYSTEM/SPRINKLER SYSTEM PRESSURE SWITCH
- ⊙ FIRE ALARM SYSTEM/SPRINKLER SYSTEM FLOW SWITCH
- ⊙ FIRE ALARM SYSTEM/SPRINKLER SYSTEM TAMPER SWITCH
- ⊙ FIRE ALARM SYSTEM DUCT MOUNTED SMOKE DETECTOR
- ☐ FACP FIRE ALARM SYSTEM CONTROL PANEL
- ☐ FEA FIRE ALARM ANNUNCIATOR
- ⊙ GAS SHUT-OFF
- ☐ EX RADIO TRANSMITTER BOX
- ☐ MM MONITOR MODULE
- ☐ RT TEST STATION
- ☐ RM RELAY MODULE
- ⊙ ANSUL GAS TANK
- ☐ AMP FIRE ALARM AMPLIFIER

REV.	DESCRIPTION	DATE
0	ISSUED FOR BID	06.12.15

ISSUED FOR BID
06.12.15



WBRC
 ARCHITECTS • ENGINEERS
 WWW.WBRC.AE.COM
 BANGOR, MAINE 207-647-4511
 PORTLAND, MAINE 207-838-4511
 SUWANEE, FLORIDA 904-556-0075

**PORTLAND HIGH SCHOOL
 FIRE ALARM UPGRADES**

PROJECT: PORTLAND, ME
ATTIC - SEG. B FIRE ALARM PLAN

SHEET TITLE:	404100 - FD105B	
WBRC CAD FILE:	404100 GRAPHIC SCALE: 0"	
PROJECT No.:	404100	AS NOTED
SCALE:	AS NOTED	
PROJECT MANAGER:	SJL	SHEET No.
DRAWN BY:	KRM	FD105B
CHECKED BY:	SJL	

A1 **ATTIC - SEG. B FIRE ALARM PLAN**
 1/8" = 1'-0"