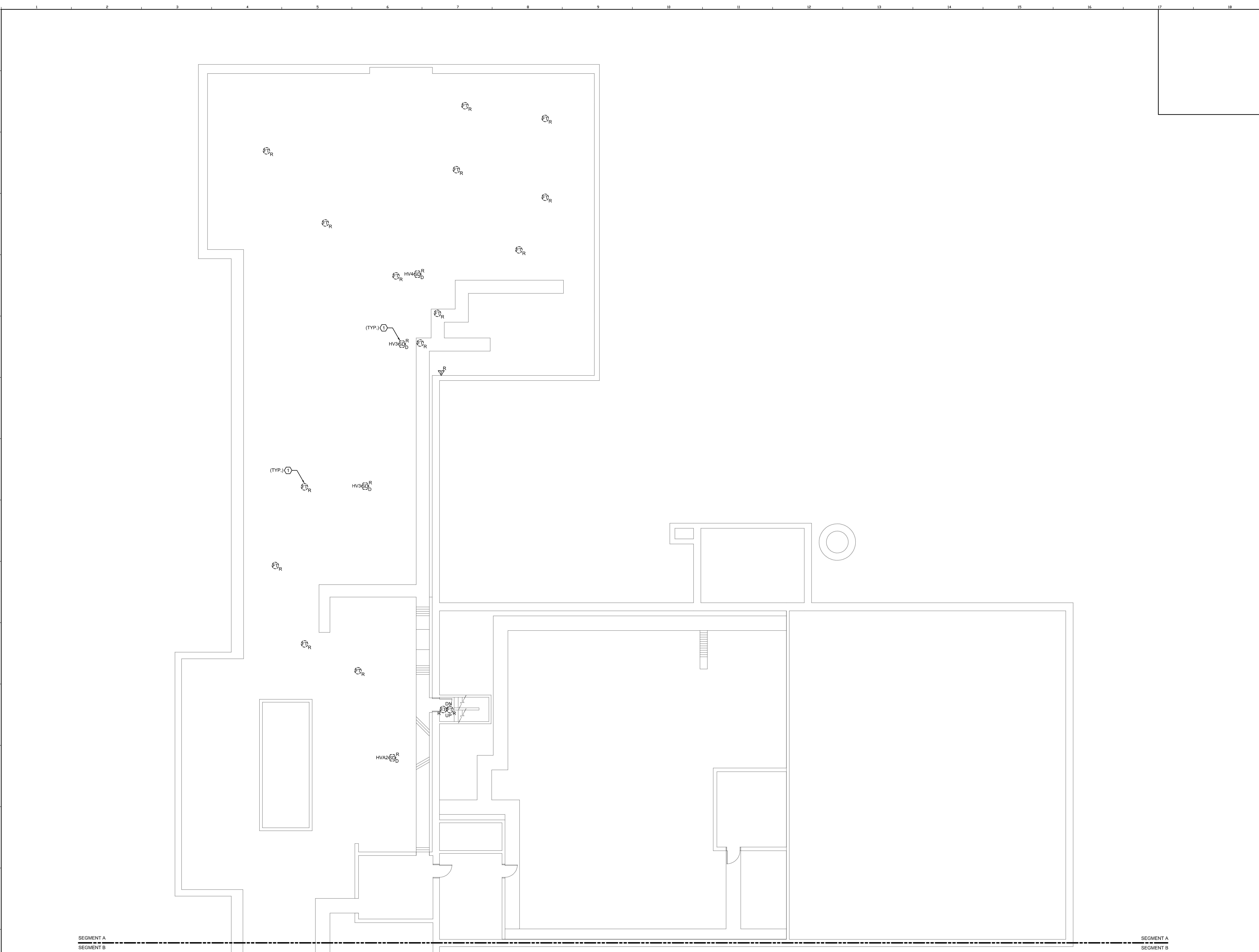
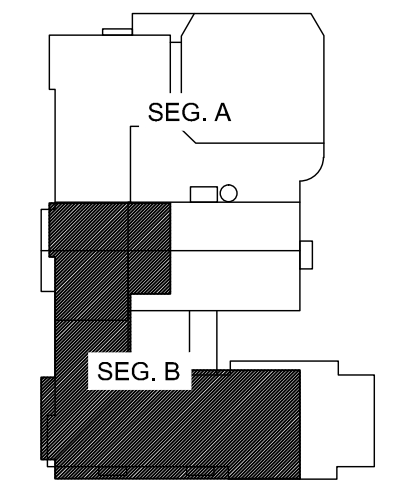


6/16/2015 2:44 PM I:\401-1100\401100-PORTLAND HIGH SCHOOL FIRE ALARM SYSTEM\2 DESIGN\DWG\PORTLAND SCHOOL EXISTING DRAWINGS\SHEETS\FD105A-ATTC - SEG. A FIRE ALARM PLAN.DWG



**TECHNICAL NOTES:**  
 ① HEAT AND DUCT SMOKE DETECTORS ARE SHOWN DIAGRAMMATICALLY WITHIN THIS ROOM. CONTRACTOR SHALL FIELD LOCATE EACH DETECTOR AND REMOVE AS REQUIRED.



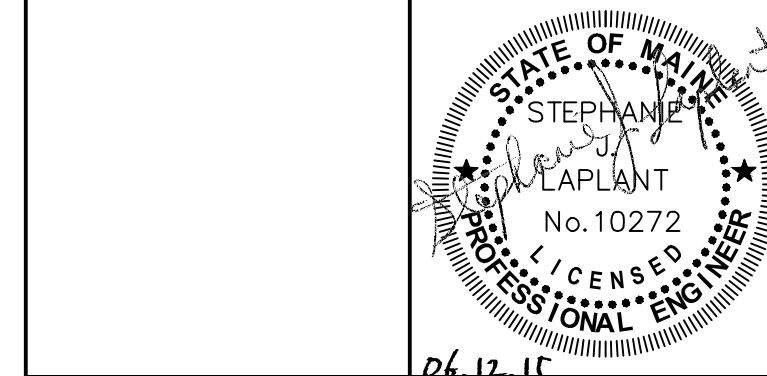
**KEY PLAN**

**LEGEND:**

- E EXISTING TO REMAIN
- ER EXISTING RELOCATED
- NR NEW TO REPLACE EXISTING IN EXISTING LOCATION
- R EXISTING TO BE REMOVED
- RR REMOVE & RELOCATE EXISTING
- ☐ FIRE ALARM HORN / LIGHT
- ▽ MULTI-CANDELA STROBE
- ☐ MULTI-CANDELA SPEAKER/STROBE
- ☐ CEILING MOUNTED MULTI-CANDELA SPEAKER/STROBE
- ⊙ FIRE ALARM SYSTEM CEILING MOUNTED HEAT DETECTOR - 'EL' FOR ELEVATOR SHUNT TRIP
- ⊙ FIRE ALARM SYSTEM CEILING MOUNTED SMOKE DETECTOR - 'EL' FOR ELEVATOR RECALL
- ☐ WALL MOUNTED FIRE ALARM SYSTEM MANUAL PULL STATION
- ☐ KNOX BOX
- ☐ JUNCTION BOX
- ☐ DOOR HOLD-OPEN DEVICE CONNECTION
- ⊙ FIRE ALARM SYSTEM/SPRINKLER SYSTEM PRESSURE SWITCH
- ⊙ FIRE ALARM SYSTEM/SPRINKLER SYSTEM FLOW SWITCH
- ⊙ FIRE ALARM SYSTEM/SPRINKLER SYSTEM TAMPER SWITCH
- ⊙ FIRE ALARM SYSTEM DUCT MOUNTED SMOKE DETECTOR
- ☐ FIRE ALARM SYSTEM CONTROL PANEL
- ☐ FIRE ALARM ANNUNCIATOR
- ☐ GAS SHUT-OFF
- ☐ RADIO TRANSMITTER BOX
- ☐ MONITOR MODULE
- ☐ TEST STATION
- ☐ RELAY MODULE
- ⊙ ANSUL GAS TANK
- ☐ FIRE ALARM AMPLIFIER

REV.	DESCRIPTION	DATE
0	ISSUED FOR BID	06.12.15

**ISSUED FOR BID**  
06.12.15



**WBRC**  
ARCHITECTS • ENGINEERS  
 WWW.WBRC-NE.COM  
 BANGOR, MAINE 207-647-4511  
 PORTLAND, MAINE 207-628-4511  
 SUWANEE, FLORIDA 941-556-0075

**PORTLAND HIGH SCHOOL  
FIRE ALARM UPGRADES**

PROJECT: PORTLAND, ME  
**ATTIC - SEG. A FIRE ALARM PLAN**

SHEET TITLE	ATTIC - SEG. A FIRE ALARM PLAN	
WBRC CAD FILE	404100	FD105A
PROJECT No.	404100	GRAPHIC SCALE: 0"
SCALE:	AS NOTED	
PROJECT MANAGER:	SJL	SHEET No.
DRAWN BY:	KRM	<b>FD105A</b>
CHECKED BY:	SJL	