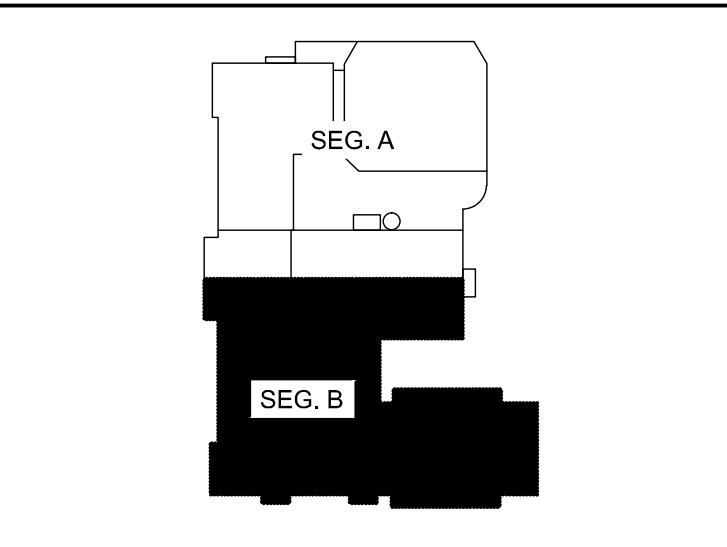
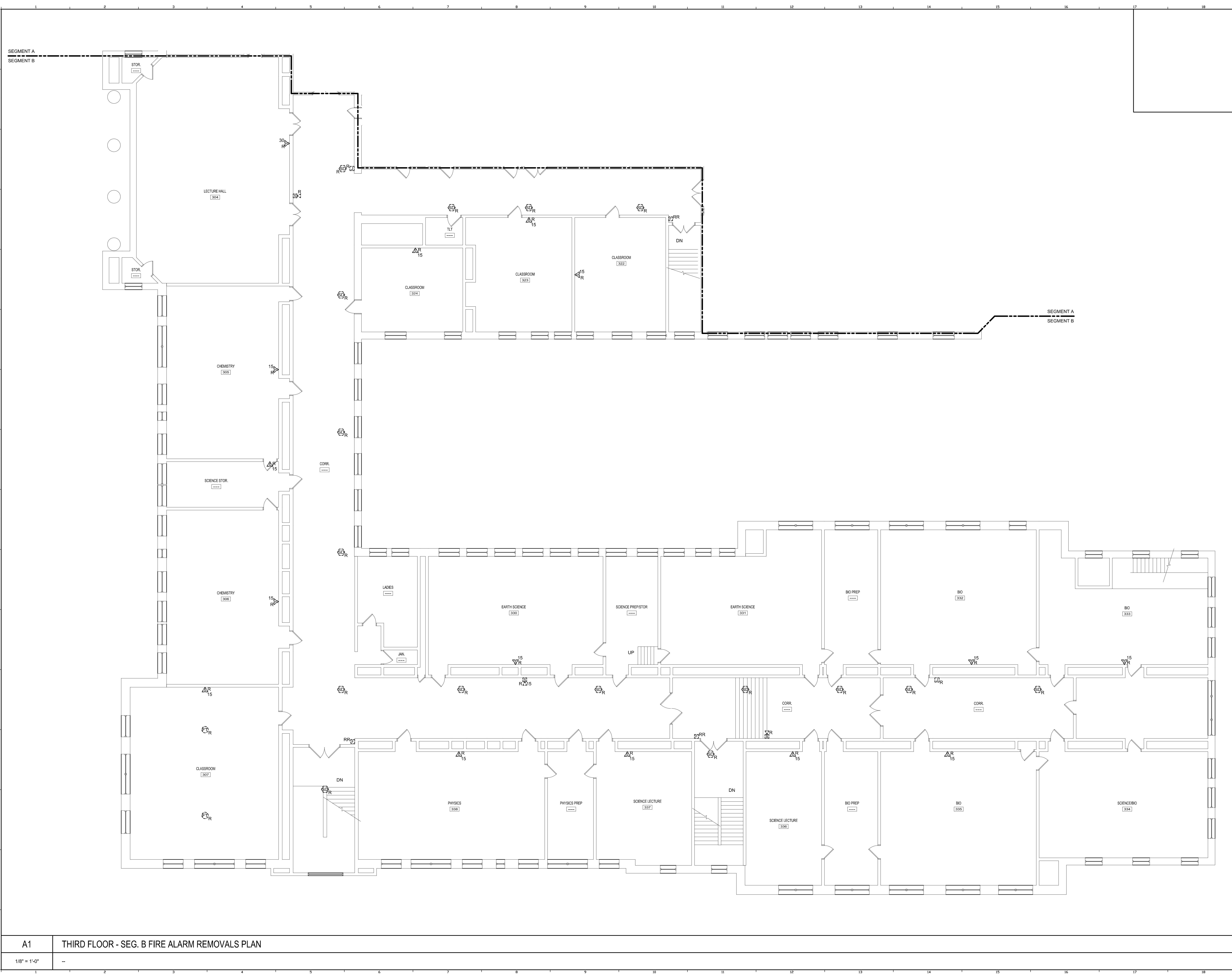


6/16/2015 2:44 PM I:\401-1100\401100-PORTLAND HIGH SCHOOL FIRE ALARM SYSTEM\2 DESIGN\WORKSHEETS\401100-FD104B-THIRD FLOOR - SEG. B FIRE ALARM REMOVALS PLAN.DWG KYLE MARR



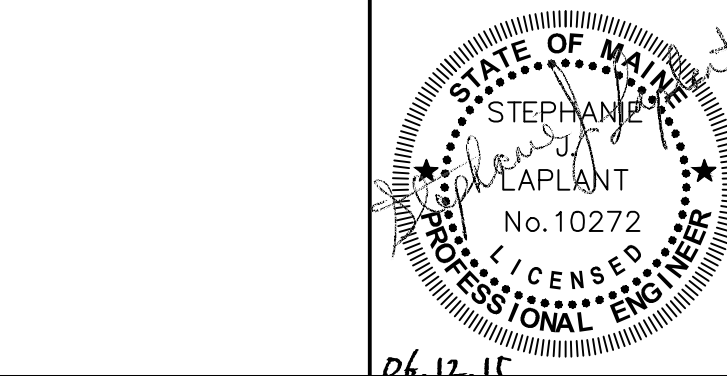
KEY PLAN

LEGEND:

- E EXISTING TO REMAIN
- FR EXISTING RELOCATED
- NR NEW TO REPLACE EXISTING IN EXISTING LOCATION
- R EXISTING TO BE REMOVED
- RR REMOVE & RELOCATE EXISTING
- △R FIRE ALARM HORN / LIGHT
- ▽R MULTI-CANDELA STROBE
- ⊠R MULTI-CANDELA SPEAKER/STROBE
- ⊙R CEILING MOUNTED MULTI-CANDELA SPEAKER/STROBE
- ⊙R FIRE ALARM SYSTEM CEILING MOUNTED HEAT DETECTOR - 'EL' FOR ELEVATOR SHUNT TRIP
- ⊙R FIRE ALARM SYSTEM CEILING MOUNTED SMOKE DETECTOR - 'EL' FOR ELEVATOR RECALL
- ⊠R WALL MOUNTED FIRE ALARM SYSTEM MANUAL PULL STATION
- ⊠R KNOX BOX
- ⊠R JUNCTION BOX
- R DOOR HOLD-OPEN DEVICE CONNECTION
- ⊙R FIRE ALARM SYSTEM/SPRINKLER SYSTEM PRESSURE SWITCH
- ⊙R FIRE ALARM SYSTEM/SPRINKLER SYSTEM FLOW SWITCH
- ⊙R FIRE ALARM SYSTEM/SPRINKLER SYSTEM TAMPER SWITCH
- ⊙R FIRE ALARM SYSTEM DUCT MOUNTED SMOKE DETECTOR
- ⊠R/FAC/FIRE ALARM SYSTEM CONTROL PANEL
- ⊠R/FEA/FIRE ALARM ANNUNCIATOR
- ⊠R/GAS SHUT-OFF
- ⊠R/RADIO TRANSMITTER BOX
- ⊠R/MONITOR MODULE
- ⊠R/TEST STATION
- ⊠R/RELAY MODULE
- ⊠R/ANSUL GAS TANK
- ⊠R/AMP/FIRE ALARM AMPLIFIER

0	ISSUED FOR BID	06.12.15
REV.	DESCRIPTION	DATE

ISSUED FOR BID
06.12.15



WBRC
ARCHITECTS • ENGINEERS
WWW.WBRCAE.COM
BANGOR, MAINE 207-647-4511
PORTLAND, MAINE 207-838-4511
SARASOTA, FLORIDA 941-556-0075

**PORTLAND HIGH SCHOOL
FIRE ALARM UPGRADES**

PROJECT: PORTLAND, ME
**THIRD FLOOR - SEG. B FIRE ALARM
REMOVALS PLAN**

SHEET TITLE:	404100 - FD104B
WBRC CAD FILE:	404100 GRAPHIC SCALE: 0"
PROJECT No.:	AS NOTED
SCALE:	AS NOTED
PROJECT MANAGER:	S/JL
DRAWN BY:	KRM
CHECKED BY:	S/JL

A1	THIRD FLOOR - SEG. B FIRE ALARM REMOVALS PLAN
1/8" = 1'-0"	--

FD104B