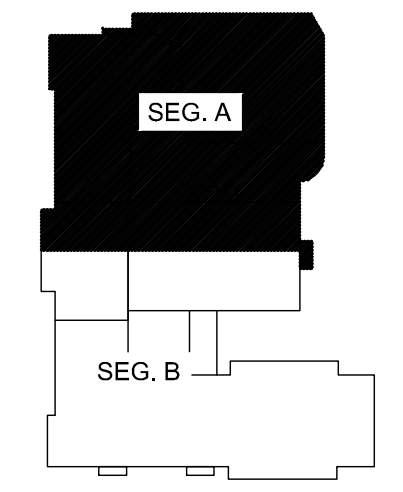


6/16/2015 2:44 PM I:\401-1100\44100 PORTLAND HIGH SCHOOL EXISTING DRAWINGS SHEETS\FD104A THIRD FLOOR - SEG. A FIRE ALARM REMOVALS PLAN.DWG KYLE MAHRE



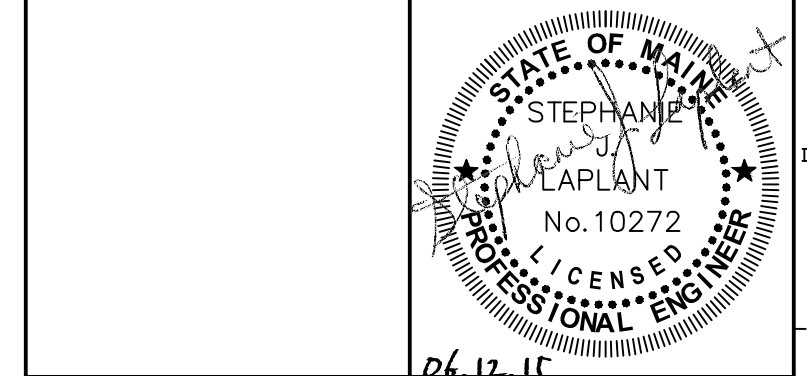
KEY PLAN

LEGEND:

- E EXISTING TO REMAIN
- ER EXISTING RELOCATED
- NR NEW TO REPLACE EXISTING IN EXISTING LOCATION
- R EXISTING TO BE REMOVED
- RR REMOVE & RELOCATE EXISTING
- ☐ FIRE ALARM HORN / LIGHT
- ▽ MULTI-CANDELA STROBE
- ☐ MULTI-CANDELA SPEAKER/STROBE
- ☉ CEILING MOUNTED MULTI-CANDELA SPEAKER/STROBE
- ⊙ FIRE ALARM SYSTEM CEILING MOUNTED HEAT DETECTOR - 'EL' FOR ELEVATOR SHUNT TRIP
- ⊙ FIRE ALARM SYSTEM CEILING MOUNTED SMOKE DETECTOR - 'EL' FOR ELEVATOR RECALL
- ☐ WALL MOUNTED FIRE ALARM SYSTEM MANUAL PULL STATION
- ☐ KNOX BOX
- ☐ JUNCTION BOX
- ☐ DOOR HOLD-OPEN DEVICE CONNECTION
- ⊙ FIRE ALARM SYSTEM/SPRINKLER SYSTEM PRESSURE SWITCH
- ⊙ FIRE ALARM SYSTEM/SPRINKLER SYSTEM FLOW SWITCH
- ⊙ FIRE ALARM SYSTEM/SPRINKLER SYSTEM TAMPER SWITCH
- ⊙ FIRE ALARM SYSTEM DUCT MOUNTED SMOKE DETECTOR
- ⊙ FIRE ALARM SYSTEM CONTROL PANEL
- ⊙ FIRE ALARM ANNUNCIATOR
- ⊙ GAS SHUT-OFF
- ⊙ RADIO TRANSMITTER BOX
- ⊙ MONITOR MODULE
- ⊙ TEST STATION
- ⊙ RELAY MODULE
- ⊙ ANSUL GAS TANK
- ⊙ FIRE ALARM AMPLIFIER

0	ISSUED FOR BID	06.12.15
REV.	DESCRIPTION	DATE

ISSUED FOR BID
06.12.15



WBRC
ARCHITECTS • ENGINEERS
WWW.WBRC.AE.COM
BANGOR, MAINE 207-647-4511
PORTLAND, MAINE 207-639-4511
SUWANEE, FLORIDA 904-556-0075

**PORTLAND HIGH SCHOOL
FIRE ALARM UPGRADES**

PROJECT: PORTLAND, ME
**THIRD FLOOR - SEG. A FIRE ALARM
REMOVALS PLAN**

SHEET TITLE:	404100 - FD104A
WBRC CAD FILE:	404100 GRAPHIC SCALE: 0"
PROJECT No.:	AS NOTED
SCALE:	S/JL SHEET No. FD104A
PROJECT MANAGER:	KRM
DRAWN BY:	S/JL
CHECKED BY:	

A1 THIRD FLOOR - SEG. A FIRE ALARM REMOVALS PLAN
1/8" = 1'-0"