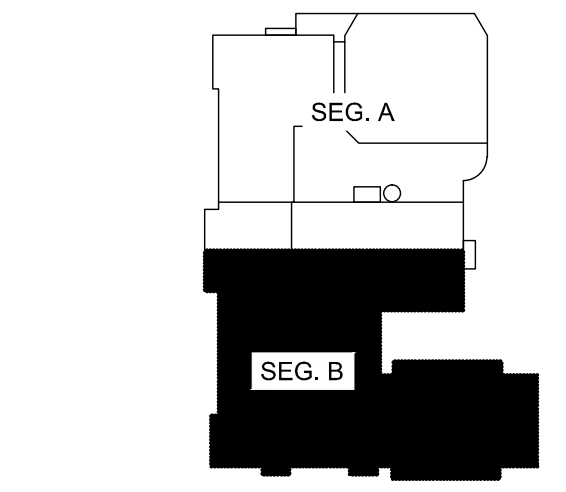


6/16/2015 9:43 PM I:\401-1100\401100-PORTLAND HIGH SCHOOL EXISTING DRAWINGS\SHEETS\401100-FD102B FIRST FLOOR - SEG. B FIRE ALARM REMOVALS PLANNING KOLEBAHR



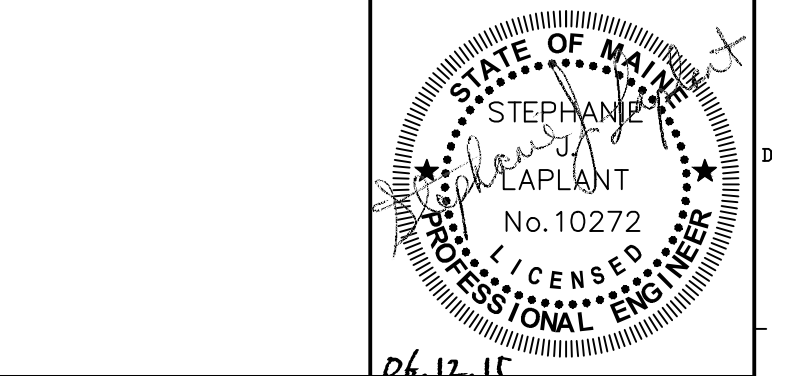
KEY PLAN

LEGEND:

- E EXISTING TO REMAIN
- FR EXISTING RELOCATED
- NR NEW TO REPLACE EXISTING IN EXISTING LOCATION
- RE EXISTING TO BE REMOVED
- RR REMOVE & RELOCATE EXISTING
- ☐ FIRE ALARM HORN / LIGHT
- ▽ MULTI-CANDELA STROBE
- ☐ MULTI-CANDELA SPEAKER/STROBE
- ☉ CEILING MOUNTED MULTI-CANDELA SPEAKER/STROBE
- ⊙ FIRE ALARM SYSTEM CEILING MOUNTED HEAT DETECTOR - "EL" FOR ELEVATOR SHUNT TRIP
- ⊙ FIRE ALARM SYSTEM CEILING MOUNTED SMOKE DETECTOR - "EL" FOR ELEVATOR RECALL
- ☐ WALL MOUNTED FIRE ALARM SYSTEM MANUAL PULL STATION
- ☐ KNOX BOX
- ☐ JUNCTION BOX
- ☐ DOOR HOLD-OPEN DEVICE CONNECTION
- ⊙ FIRE ALARM SYSTEM/SPRINKLER SYSTEM PRESSURE SWITCH
- ⊙ FIRE ALARM SYSTEM/SPRINKLER SYSTEM FLOW SWITCH
- ⊙ FIRE ALARM SYSTEM/SPRINKLER SYSTEM TAMPER SWITCH
- ⊙ FIRE ALARM SYSTEM DUCT MOUNTED SMOKE DETECTOR
- ☐ FACP FIRE ALARM SYSTEM CONTROL PANEL
- ☐ FEA FIRE ALARM ANNUNCIATOR
- ☐ GAS SHUT-OFF
- ☐ RT RADIO TRANSMITTER BOX
- ☐ MM MONITOR MODULE
- ☐ TS TEST STATION
- ☐ RM RELAY MODULE
- ⊙ ANSUL GAS TANK
- ☐ AMP FIRE ALARM AMPLIFIER

REV.	DESCRIPTION	DATE
0	ISSUED FOR BID	06.12.15

ISSUED FOR BID
06.12.15



WBRC
ARCHITECTS • ENGINEERS
WWW.WBRC.COM
BANGOR, MAINE 207-647-4511
PORTLAND, MAINE 207-838-6511
SUWANEEVILLE, FLORIDA 904-556-0075

**PORTLAND HIGH SCHOOL
FIRE ALARM UPGRADES**

PROJECT: PORTLAND, ME

**FIRST FLOOR - SEG. B FIRE ALARM
REMOVALS PLAN**

SHEET TITLE:	404100 - FD102B
WBRC CAD FILE:	404100 GRAPHIC SCALE: 0"
PROJECT No.:	AS NOTED
SCALE:	
PROJECT MANAGER:	S/JL
DRAWN BY:	KRM
CHECKED BY:	S/JL

A1 **FIRST FLOOR - SEG. B FIRE ALARM REMOVALS PLAN**

1/8" = 1'-0"

FD102B