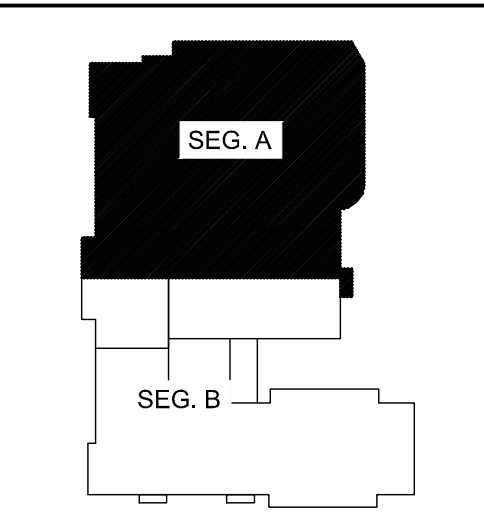
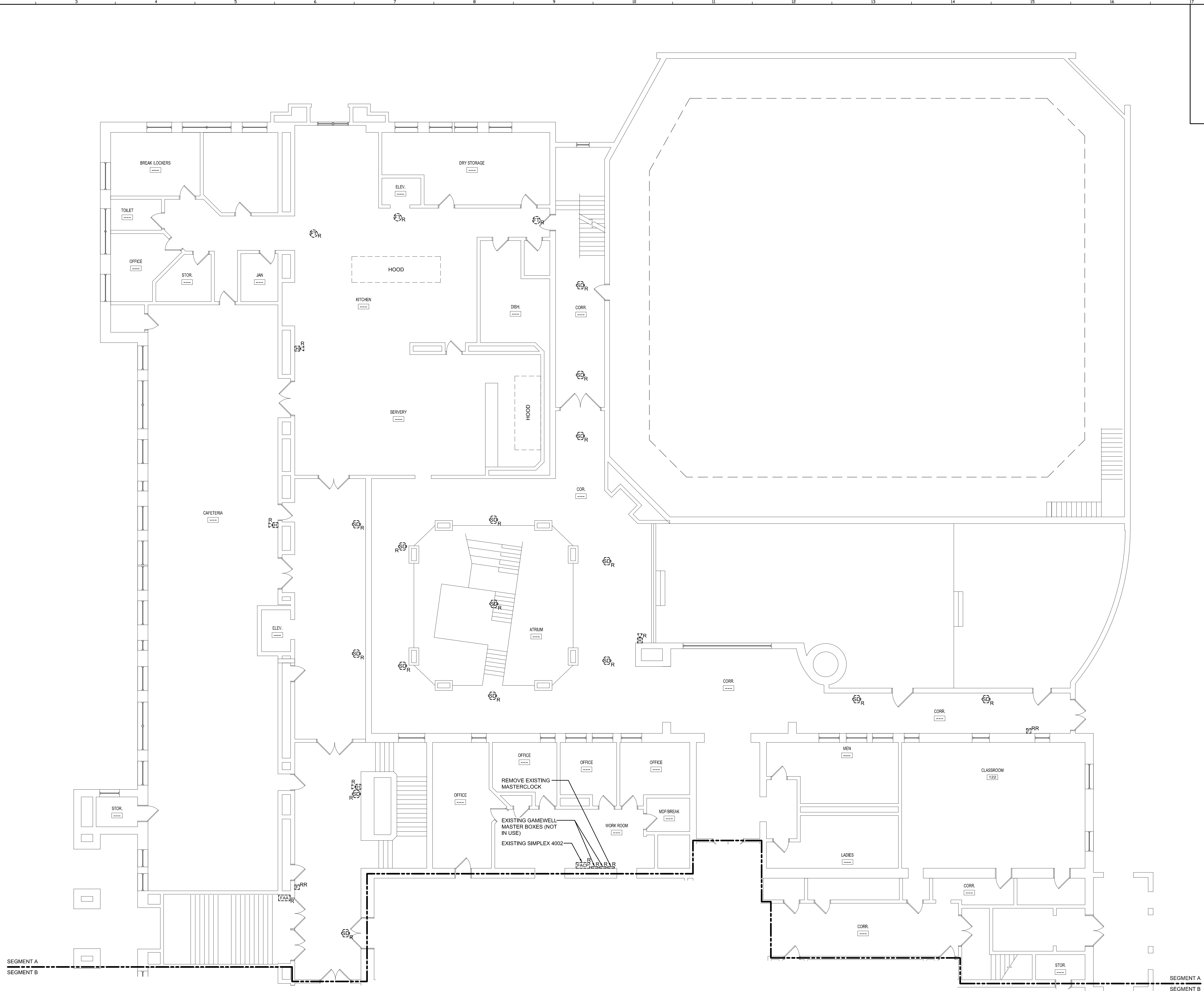


6/16/2015 9:43 PM I:\401-1102A\1102A\PORTLAND HIGH SCHOOL EXISTING DRAWINGS\SHEETS\404100-FD102A-FD102A-FIRE ALARM REMOVALS PLANNING KYLE MAHAR



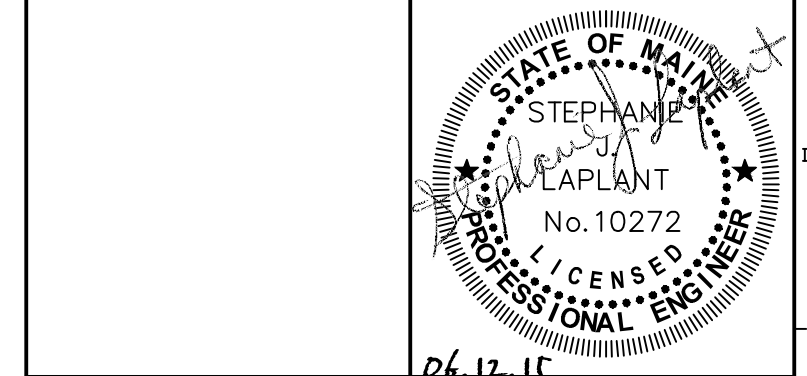
KEY PLAN

LEGEND:

- E EXISTING TO REMAIN
- ER EXISTING RELOCATED
- NR NEW TO REPLACE EXISTING IN EXISTING LOCATION
- R EXISTING TO BE REMOVED
- RR REMOVE & RELOCATE EXISTING
- FA FIRE ALARM HORN / LIGHT
- MS MULTI-CANDELA STROBE
- MSR MULTI-CANDELA SPEAKER/STROBE
- CSR CEILING MOUNTED MULTI-CANDELA SPEAKER/STROBE
- CE FIRE ALARM SYSTEM CEILING MOUNTED HEAT DETECTOR - 'EL' FOR ELEVATOR SHUNT TRIP
- CER FIRE ALARM SYSTEM CEILING MOUNTED SMOKE DETECTOR - 'EL' FOR ELEVATOR RECALL
- MF WALL MOUNTED FIRE ALARM SYSTEM MANUAL PULL STATION
- KB KNOX BOX
- JB JUNCTION BOX
- DOOR DOOR HOLD-OPEN DEVICE CONNECTION
- PS FIRE ALARM SYSTEM/SPRINKLER SYSTEM PRESSURE SWITCH
- FS FIRE ALARM SYSTEM/SPRINKLER SYSTEM FLOW SWITCH
- TS FIRE ALARM SYSTEM/SPRINKLER SYSTEM TAMPER SWITCH
- DSM FIRE ALARM SYSTEM DUCT MOUNTED SMOKE DETECTOR
- FCAP FIRE ALARM SYSTEM CONTROL PANEL
- FAA FIRE ALARM ANNUNCIATOR
- GS GAS SHUT-OFF
- RTB RADIO TRANSMITTER BOX
- MM MONITOR MODULE
- TS TEST STATION
- RM RELAY MODULE
- AG ANSUL GAS TANK
- AMP FIRE ALARM AMPLIFIER

0	ISSUED FOR BID	06.12.15
REV.	DESCRIPTION	DATE

ISSUED FOR BID
06.12.15



WBRC
ARCHITECTS • ENGINEERS
WWW.WBRC.COM
BANGOR, MAINE 207-647-4511
PORTLAND, MAINE 207-838-6511
SARASOTA, FLORIDA 941-556-0075

**PORTLAND HIGH SCHOOL
FIRE ALARM UPGRADES**

PROJECT: PORTLAND, ME

**FIRST FLOOR - SEG. A FIRE ALARM
REMOVALS PLAN**

SHEET TITLE:	404100 - FD102A
WBRC CAD FILE:	404100 - FD102A
PROJECT No.:	404100 GRAPHIC SCALE: 0"
SCALE:	AS NOTED
PROJECT MANAGER:	S/JL
DRAWN BY:	KRM
CHECKED BY:	S/JL
FD102A	

A1 FIRST FLOOR - SEG. A FIRE ALARM REMOVALS PLAN

1/8" = 1'-0"