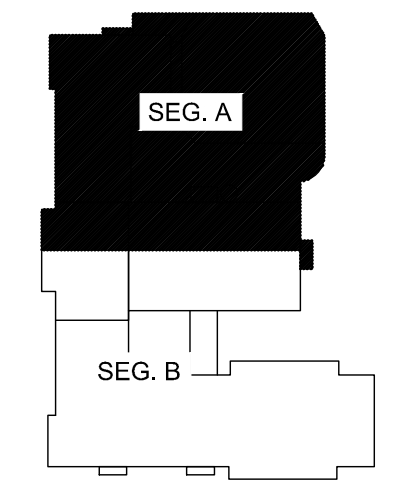
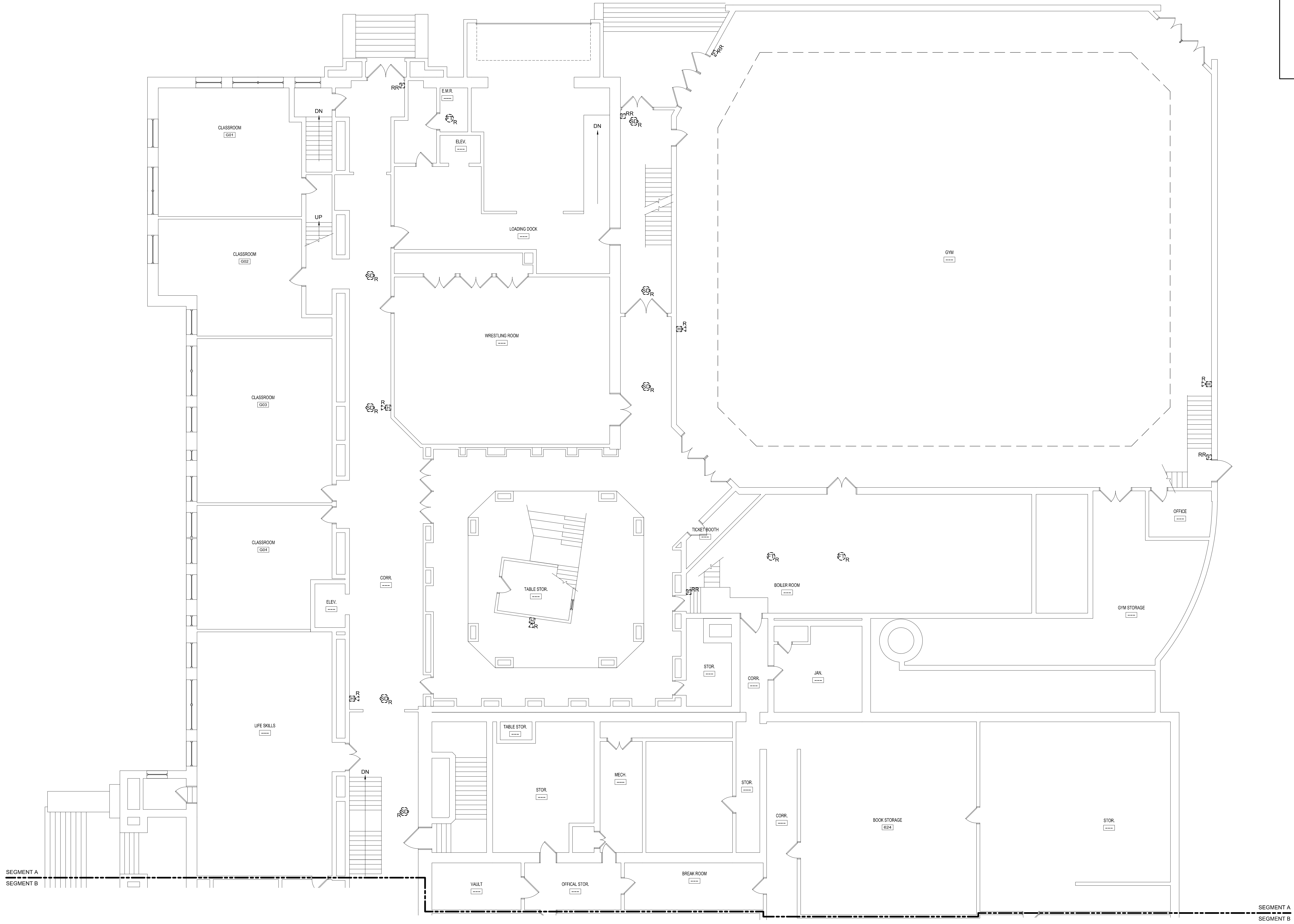


6/16/2015 9:43 PM I:\401-1100\401100-PORTLAND HIGH SCHOOL EXISTING DRAWINGS\SHEETS\401100-FD101A GROUND FLOOR - SEG. A FIRE ALARM REMOVALS PLAN.DWG KYLE MAHAR

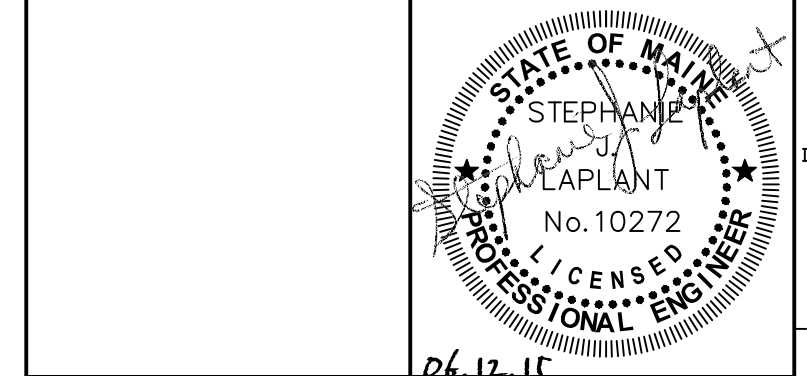


KEY PLAN

- LEGEND:**
- E EXISTING TO REMAIN
 - ER EXISTING RELOCATED
 - NR NEW TO REPLACE EXISTING IN EXISTING LOCATION
 - R EXISTING TO BE REMOVED
 - RR REMOVE & RELOCATE EXISTING
 - ☐ FIRE ALARM HORN / LIGHT
 - ☒ MULTI-CANDELA STROBE
 - ☒ MULTI-CANDELA SPEAKER/STROBE
 - ☒ CEILING MOUNTED MULTI-CANDELA SPEAKER/STROBE
 - ⊙ FIRE ALARM SYSTEM CEILING MOUNTED HEAT DETECTOR - 'EL' FOR ELEVATOR SHUNT TRIP
 - ⊙ FIRE ALARM SYSTEM CEILING MOUNTED SMOKE DETECTOR - 'EL' FOR ELEVATOR RECALL
 - ☐ WALL MOUNTED FIRE ALARM SYSTEM MANUAL PULL STATION
 - ☐ KNOX BOX
 - ☐ JUNCTION BOX
 - ☐ DOOR HOLD-OPEN DEVICE CONNECTION
 - ⊙ FIRE ALARM SYSTEM/SPRINKLER SYSTEM PRESSURE SWITCH
 - ⊙ FIRE ALARM SYSTEM/SPRINKLER SYSTEM FLOW SWITCH
 - ⊙ FIRE ALARM SYSTEM/SPRINKLER SYSTEM TAMPER SWITCH
 - ⊙ FIRE ALARM SYSTEM DUCT MOUNTED SMOKE DETECTOR
 - ☐ FACP FIRE ALARM SYSTEM CONTROL PANEL
 - ☐ FEA FIRE ALARM ANNUNCIATOR
 - ☐ GAS SHUT-OFF
 - ☐ RT RADIO TRANSMITTER BOX
 - ☐ MM MONITOR MODULE
 - ☐ TS TEST STATION
 - ☐ RM RELAY MODULE
 - ⊙ ANSUL GAS TANK
 - ☐ AMP FIRE ALARM AMPLIFIER

---	---	---
0	ISSUED FOR BID	06.12.15
REV.	DESCRIPTION	DATE

ISSUED FOR BID
06.12.15



WBRC
ARCHITECTS • ENGINEERS
WWW.WBRC.AE.COM
BANGOR, MAINE 207-647-4511
PORTLAND, MAINE 207-838-6511
SARASOTA, FLORIDA 941-556-0075

**PORTLAND HIGH SCHOOL
FIRE ALARM UPGRADES**

PROJECT: PORTLAND, ME

**GROUND FLOOR - SEG. A FIRE
ALARM REMOVALS PLAN**

SHEET TITLE:	404100 - FD101A
WBRC CAD FILE:	404100
PROJECT No.:	404100 GRAPHIC SCALE: 0"
SCALE:	AS NOTED
PROJECT MANAGER:	S/JL
DRAWN BY:	KRM
CHECKED BY:	S/JL

A1 **GROUND FLOOR - SEG. A FIRE ALARM REMOVALS PLAN**

1/8" = 1'-0" --

FD101A