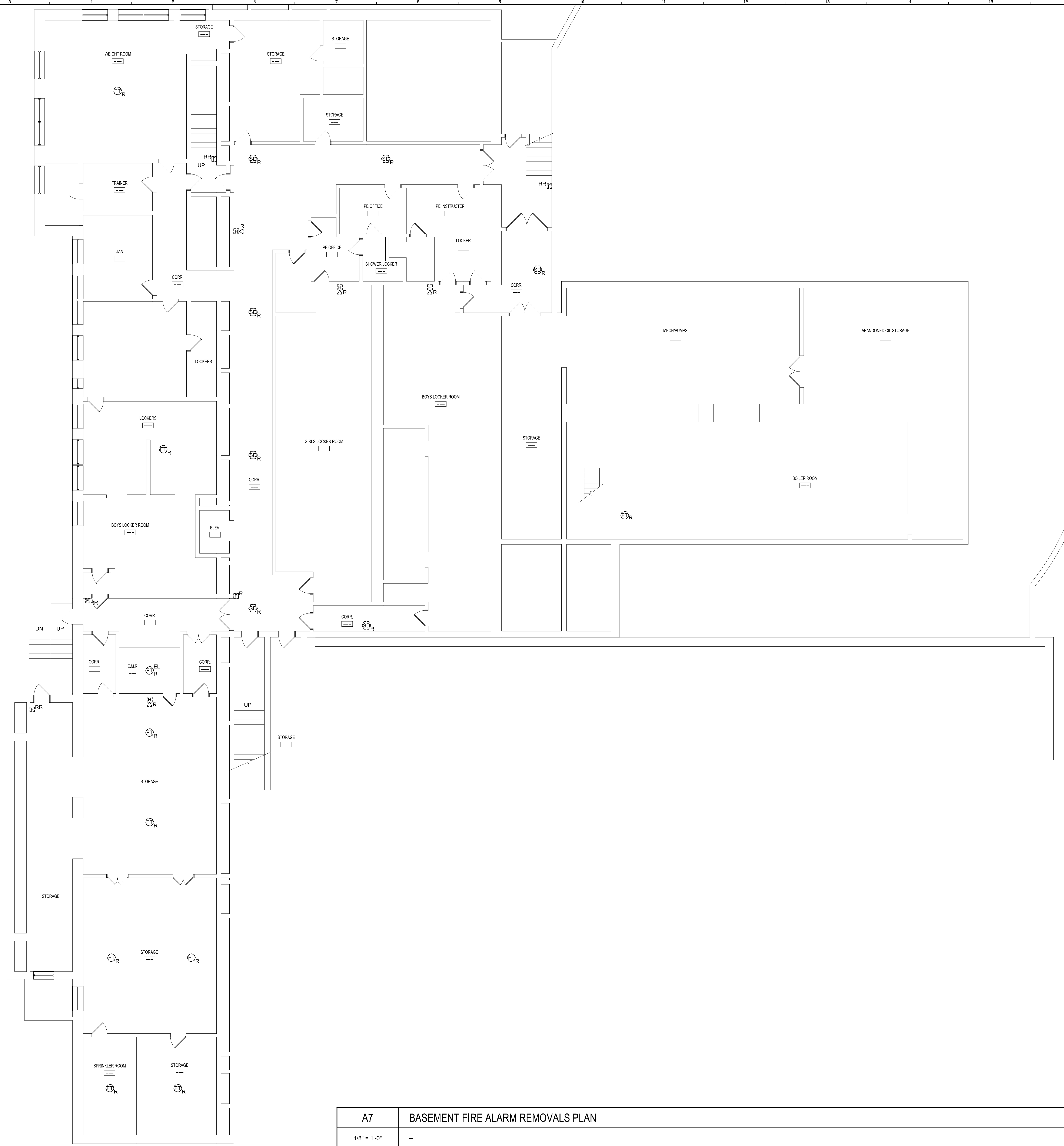


6/16/2015 2:43 PM I:\4041-1100\404100\PORTLAND HIGH SCHOOL FIRE ALARM SYSTEM\2 DESIGN\DWGS\BID\PORTLAND SCHOOL EXISTING DEMOLITION FIRE ALARM REMOVALS PLANNING KYLE MAHR



**GENERAL DEMOLITION NOTES:**

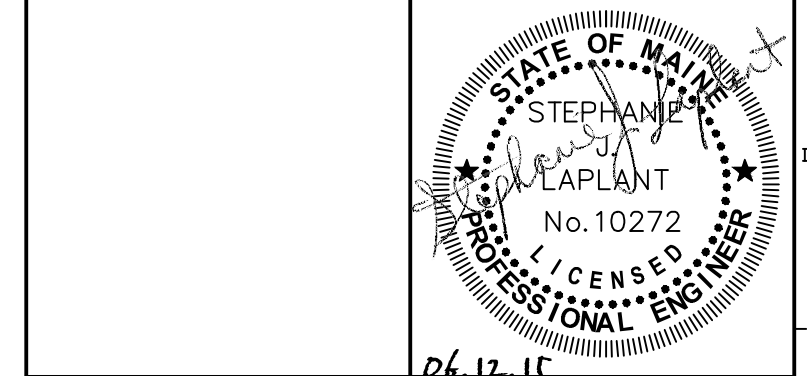
- THESE NOTES SHALL APPLY TO ALL DEMO PLANS FOR THIS BUILDING.
1. WIRING FOR EXISTING FIRE ALARM DEVICES TO BE REMOVED & NOT INTENDED TO BE REUSED SHALL BE REMOVED ENTIRELY. DO NOT ABANDON FIRE ALARM WIRING ABOVE CEILING OR IN WIREWAYS.
  2. MAINTAIN, OR RESTORE IF INTERRUPTED BY REMOVALS OR IN PATH OF NEW CONSTRUCTION, ALL CONDUITS AND CONDUCTORS PASSING THROUGH AND SERVING UNDISTURBED AREAS (SHOWN OR NOT SHOWN).
  3. ALL EXISTING CONDUITS STUBBED THROUGH FLOOR SERVING ITEMS TO BE REMOVED (SHOWN OR NOT SHOWN) AND NOT REQUIRED TO BE REUSED SHALL BE CUT OFF FLUSH WITH THE SLAB LEVEL AND SEALED.
  4. IN ANY AREA REQUIRING THE PERFORMANCE OF ANY TRADES WORK, THIS CONTRACTOR SHALL CAREFULLY REMOVE AND STORE ANY ELECTRICAL ITEMS IN THE PATH OF WORK, REINSTALLING AND RECONNECTING SAME AS REQUIRED IN ACCORDANCE WITH THE PLANS AND/OR AS DIRECTED AFTER COMPLETION OF OTHER TRADES WORK IN THAT AREA.
  5. INVENTORY ITEMS WITH SALVAGE VALUE THAT ARE REMOVED, AND PROVIDE A LIST TO THE OWNER FOR THEIR SELECTION OF ITEMS TO BE RETAINED. ALL ITEMS REJECTED BY THE OWNER SHALL BECOME THE PROPERTY OF THE CONTRACTOR AND SHALL BE REMOVED FROM THE SITE.
  6. WHERE EXISTING DEVICE IS NOTED TO BE REMOVED, RECESSED JUNCTION BOX MAY BE ABANDONED IN PLACE. PROVIDE BLANK PLATE AT BOX AND PAINT TO MATCH ADJACENT SURFACES.

**KEY PLAN**  
**LEGEND:**

- E EXISTING TO REMAIN
- ER EXISTING RELOCATED
- NR NEW TO REPLACE EXISTING IN EXISTING LOCATION
- R EXISTING TO BE REMOVED
- RR REMOVE & RELOCATE EXISTING
- 🔊 FIRE ALARM HORN / LIGHT
- 🔦 MULTI-CANDELA STROBE
- 🔦 MULTI-CANDELA SPEAKER/STROBE
- 🔊 CEILING MOUNTED MULTI-CANDELA SPEAKER/STROBE
- 🔦 FIRE ALARM SYSTEM CEILING MOUNTED HEAT DETECTOR - 'EL' FOR ELEVATOR SHUNT TRIP
- 🔦 FIRE ALARM SYSTEM CEILING MOUNTED SMOKE DETECTOR - 'EL' FOR ELEVATOR RECALL
- 🔦 WALL MOUNTED FIRE ALARM SYSTEM MANUAL PULL STATION
- 🔦 KNOX BOX
- 🔦 JUNCTION BOX
- 🔦 DOOR HOLD-OPEN DEVICE CONNECTION
- 🔦 FIRE ALARM SYSTEM/SPRINKLER SYSTEM PRESSURE SWITCH
- 🔦 FIRE ALARM SYSTEM/SPRINKLER SYSTEM FLOW SWITCH
- 🔦 FIRE ALARM SYSTEM/SPRINKLER SYSTEM TAMPER SWITCH
- 🔦 FIRE ALARM SYSTEM DUCT MOUNTED SMOKE DETECTOR
- 🔦 FIRE ALARM SYSTEM CONTROL PANEL
- 🔦 FIRE ALARM ANNUNCIATOR
- 🔦 GAS SHUT-OFF
- 🔦 RADIO TRANSMITTER BOX
- 🔦 MONITOR MODULE
- 🔦 TEST STATION
- 🔦 RELAY MODULE
- 🔦 ANSUL GAS TANK
- 🔦 FIRE ALARM AMPLIFIER

|      |                |          |
|------|----------------|----------|
| REV. | DESCRIPTION    | DATE     |
| 0    | ISSUED FOR BID | 06.12.15 |

**ISSUED FOR BID**  
**06.12.15**



**WBRC**  
ARCHITECTS • ENGINEERS  
WWW.WBRC-NE.COM  
BANGOR, MAINE 207-647-4511  
PORTLAND, MAINE 207-838-4511  
SARASOTA, FLORIDA 941-556-0075

**PORTLAND HIGH SCHOOL  
FIRE ALARM UPGRADES**

PROJECT: PORTLAND, ME  
**BASEMENT FIRE ALARM REMOVALS  
PLAN**

|                  |                          |
|------------------|--------------------------|
| SHEET TITLE:     | 404100 - FD100           |
| WBRC CAD FILE:   | 404100                   |
| PROJECT No.:     | 404100 GRAPHIC SCALE: 0" |
| SCALE:           | AS NOTED                 |
| PROJECT MANAGER: | S/JL                     |
| DRAWN BY:        | KRM                      |
| CHECKED BY:      | S/JL                     |
| SHEET No.:       | <b>FD100</b>             |

|              |  |
|--------------|--|
| <b>A7</b>    | <b>BASEMENT FIRE ALARM REMOVALS PLAN</b> |
| 1/8" = 1'-0" | --                                       |