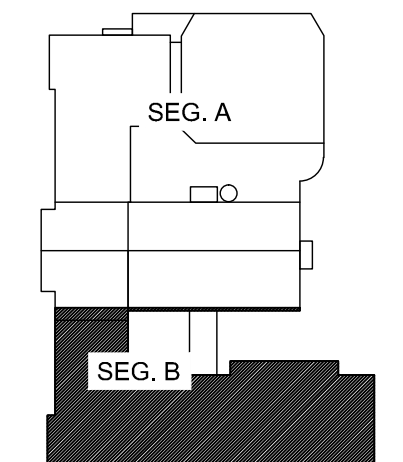


**GENERAL NOTES:**

1. MAJORITY OF ATTIC IS NOT SPRINKLED. FIRE ALARM ACTIVATION BY AUTOMATIC INITIATION DEVICES (HEAT DETECTORS) IS REQUIRED WHERE SPRINKLERS DO NOT EXIST.

**TECHNICAL NOTES:**

① DUCT SMOKE DETECTORS ARE NOTED DIAGRAMMATICALLY IN THIS SPACE. REPLACE EXISTING DUCT SMOKE DETECTOR WITH A NEW DEVICE. CONTRACTOR SHALL FIELD VERIFY THE EXACT LOCATION OF EACH EXISTING DETECTOR. IF 120V POWER IS REQUIRED, CONNECT TO NEARBY RECEPTACLE CIRCUIT.



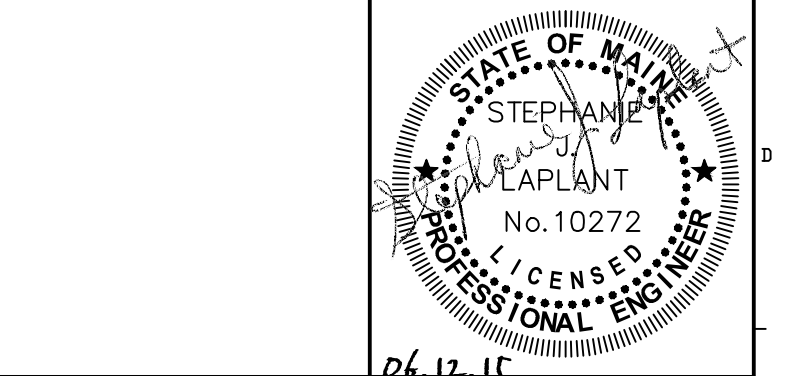
**KEY PLAN**

**LEGEND:**

- E EXISTING TO REMAIN
- ER EXISTING RELOCATED
- NR NEW TO REPLACE EXISTING IN EXISTING LOCATION
- R EXISTING TO BE REMOVED
- RR REMOVE & RELOCATE EXISTING
- ☐ FIRE ALARM HORN / LIGHT
- ▽ MULTI-CANDELA STROBE
- ☐ MULTI-CANDELA SPEAKER/STROBE
- ☐ CEILING MOUNTED MULTI-CANDELA SPEAKER/STROBE
- ⊙ FIRE ALARM SYSTEM CEILING MOUNTED HEAT DETECTOR - 'EL' FOR ELEVATOR SHUNT TRIP
- ⊙ FIRE ALARM SYSTEM CEILING MOUNTED SMOKE DETECTOR - 'EL' FOR ELEVATOR RECALL
- ☐ WALL MOUNTED FIRE ALARM SYSTEM MANUAL PULL STATION
- ☐ KNOX BOX
- ☐ JUNCTION BOX
- ☐ DOOR HOLD-OPEN DEVICE CONNECTION
- ⊙ FIRE ALARM SYSTEM/SPRINKLER SYSTEM PRESSURE SWITCH
- ⊙ FIRE ALARM SYSTEM/SPRINKLER SYSTEM FLOW SWITCH
- ⊙ FIRE ALARM SYSTEM/SPRINKLER SYSTEM TAMPER SWITCH
- ⊙ FIRE ALARM SYSTEM DUCT MOUNTED SMOKE DETECTOR
- ☐ FACP FIRE ALARM SYSTEM CONTROL PANEL
- ☐ FAM FIRE ALARM ANNUNCIATOR
- ☐ GAS SHUT-OFF
- ☐ EX RADIO TRANSMITTER BOX
- ☐ RT MONITOR MODULE
- ☐ M TEST STATION
- ☐ R RELAY MODULE
- ⊙ ANSUL GAS TANK
- ☐ AMP FIRE ALARM AMPLIFIER

REV.	DESCRIPTION	DATE
0	ISSUED FOR BID	06.12.15

**ISSUED FOR BID**  
06.12.15



**WBRC**  
ARCHITECTS • ENGINEERS  
WWW.WBRE.AE.COM  
BANGOR, MAINE 207-647-4511  
PORTLAND, MAINE 207-639-4511  
SUWANEE, FLORIDA 904-556-0075

**PORTLAND HIGH SCHOOL  
FIRE ALARM UPGRADES**

PROJECT: PORTLAND, ME  
**ATTIC - SEG. B FIRE ALARM PLAN**

SHEET TITLE:	404100 - FA105B
WBRC CAD FILE:	404100 - FA105B
PROJECT No.:	404100 GRAPHIC SCALE: 0"
SCALE:	AS NOTED
PROJECT MANAGER:	S/JL
DRAWN BY:	KRM
CHECKED BY:	S/JL
<b>FA105B</b>	

6/16/2015 2:43 PM (V:\4041-1100\404100 PORTLAND HIGH SCHOOL FIRE ALARM SYSTEM 2 DESIGN\WORKSHEETS\PORTLAND SCHOOL EXISTING DRAWINGS\SHEETS\FA105B ATTIC - SEG. B FIRE ALARM PLAN.DWG) KYLE MAHRE

A1 ATTIC - SEG. B FIRE ALARM PLAN

1/8" = 1'-0"