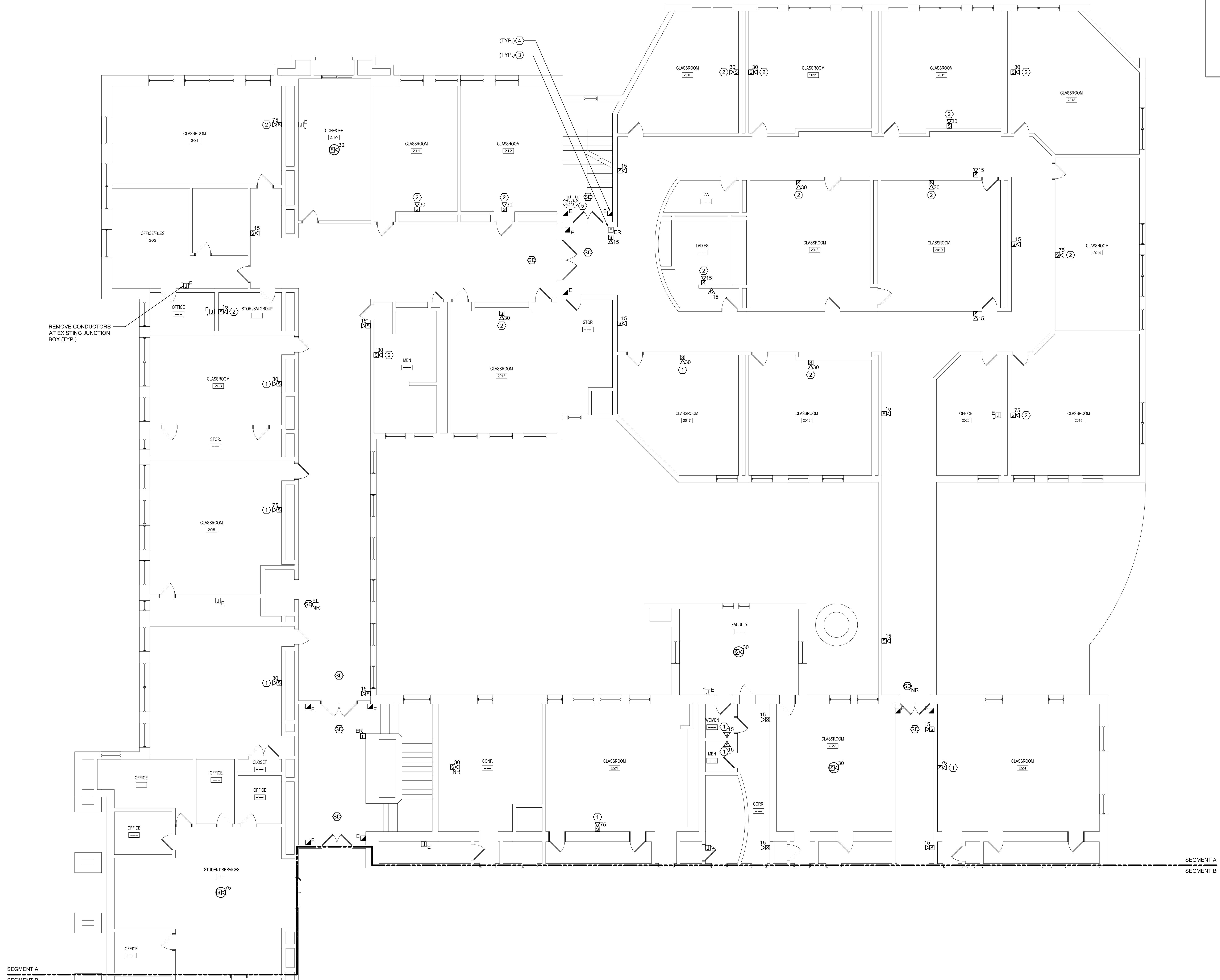
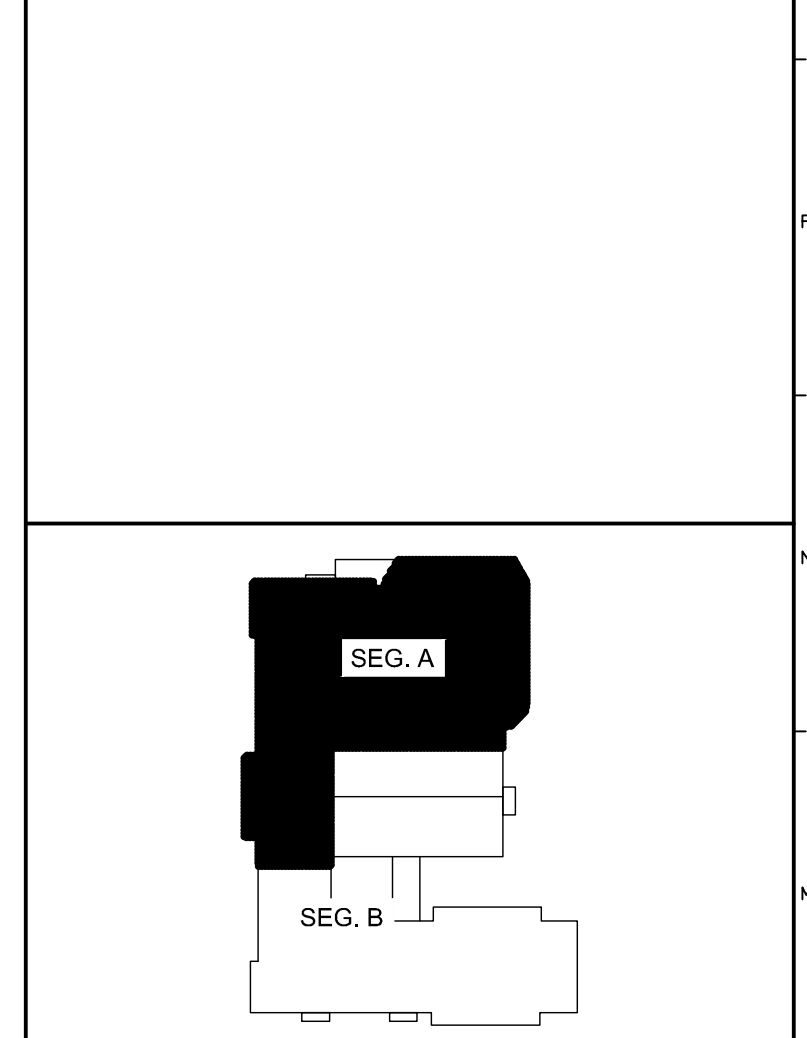


6/16/2015 2:42 PM (V401)-1100-44100 PORTLAND HIGH SCHOOL FIRE ALARM SYSTEM 2 DESIGN (WORKS) (BIDD) PORTLAND SCHOOL EXISTING DRAWINGS SHEETS (A1034 SECOND FLOOR - SEG. A FIRE ALARM PLAN) DWG. KYLE MAHAR



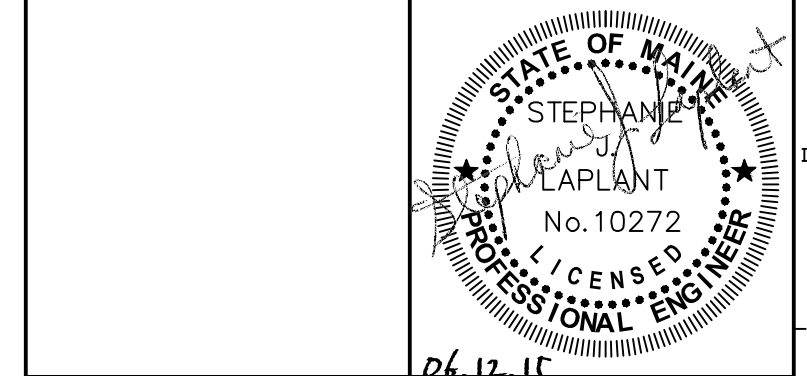
- TECHNICAL NOTES:**
- ① UTILIZE EXISTING JUNCTION BOX AT THIS LOCATION FOR NEW FIA DEVICE.
 - ② REMOVE EXISTING CONDUCTOR FROM EXISTING JUNCTION BOX. JUNCTION BOX AND PATHWAY SHALL BE REUSED FOR NEW DEVICE AND CONDUCTORS.
 - ③ LOWER EXISTING MANUAL PULL STATION TO 48" AFF.
 - ④ PROVIDE CONTROL MODULE FOR RELEASE OF MAGNETIC DOOR HOLDER.
 - ⑤ MAINTAIN EXISTING SPRINKLER FLOW, TAMPER AND/OR PRESSURE SWITCHES WITHIN THIS SPACE. INSTALL MONITOR MODULES AS REQUIRED TO CONNECT TO FIRE ALARM SYSTEM.



- KEY PLAN**
- LEGEND:**
- E EXISTING TO REMAIN
 - ER EXISTING RELOCATED
 - NR NEW TO REPLACE EXISTING IN EXISTING LOCATION
 - R EXISTING TO BE REMOVED
 - RR REMOVE & RELOCATE EXISTING
 - HA FIRE ALARM HORN / LIGHT
 - MS MULTI-CANDELA STROBE
 - MSK MULTI-CANDELA SPEAKER/STROBE
 - MSM CEILING MOUNTED MULTI-CANDELA SPEAKER/STROBE
 - HT FIRE ALARM SYSTEM CEILING MOUNTED HEAT DETECTOR - 'EL' FOR ELEVATOR SHUNT TRIP
 - HTD FIRE ALARM SYSTEM CEILING MOUNTED SMOKE DETECTOR - 'EL' FOR ELEVATOR RECALL
 - MPS WALL MOUNTED FIRE ALARM SYSTEM MANUAL PULL STATION
 - JB JUNCTION BOX
 - DOOR DOOR HOLD-OPEN DEVICE CONNECTION
 - PS FIRE ALARM SYSTEM/SPRINKLER SYSTEM PRESSURE SWITCH
 - FS FIRE ALARM SYSTEM/SPRINKLER SYSTEM FLOW SWITCH
 - TS FIRE ALARM SYSTEM/SPRINKLER SYSTEM TAMPER SWITCH
 - SDM FIRE ALARM SYSTEM DUCT MOUNTED SMOKE DETECTOR
 - FACP FIRE ALARM SYSTEM CONTROL PANEL
 - FAPA FIRE ALARM ANNUNCIATOR
 - GS GAS SHUT-OFF
 - RTB RADIO TRANSMITTER BOX
 - MM MONITOR MODULE
 - TS TEST STATION
 - RM RELAY MODULE
 - AGT ANSUL GAS TANK
 - AMP FIRE ALARM AMPLIFIER

---	---	---
---	---	---
---	---	---
0	ISSUED FOR BID	06.12.15
REV.	DESCRIPTION	DATE

ISSUED FOR BID
06.12.15



WBRC
ARCHITECTS • ENGINEERS
WWW.WBRC.AE.COM
BANGOR, MAINE 207-647-4511
PORTLAND, MAINE 207-629-4511
SUWANEEVILLE, FLORIDA 351-550-0757

**PORTLAND HIGH SCHOOL
FIRE ALARM UPGRADES**

PROJECT: PORTLAND, ME
SECOND FLOOR - SEG. A FIRE ALARM PLAN

SHEET TITLE:	404100 - FA103A
WBRC CAD FILE:	404100 GRAPHIC SCALE: 0"
PROJECT No.:	AS NOTED
SCALE:	S/JL SHEET No. FA103A
PROJECT MANAGER:	KRM
DRAWN BY:	S/JL
CHECKED BY:	

A1 SECOND FLOOR - SEG. A FIRE ALARM PLAN
1/8" = 1'-0"