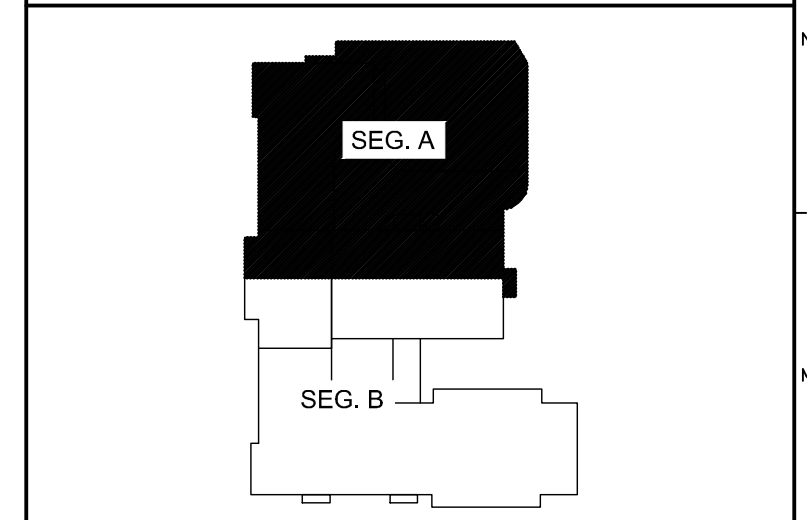


6/16/2015 2:42 PM I:\401-1100\401100 PORTLAND HIGH SCHOOL FIRE ALARM SYSTEM\2 DESIGN\DWG\PORTLAND SCHOOL EXISTING DRAWINGS\0102A FIRST FLOOR - SEG. A FIRE ALARM PLAN.DWG ROLLAHAR



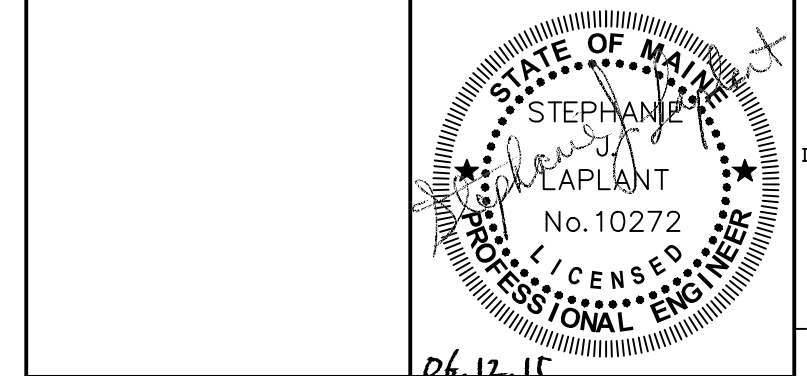
- TECHNICAL NOTES:**
- UTILIZE EXISTING JUNCTION BOX AT THIS LOCATION FOR NEW FIA DEVICE.
 - LOWER EXISTING MANUAL PULL STATION TO 48" AFF.
 - PROVIDE CONTROL MODULE FOR RELEASE OF MAGNETIC DOOR HOLDER.
 - CONNECT POWER FOR AMPLIFIER TO 1P20A CIRCUIT BREAKER IN EXISTING POLE SPACE IN EXISTING PANEL IN CORR. REFER TO SHEET FA102B FOR LOCATION.
 - MAINTAIN EXISTING SPRINKLER FLOW, TAMPER AND/OR PRESSURE SWITCHES WITHIN THIS SPACE. INSTALL MONITOR MODULES AS REQUIRED TO CONNECT TO FIRE ALARM SYSTEM.



- KEY PLAN**
- LEGEND:**
- E EXISTING TO REMAIN
 - ER EXISTING RELOCATED
 - NR NEW TO REPLACE EXISTING IN EXISTING LOCATION
 - R EXISTING TO BE REMOVED
 - RR REMOVE & RELOCATE EXISTING
 - HA FIRE ALARM HORN / LIGHT
 - MS MULTI-CANDELA STROBE
 - MS-1 MULTI-CANDELA SPEAKER/STROBE
 - MS-2 CEILING MOUNTED MULTI-CANDELA SPEAKER/STROBE
 - 71 FIRE ALARM SYSTEM CEILING MOUNTED HEAT DETECTOR - 'EL' FOR ELEVATOR SHUNT TRIP
 - 72 FIRE ALARM SYSTEM CEILING MOUNTED SMOKE DETECTOR - 'EL' FOR ELEVATOR RECALL
 - 73 WALL MOUNTED FIRE ALARM SYSTEM MANUAL PULL STATION
 - 74 KNOX BOX
 - 75 JUNCTION BOX
 - 76 DOOR HOLD-OPEN DEVICE CONNECTION
 - 77 FIRE ALARM SYSTEM/SPRINKLER SYSTEM PRESSURE SWITCH
 - 78 FIRE ALARM SYSTEM/SPRINKLER SYSTEM FLOW SWITCH
 - 79 FIRE ALARM SYSTEM/SPRINKLER SYSTEM TAMPER SWITCH
 - 80 FIRE ALARM SYSTEM DUCT MOUNTED SMOKE DETECTOR
 - FACP FIRE ALARM SYSTEM CONTROL PANEL
 - FAA FIRE ALARM ANNUNCIATOR
 - GS GAS SHUT-OFF
 - RT RADIO TRANSMITTER BOX
 - MM MONITOR MODULE
 - TS TEST STATION
 - RM RELAY MODULE
 - AG ANSUL GAS TANK
 - AMP FIRE ALARM AMPLIFIER

| REV. | DESCRIPTION | DATE |
|------|----------------|----------|
| 0 | ISSUED FOR BID | 06.12.15 |

ISSUED FOR BID
06.12.15



WBRC
ARCHITECTS • ENGINEERS
WWW.WBRC.COM
BANGOR, MAINE 207-647-4511
PORTLAND, MAINE 207-838-4511
SUWANEE, FLORIDA 904-556-0075

**PORTLAND HIGH SCHOOL
FIRE ALARM UPGRADES**

PROJECT: PORTLAND, ME

FIRST FLOOR - SEG. A FIRE ALARM PLAN

| | |
|------------------|--------------------------|
| SHEET TITLE: | 404100 - FA102A |
| WBRC CAD FILE: | 404100 |
| PROJECT No.: | 404100 GRAPHIC SCALE: 0" |
| SCALE: | AS NOTED |
| PROJECT MANAGER: | S/JL |
| DRAWN BY: | KRM |
| CHECKED BY: | S/JL |
| FA102A | |

A1 FIRST FLOOR - SEG. A FIRE ALARM PLAN

1/8" = 1'-0"