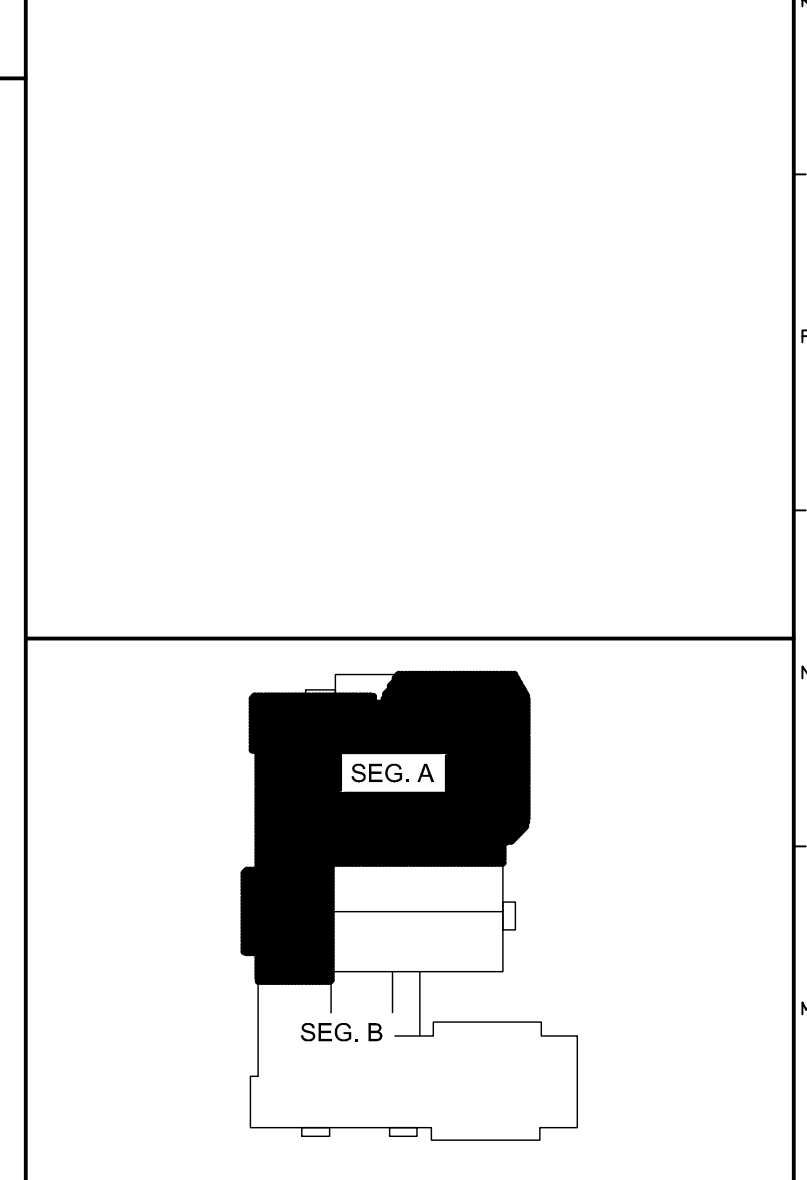


6/16/2015 2:41 PM (V:\401-1100\404100 PORTLAND HIGH SCHOOL FIRE ALARM SYSTEM\2 DESIGN\WORKSHEETS\BASING\PORTLAND SCHOOL EXISTING DRAWINGS\SHEETS\FA100 BASEMENT.DWG - KYLE MAHAR



TECHNICAL NOTES:

- ① UTILIZE EXISTING JUNCTION BOX AT THIS LOCATION FOR NEW FIA DEVICE.
- ② LOWER EXISTING MANUAL PULL STATION TO 48" AFF.
- ③ PROVIDE CONTROL MODULE FOR RELEASE OF MAGNETIC DOOR HOLDER.
- ④ MAINTAIN EXISTING SPRINKLER FLOW, TAMPER AND/OR PRESSURE SWITCHES WITHIN THIS SPACE. INSTALL MONITOR MODULES AS REQUIRED TO CONNECT TO FIRE ALARM SYSTEM.

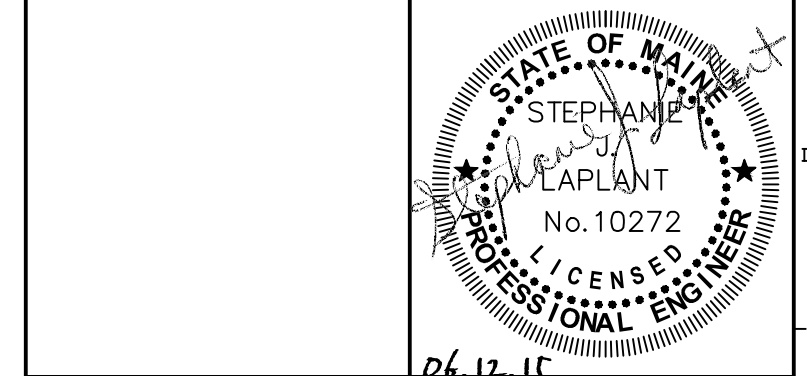


KEY PLAN

- LEGEND:**
- E EXISTING TO REMAIN
 - ER EXISTING RELOCATED
 - NR NEW TO REPLACE EXISTING IN EXISTING LOCATION
 - R EXISTING TO BE REMOVED
 - RR REMOVE & RELOCATE EXISTING
 - △ FIRE ALARM HORN / LIGHT
 - ▽ MULTI-CANDELA STROBE
 - ⊠ MULTI-CANDELA SPEAKER/STROBE
 - ⊞ CEILING MOUNTED MULTI-CANDELA SPEAKER/STROBE
 - ⊟ FIRE ALARM SYSTEM CEILING MOUNTED HEAT DETECTOR - 'EL' FOR ELEVATOR SHUNT TRIP
 - ⊠ FIRE ALARM SYSTEM CEILING MOUNTED SMOKE DETECTOR - 'EL' FOR ELEVATOR RECALL
 - ⊡ WALL MOUNTED FIRE ALARM SYSTEM MANUAL PULL STATION
 - ⊞ KNOX BOX
 - ⊡ JUNCTION BOX
 - ⊞ DOOR HOLD-OPEN DEVICE CONNECTION
 - ⊞ FIRE ALARM SYSTEM/SPRINKLER SYSTEM PRESSURE SWITCH
 - ⊞ FIRE ALARM SYSTEM/SPRINKLER SYSTEM FLOW SWITCH
 - ⊞ FIRE ALARM SYSTEM/SPRINKLER SYSTEM TAMPER SWITCH
 - ⊞ FIRE ALARM SYSTEM DUCT MOUNTED SMOKE DETECTOR
 - ⊞ FIRE ALARM SYSTEM CONTROL PANEL
 - ⊞ FIRE ALARM ANNUNCIATOR
 - ⊞ GAS SHUT-OFF
 - ⊞ RADIO TRANSMITTER BOX
 - ⊞ MONITOR MODULE
 - ⊞ TEST STATION
 - ⊞ RELAY MODULE
 - ⊞ ANSUL GAS TANK
 - ⊞ FIRE ALARM AMPLIFIER

REV.	DESCRIPTION	DATE
0	ISSUED FOR BID	06.12.15

ISSUED FOR BID
06.12.15



WBRC
ARCHITECTS • ENGINEERS
WWW.WBRC.AE.COM
BANGOR, MAINE 207-647-4511
PORTLAND, MAINE 207-839-4511
SARASOTA, FLORIDA 941-556-0075

**PORTLAND HIGH SCHOOL
FIRE ALARM UPGRADES**

PROJECT: PORTLAND, ME
BASEMENT FIRE ALARM PLAN

SHEET TITLE:	404100 - FA100	
WBRC CAD FILE:	404100	GRAPHIC SCALE: 0"
PROJECT No.:	AS NOTED	
SCALE:		
PROJECT MANAGER:	S/JL	SHEET No.
DRAWN BY:	KRM	FA100
CHECKED BY:	S/JL	

A7	BASEMENT FIRE ALARM PLAN
1/8" = 1'-0"	--