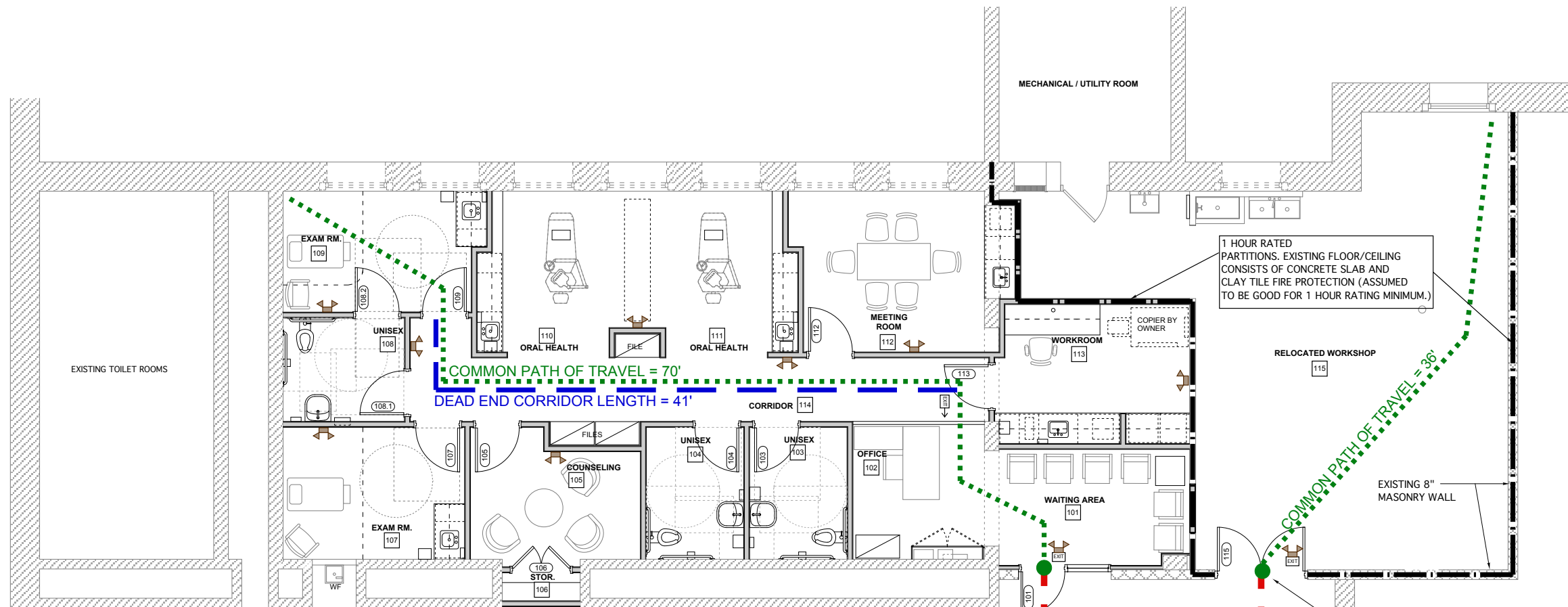
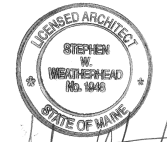




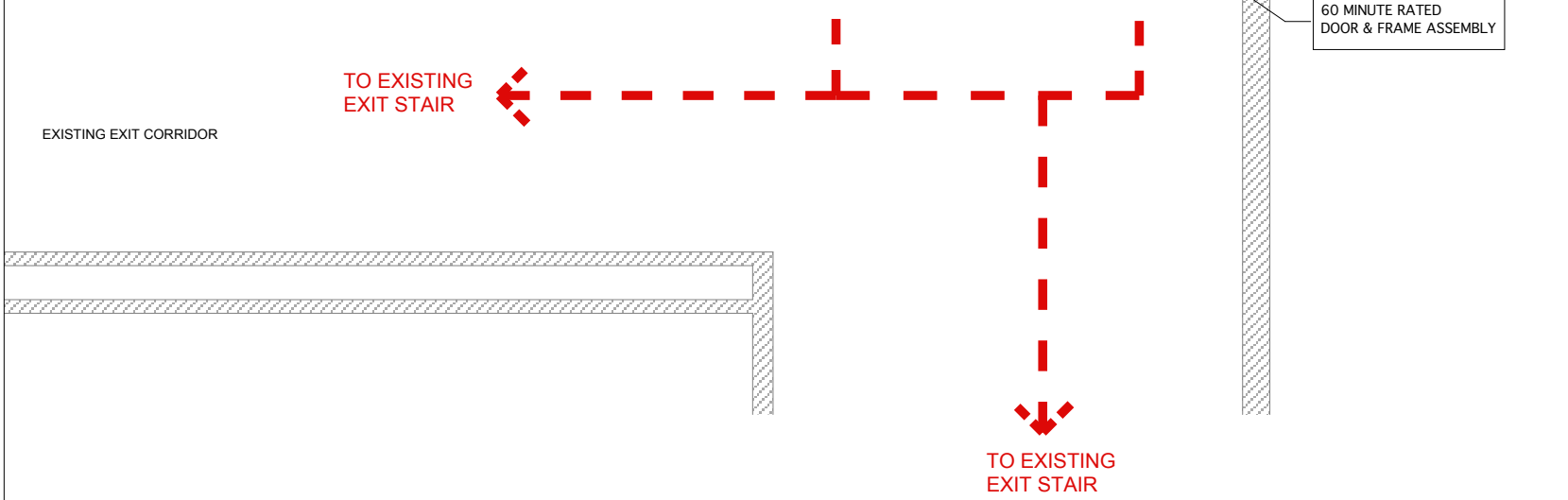
Winton Scott Architects
5 Milk Street
Portland, Maine 04101
207 774 4811
www.wintonsscott.com

Architecture / Planning
Preservation Architecture
Interior Architecture



CODE SUMMARY:
2009 - NFPA 101 / 2009 - IBC

- Work Area Square Footage: CLINIC AREA: 1,491 S.F. ; WORKSHOP: 696 S.F.
- Building Fire Safety Features: Automatic supervised sprinkler, detection, & alarm systems installed.
- Construction Type: IBC: Type IIB, NFPA: Type II (000)
- Tenant Use Group: IBC: Educational (E) / NFPA: Educational.
Both the workshop and clinic are incidental uses within the Educational Use per requirements of NFPA section 6.1.14.1.3 (1) and therefore follow the provisions of the code pertaining to Educational Use.
- Protection from Hazards:
Under section 14.3.2.1 (2)(b) the scenery workshop is required to be separated from the rest of the building by 1 hour rated assemblies in addition to being protected by automatic sprinklers.
- Occupant Load Factor: Workshop: 50 s.f./person = 696/50 = 14 People
Clinic: Per 14.1.7.1 -Actual load based on complete simultaneous occupancy of all rooms = 25 people Max.
- Egress: (Clinic)
Per NFPA 14.2.5.5 (2) One room shall be permitted to intervene between a normally occupied student room and an exit access corridor if the following 3 criteria are met:
 - (a) The travel from the room served by an intervening room to the corridor door shall not exceed 75'.
 - (b) Clothing or other materials deemed hazardous by the AHJ are contained in metal lockers or the intervening room shall be sprinklered.
 - (c) One of the following means of protection is provided:
 - (i) The intervening room shall have approved fire detection that activates the building alarm or
 - (ii) The building is protected by an approved supervised automatic sprinkler system.
- Maximum Common Path of Travel: Per NFPA 14.2.5.3.1, Common Path of Travel of 100' is permitted when the building is protected by an automatic supervised sprinkler system.
- Maximum Dead End Corridor: Per NFPA 14.2.5.2, Maximum allowable dead end corridor is 50' when building is protected by an automatic supervised sprinkler system.
- Maximum Travel Distance to Exit: Per NFPA 14.2.6.3, sprinklered building, Maximum distance to exit is 200'.
- Corridor Rating: Per NFPA 14.3.6 (2) (a) corridors within a sprinklered building are not required to be rated provided that the walls form smoke partitions.



LIFE SAFETY PLAN PLAN

1/4" = 1'-0"

Portland High School Health Clinic

284 Cumberland Ave.
Portland, Maine

BID SET
April 24, 2013

LIFE SAFETY PLAN

1/4" = 1'-0"

C 101