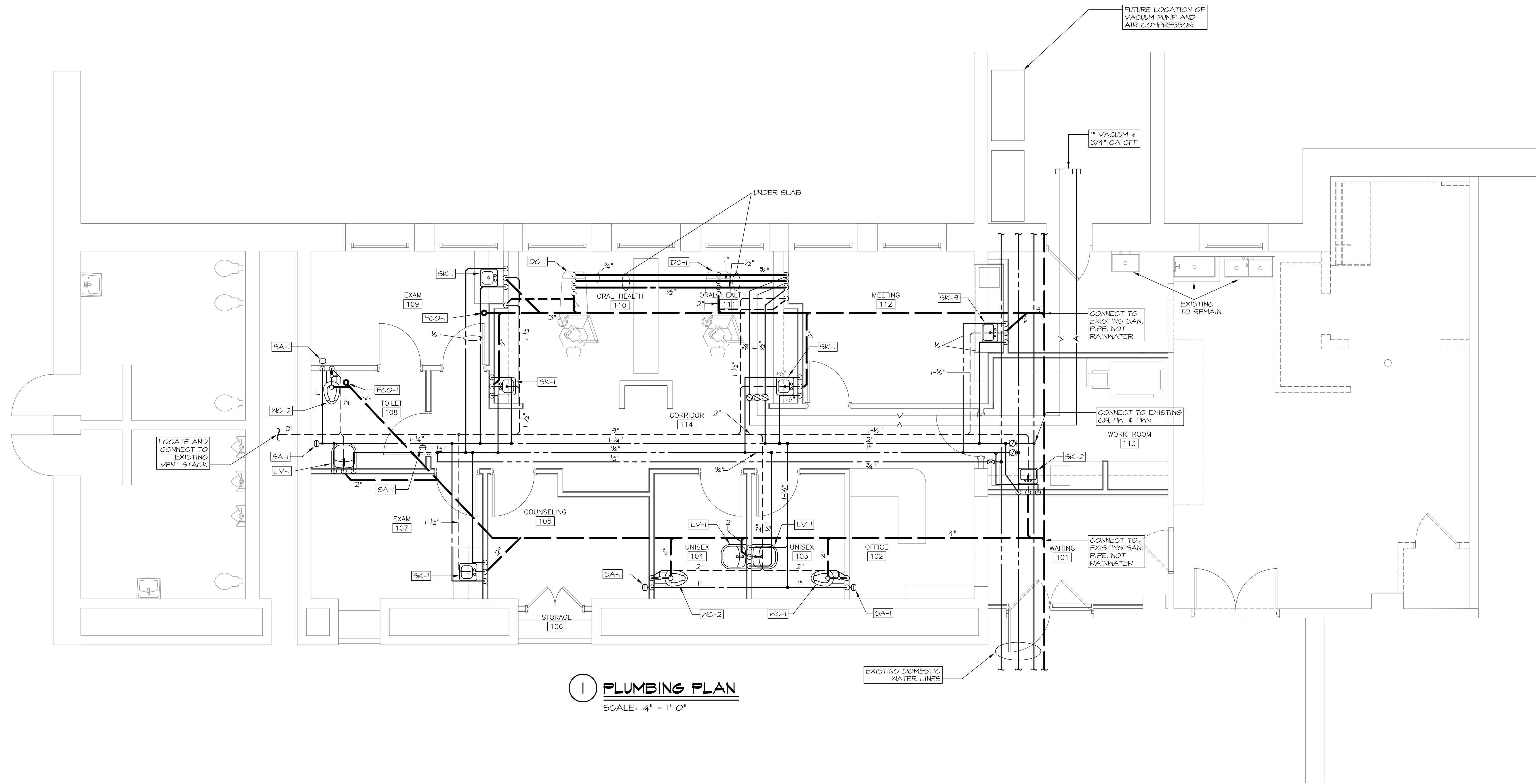
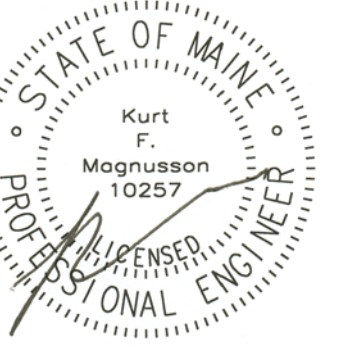


Winton Scott Architects
 5 Milk Street
 Portland, Maine 04101
 207 774 4811
 www.wintonscott.com

Architecture / Planning
 Preservation Architecture
 Interior Architecture



1 PLUMBING PLAN
 SCALE: 1/4" = 1'-0"

Portland High School Health Center

284 Cumberland Ave.
 Portland, Maine

BID SET
 April 24, 2013

Plumbing Plan

Scale: 1/4" = 1'-0"



MECHANICAL SYSTEMS ENGINEERS
 ROYAL RIVER CENTER, UNIT #10
 10 FOREST FALLS DRIVE
 YARMOUTH, MAINE 04096
 FACEBOOK: MECHANICAL SYSTEMS ENGINEERS
 207-846-1441
 M.S.E. Proj. 1310
 © COPYRIGHT 2013