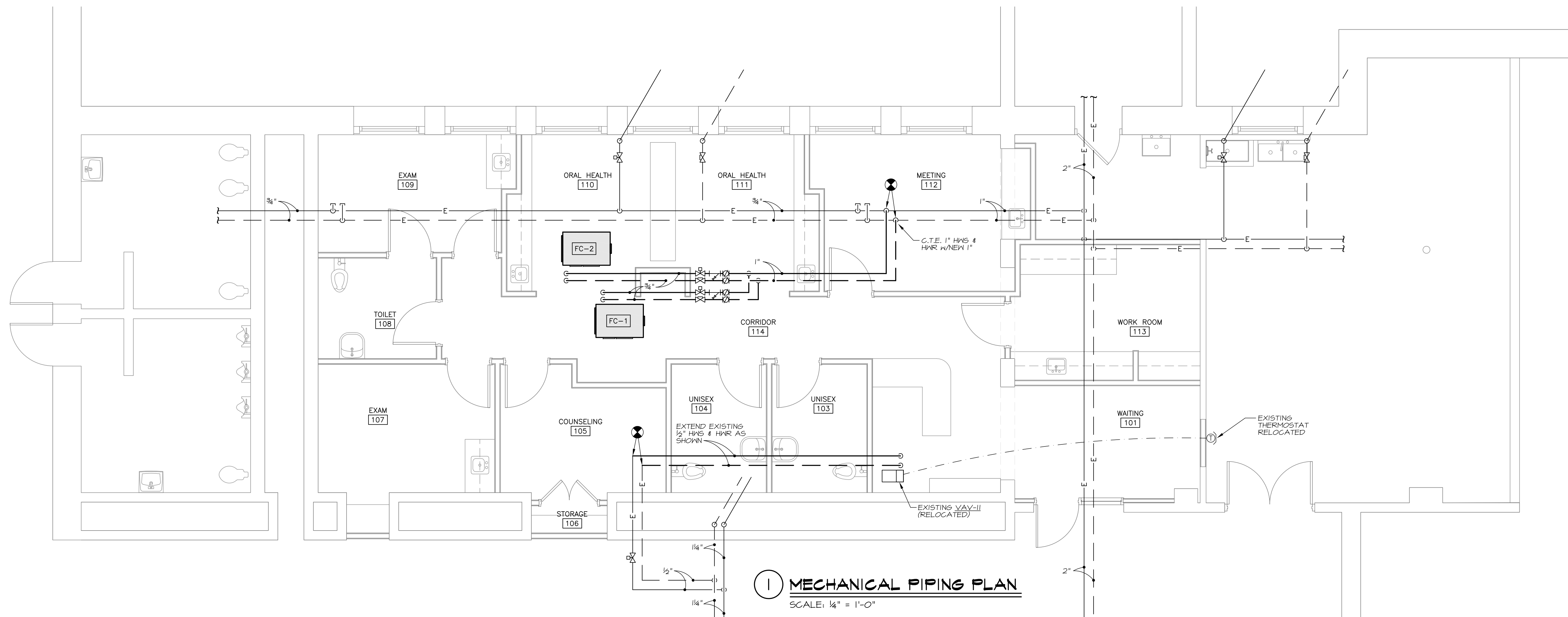
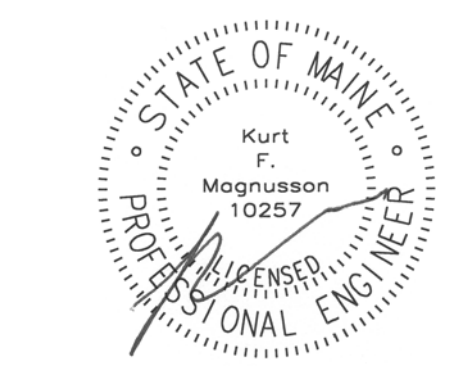
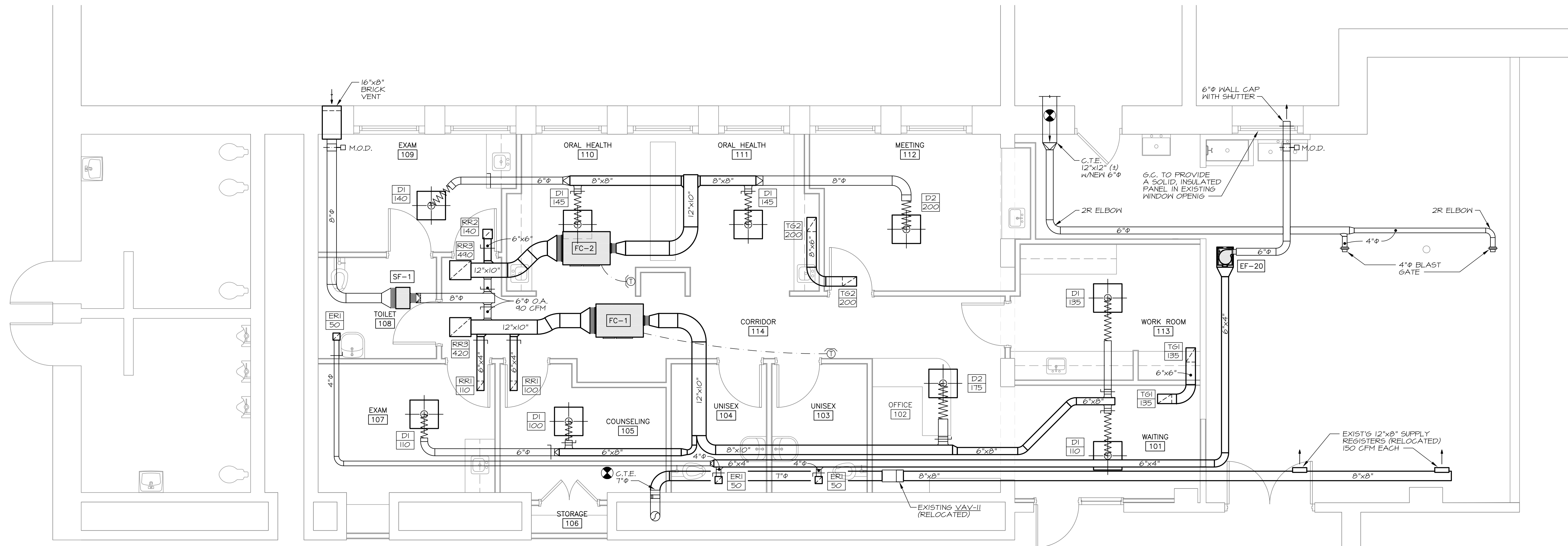


Winton Scott Architects
5 Milk Street
Portland, Maine 04101
207 774 4811
www.wintonscott.com

Architecture / Planning
Preservation Architecture
Interior Architecture



1 MECHANICAL PIPING PLAN
SCALE: 1/4" = 1'-0"



2 MECHANICAL DUCTWORK PLAN
SCALE: 1/4" = 1'-0"



MECHANICAL SYSTEMS ENGINEERS
ROYAL RIVER CENTER, UNIT #10
10 FOREST FALLS DRIVE
YARMOUTH, MAINE 04096
FACEBOOK: MECHANICAL SYSTEMS ENGINEERS
207-846-1441
M.S.E. Proj. 1310
© COPYRIGHT 2013

Portland
High School
Health Center

284 Cumberland Ave.
Portland, Maine

BID SET
April 24, 2013

Mechanical
Ductwork & Piping
Plans

Scale: 1/4" = 1'-0"

M1