

# ARCADIA

designworks LLC  
 142 high street, suite 513  
 portland, maine 04101  
 tel.: 207.347.5252

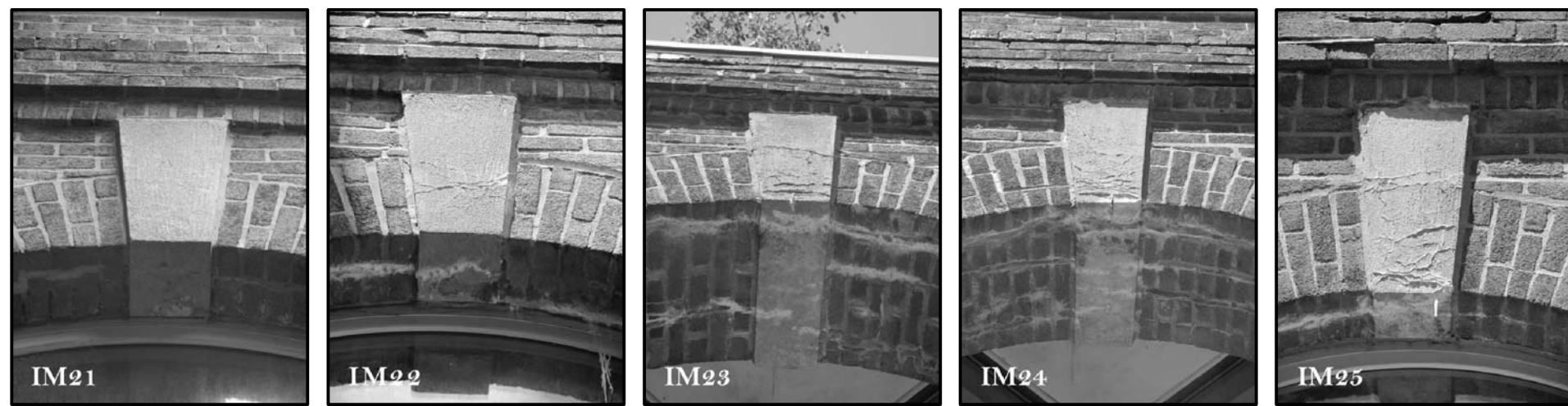
www.arcadiadesignworks.com

### GENERAL NOTES:

1. CONTRACTOR TO TAKE EXTREME CAUTION DURING DISMANTLING OF ALL EXISTING MASONRY, INCLUDING PROPER SHORING OF ALL LOAD BEARING WALLS. CARE IS TO BE TAKEN IN SALVAGE OF ALL BRICK FOR REUSE.

2. CONTRACTOR TO NOTIFY OWNER AND ARCHITECT ONCE SUBSTRATES ARE EXPOSED FOR ALL WORK TASKS, INCLUDING BUT NOT LIMITED TO ROOF DECK AND STRUCTURE, WALL CAVITIES, KEystone AND SPRING BLOCK SUBSTRATE.

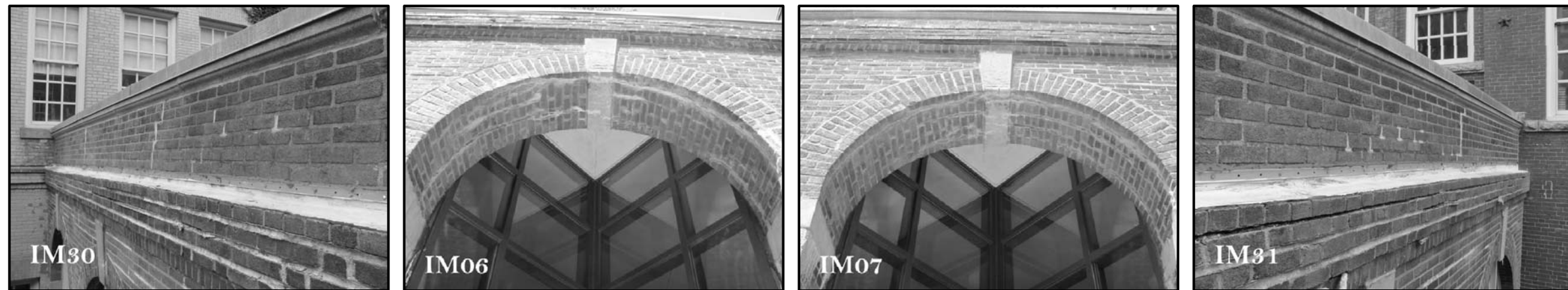
ARCADIA DESIGNWORKS, THEIR EMPLOYEES AND CONSULTANTS PROVIDE THESE DRAWINGS AS GUIDELINES FOR RESTORATION OF EXISTING DAMAGED MASONRY CONSTRUCTION. THE CONTRACTOR IS TO VERIFY DIMENSIONS OF NEW MATERIALS AND INFORM THE OWNER AND ARCHITECT OF UNFORESEEN CONDITIONS THAT MAY WARRANT FURTHER INVESTIGATION, ANALYSIS AND/OR REVISIONS TO PREVIOUS DESIGN WORK AND RESTORATION DETAILS.



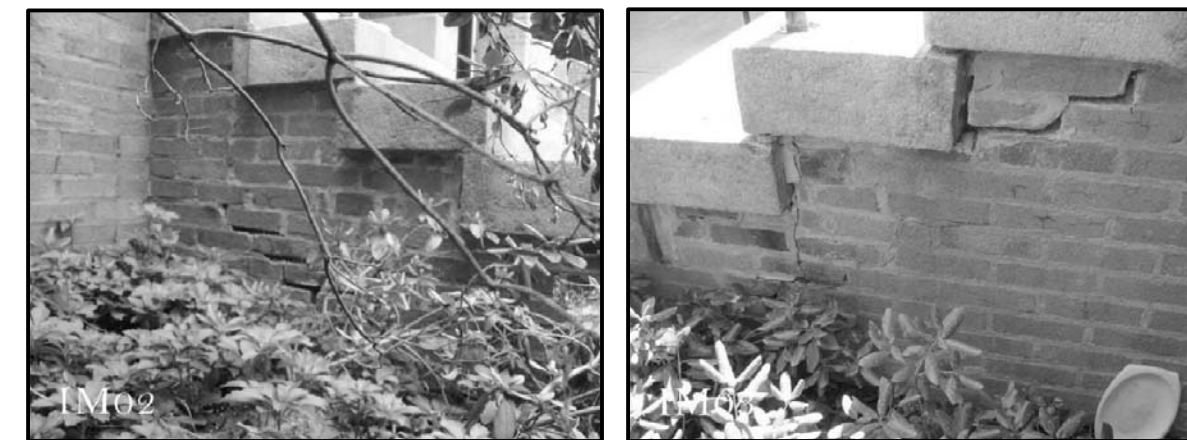
T05A KEYSTONE: REPLACE EXTERIOR FACE WITH GRANITE TO WINDOW FRAME  
 T05B KEYSTONE: REPLACE EXTERIOR FACE WITH GRANITE TO WINDOW FRAME  
 T05C KEYSTONE: REPLACE ENTIRELY W/ GRANITE STONE  
 T05D KEYSTONE: REPLACE ENTIRELY W/ GRANITE STONE  
 T05E KEYSTONE: REPLACE EXTERIOR FACE WITH GRANITE TO WINDOW FRAME



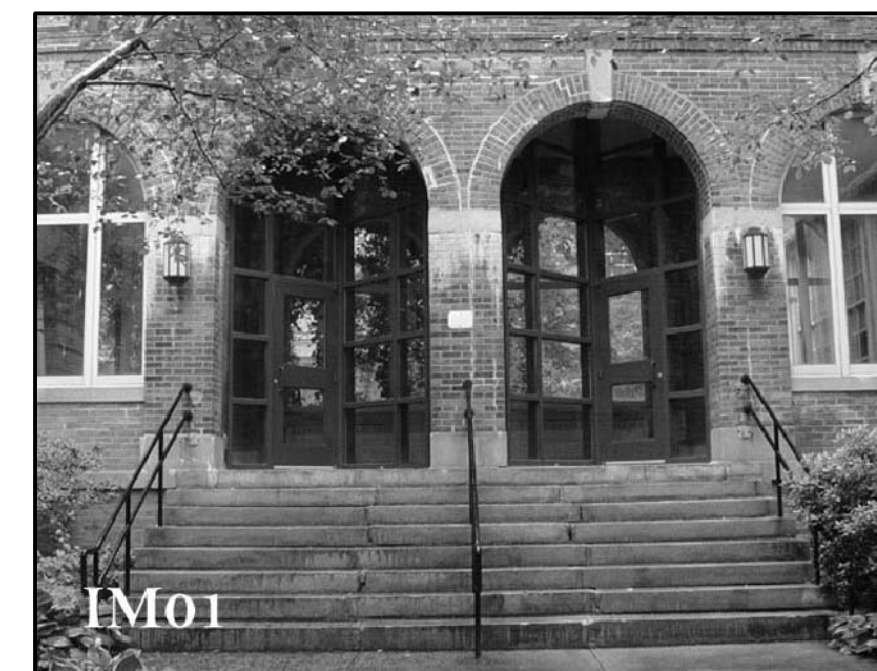
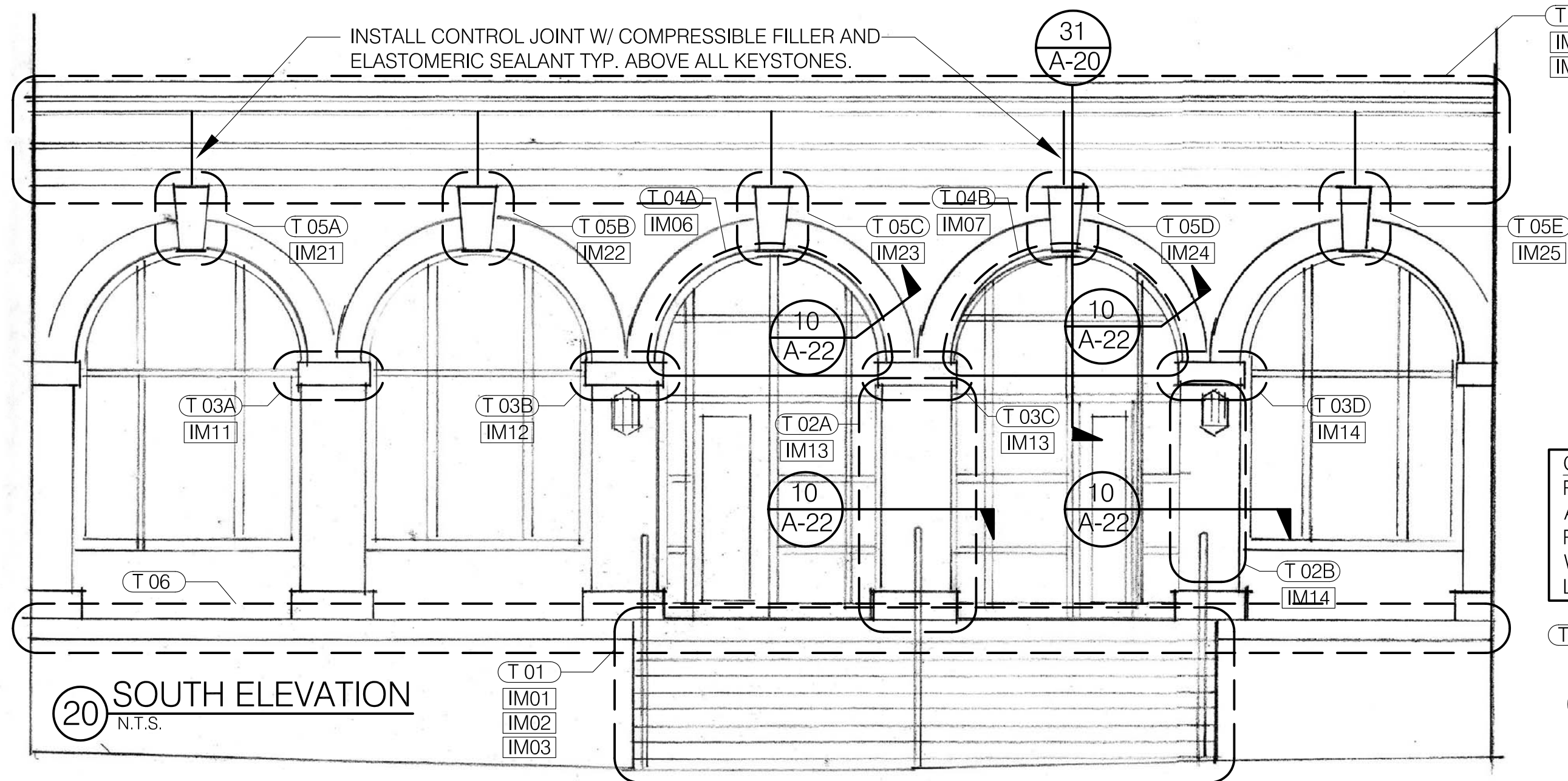
T03A SPRING BLOCK: REPLACE W/ GRANITE VENEER. CLEAN BRICK  
 T03B SPRING BLOCK: REPLACE W/ GRANITE VENEER. CLEAN BRICK  
 T03C SPRING BLOCK: REPLACE W/ GRANITE VENEER. CLEAN AND REPAIR BRICK. SEE DETAIL 10/A-22  
 T03D SPRING BLOCK: REPLACE W/ GRANITE VENEER. CLEAN AND REPAIR BRICK. SEE DETAIL 10/A-22



T06 WEST CORNICE/PARAPET WALL REPAIR AS SHOWN IN DTL 10/A-20  
 T04A WEST ENTRY ARCH. REINFORCE AND CLEAN  
 T04B EAST ENTRY ARCH. REINFORCE AND CLEAN  
 T06 EAST CORNICE/PARAPET WALL REPAIR AS SHOWN IN DTL 10/A-20

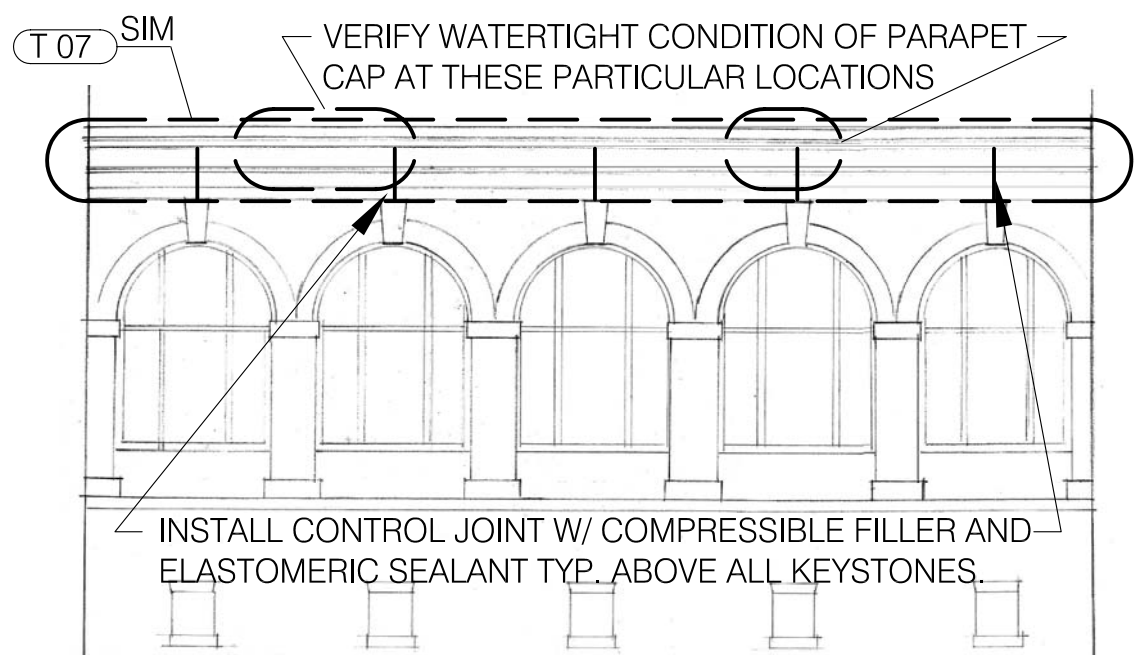


T01 WEST STAIR END WALL. CUT AND REPOINT.  
 T01 EAST STAIR END WALL. CUT AND REPOINT.



T01 SOUTH ARCADE ENTRANCE. REGROUT STEPS.

GENERAL NOTES - CUT OUT DAMAGED BRICK, SOFT MORTAR AND REMOVE ALL EFFLORESCENCE ON ALL MASONRY SURFACES INTERIOR AND EXTERIOR. INSTALL SALVAGED AND NEW BRICK AS NEEDED AND REPOINT ALL BRICK, CEMENTITIOUS BASES, AND SEAL ALL GAPS IN WINDOWS AND DOORS. CONSULT ARCHITECT ON NEW BRICK LOCATIONS AND MORTAR COLOR.



GENERAL NOTE - NORTH FACADE GENERALLY IN GOOD CONDITION. CLEAN ALL MASONRY, CUT AND REPOINT MORTAR AS DEEMED NECESSARY.

### WORK TASK (T00) IMAGE (IM00)

T01 - GRANITE STEPS: REALIGN AND LEVEL AS REQUIRED FOR CONSISTANT RISER HEIGHT AND TREAD LENGTH. CUT AND REPOINT ALL VERTICAL AND HORIZONTAL JOINTS. REGROUT HANDRAILS WITH EXPANDABLE EPOXY. CUT AND REPOINT END BRICK WALLS - SEE IM02 & IM03.

T02A - MASONRY PIER: REMOVE AND REPLACE DAMAGED BRICK. RECONSTRUCT AND STITCH W/ S.S. STAPLE ANCHORS DTL 10/A-22 @ LOCATIONS SHOWN IN IM13. CUT AND POINT ALL BRICK AND BASE MORTAR.

T02B - MASONRY PIER: REMOVE AND REPLACE DAMAGED BRICK. RECONSTRUCT AND STITCH W/ S.S. STAPLE ANCHORS DTL 10/A-22 @ LOCATIONS SHOWN IN IM14. CUT AND POINT ALL BRICK AND BASE MORTAR.

T03 - SPRING BLOCK: REMOVE CEMENTITIOUS PATCH MATERIAL TO DEPTH REQUIRED FOR INSTALLATION OF NEW GRANITE VENEER. EPOXY ANCHORS TO GRANITE AND ORIGINAL CONCRETE SUBSTRATE AND GROUT W/ REPOINTING MORTAR.

T04 - ARCH SOFFIT: CUT AND REPOINT ALL BRICKWORK. INSTALL STAINLESS STEEL REINFORCING AS SHOWN ON DETAILS SHT A-20 & 22, BOTH SIDES.

T05 - KEYSTONE: CUT OUT PORTION OR ENTIRE EXISTING CEMENTITIOUS KEYSTONE AS NOTED ABOVE AND REPLACE W/ NEW GRANITE KEYSTONE. ANCHOR AS SHOWN ON DETAIL 20/A-21.

T06 - MORTAR JOINTS: CUT AND REPOINT ALL PIER BASES.

T07 - CORNICE/PARAPET WALL: REMOVE COURSES OF EXISTING BRICK AS SHOWN IN DETAIL 10/A-20. SALVAGE ALL BRICK TO BE REUSED AT LOCATIONS NEEDING REPAIR AND/OR IDENTIFIED BY ARCHITECT. REINFORCE, FLASH AND CAP REINSTALLED BRICK. CUT AND POINT ALL BRICK FROM ROWLOCK COURSE TO PARAPET CAP.

08.19.2010

PHASE: MASONRY RESTORATION

PROJECT: PORTLAND HIGH SCHOOL  
 PORTLAND MAINE

TITLE: ARCADE EXT. ELEVATIONS

SHEET: A-10

JOB: AD-AR04-2010