

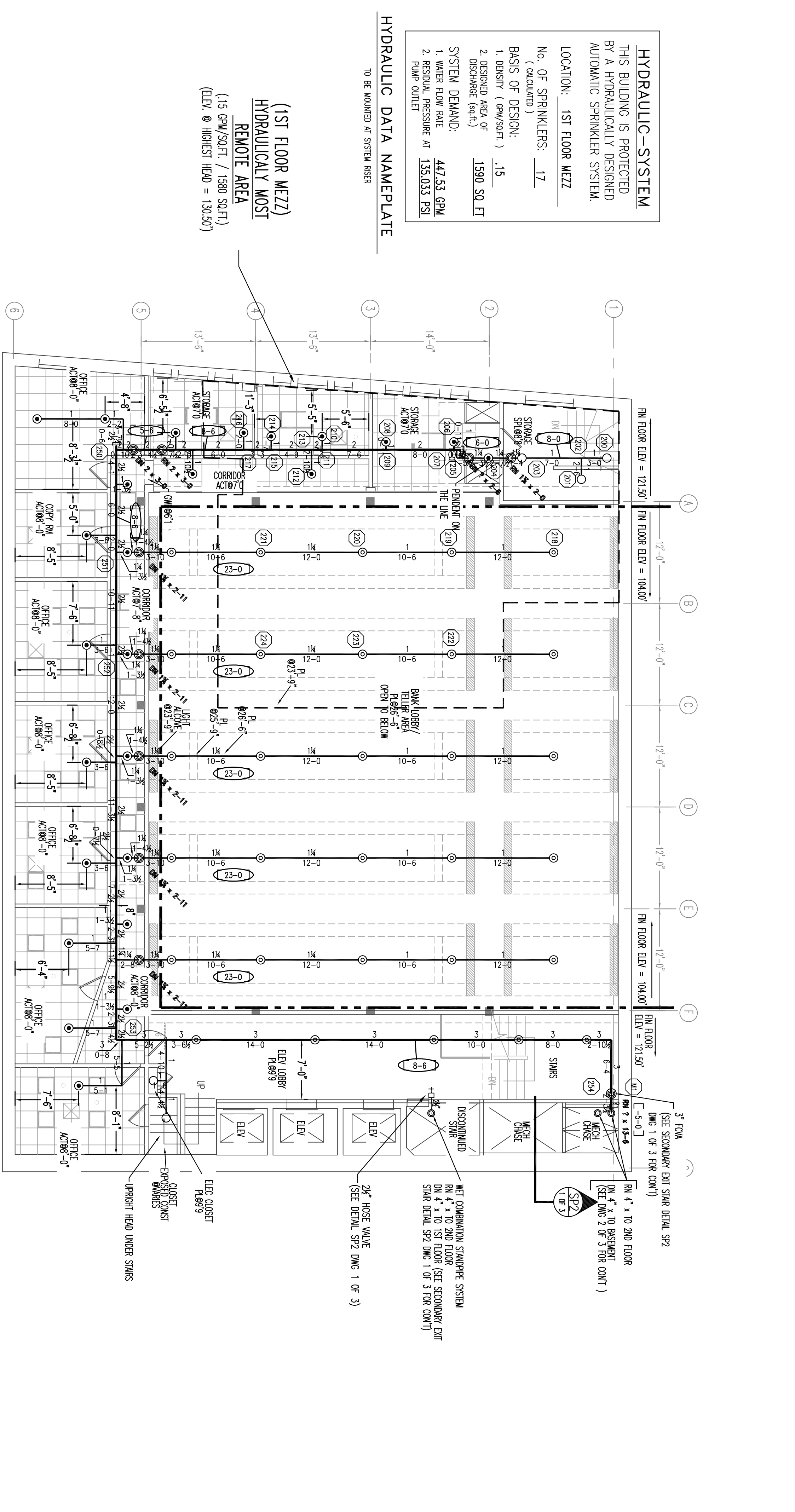
**Sprinkler Head Schedule**

Symbol	Count	Thread	K-factor	TEMP	SNIP	Description	Note
⊙	7	1/2"	5.8	200°	TK33	T-1788 WHITE RECESSED W/ WHITE ON MEZ	
○	4	1/2"	5.8	200°	TK33	T-1788 WHITE RECESSED W/ WHITE ON MEZ	
○	8	1/2"	5.8	200°	TK33	T-1788 BRASS PNEUMAT	ON SPRNG
▲	1	1"	5.8	200°	TK33	50-1 DOWN HANG DOWN WALL	

19 = Total Number of Heads this floor

FIRE SPRINKLER PLAN - FIRST FLOOR

SCALE: 1/8"=1'  
 AREA PROTECTED: 3,200 SQ.FT.  
 FINISH FLOOR ELEVATION : 104.00'  
 COLOR CODE:



**Sprinkler Head Schedule**

Symbol	Count	Thread	K-factor	TEMP	SNIP	Description	Note
⊙	23	1/2"	5.8	200°	TK33	T-1788 WHITE RECESSED W/ WHITE ON MEZ	
○	5	1/2"	5.8	200°	TK33	T-1788 BRASS PNEUMAT	ON SPRNG
⊙	30	1/2"	5.8	200°	TK33	T-1788 BRASS PNEUMAT	ON SPRNG

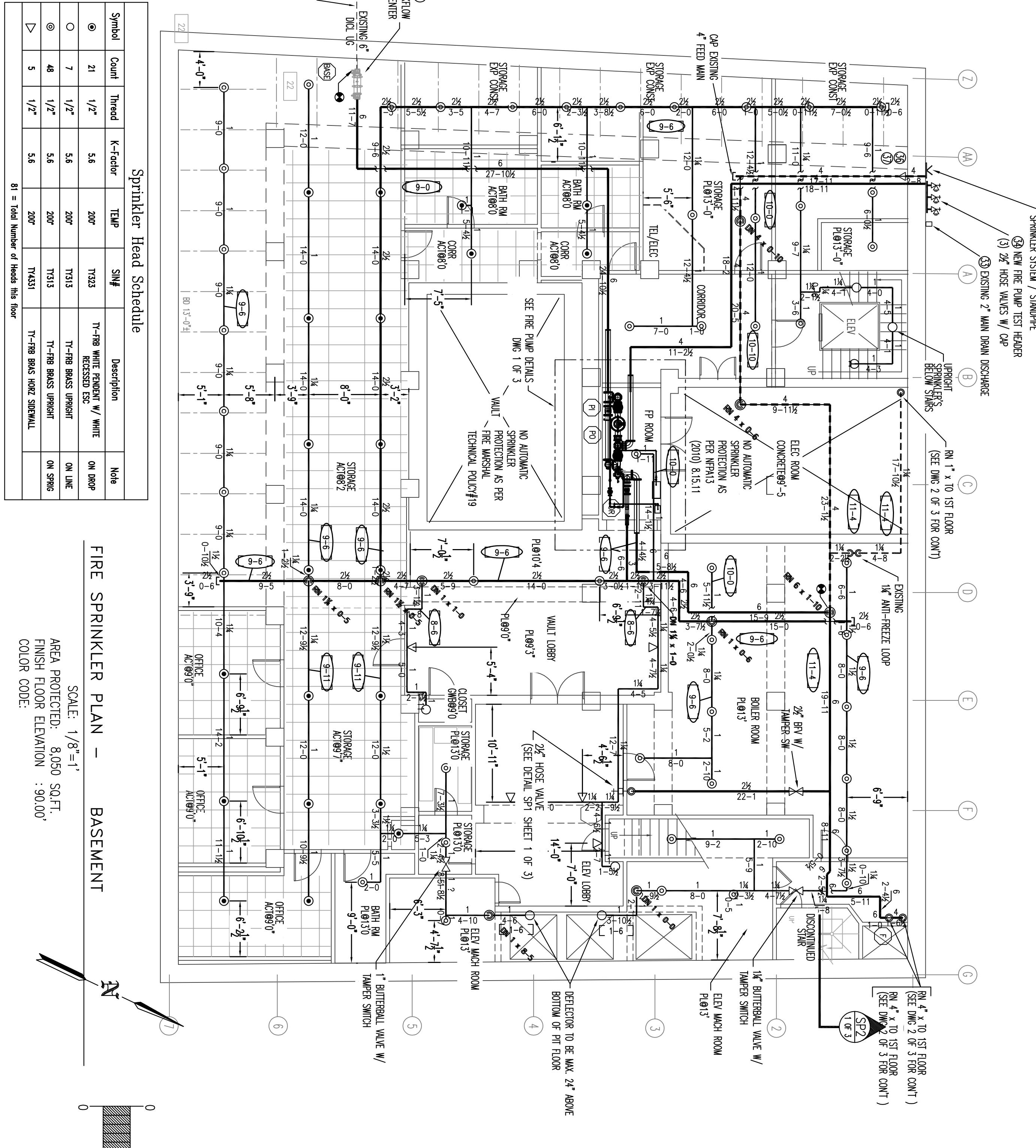
60 = Total Number of Heads this floor

FIRE SPRINKLER PLAN - FIRST FLOOR MEZZ

SCALE: 1/8"=1'  
 AREA PROTECTED: 6,400 SQ.FT.  
 FINISH FLOOR ELEVATION : 104.00' / 121.50'  
 COLOR CODE:

**HYDRAULIC SYSTEM**  
 THIS BUILDING IS PROTECTED BY A HYDRAULICALLY DESIGNED AUTOMATIC SPRINKLER SYSTEM.  
 LOCATION: 1ST FLOOR MEZZ  
 No. OF SPRINKLERS: 17  
 BASIS OF DESIGN:  
 1. DENSITY (CALCULATED) : .15  
 2. DESIGNED AREA OF PROTECTION (CALCULATED) : 1500 SQ. FT.  
 SYSTEM DEMAND: 447.53 GPM  
 1. WATER FLOW RATE  
 2. RESIDUAL PRESSURE AT 150.033 PSI  
 PUMP OUTLET  
 TO BE REVIEWED BY SYSTEM DESIGNER

(1ST FLOOR MEZZ)  
 HYDRAULICALLY MOST REMOTE AREA  
 (15 GPM/SQ.FT. / 1500 SQ.FT.)  
 (ELEV. @ HIGHEST HEAD = 130.00')



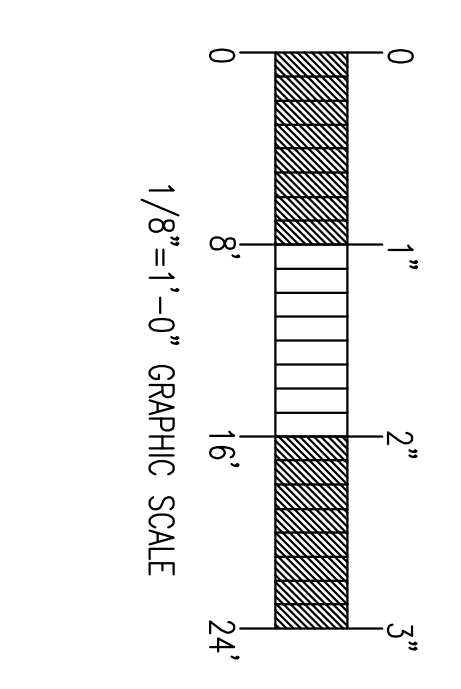
**Sprinkler Head Schedule**

Symbol	Count	Thread	K-factor	TEMP	SNIP	Description	Note
⊙	21	1/2"	5.8	200°	TK33	T-1788 WHITE RECESSED W/ WHITE ON MEZ	
○	7	1/2"	5.8	200°	TK33	T-1788 BRASS PNEUMAT	ON SPRNG
○	48	1/2"	5.8	200°	TK33	T-1788 BRASS PNEUMAT	ON SPRNG
▷	5	1/2"	5.8	200°	TK33	T-1788 BRASS PNEUMAT	ON SPRNG

81 = Total Number of Heads this floor

FIRE SPRINKLER PLAN - BASEMENT

SCALE: 1/8"=1'  
 AREA PROTECTED: 8,050 SQ.FT.  
 FINISH FLOOR ELEVATION : 30.00'  
 COLOR CODE:



**GENERAL NOTES**

SPRINKLER SYSTEM INSTALLATION TO COMPLY WITH NFPA CHAPTERS 13.14, AND 20 (2010). EXPOSED BRONZE LINE PIPING 1"-2" TO BE BLACK STEEL SP40-40 JOINED BY THREADED DUCTILE IRON FITTINGS.

CONCEALED BRONZE LINE PIPING 1"-2" TO BE CPVC PLASTIC PIPE C-150 JOINED WITH GULDED CPVC FITTINGS.

MAIN PIPING 2" AND LARGER TO BE BLACK STEEL SP40-10 W/ GROUNDED RINGS & WELDED OUTLETS JOINED BY MECHANICAL COUPLERS.

OWNER TO PROVIDE SUFFICIENT HEAD THROUGHOUT BUILDING TO PREVENT FREEZING OF WATER FILLED SPRINKLER PIPING AND EQUIPMENT. (407)

**REVISIONS**

DATE	REVISIONS

**REQUIRED APPROVALS**

OWNER / ARCHITECT	DATE
STATE FIRE MARSHAL	
PORTLAND FIRE DEPARTMENT	

**5 MONUMENT SQUARE**  
 2014 FIRE PROTECTION UPGRADE  
 465 CONGRESS ST., PORTLAND, ME

OWNER: STATE FIRE MARSHAL  
 ARCHITECT: PORTLAND FIRE DEPARTMENT

CONTRACT WITH: OWNER

**EASTERN FIRE PROTECTION**  
 AUBURN/LEWISTON INDUSTRIAL PARK  
 AUBURN/LEWISTON MAINE 04210

CONTRACTOR: RNS # 388

DATE: 4-7-14

**FIRE SPRINKLER PIPING AND DETAILS**

DATE	SCALE	JOB NUMBER
4-7-14	AS NOTED	AU-5126-14

