

GENERAL NOTES

ALL WIRING TO BE DONE BY OTHERS
 ALTHOUGH NOT SPECIFIED, SOME SPRINKLER HEADS HAVE BEEN SHOWN @ CENTERLINE OF TILE. ACTUAL ORIENTATION OF HEADS WITH RESPECT TO CEILING COMPONENTS WILL VARY ACCORDING TO FIELD CONDITIONS.

SPRINKLER SYSTEM INSTALLATION TO COMPLY WITH NFPA PHAMPLET # 13.

ALL DIMENSIONS ARE SHOWN FOR GENERAL LOCATION OF SPRINKLER HEADS ; PIPING MAY VARY TO SUIT ACTUAL FIELD CONDITIONS.

ACCOUSTICAL CEILING TILE (ACT) TO BE LISTED NON-COMBUSTIBLE WITH UL FLAME SPREAD OF LESS THAN 25.

OCCUPANCY DESCRIPTION AND CLASSIFICATION:
 GENERAL OFFICES
 LIGHT HAZARD

○ = INDICATES HYDRAULIC REFERENCE POINTS.
 F.F. ⊕ INDICATES FINISH FLOOR UP TO CENTERLINE OF PIPE.

EXTENT OF WORK IN THIS CONTRACT
IS ALL PIPING AS SHOWN TO PROTECT
THE SECOND FLOOR ONLY

HYDRAULIC-SYSTEM

THIS BUILDING IS PROTECTED BY A HYDRAULICALLY DESIGNED AUTOMATIC SPRINKLER SYSTEM.

LOCATION: **SECOND FLOOR**

No. OF SPRINKLERS: **10**

(CALCULATED)

BASIS OF DESIGN:

1. DENSITY (GPM/SQ.FT.) **.1**

2. DESIGNED AREA OF DISCHARGE (sq.ft.) **1500**

SYSTEM DEMAND:

1. WATER FLOW RATE (GPM) **228**

2. RESIDUAL PRESSURE AT THE BASE OF THE RISER (PSI) **66.2**

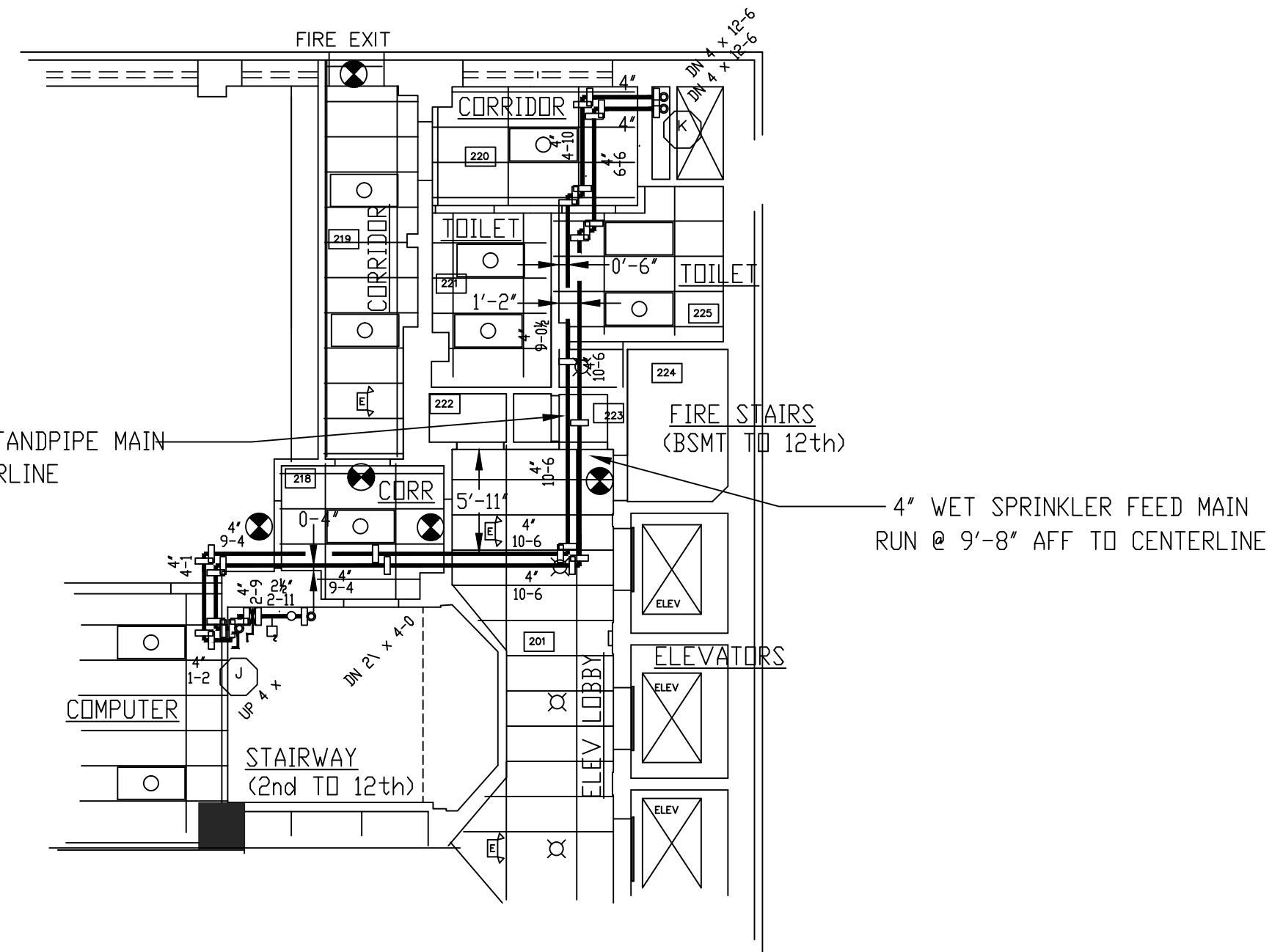
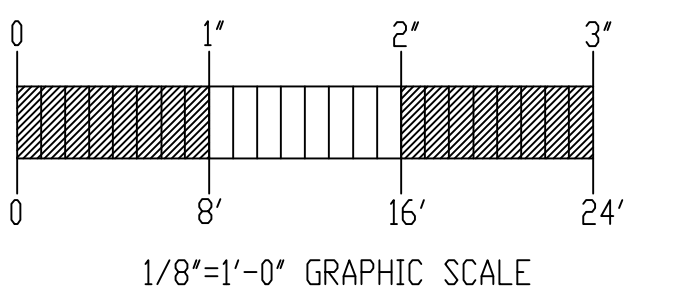
HYDRAULIC DATA NAMEPLATE

TO BE MOUNTED AT SYSTEM RISER

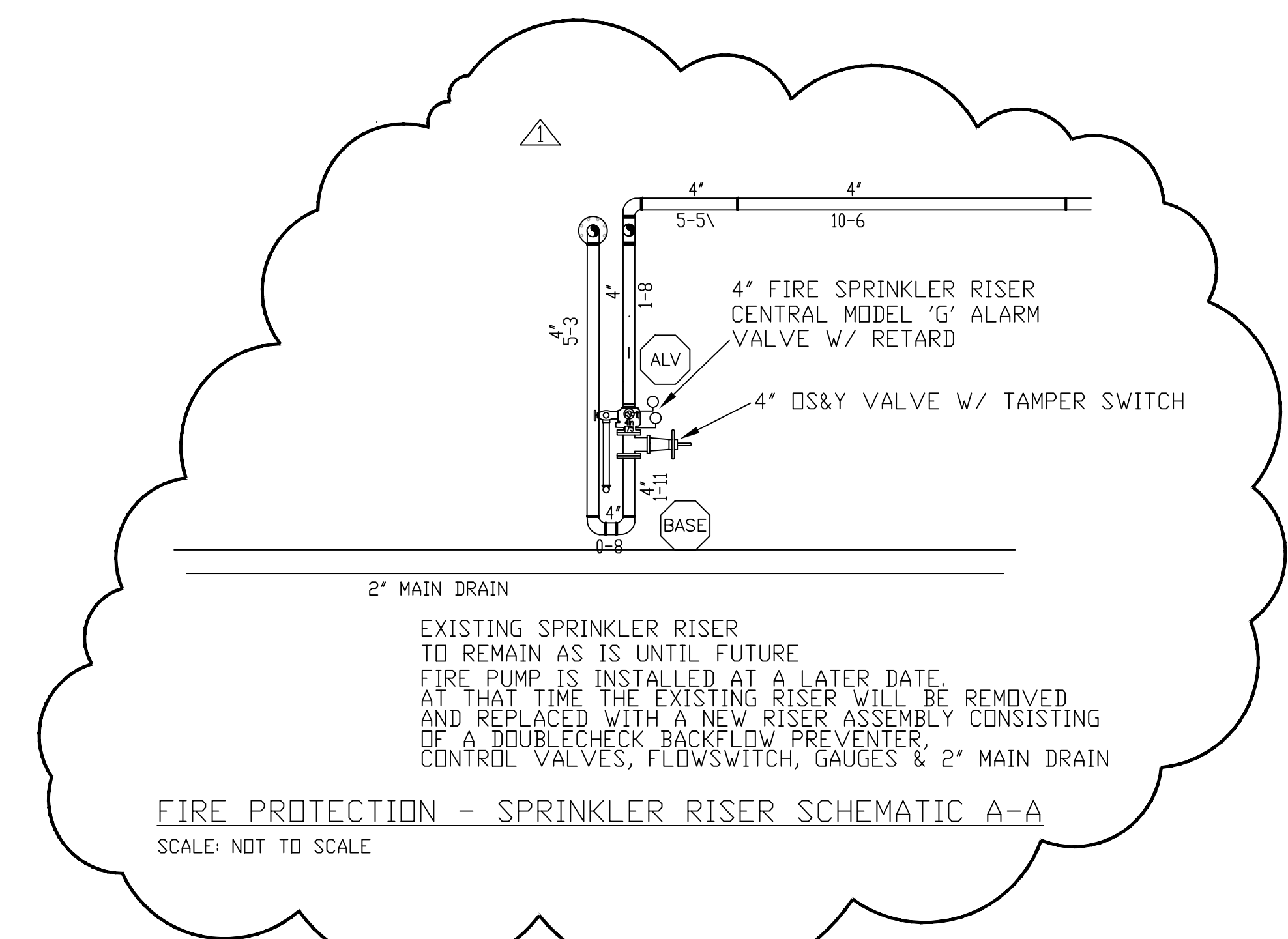
HYDRAULICALLY MOST REMOTE AREA

(LIGHT HAZARD 1 GPM / 1500 Sq. Ft.)

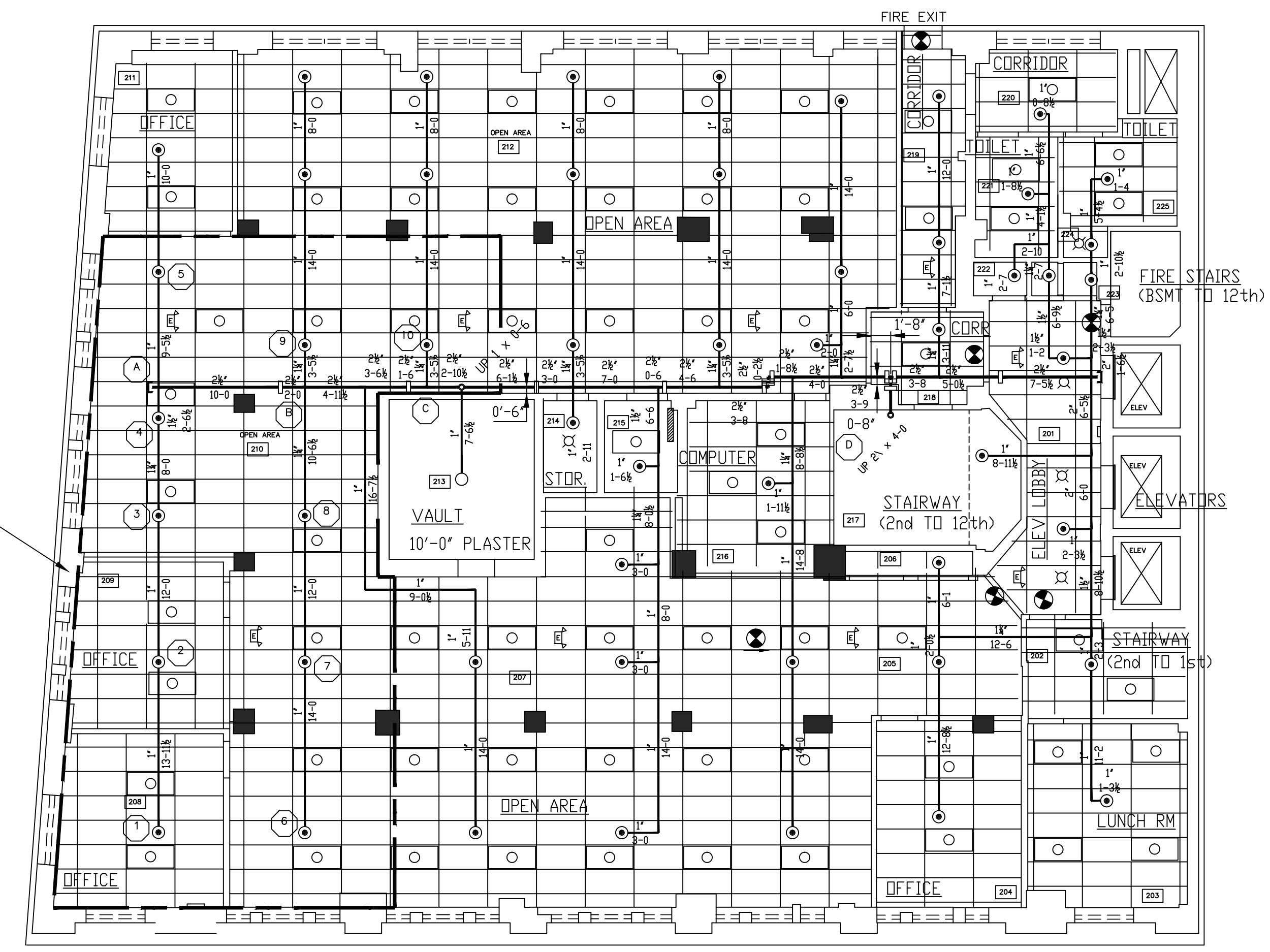
ELEV OF SPKS = 140'-0" SECOND FLOOR



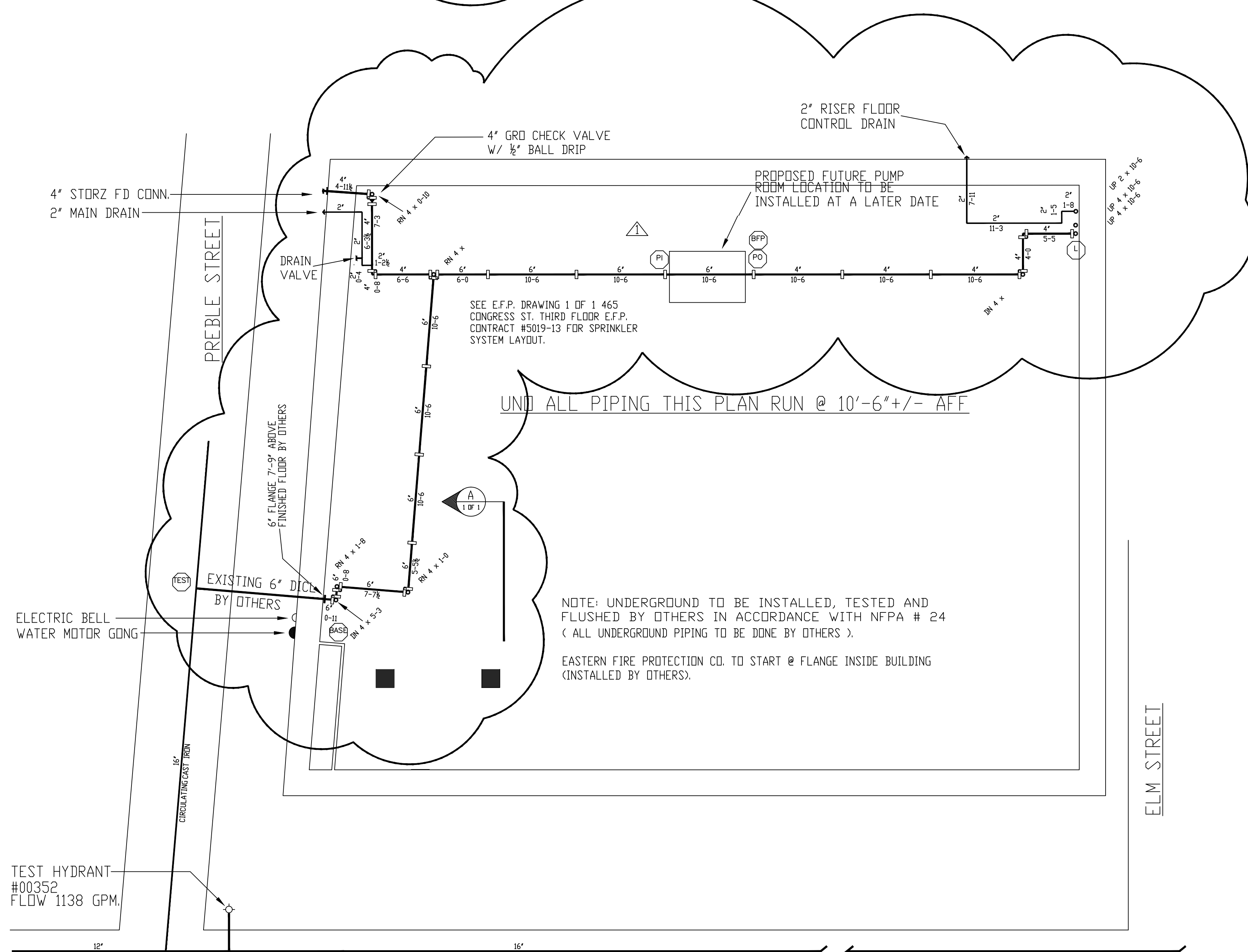
PARTIAL SECOND FLOOR PIPING
 SCALE: 1/8"=1'-0"



FIRE PROTECTION - SPRINKLER RISER SCHEMATIC A-A
 SCALE: NOT TO SCALE



FIRE SPRINKLER PLAN - SECOND FLOOR
 SCALE: 1/8"=1'
 AREA PROTECTED: 7,000 SQ.FT.
 FINISH FLOOR ELEVATION: 130'-0"

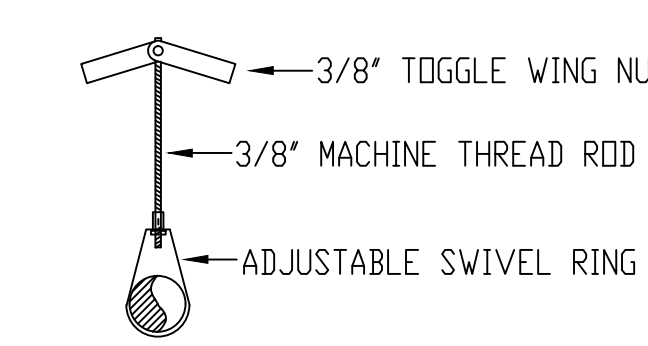


FIRE SPRINKLER PLAN - BASEMENT FLOOR
 SCALE: 1/8"=1'
 AREA PROTECTED: 7,000 SQ.FT.
 FINISH FLOOR ELEVATION: 90'-0"

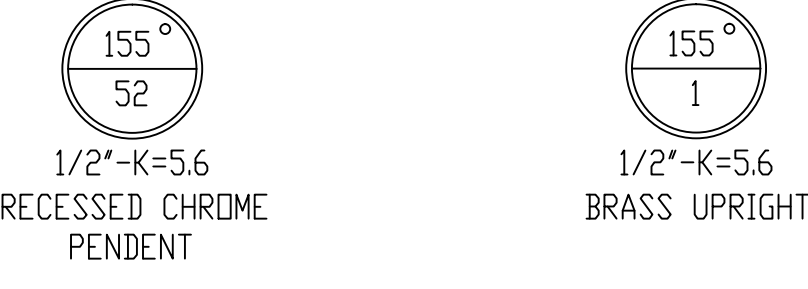
WATER DATA

STATIC: 78 PSI
 RESIDUAL: 74 PSI
 FLOW: 1138 GPM
 ELEVATION: 100'-0"
 DATE: 9/13/11

INFORMATION PROVIDED BY PORTLAND WATER DISTRICT



HANGER # 151
 FOR TERRA-COTTA STRUCTURE



ALL SPRINKLERS TO BE CENTRAL MODEL 'GB'

"REFERENCE PLAN ONLY"
 4/16/13

NOTE:
 ALL HANGERS TO BE PROVIDED AND INSTALLED AS PER NFPA # 13

GENERAL NOTES	DATE	REVISIONS	REQUIRED APPROVALS	MAINE BANK AND TRUST 465 CONGRESS AVENUE PORTLAND, MAINE CONTRACT WITH: BOULDS PROPERTY MANAGEMENT	FIRE SPRINKLER PLANS & DETAILS DWG. NO. 1 OF 1 JOB NUMBER E-2156-95 SCALE AS NOTED DATE 10/2/95
BRANCH LINE PIPING TO BE THREADABLE LIGHTWALL 'TL' BLACK PIPE JOINED BY THREADED DUCTILE IRON FITTINGS MAIN PIPING TO BE SCHEDULE # 10 BLACK WITH GROOVED ENDS & WELDED OUTLETS JOINED BY MECHANICAL COUPLINGS SPRINKLER SYSTEM INSTALLATION TO COMPLY WITH NFPA PHAMPLET # 13 OWNER TO PROVIDE SUFFICIENT HEAT THROUGHOUT BUILDING TO PREVENT FREEZING OF WATER FILLED SPRINKLER PIPING AND EQUIPMENT.	4/16/13	PLAN REVISED TO INDICATE FUTURE FIRE PUMP LOCATION AND REVISED WATER DATA	OWNER / ARCHITECT STATE FIRE MARSHAL PORTLAND FIRE DEPARTMENT OWNER'S INSURANCE CO. DRAWN BY: PHILIP RIOUX NICET LEVEL III CERT.# 067044 CHECKED BY: RCB NICET LEVEL III CERT.# 069681 CONTRACTOR LICENSE # 101 CONTRACTOR: RMS # 097		