

© 2016 RYAN SENATORE ARCHITECTURE

**OFFICE RENOVATION**  
 465 CONGRESS STREET, 7TH FLOOR, SUITE 702  
 PORTLAND, MAINE



**RYAN SENATORE ARCHITECTURE**  
 465 CONGRESS STREET  
 PORTLAND, MAINE 04101  
 207-650-6414  
 senatorearchitecture.com

CONSULTANTS:

REVISIONS:

DATE: 27 JULY 2016

PROJECT No. 1636

DRAWN BY: RRT

CHECKED BY: RJS

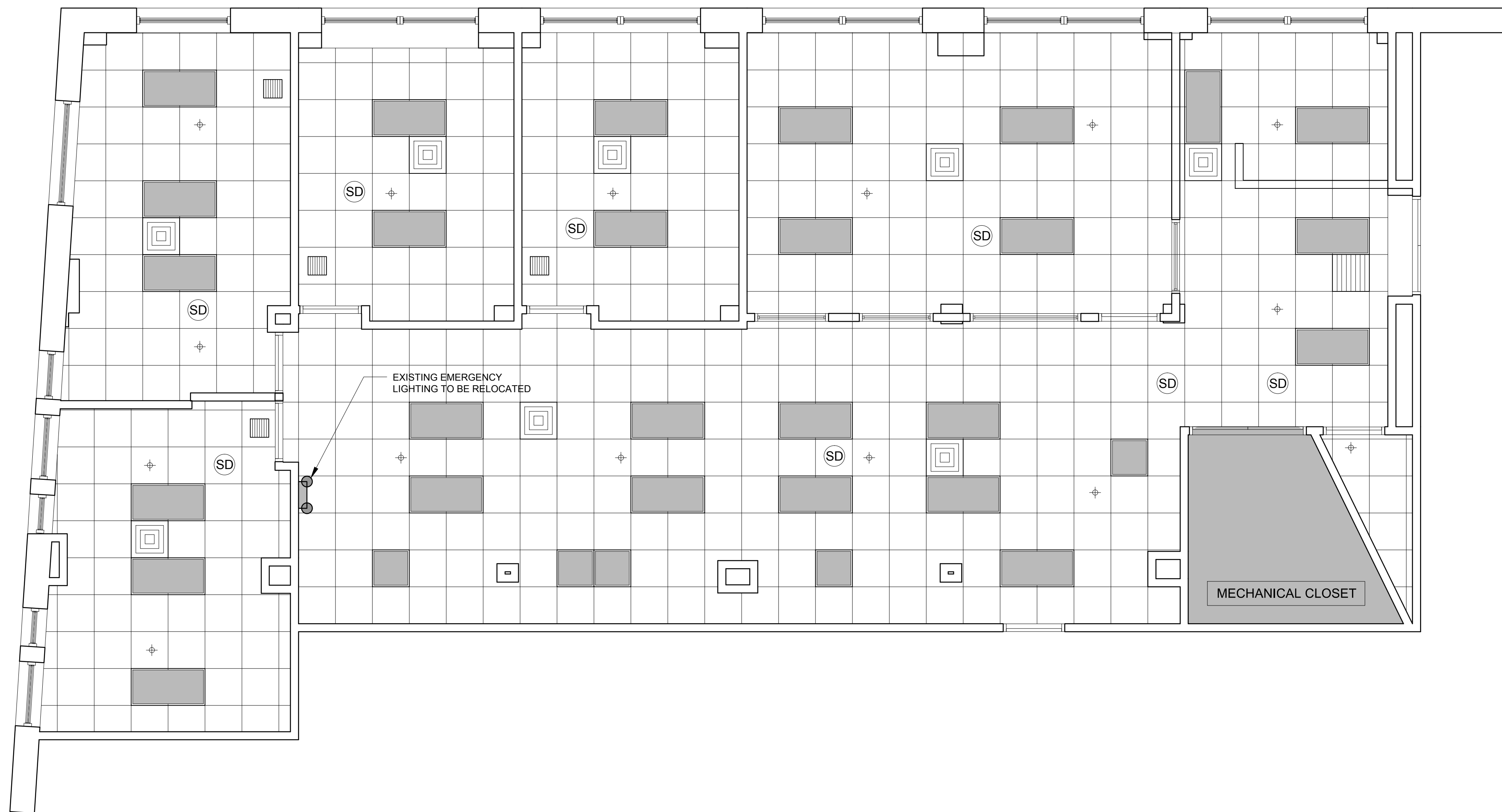
SCALE: AS NOTED

SHEET TITLE:  
 EXISTING REFLECTED CEILING PLAN

**EX-02**

**GENERAL NOTES:**  
 1.) REMOVE ALL CEILING TILES, LEAVE CEILING GRID IN PLACE  
 2.) REMOVE ALL EXISTING LIGHTING

| LEGEND | EXISTING REFLECTED CEILING PLAN |
|--------|---------------------------------|
|        | 2' X 2' GRILL IN CEILING        |
|        | EMERGENCY LIGHTING              |
|        | 2' X 4' LIGHT (REMOVE ALL)      |
|        | 2' X 2' LIGHT (REMOVE ALL)      |
|        | 1' X 1' GRILL                   |
|        | 2' X 2' GRILL                   |
|        | SMOKE DETECTOR                  |
|        | SPRINKLER HEAD                  |



1 EXISTING REFLECTED CEILING PLAN  
 1/4" = 1'-0"