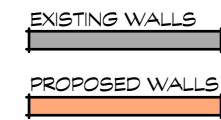
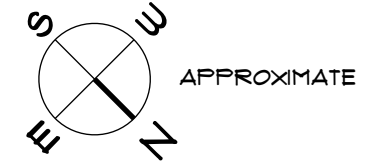


> PERMIT SET <
JUNE 16, 2015

PREBLE STREET

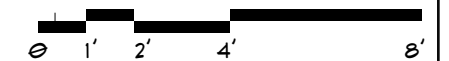


NOTES:

1. PROPOSED ALTERATIONS DO NOT AFFECT PRIMARY FUNCTION AREAS.

PLAN - SCHEMATIC

SCALE: 1/4" = 1'-0"



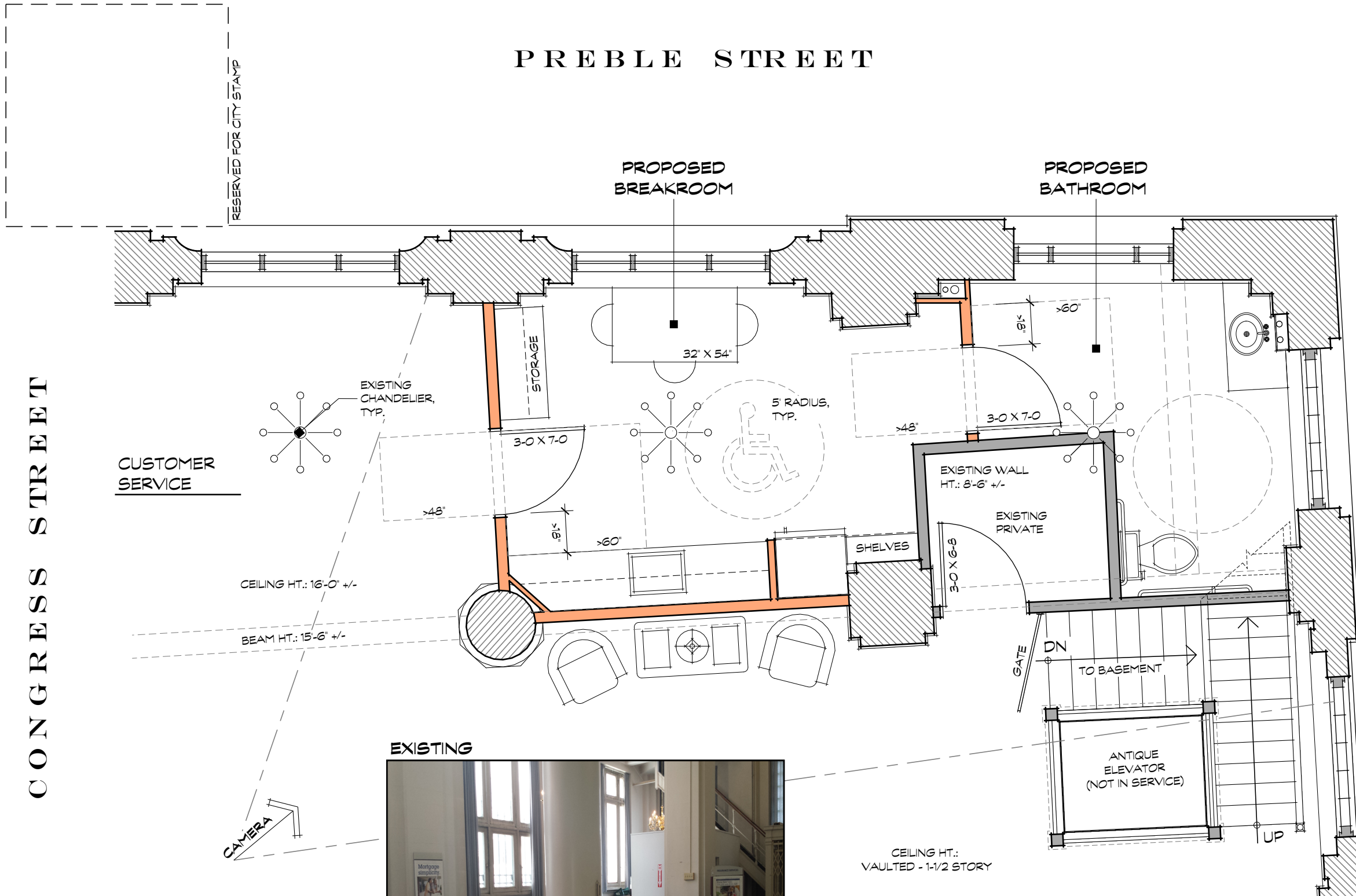
PROJECT:
INTERIOR ALTERATIONS

APPLICANT:
PEOPLES UNITED BANK
45 FEDERAL STREET
GREENFIELD, MA 01301

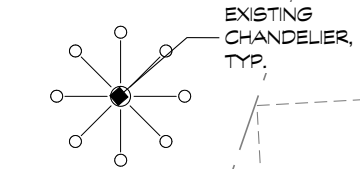
CONTRACTOR:
RC THEBERGE GC, INC.
142 HIGH STREET, STE. 323
PORTLAND, ME 04101

www.facebook.com/ALaCarteBuild

A-2



CUSTOMER SERVICE



CEILING HT.: 16'-0" +/-

BEAM HT.: 15'-6" +/-



EXISTING



MAIN LOBBY

PROPOSED BREAKROOM

32' X 54'

5' RADIUS, TYP.

STORAGE

3'-0" X 7'-0"

3'-0" X 7'-0"

SHELVES

3'-0" X 6'-6"

EXISTING WALL HT.: 8'-6" +/-

EXISTING PRIVATE

PROPOSED BATHROOM

3'-0" X 7'-0"

GATE

DN

TO BASEMENT

ANTIQUE ELEVATOR (NOT IN SERVICE)

UP

CEILING HT.: VAULTED - 1-1/2 STORY

TELLERS

RESERVED FOR CITY STAMP

CONGRESS STREET