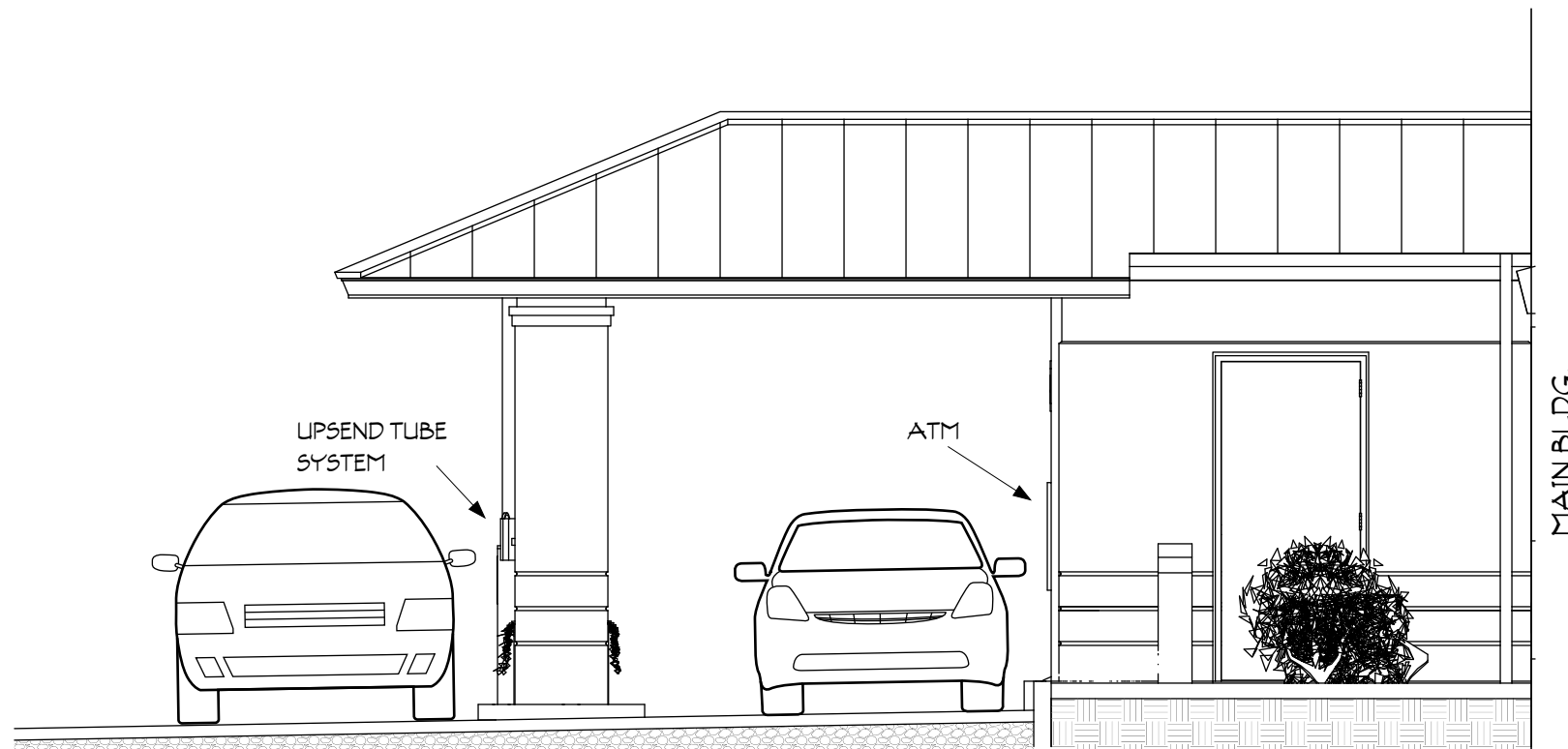
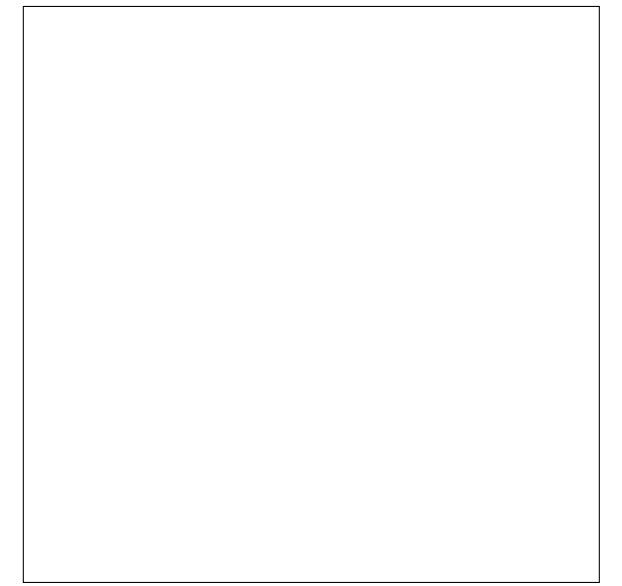


EXISTING - SW (FROM PREBLE STREET)



PROPOSED - SW



reserved for City of Portland electronic stamp

ELEVATIONS - SW

SCALE: 1/4" = 1'-0"



PEOPLE'S UNITED BANK
465-467 CONGRESS ST.

ALTERATIONS:
DRIVE-UP SERVICES

BY:
RC THEBERGE GC, INC.
41-2 GREENWOOD ROAD
BRUNSWICK, ME 04011
BOB@RCTHEBERGE.COM

FOR:
JACK GOGLIN,
DIRECTOR OF FACILITIES
PEOPLE'S UNITED BANK
45 FEDERAL STREET
GREENFIELD, MA 01301

A5.202