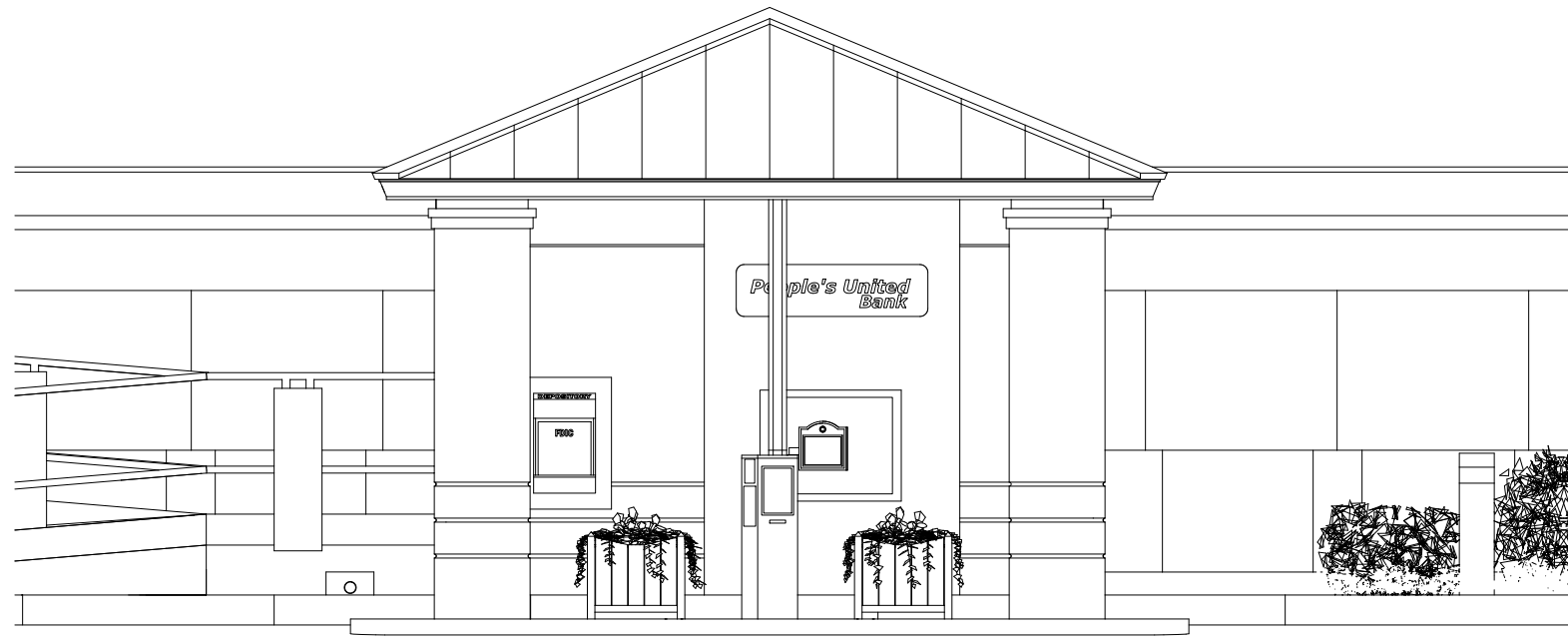
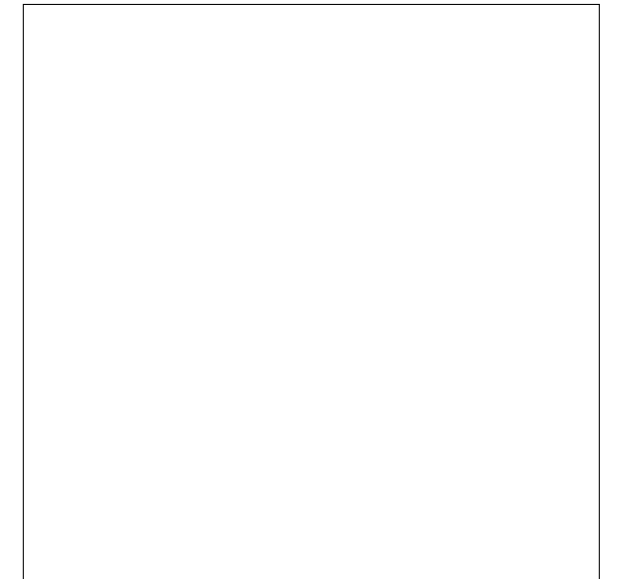


EXISTING - NW



PROPOSED - NW



reserved for City of Portland electronic stamp

ELEVATIONS - NW

SCALE: 1/4" = 1'-0"



**PEOPLE'S UNITED BANK
465-467 CONGRESS ST.**

**ALTERATIONS:
DRIVE-UP SERVICES**

BY:
RC THEBERGE GC, INC.
41-2 GREENWOOD ROAD
BRUNSWICK, ME 04011
BOB@RCTHEBERGE.COM

FOR:
JACK GOGLIN,
DIRECTOR OF FACILITIES
PEOPLE'S UNITED BANK
45 FEDERAL STREET
GREENFIELD, MA 01301

A4.201