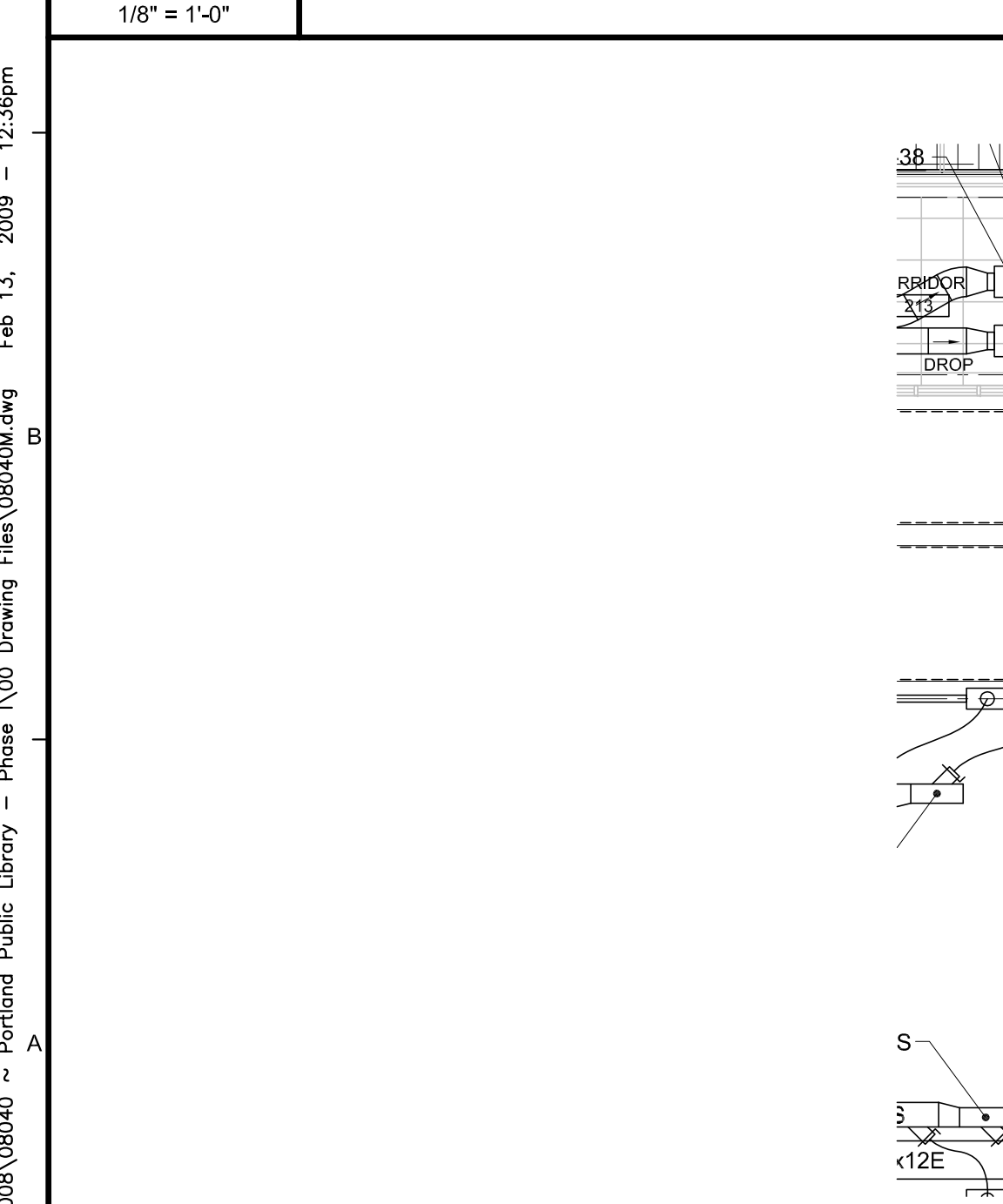


- KEYED NOTES:**
- ① 3/4" HWS & R UP TO FINITUBE ABOVE.
 - ② 3/4" UP TO FINITUBE ABOVE. 3/4" DOWN EXPOSED ALONG WALL TO FINITUBE BELOW.
 - ③ 3/4" DOWN EXPOSED ALONG WALL TO FINITUBE BELOW.
 - ④ 3/4" DOWN IN CHASE TO FINITUBE BELOW.
 - ⑤ 3/4" DOWN EXPOSED FROM FINITUBE ENCLOSURE, THRU FLOOR TO CEILING SPACE BELOW.
 - ⑥ CONNECT HYDRONIC PERIMETER HEATING TO (E)LOCAL TEMPERATURE CONTROL ZONE.

C1 MECHANICAL PIPING PLAN - LEVEL 2
1/8" = 1'-0"



A1 MECHANICAL PART PLAN - LEVEL 2
1/8" = 1'-0"

Allied Engineering
Structural Mechanical Electrical Commissioning
160 Veranda Street
Portland, Maine 04103
T: 307.221.2208
F: 307.221.2266
Web: www.allied-eng.com

Allied Project No: 08040 Cad File: 08040M.DWG Checked By: IAM



 75 York Street Portland, Maine 04101 Tel: 207 772 4656 Fax: 207 828 4656 web: www.ssimonsarchitects.com	PROJECT Portland Public Library Renovation PORTLAND, ME
	TITLE MECHANICAL PIPING PLAN ~ LEVEL 2
	STATUS: Issued for Bidding DATE: 02-13-2009 SCALE: As Noted PROJECT NO.: 2008-0030 DRAWN BY: REW DWG NO.: MP-102

I:\Projects\2008\08040 - Portland Public Library - Phase 1\08 Drawing Files\08040M.dwg Feb 13, 2009 12:36pm