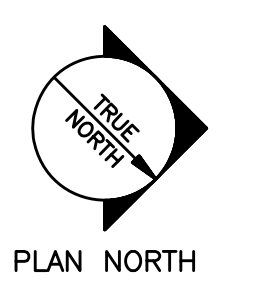
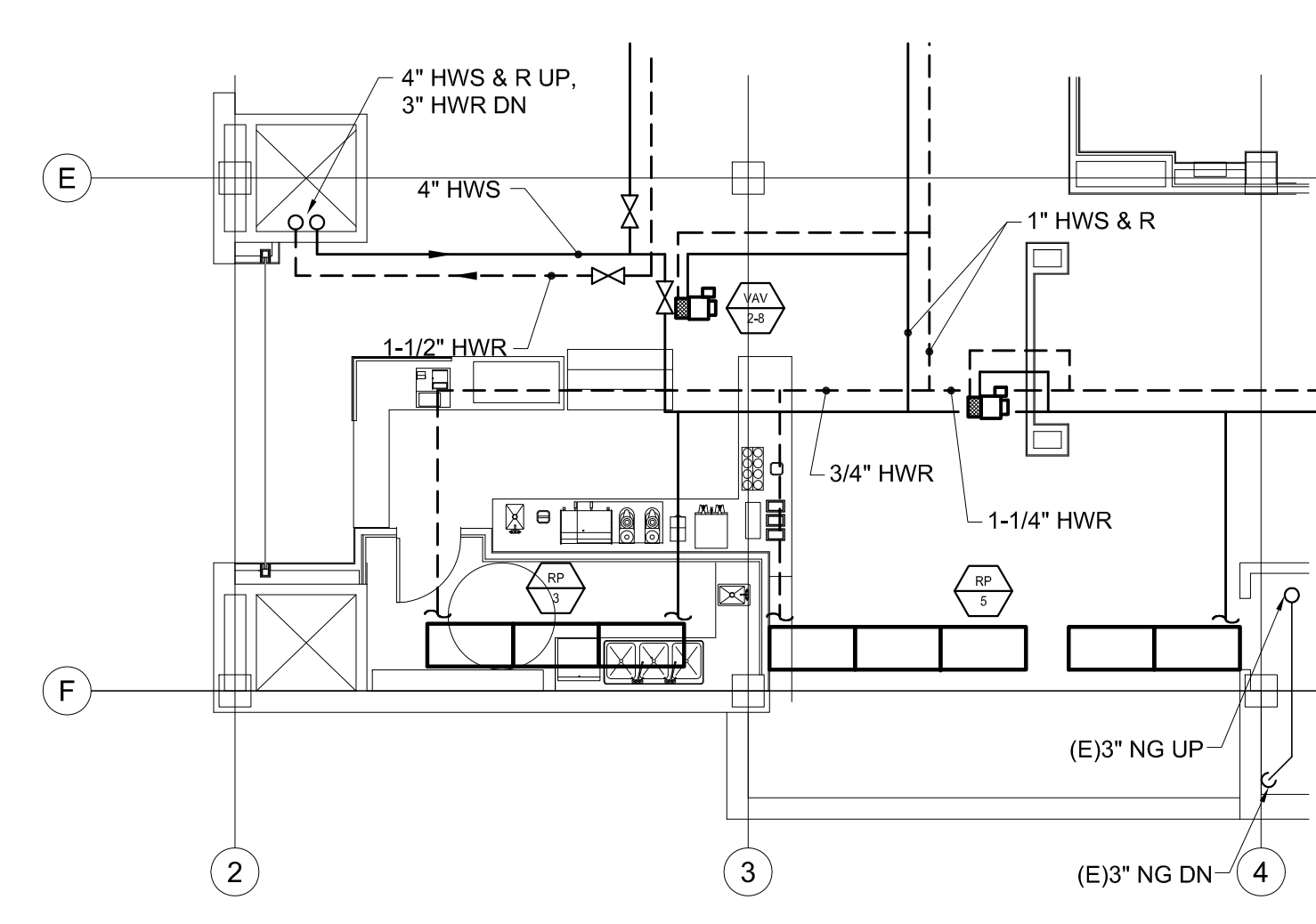


- KEYED NOTES:**
- 1 3/4" HWS & R UP TO FINITUBE ABOVE.
 - 2 3/4" UP TO FINITUBE ABOVE. 3/4" DOWN EXPOSED ALONG WALL TO FINITUBE BELOW.
 - 3 3/4" DOWN EXPOSED ALONG WALL TO FINITUBE BELOW.
 - 4 3/4" DOWN IN CHASE TO FINITUBE BELOW.
 - 5 3/4" DOWN EXPOSED FROM FINITUBE ENCLOSURE, THRU FLOOR TO CEILING SPACE BELOW.



C1 MECHANICAL PIPING PLAN - MAIN LEVEL
1/8" = 1'-0"



A1 MECHANICAL PIPING PART PLAN - MAIN LEVEL - ALTERNATE No. 1
1/8" = 1'-0"



Scott Simons Architects
75 York Street
Portland, Maine 04101
Tel: 207.772.4656
Fax: 207.828.4656
Web: www.simonsarchitects.com

PROJECT
Portland Public Library Renovation
PORTLAND, ME

TITLE
MECHANICAL PIPING PLAN ~ MAIN LEVEL

THIS DRAWING IS THE PROPERTY OF SCOTT SIMONS ARCHITECTS AND IS NOT TO BE COPIED OR REPRODUCED IN PART OR WHOLE.



STATUS:
Issued for Bidding

DATE: 02-13-2009
SCALE: As Noted
PROJECT NO. 2008-0030
DRAWN BY: REW
DWG NO. **MP-101**

Allied Engineering
Structural Mechanical Electrical Commissioning
160 Veranda Street
Portland, Maine 04103
Tel: 307.221.2268
Fax: 307.221.2266
Web: www.allied-eng.com

Allied Project No: 08040 Cad File: 08040M.DWG Checked By: IAM

I:\Projects\2008\08040 - Portland Public Library - Phase 1\08 Drawing Files\08040M.dwg Feb 13, 2009 - 12:35pm