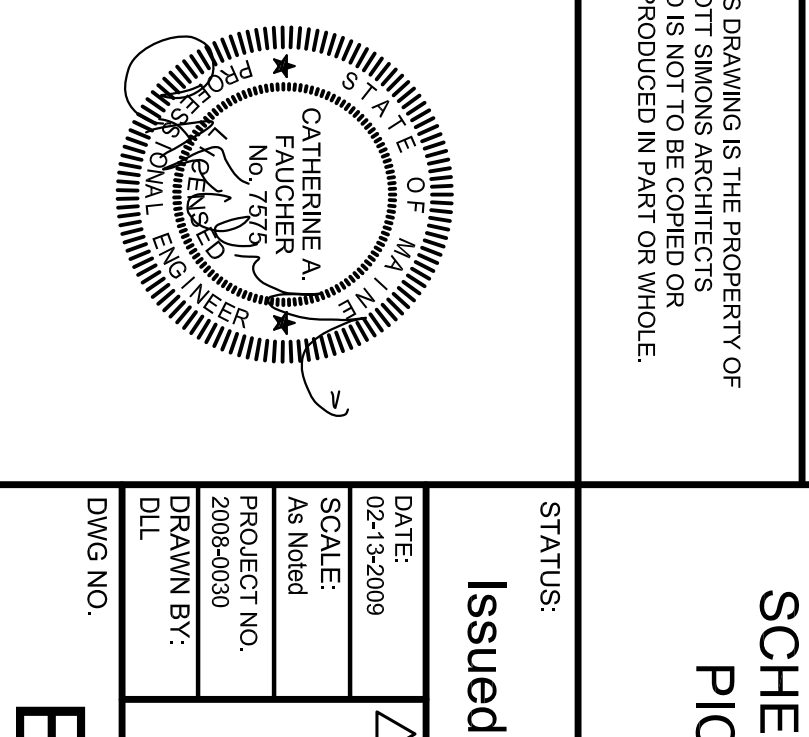
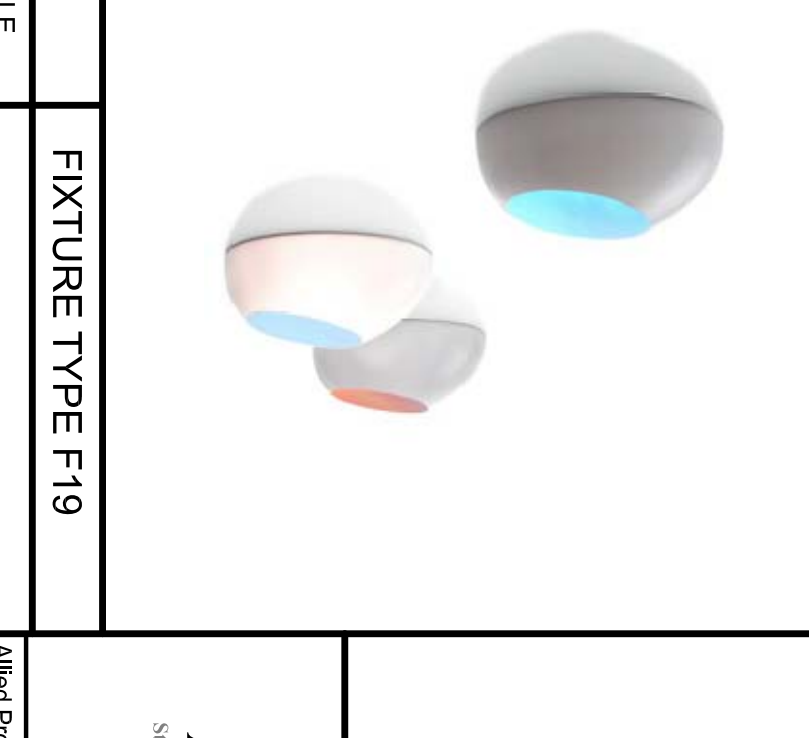
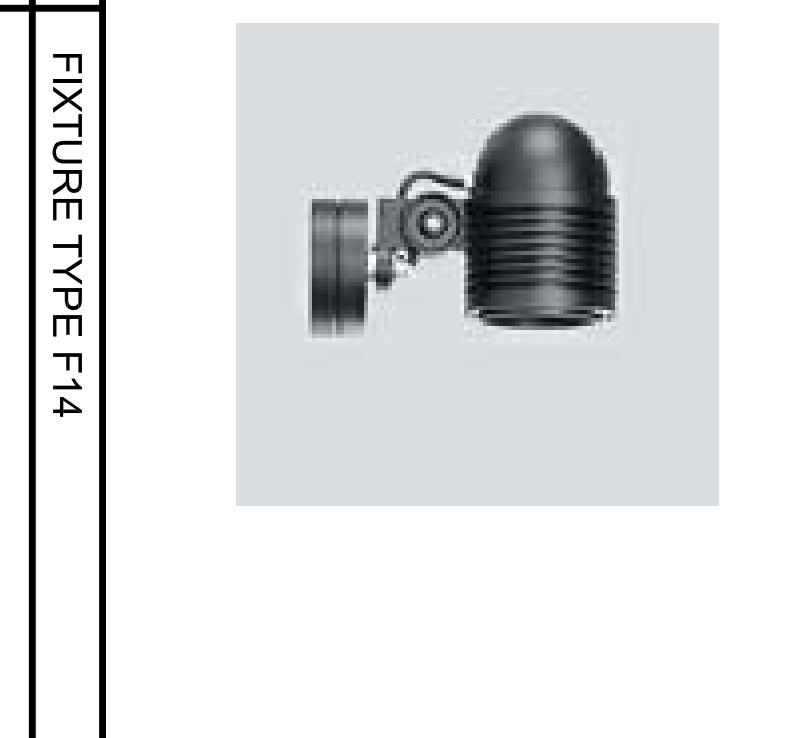
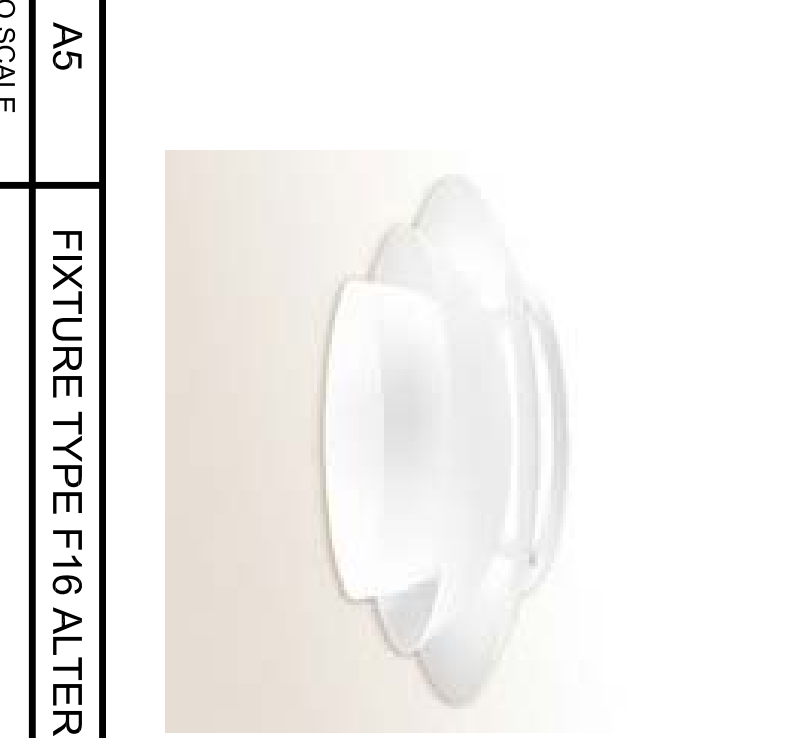
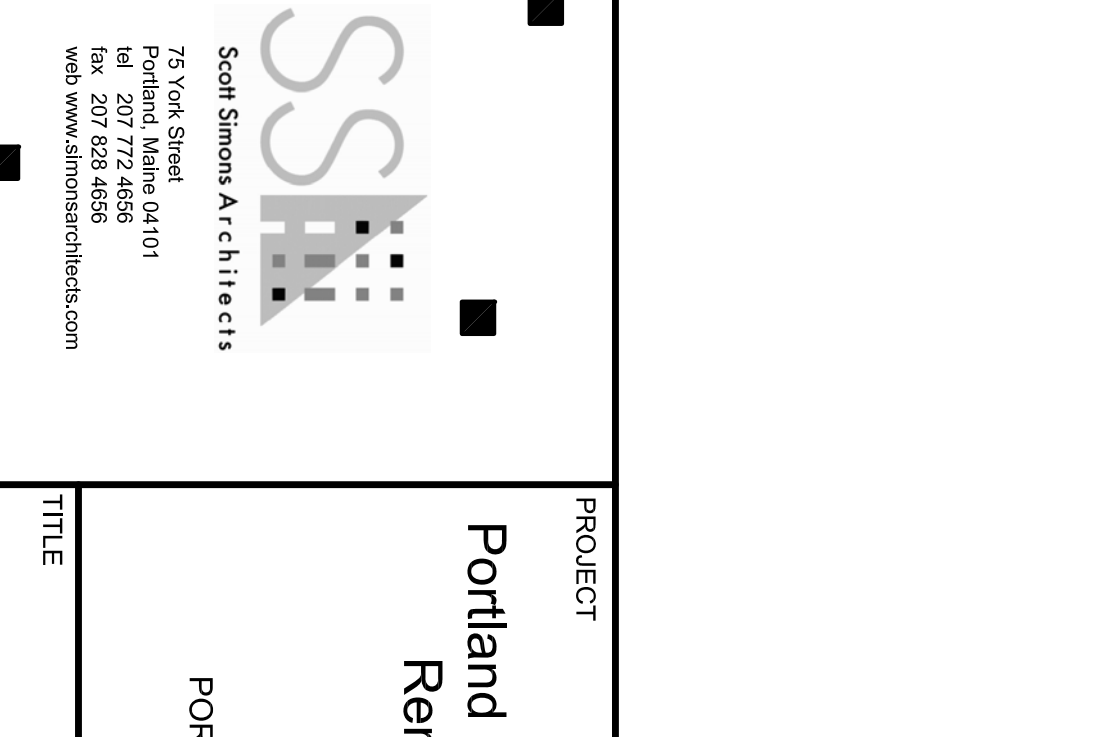
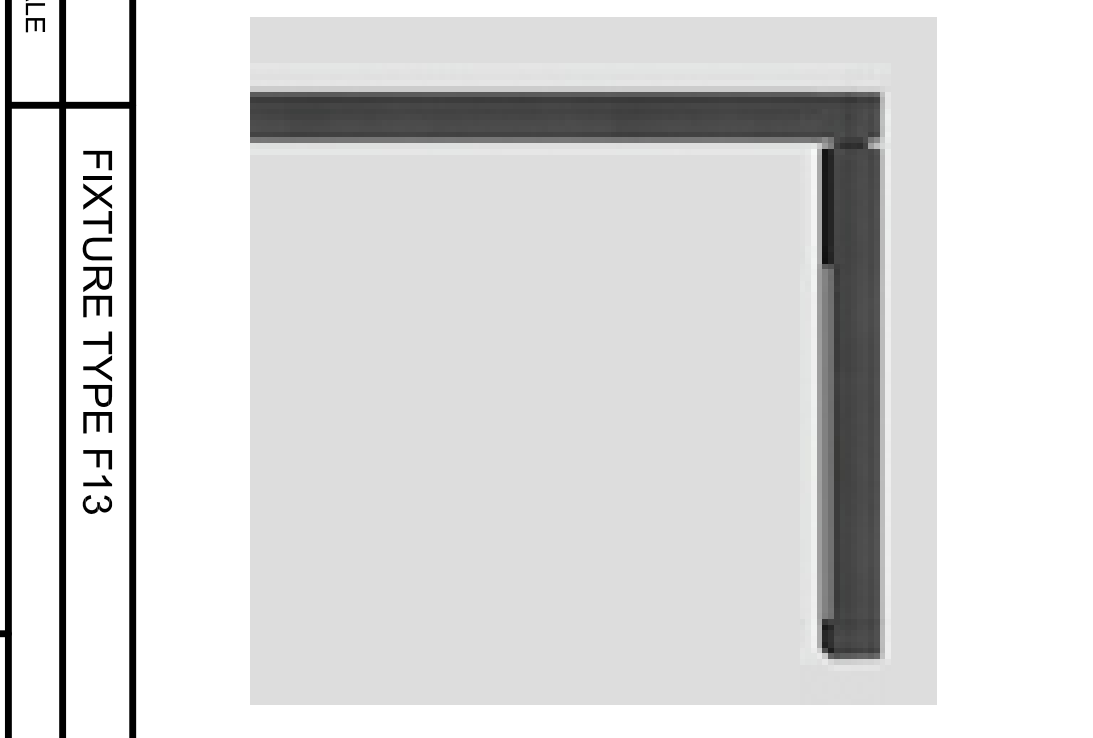
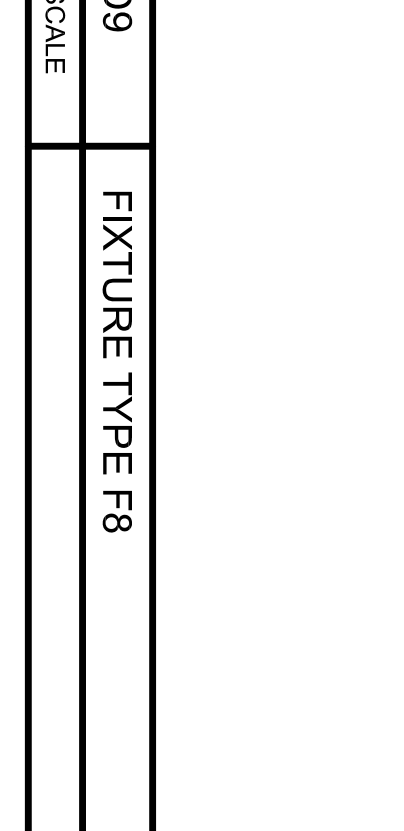
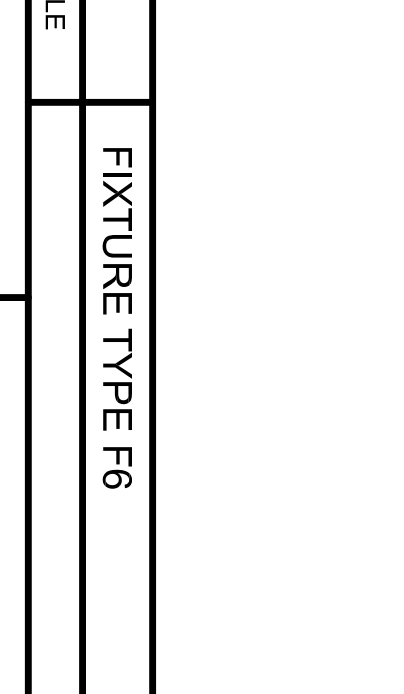
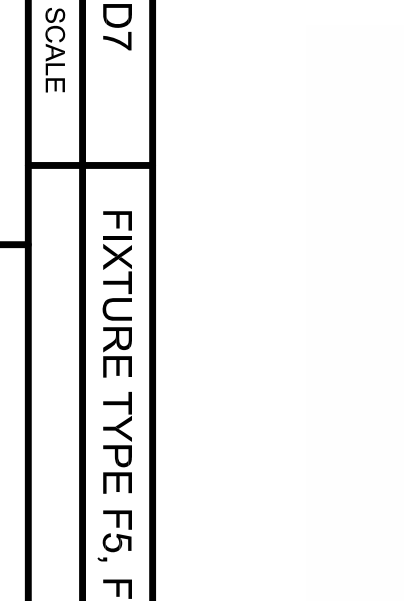
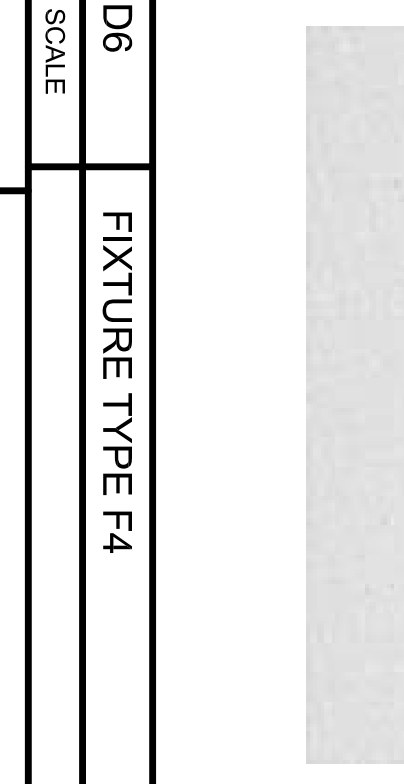
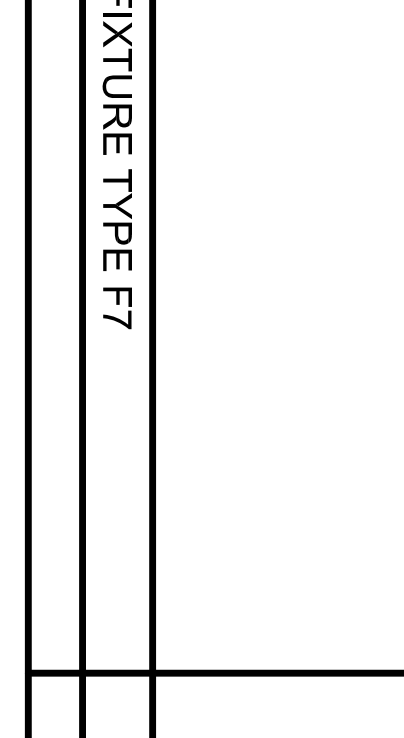
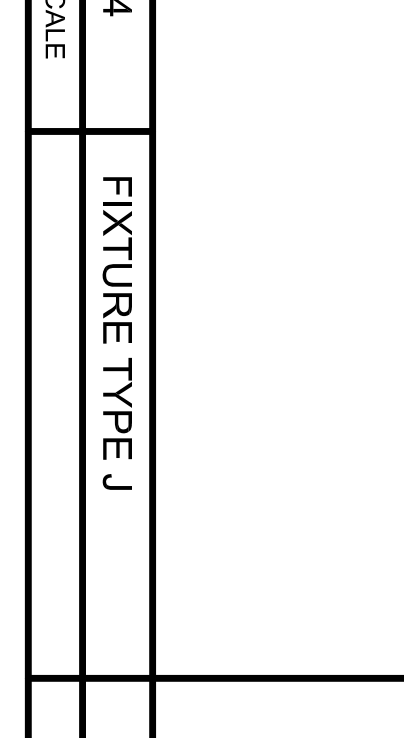
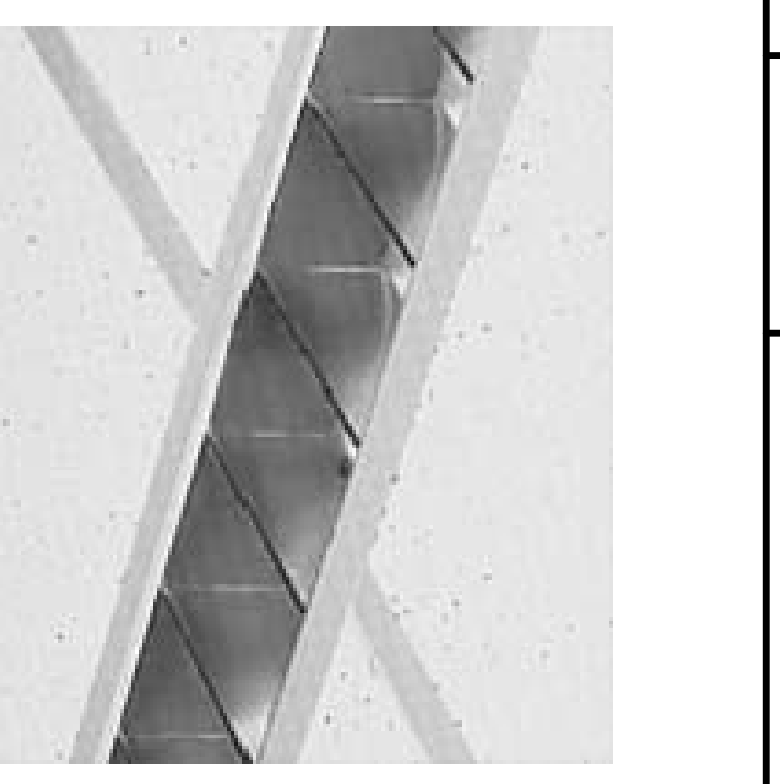
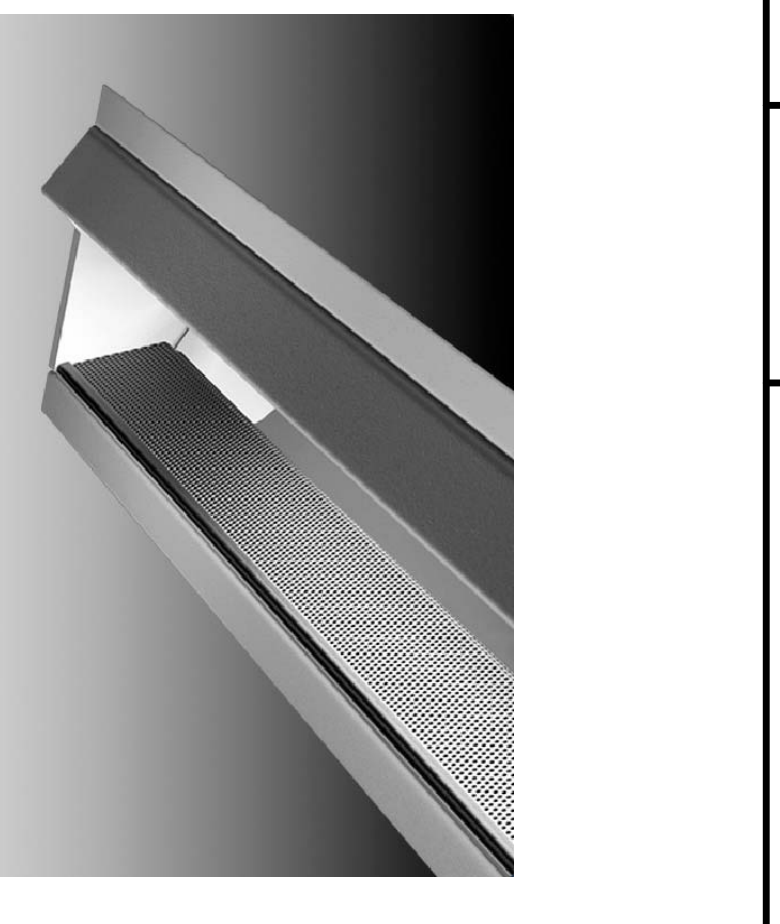
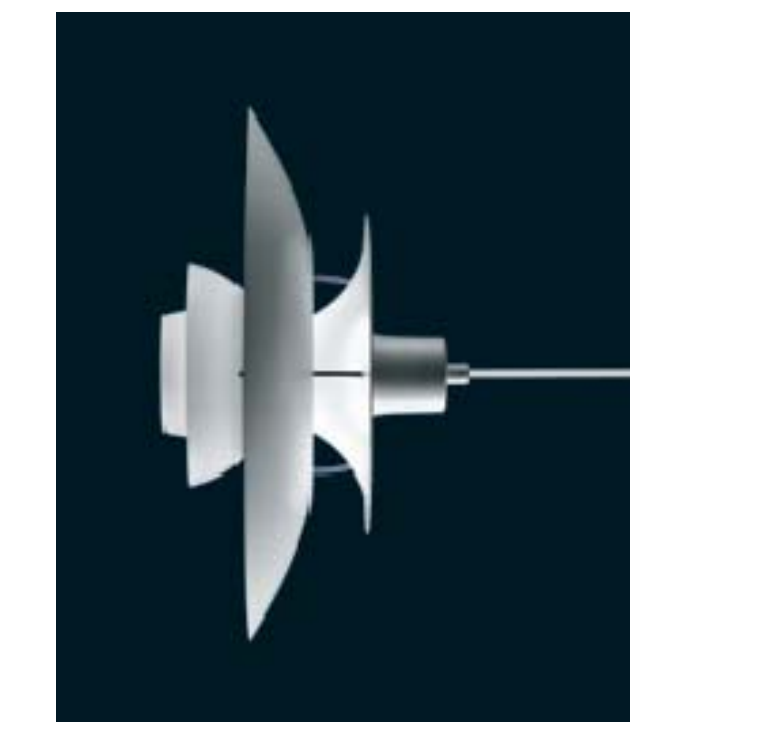
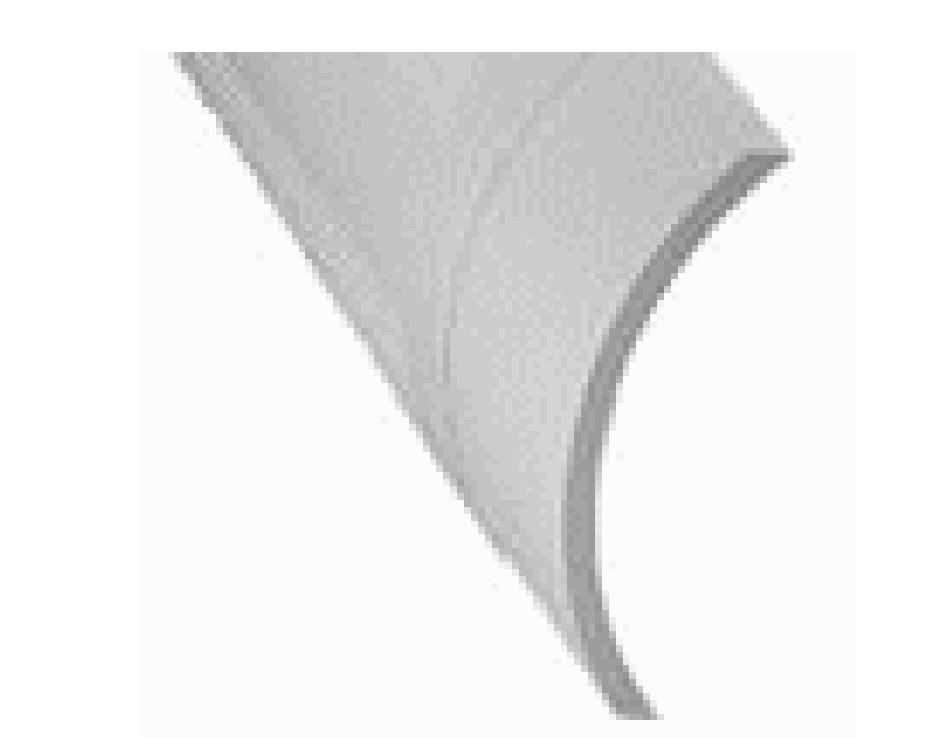
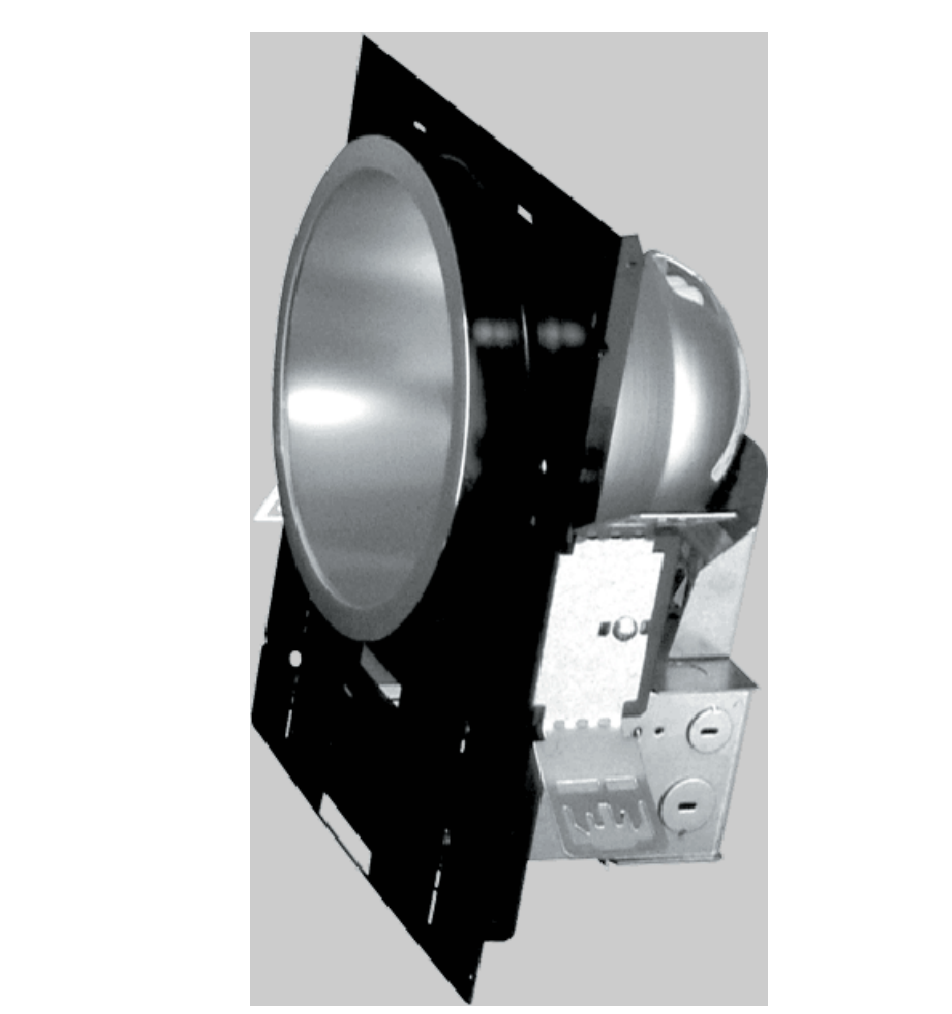
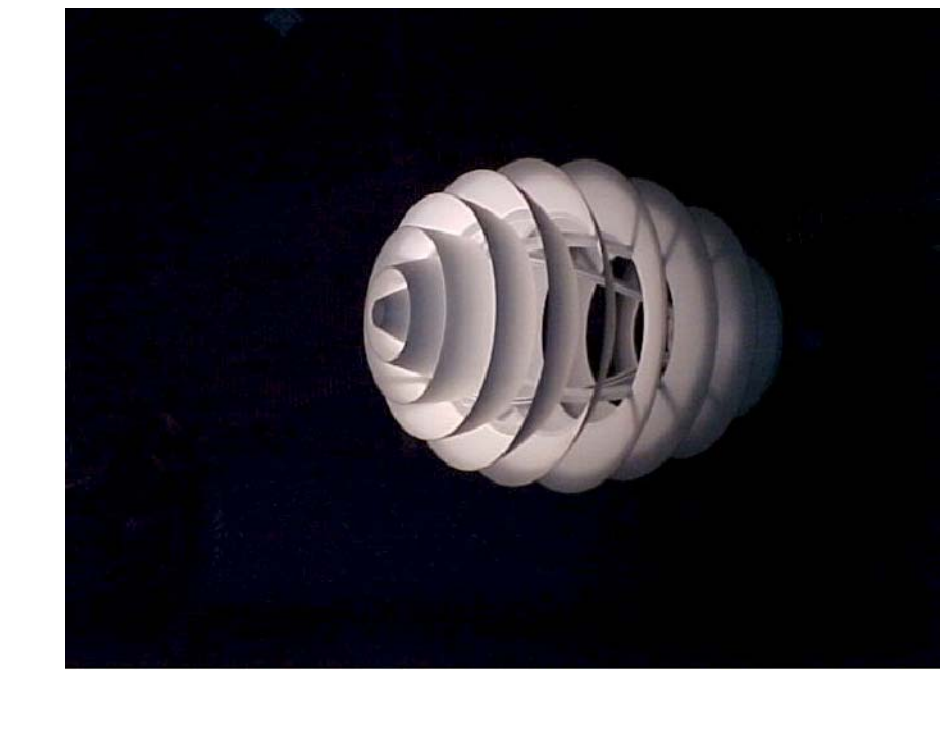
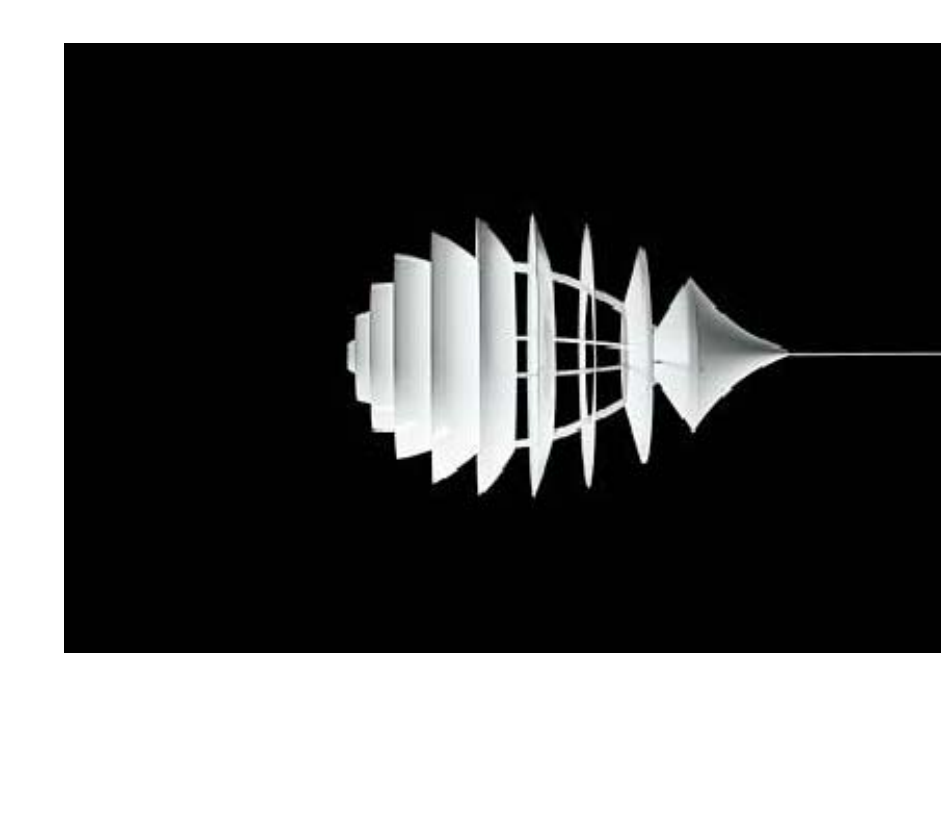


TYPE	DESCRIPTION	MFR	CATALOG SERIES NUMBERS - SEE NOTE 1	MOUNTING	VOLTS	QTY	TOTAL WATTS	LAMP TYPE	KEY NOTES
A	EXTERIOR LINEAR RGB LED	INSIGHT	TE1-RGB-100-SUB-6-TBL-DC-DIMX	SURFACE	277	11W FT	66	LEDS	5.6
B	DECORATIVE LARGE PENDANT	LOUIS POLLESEN	UPC-1250444277A/WH	PENDANT	277	1	312	250W MH	3.13
B	DECORATIVE LARGE PENDANT	WINONA	ARTPOCKE	PENDANT	277	1	312	250W MH	2.3, 3
C	1" PENDANT WITH RING A DIE CAST ALMS	LUVO	4116-128 VMD	PENDANT	277	1	28	CF75W T8T 3K	3
D	6" LINEAR REGR DOWNLIGHT	PRESCOTT	CFR818LST828A-CL-XX	RECESSED	120/277	2	50	CF18W QUAD 3K	6.15
E	6" LINEAR REGR DOWNLIGHT	PRESCOTT	512-8-275-DC-91W-277-AC18-4E	PENDANT	277	4	152	FS2W T5 3K	6.15
EA	6" LINEAR REGR INDIRECT	FINELITE	512-8-275-DC-91W-277-AC18-4E	PENDANT	277	2	66	FS2W T5 3K	15
E1	6" LINEAR REGR DIRECT/INDIRECT	FINELITE	512-DV03-8-1TB-DC-91W-CCO277FAFE	PENDANT	277	2	66	FS2W T5 3K	6.15
E1A	4" LINEAR REGR DIRECT/INDIRECT	FINELITE	512-DV03-4-1TB-DC-91W-CCO277FAFE	PENDANT	277	1	33	FS2W T5 3K	6.15
G	DECORATIVE REGRM PENDANT	LUVO	4124-180	PENDANT	120	1	18	CF75W G244	
G	20" DIAMETER DECORATIVE PENDANT	LOUIS POLLESEN	PH5-123120/WH	PENDANT	120	1	23	CF20W GU	2.3
H	12" DECORATIVE PENDANT	FOCAL POINT	FGR-GW-1-327T-S277-C144-LR25-NA	PENDANT	277	1	36	CF25W T8T 3K	
J	4 RECESSED OUDO CANPODE	CANPODE LIGHTING SYSTEM	CLS-S-38TC-120	RECESSED	120	20W FT	-	CANPODE	8
K	TRACK LIGHTING	HALO	TRACR 4E84P HEAD 4L198W48L198W48	TRACK	120	XX	100	100W PAR38	6.7
K1	TRACK LIGHTING AND HEAD WITH BARE HEAD	LBL LIGHTING	TRACR 4E84P HEAD 4L198W48L198W48 5P-1A-50W/HL	TRACK	120	1	50	50W MR16	6.7, 11

GENERAL LUMINAIRE SCHEDULE									
F1A	24" SPEC GRADE THOPER	LIPOVNA	25P9-G-32-A18AMVOLT119-GERBWS	RECESSED	277	3	96	FS2W T8 3K	
F2	NONMETALLIC COMPACT FLOURESCENT VIBROPHOROP	CANLET	68-02-FC-12-277V-03-08	CEILING	277	1	25	CF18W QUAD 3K	
F3	4 GENERAL PURPOSE STRIP	LIPOVNA	C2-32-20VOLT12GERBWS-XWVGCAN-C5R4R4WH	CEILING	277	2	62	FS2W T8 3K	
F4	4 RECESSED LINEAR COVE	LIPOVNA	TRISNA1C-2-32-15-2-DMVOLT12GERB10	WALL	277	2	62	FS2W T8 3K	8
F5	6" FLOURESCENT DOWNLIGHT	LITON	HOUSING ALPHA-82E-27 REFLECTOR	RECESSED	277	1	36	CF25W T8T 3K	
F5A	5" CONTACT FLOURESCENT DOWNLIGHT	LEUCOS	VANZ	RECESSED	120	1	20	CF18W QUAD 3K	14
F6	24" QUADRATIC RECESSED	LIPOVNA	2R15-2875-40VOLT12GERBWS-PM82P	RECESSED	277	2	60	FS2W T5 3K	
F7	4" LINEAR RECESSED UP/LIGHT	FOCAL POINT	FAYAN8-1TBHO-1C277S-F-LR5-75-4	RECESSED/WALL	277	1	62	FS2W T5HO	
F8	4" LINEAR FLOURESCENT	AMERICAN FLOURESCENT	CE1232P/88	WALL	277	2	62	FS2W T8 3K	
F9	DECORATIVE PENDANT	LUVO	FR03R-1FS-STD-02A-5TD	SUSPENDED	120	1	75	FS2W HALOGEN	
F10	INDIRECT/CONTACT FLOURESCENT	LUVO	F275-228-3TD-84-1W-12	SUSPENDED	277	2	66	FS2W T5 3K	
F11	6" LINEAR FLOURESCENT	PINNACLE	E2A-1T5-5-XFL-LIN-VW	RECESSED	277	2	66	FS2W T5 3K	8
F11A	4" LINEAR FLOURESCENT	PINNACLE	E2A-1T5-4-XFL-LIN-VW	RECESSED	277	1	33	FS2W T5 3K	6
F12	6" LINEAR WALLWASHER	PINNACLE	E1T-1T5-6-4E-LIN-VW	RECESSED	277	2	66	FS2W T5 3K	8
F12	COMPACT LINEAR FLOURESCENT	BARTCO LIGHTING	BAM00-TFS-14W	SURFACE	277	1	14	FS2W T5 3K	9, 10
F13	FLOURESCENT POLE FIXTURE	BEGA	8877 P - 88C	9' POLE	277	1	55	FS5W TWIN 3K	16
F14	HALOGEN WIND SPOT	BEGA	7515 - 312313/WHTE	WALL	120	1	50	50W T4 HALOGEN	
F15	LOW VOLTAGE LANSQAPRE LIGHTING	WNSQAPRE	AS-69-1V-L-3K-S-F5-SH4C2	IN GROUND	120	1	50	50W MR16	11, 12
F16	LOW PROFILE CEILING FIXTURE	LUVO	5124-1180	RECESSED	120	1	18	CF18W G244	
F16	QUADRANT SERIES REAR RECESSED PENDANT	VISA	CM1712-TR39-PD-VHTE	RECESSED	277	2	69	CF25W T8T 3K	2
F17	DECORATIVE WALL MOUNTED EMERGENCY FIXTURE	LIPOVNA	W52-42TR1MD-277-ELDY-DW-TL-UP	SURFACE	277	1	46	CF40W T8T 3K	
F18	6" FLOURESCENT DOWNLIGHT ON SWIBER	GOHAM	AF-240TR1-048-AVOLT	RECESSED	277	2	46	CF40W T8T 3K	
F19	DECORATIVE SPOKE WITH FLAMELESS	LUCE PLAN	DS2-F-EL	WALL	277	1	28	CF25W T8T 3K	
F20	WET LOCATION DOWNLIGHT	GOHAM	LD1-120TR1-F8W-FL-AVOLT-ELR	RECESSED	277	1	28	CF25W T8T 3K	
X1	LED SELF POWERED EXIT SIGN EDGE LIT SIGN	LIPOVNA	UPP-112-8MR-120277	SEE DRAWINGS	120	-	-	LED	
X2	LED SELF POWERED COMBINATION EXIT SIGN	LIPOVNA	UPH101-S-V-3-R-N	SEE DRAWINGS	120	2	11	LED/EXCENON	

- NOTES:
1. NOTE THAT THESE NUMBERS ARE NOT COMPLETE CATALOG #S. PROVIDE ALL REQUIREMENTS ON SCHEDULE NOTES, SPECS, AND DRAWINGS COMBINED.
 2. PROVIDE UNDER ALTERNATE #3
 3. VERIFY MOUNTING HEIGHTS WITH ARCHITECTURAL PLANS AND SECTIONS AND VERIFY CEILING STRUCTURES FOR ALL LIGHTING FIXTURES.
 4. VERIFY ALL FINISHES WITH ARCHITECT PRIOR TO ORDERING LIGHTING FIXTURES.
 5. PROVIDE ALL ACCESSORIES, DRIVERS, AND MOUNTING EQUIPMENT REQUIRED FOR PROPER INSTALLATION.
 6. FOLLOW ALL LOCAL AND STATE ELECTRICAL CODES AND REGULATIONS FOR PROPER INSTALLATION OF TRACK LIGHTING.
 7. PROVIDE PROGRAMMED START BALLAST TO AN OCCUPANCY SENSOR.
 8. PROVIDE PROGRAMMED START BALLAST WITH ALL LIGHTS THAT ARE CONNECTED TO AN OCCUPANCY SENSOR.
 9. MOUNT FIXTURE TO DESK. VERIFY LOCATION OF LIGHT FIXTURE WITH ARCHITECT PRIOR TO ROUGH-IN.
 10. WIRE FIXTURE THRU UNDERCOUNTER OCCUPANCY SENSOR WATTS/OPER SOLE MPD-3550
 11. PROVIDE USHO TITAN SERIES MR16 LAMPS 18,000 HOUR
 12. PROVIDE ALL MOUNTING HARDWARE FOR PROPER INSTALLATION OF LANSQAPRE LIGHTING. IE: TRANSFORMER, MOUNTING HARDWARE.
 13. PROVIDE HOLLOW BALLAST AND LAMP FOR FIXTURE. FIXTURE IS TO BE WIRED WITH FLOW OPERATION. REFER TO MANUFACTURERS WIRING DIAGRAM FOR CORRECT
 14. PROVIDE DIMMING BALLAST FOR FIXTURES. LUMINOR HL-LIME
 15. PROVIDE 50% STEP DIMMING BALLASTS
 16. PROVIDE AN 9' POLE FOR FIXTURE.



PROJECT: Portland Public Library Renovation, PORTLAND, ME

STATUS: Issued for Bidding

DATE: 02/26/2009

PROJECT NO: 2008-0009

DRAWING BY: [Signature]

DWG NO: EL-102

2008 © Scott Stevens Architects

75 York Street, Portland, Maine 04101
 Phone: 603.682.4444
 Fax: 603.682.4444
 Web: www.ssaarchitects.com

SSA ARCHITECTS

160 Verona Street, Portland, Maine 04103
 Phone: 603.682.4444
 Fax: 603.682.4444
 Web: www.ssaarchitects.com

ALLIED ENGINEERING
 160 Verona Street, Portland, Maine 04103
 Phone: 603.682.4444
 Fax: 603.682.4444
 Web: www.allied-engineering.com

THIS DRAWING IS THE PROPERTY OF AND IS NOT TO BE COPIED OR REPRODUCED IN PART OR WHOLE.