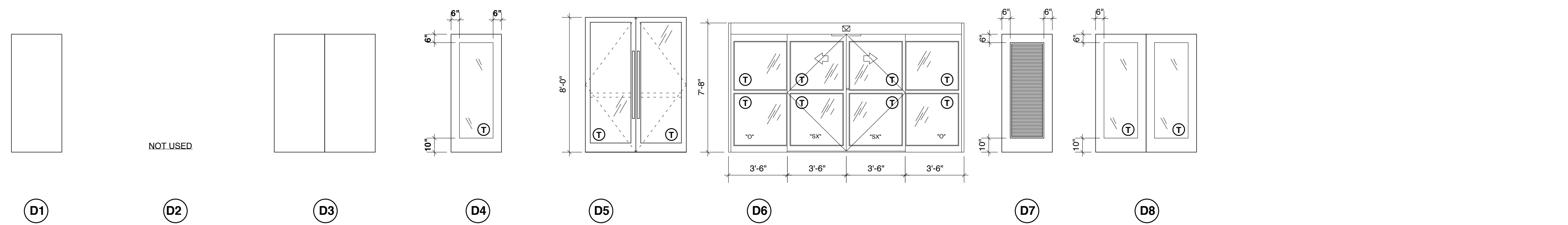
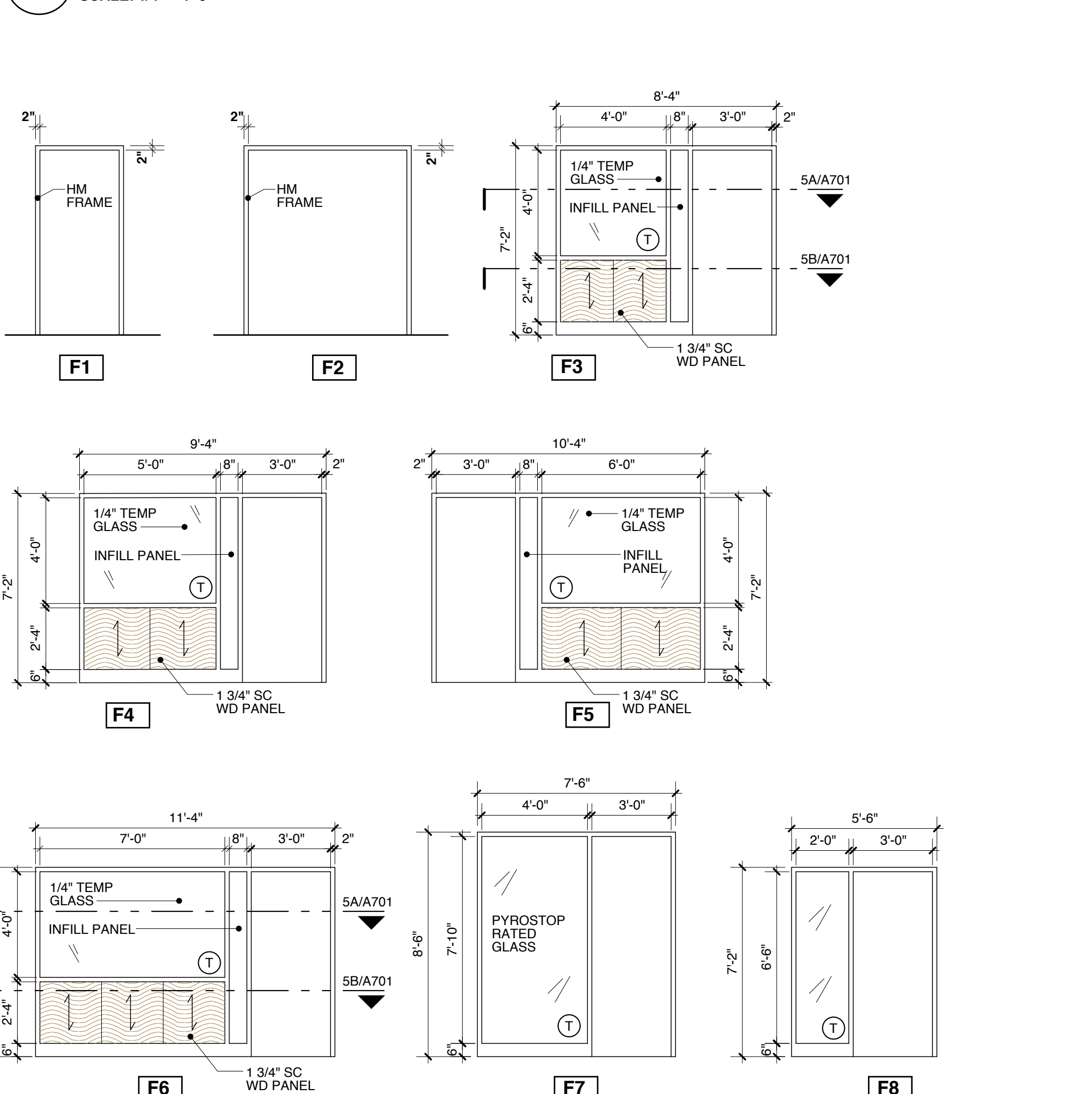


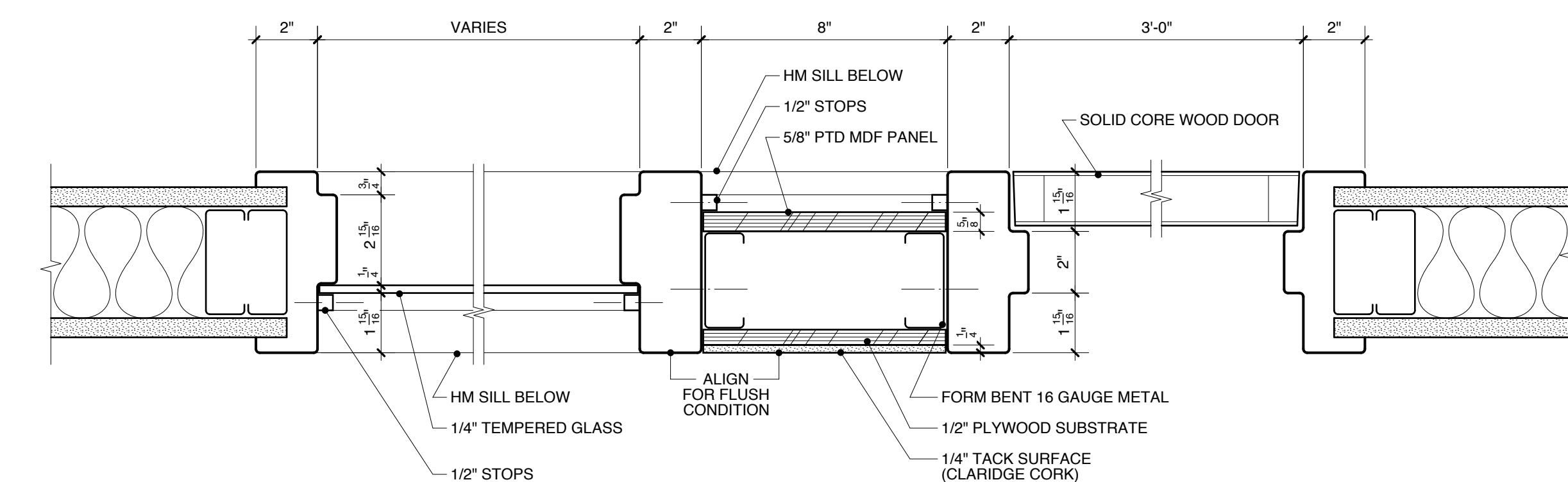
DOOR SCHEDULE															
Door No.	Location	Type	Door Width	Height	Thick	Material	Elev.	Frame Material	Elev.	Jamb	Sill	Throat Width	Hardware	Fire Label	Remarks
LOWER FLOOR															
L01A	001A	FLUSH SOLID CORE WOOD	3'-0"	7'-0"	1 3/4"	SC WOOD	D1	HM	F1	J8		6 7/8"	HW #7		
L01B	001B	FLUSH SOLID CORE WOOD	3'-0"	7'-0"	1 3/4"	SC WOOD	D1	HM	F1	J1		4 7/8"	HW #7		
L02	002	FLUSH SOLID CORE WOOD	3'-0"	7'-0"	1 3/4"	SC WOOD	D1	HM	F1	J8		6 7/8"	HW #4	45 MIN	
L03	003	FLUSH SOLID CORE WOOD	3'-0"	7'-0"	1 3/4"	SC WOOD	D1	HM	F1	J1		4 7/8"	HW #7		
L04	004	FLUSH SOLID CORE WOOD	3'-0"	7'-0"	1 3/4"	SC WOOD	D1	HM	F1	J8		5 1/2"	HW #7		
L06	006	1/2" TEMPERED FRAMELESS GLASS	3'-0"	9'-0"	1/2"	GLASS	GE1	GLASS	GE1						
L07	007	1/2" TEMPERED FRAMELESS GLASS	3'-0"	8'-6"	1/2"	GLASS	GE2	GLASS	GE2						
L09	009	PAIRED FLUSH SOLID CORE WOOD	6'-0"	8'-0"	1 3/4"	SC WOOD	D8	HM	F2	J1		4 7/8"	HW #12		ALARMED
L11	011	1/2" TEMPERED FRAMELESS GLASS	3'-0"	9'-0"	1/2"	GLASS	GE3	GLASS	GE3						
L12	012	1/2" TEMPERED FRAMELESS GLASS	3'-0"	9'-0"	1/2"	GLASS	GE3	GLASS	GE3						
L12A	012A	PAIRED FLUSH SOLID CORE WOOD	6'-0"	7'-0"	1 3/4"	SC WOOD	D1	HM	F1	J1		4 7/8"	HW #7		
L13	013	1/2" TEMPERED FRAMELESS GLASS	3'-0"	7'-0"	1 3/4"	SC WOOD	D1	HM	F1	J1		4 7/8"	HW #7		
L13A	013A	FLUSH SOLID CORE WOOD	3'-0"	6'-8"	1 3/4"	SC WOOD	D1	HM	F1	J1		4 7/8"	HW #7		
L14	014	FLUSH SOLID CORE WOOD	3'-0"	7'-0"	1 3/4"	SC WOOD	D1	HM	F1	J1			HW #10	45 MIN	
L15A	015A	PAIRED FLUSH SOLID CORE WOOD	6'-0"	8'-10"	1 3/4"	SC WOOD	D3	HM	F2	J2		6 1/4"	HW #11		
L15B	015B	PAIRED FLUSH SOLID CORE WOOD	6'-0"	8'-10"	1 3/4"	SC WOOD	D3	HM	F2	J2		6 1/4"	HW #11		
L17	017	FLUSH SOLID CORE WOOD	3'-0"	7'-0"	1 3/4"	SC WOOD	D1	HM	F1	J2		6 1/4"	HW #7		
L18	018	PAIRED FLUSH SOLID CORE WOOD	6'-0"	7'-0"	1 3/4"	SC WOOD	D3	HM	F2	J1		4 7/8"	HW #8		
L18A	018A	PAIRED FLUSH SOLID CORE WOOD	6'-0"	7'-0"	1 3/4"	SC WOOD	D3	HM	F2	J1		4 7/8"	HW #8		
L18B	018B	FLUSH SOLID CORE WOOD	3'-0"	7'-0"	1 3/4"	SC WOOD	D1	HM	F1	J4		7 1/4"	HW #7		
L18C	018C	FLUSH SOLID CORE WOOD	3'-0"	7'-0"	1 3/4"	SC WOOD	D1	HM	F1	J2		6 1/4"	HW #9		
L18D	018D	FLUSH SOLID CORE WOOD	3'-0"	7'-0"	1 3/4"	SC WOOD	D1	HM	F1	J2		6 1/4"	HW #9		
L21	021	PAIRED FLUSH SOLID CORE WOOD	6'-0"	7'-0"	1 3/4"	SC WOOD	D3	HM	F2	J1		4 7/8"	HW #8		
L23	023	FLUSH SOLID CORE WOOD	3'-0"	7'-0"	1 3/4"	SC WOOD	D1	HM	F1	J1		4 7/8"	HW #7		
L24		REPLACE DOOR SLAB	-	-	1 3/4"	LOUVERED WD	D7	EXIST				4 1/2"	REUSE EXIST		SIZE TO EXISTING FRAME
L25		REPLACE DOOR SLAB	-	-	1 3/4"	LOUVERED WD	D7	EXIST				4 1/2"	REUSE EXIST		SIZE TO EXISTING FRAME
L45	045	ALUMINUM ENTRY DOOR	3'-0"	6'-10 3/4"	1 3/4"	ALUMGLASS	W21	ALUM	W21			4 1/2"	HW #2		SEE SHEET A703
MAIN FLOOR															
101A	101	ALUMINUM AUTO SLIDING	14'-0"	7'-8"		ALUMGLASS	D6	ALUM.	W8			4 / A102	HW #13		SEE SHEET A703
101B	101	ALUMINUM AUTO SLIDING	14'-0"	7'-8"		ALUMGLASS	D6	ALUM.	W8			4 / A102	HW #13		SEE SHEET A703
102	102	STEEL EXTERIOR DOOR	3'-0"	7'-0"	1 3/4"	GALV. STEEL	D1	GALV. STL	F1	J5		4 7/8"	HW #7		DOOR IN EXT. MASONRY WALL
103	103	FLUSH SOLID CORE WOOD	3'-0"	7'-0"	1 3/4"	SC WOOD	D1	HM	F1	J9		5 1/2"	HW #7		
107A	107	ALUMINUM ENTRY	6'-0"	8'-0"	1 3/4"	ALUMGLASS	D5	ALUM.	W3			7 1/2"	HW #1		SEE SHEET A703
107B	107	ALUMINUM ENTRY	6'-0"	8'-0"	1 3/4"	ALUMGLASS	D5	ALUM.	W3			7 1/2"	HW #2		SEE SHEET A703
108	108A	FLUSH SOLID CORE WOOD	3'-0"	7'-0"	1 3/4"	SC WOOD	D1	HM	F1	J2		6 1/4"	HW #14		ADD ALTERNATE #1 CAFE
110	110	FLUSH SOLID CORE WOOD	3'-0"	7'-0"	1 3/4"	SC WOOD	D1	HM	F1	J1		4 7/8"	HW #4		
117A	117A	FLUSH SOLID CORE WOOD	3'-0"	7'-0"	1 3/4"	SC WOOD	D1	HM	F1	J1		4 7/8"	HW #7		
119	119	1/2" TEMPERED FRAMELESS GLASS	3'-0"	8'-0"	1/2"	GLASS	GE5	GLASS	GE5						
120	120	1/2" TEMPERED FRAMELESS GLASS	3'-0"	8'-0"	1/2"	GLASS	GE5	GLASS	GE5						
126	126	FLUSH SOLID CORE WOOD	3'-0"	7'-0"	1 3/4"	SC WOOD	D1	HM	F1	J1		4 7/8"	HW #6		
133	133	FLUSH SOLID CORE WOOD	3'-0"	7'-0"	1 3/4"	SC WOOD	D1	HM	F1	J1		4 7/8"	HW #7		
135	135	FLUSH SOLID CORE WOOD	3'-0"	7'-0"	1 3/4"	SC WOOD	D1	HM	F1	J2		6 1/4"	HW #5		
136	136	FLUSH SOLID CORE WOOD	3'-0"	7'-0"	1 3/4"	SC WOOD	D1	HM	F1	J2		6 1/4"	HW #5		
137	137	FLUSH SOLID CORE WOOD	3'-0"	7'-0"	1 3/4"	SC WOOD	D1	HM	F1	J1		4 7/8"	HW #4		
139	139	FULL LIGHT GLASS	3'-0"	7'-0"	1 3/4"	WDGLASS	D4	HM	F4	J1		4 7/8"	HW #7		
142	142	FULL LIGHT GLASS	3'-0"	7'-0"	1 3/4"	WDGLASS	D4	HM	F6	J1		4 7/8"	HW #7		
145	145	FLUSH SOLID CORE WOOD	3'-0"	7'-0"	1 3/4"	SC WOOD	D1	HM	F1	J2		6 1/4"	HW #5		
151A	151A	FLUSH SOLID CORE WOOD	3'-0"	7'-0"	1 3/4"	SC WOOD	D1	HM	H1	J1		4 7/8"	HW #7		
152A	152	FULL LIGHT GLASS	3'-0"	7'-0"	1 3/4"	WDGLASS	D4	HM	F4	J1		4 7/8"	HW #7		
152B	152	FLUSH SOLID CORE WOOD	3'-0"	7'-0"	1 3/4"	SC WOOD	D1	HM	F1	J1		4 7/8"	HW #7		
153	153	FLUSH SOLID CORE WOOD	3'-0"	7'-0"	1 3/4"	SC WOOD	D1	HM	F5	J1		4 7/8"	HW #7		
154	154	FLUSH SOLID CORE WOOD	3'-0"	7'-0"	1 3/4"	SC WOOD	D1	HM	F3	J1		4 7/8"	HW #7		
156	156	FLUSH SOLID CORE WOOD	3'-0"	7'-0"	1 3/4"	SC WOOD	D1	HM	F1	J2		6 1/4"	HW #5		
RP1	RAMP1	FULL LIGHT CERAMIC FIRE GLASS	3'-0"	6'-4"	1 3/4"	WD/FIRE GLASS	D4	HM	F7	J7		10 1/2"	HW #10	60 MIN	PYROSTOP RATED GLASS & MAGNETIC HOLD OPEN
ST4B	074	INSULATED FLUSH HM DOOR	3'-0"	8'-0"	1 3/4"	HM	D1	HM	F1	J7		7 1/4"	HW #3		
LEVEL 2															
204	204	FLUSH SOLID CORE WOOD	3'-0"	7'-0"	1 3/4"	SC WOOD	D1	HM	F8	J1		4 7/8"	HW #7		
215A	215	FLUSH SOLID CORE WOOD	3'-0"	7'-0"	1 3/4"	SC WOOD	D1	HM	F3	J1		4 7/8"	HW #7		
215B	215	FLUSH SOLID CORE WOOD	3'-0"	7'-0"	1 3/4"	SC WOOD	D1	HM	F3	J1		4 7/8"	HW #7		



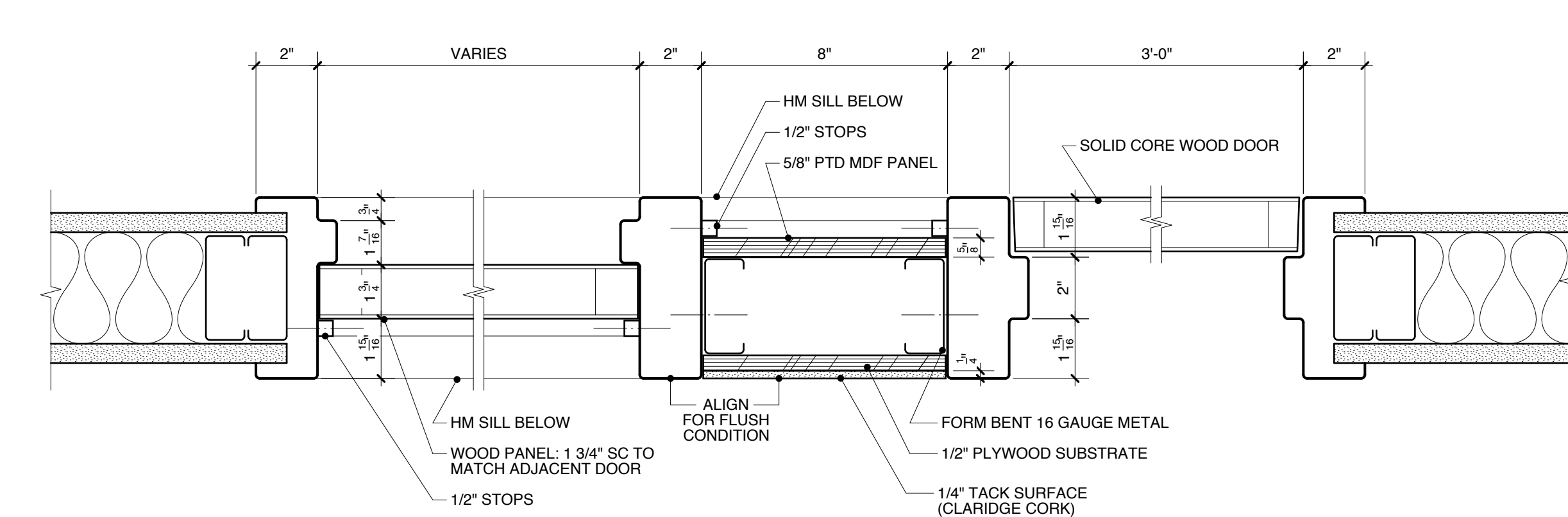
1 DOOR TYPES
SCALE: 1/4" = 1'-0"



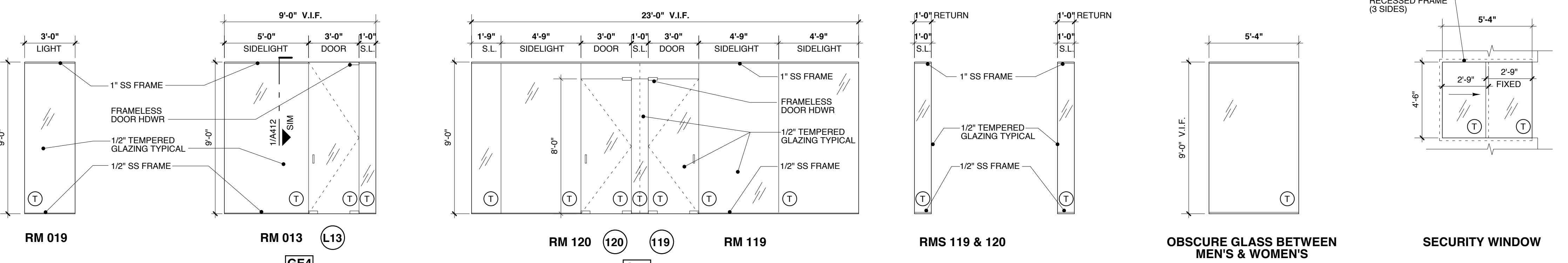
2 FRAME TYPES
SCALE: 1/2" = 1'-0"



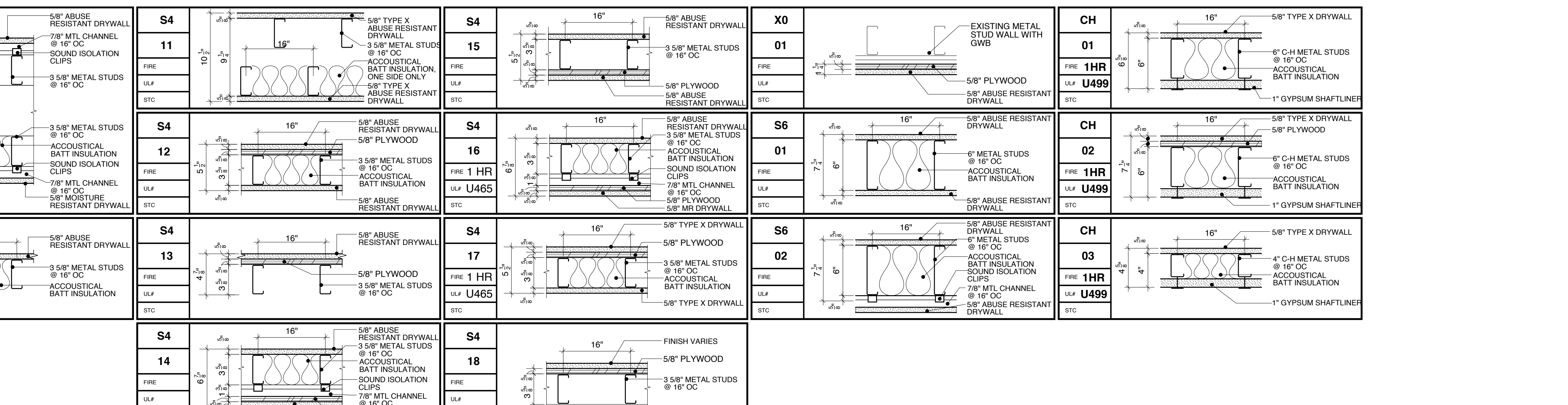
5A DOOR ASSEMBLY DETAIL
SCALE: 3" = 1'-0"



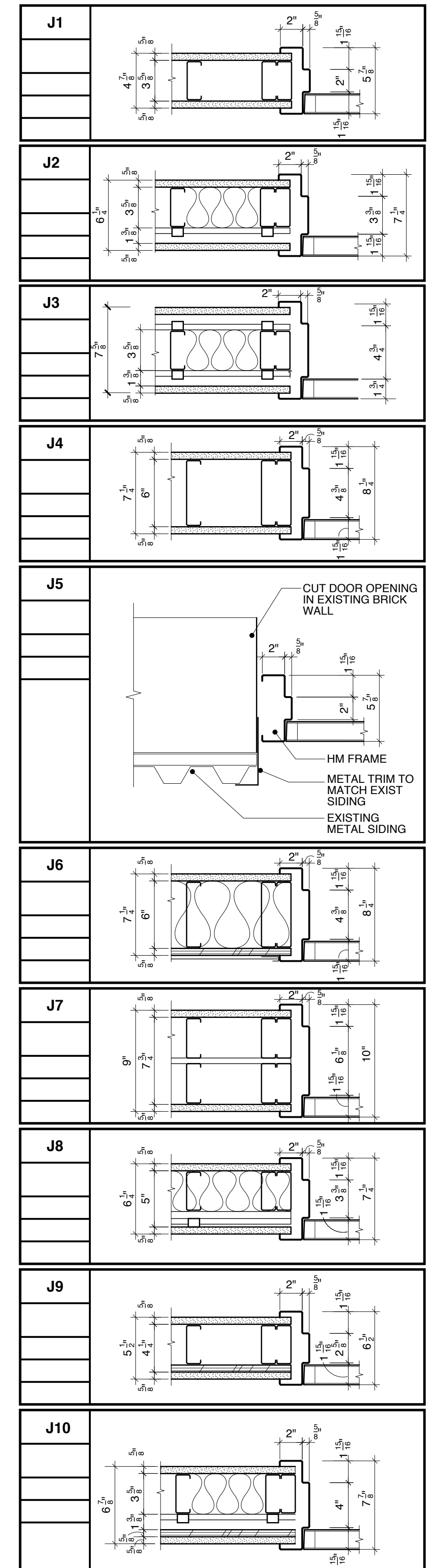
5B DOOR ASSEMBLY DETAIL
SCALE: 3" = 1'-0"



3 INTERIOR FRAMELESS GLASS
SCALE: 1/4" = 1'-0"



4 WALL TYPES
SCALE: 3" = 1'-0"



6 JAMB TYPES
SCALE: 1 1/2" = 1'-0"

PROJECT
Portland Public Library
Addition / Renovation
5 MONUMENT SQUARE
PORTLAND, ME

TITLE
DOOR SCHEDULE, DETAILS & WALL TYPES

STATUS:
ISSUED FOR BIDDING
CONSTRUCTION DOCUMENTS

DATE: 02.12.2009
SCALE:
PROJECT NO: 2008-0030
DRAWN BY: 2009 © Scott Simons Architects
DWG NO.: **A701**

Scott Simons Architects
75 York Street
Portland, ME 04101
Tel: 207.772.4656
Fax: 207.628.4656
www.scottsimonsarchitects.com

SCOTT R. SIMONS
NO. 2034
STATE OF MAINE
LICENSED ARCHITECT